

Product datasheet for RC222236

C8 (C8G) (NM_000606) Human Tagged ORF Clone

Product data:

Product Type: Expression Plasmids
Product Name: C8 (C8G) (NM_000606) Human Tagged ORF Clone
Tag: Myc-DDK
Symbol: C8
Synonyms: C8C
Mammalian Cell Selection: Neomycin
Vector: pCMV6-Entry (PS100001)
E. coli Selection: Kanamycin (25 ug/mL)
ORF Nucleotide Sequence: >RC222236 ORF sequence
 Red=Cloning site Blue=ORF Green=Tags(s)

TTTTGTAATACGACTCACTATAGGGCGGCCGGAATTCGTCGACTGGATCCGGTACCGAGGAGATCTGCC
 GCCCGGATCGCC

ATGCTGCCCCCTGGGACTGCGACCCTTTGACTCTGCTCCTGGCAGCTGGCTCGCTGGGCCAGAAGCCTC
 AGAGGCCACGCCGCCGCATCCCCATCAGCACCATCCAGCCCAAGGCCAATTTTGATGCGCAGCAGTT
 TGCAGGGACCTGGCTCCTTGTGGCTGTGGGCTCCGCTTCCGTTTCTGCAGGAGCAGGGCCACCGGCC
 GAGGCCACCACACTGCATGTGGTCCCCAGGGCACAGCCATGGCTGTGAGTACCTCCGAAAGCTGGATG
 GGATCTGCTGGCAGGTGCCAGCTCTATGGAGACACAGGGTCTCGGCCGCTTCTGCTCAAGCCCG
 AGGCGCCCGAGGGGCTGTGCACGTGGTTGTCGCTGAGACCGACTACCAGAGTTTCGCTGTCTGTACCTG
 GAGCGGGCGGGCAGCTGTGAGTGAAGCTCTACGCCCGCTCGCTCCCTGTGAGCGACTCGGTCTGAGTG
 GGTTTGAGCAGCGGGTCCAGGAGGCCACCTGACTGAGGACCAGATCTTCTACTTCCCAAGTACGGCTT
 CTGCGAGGCTGCAGACCAGTTCCACGTCTGGACGAAGTGAGGAGG

ACGCGTACGCGGCCGCTCGAGCAGAACTCATCTCAGAAGAGGATCTGGCAGCAATGATATCCTGGATT
 ACAAGGATGACGACGATAAGGTTTAA

Protein Sequence: >RC222236 protein sequence
 Red=Cloning site Green=Tags(s)

MLPPGTATLLTLLAAGSLGQKQRRRPPASPISTIQPKANFDAQQFAGTWLLVAVGSACRFLQEQQHRA
 EATTLHVAPQGTAMAVSTFRKLDGICWQVRQLYGDVGVLGRFLLQARGARGAVHVVAETDYQSFVLYL
 ERAGQLSVKLYARSLPVSDSVLSGFEQVRVQEAHLTEDQIFYPKYGFCEAADQFHVLDVRR

TRTRPLEQKLISEEDLAANDILDYKDDDDKV



[View online »](#)

Chromatograms: https://cdn.origene.com/chromatograms/mk6706_h09.zip

Restriction Sites: SgfI-MluI

Cloning Scheme:



ACCN: NM_000606

ORF Size: 606 bp

OTI Disclaimer: The molecular sequence of this clone aligns with the gene accession number as a point of reference only. However, individual transcript sequences of the same gene can differ through naturally occurring variations (e.g. polymorphisms), each with its own valid existence. This clone is substantially in agreement with the reference, but a complete review of all prevailing variants is recommended prior to use. [More info](#)

OTI Annotation: This clone was engineered to express the complete ORF with an expression tag. Expression varies depending on the nature of the gene.

Components: The ORF clone is ion-exchange column purified and shipped in a 2D barcoded Matrix tube containing 10ug of transfection-ready, dried plasmid DNA (reconstitute with 100 ul of water).

Reconstitution Method:

1. Centrifuge at 5,000xg for 5min.
2. Carefully open the tube and add 100ul of sterile water to dissolve the DNA.
3. Close the tube and incubate for 10 minutes at room temperature.
4. Briefly vortex the tube and then do a quick spin (less than 5000xg) to concentrate the liquid at the bottom.
5. Store the suspended plasmid at -20°C. The DNA is stable for at least one year from date of shipping when stored at -20°C.

RefSeq: [NM_000606.3](#)

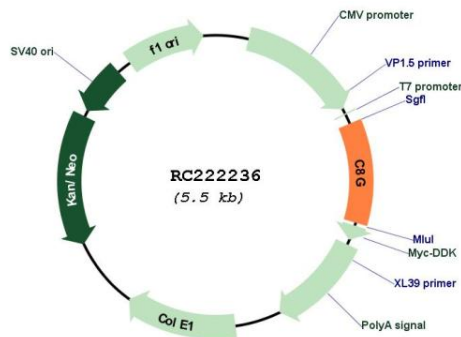
RefSeq Size: 888 bp

RefSeq ORF: 609 bp

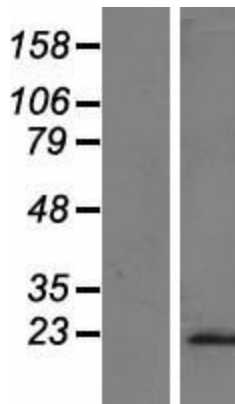
Locus ID: 733

UniProt ID: [P07360](#)
Cytogenetics: 9q34.3
Protein Families: Druggable Genome, Secreted Protein
Protein Pathways: Complement and coagulation cascades, Prion diseases, Systemic lupus erythematosus
MW: 22.2 kDa
Gene Summary: The protein encoded by this gene belongs to the lipocalin family. It is one of the three subunits that constitutes complement component 8 (C8), which is composed of a disulfide-linked C8 alpha-gamma heterodimer and a non-covalently associated C8 beta chain. C8 participates in the formation of the membrane attack complex (MAC) on bacterial cell membranes. While subunits alpha and beta play a role in complement-mediated bacterial killing, the gamma subunit is not required for the bactericidal activity. [provided by RefSeq, Jul 2011]

Product images:



Circular map for RC222236



Western blot validation of overexpression lysate (Cat# [LY424611]) using anti-DDK antibody (Cat# [TA50011-100]). Left: Cell lysates from untransfected HEK293T cells; Right: Cell lysates from HEK293T cells transfected with RC222236 using transfection reagent MegaTran 2.0 (Cat# [TT210002]).