

## Product datasheet for RC222235

### THOC2 (NM\_001081550) Human Tagged ORF Clone

#### Product data:

Product Type:	Expression Plasmids
Product Name:	THOC2 (NM_001081550) Human Tagged ORF Clone
Tag:	Myc-DDK
Symbol:	THOC2
Synonyms:	CXorf3; dj506G2.1; hTREX120; MRX12; MRX35; THO2
Mammalian Cell Selection:	Neomycin
Vector:	pCMV6-Entry (PS100001)
E. coli Selection:	Kanamycin (25 ug/mL)
ORF Nucleotide Sequence:	>RC222235 representing NM_001081550 Red=Cloning site Blue=ORF Green=Tags(s)

TTTTGTAATACGACTCACTATAGGGCGGCCGGAATTCGTCGACTGGATCCGGTACCGAGGAGATCTGCC  
GCCCGGATCGCC

ATGGCGGCCGCGGCTGTGGTGGTCCCGCAGAGTGGATAAAGAAGTGGGAGAAATCAGGGAGAGGCGAAT  
TTTTGCATTTATGTCGGATCCTCAGTGAATAAAAGCCATGATAGTTCAACATACAGAGATTTCCAGCA  
AGCTCTCTATGAGTTGTCATATCATGTAATTAAGGAAATCTAAAGCATGAACAGGCATCTAATGTTCTT  
AGTGACATTAGTGAATTCGTGAGGATATGCCCTCCATTCTTGCTGATGTATTCTGCATATTAGACATTG  
AGACAAATTTAGTGAAGAAAAAGCAAGAGAGACTATTTTACACAGTTGGTATTAGCATGTTTGTATTT  
AGTTTCAGACACAGTTCTAAAGGAACGCCTGGATCCAGAAACACTGGAATCATTAGGGCTTATCAACAA  
TCACAGCAATTCATCAAAAGTCAGTTAAAATCAAGACAAAACCTTTTTATAAGCAGCAAAAATTCAT  
TGTTAAGAGAAGAGAATGAAGGTTATGCCAAGCTGATTGCTGAATTGGGCAAGATTTATCTGGAAGTAT  
TACTAGTGATTTAATCTTAGAAAATATCAAATCTTTAATAGGATGCTTTAATCTGGATCCCAATAGAGTT  
TTGGATGTCATTTTAGAAGTGTGTAATGCAGGCCAGAACACGATGACTTCTTTATCTTTGTTAGAAT  
CTTACATGAGTATGTGTGAACCGCAAACACTGTGCATATTCTGGGTTCAAATTCAGTTTTACCAGGA  
ACCAATGGCGAGACACCATCATCTTTATACAGAGTTGCAGCAGTACTTCAATTTAATCTTATTGAT  
TTAGATGATCTTTATGTACATCTTCCGGCTGATAATTGCATTATGGATGAACACAAACGAGAAATTTG  
CGAAGCTAAGCAAATTTAGAAAAGCTTACGATGGTTGTGTTGTTCTTCTGAAAAAATGGATGAGCGAGA  
GAAAGAAAAGGAAAAAGAGAGGAGAAAGTAGAGAAACCCTGATAACCAAAAACCTGGCTTGTGGAA  
GCCTTATTAAGATTGGTATTGGCAACATGCACAGAACATTATGGATCAGATGCCTCCATACTATGCAG  
CTTCACACAAGCTAATAGCCCTTGCTATTTGCAAGCTCATTATATAACTATTGAGCCTCTCTACCGAAG  
AGTTGGAGTTCTAAAGTGCTAAAGGCTCACCTGTTAATGCTTTGCAAAAACAAGAGACCAAAAACA  
GCTGAGAGCTTTGAAGATTTGAGGAGAGACGTGTTCAATATGTTCTGTTACCTTGGTCTCACCTTTCTC  
ACGATCCCATTTATTTGCAAAAGTGGTGGCATAGGCAAGTCATTTATGAAGGAGTTTCAGTCTGATGG  
AAGCAAAACAAGAGATAAAGAAAAACGGAAGTTATCCTTAGCTGTTTGCTTAGCATTACTGACCAGGTA



[View online »](#)

CTACTTCCATCTCTTTCTTTGATGGACTGCAATGCTTGTATGTCTGAGGAACTATGGGGAATGTTTAAAA  
CATTTCCATATCAGCATAGATATCGTCTGTATGGCCAGTGAAGAATGAACTTATAACAGTCACCCACT  
TTTAGTAAAAGTTAAAGCTCAAACAATAGACAGAGCCAAATATATCATGAAGCGCCTAACCAAGGAAAA  
GTGAAGCCTTCTGGAAGACAAAATGGGAAGTTGAGCCACAGCAATCCAACCATTTTGTGTTGATTATCT  
TGTCACAAATACAGAAGTATGATAACTTAATAACACCTGTAGTAGATTCAATTGAAATACCTCACTTCACT  
GAATTATGATGTCTTGGCCTATTGTATCATTGAAGCTTTAGCTAATCCAGAAAAGGAAAGAATGAAACAT  
GATGACACAACCATCTCAAGCTGGCTTCAGAGTCTGGCTAGTTTCTGTGGTGCAGTTTTTTCGTAATATC  
CAATTGATCTTGGCTGCTTCTTCAGTATGTTGCCAATCAGCTAAAGCGGGCAAAAAGTTTTGACCTGCT  
TATATTGAAAGAAGTGGTACAAAAAATGGCAGGAATAGAAATTACAGAGGAAATGACAATGGAGCAACTA  
GAGGCTATGACTGGTGGAGAGCAGCTAAAAGCTGAGGGTGGTTATTTTGGTCAGATCAGAAAACACTAAAA  
AATCCTCTCAGAGATTAAAGGATGCTCTATTGGACCATGATCTTGCCTTCTCTCTGTCTGCTTATGGC  
TCAGCAGAGAAAATGGGGTAACTTTTCAGGAAGTGGAGAGAAACATTTGAAACTTGTGGGAAAGCTCTAT  
GACCAGTGTATGATACCTGGTGCAGTTTGGTGGTTTTTAGCATCTAATCTGAGCACAGAAGATTATA  
TAAAGCGAGTGCCTTCAATTGATGTACTCTGTAATGAATTCATACACCCCATGATGCAGCATTTTTCT  
GTCTAGGCCAATGTATGCCCATCATATTCGTCAAAGTATGATGAACTTAAAAAATCAGAAAAGGGAAGT  
AAACAGCAACATAAAGTTCATAAGTACATTACATCATGTGAGATGGTGTGGCGCCTGTCCATGAAGCAG  
TGGTCTCCTTACATGTTTCCAAAGTCTGGGATGACATCAGCCCTCAATTCTATGCTACATTCTGGTCATT  
GACAATGTATGACCTTGCAAGTCCACACACCAGCTATGAACGAGAAGTCAATAAACTTAAAGTCCAGATG  
AAAGCAATTGATGACAATCAGGAAATGCCCCCAATAAAAAGAAAAAGAGAAGGAGCGCTGACTGCC  
TTCAGGACAAGCTTCTTGAAGAAGAAAAGAAACAGATGGAACATGTACAGAGAGTTTACAGAGATTGAA  
ACTGGAAGGACAAGCTTCTTGAAGAAGAAAAGAAACAGATGGAACATGTACAGAGAGTTTACAGAGATTGAA  
TGTATATTTCTCGATGATTTTTTCAGCAATTGATGCTGTTACTGTGCTCGTTTTGTTGAATTGGTAC  
ATCAACAGAAAACCTCAAATTTTTCCACACTTTTCTGATGATCGAGTTTTCTGACATAAATTTAC  
AGTTGCAAGCTGTACTGAAAATGAAGCCAGTACGATACGGAAGGTTTTCTTGTGCATGTTAGAGACTGTG  
ACCAGGTGGCATAGTATAGAGCCACATATGAAAAGGAATGTGGAACACTATCCAGGATTCCTTACCATAT  
TACGGGCAACTGGATTTGATGGTGGAAAATAGGCTGATCAATTAGACTATGAAAATTTTCGACATGTTGT  
ACATAAATGGCATTACAACTAACCAGGCATCGGTACATTGCCTTGAACAGGCGAATATACTCACATC  
AGGAATATCTTGATTGTGCTAACAAAAAATCTTCTTGGTACCCAAAAGTTTTGAATCTGGGTCAAGCTT  
TGGAAAGAAGAGTACACAAAATCTGCCAAGAAGAAAAGAGAAGAGGCCAGATCTATATGCATTGGCTAT  
GGGCTACTCTGGCAGTTGAAAAGTAGAAAGTCATACATGATACCTGAAAATGAGTTTCATCACAAAGAC  
CCCCCTCCGAGGAATGCAGTTGCCAGTGTGCAAAATGGGCCTGGTGGTGGCCTTCTTCATCATCAATAG  
GAAGTGCATCTAAATCGGATGAAAGCAGTACTGAGGAGACTGATAAATCAAGGGAGAGATCTCAGTGTGG  
TGTGAAAGCTGTTAATAAAGCTTCTAGTACCACACCTAAAGGGAATTCAGCAATGGAAAATAGTGGCTCT  
AACAGCAACAAAGCTGTTAAAGAAAATGACAAAAGAAAAGGGAAGAGAAGAAAAGAGAAAAAGAAA  
AGACTCCAGCTACTACTCCAGAGGCCAGGGTACTTGGTAAAGATGGTAAAGAAAACCAAGGAAGAGCG  
GCCAAATAAGATGAAAAGCAAGAGAGACCAAGGAAAGAACGCCGAAGTCTGACAAAGAGAAAAGAAAA  
TTCAAGAAGGAAGAAAAGCTAAAGATGAGAAATTTAAGACCACTGTCCCAACGCAGAATCAAAATCAA  
CTCAAGAAAGGGAAGAGAGAAGGAGCCATCCAGAGAAAGAGATATAGCAAAGGAAATGAAATCAAAGGA  
AAATGTTAAAGGAGGAGAAAAAACACCAAGTTTCTGGGTCCTTGAATCACCTGTTCCAGATCAGATATT  
CCAGAGCCTGAAAGGGAACAAAAACGCCGCAAAATTTGATACTCACCTTCTCCATCACATTCTCCACAG  
TAAAGGACAGTCTCATCGAACTCAAGGAATCTTCAGAAAAGCTCTACATTAATCATACTCTCCACCACT  
GTCCAAGAGTAAGGAGAGAGAAAATGGACAAGAAAGATTTGGACAAGTCAAGGGAAGATCCAGAGAAAGA  
GAGAAAAAAGATGAAAAGGACAGGAAAGAGCGGAAAAGGGATCACTCAAACAACGACCGTGAAGTCCAC  
CGGACTTAACCAAGAGACGTAAGAGGAGAAATGGAACAATGGGGTTTTCAAACATAAAAGTGAAGTCC  
TTGTGAATCTCCTTATCCAAATGAGAAAGACAAGGAAAAAATAAGTCAAATCTTCAGGCAAAGAAAA  
GGCAGTGATTCATTTAAATCTGAGAAGATGGATAAAATCTCTCCGGTGGCAAAAAGGAGTCCAGGCATG  
ATAAAGAAAAGATAGAAAAGAAAGAAAACGGGACAGTTCAGGAGAAAGGAAGAGAAGAAACATCATAA  
GTCTCGGACAAGCACAGA

ACGCGTACGCGGCCGCTCGAGCAGAACTCATCTCAGAAGAGGATCTGGCAGCAAATGATATCCTGGATT  
ACAAGGATGACGACGATAAGGTTTAA

**Protein Sequence:** >RC222235 representing NM\_001081550  
 Red=Cloning site Green=Tags(s)

MAAAVVVPAEWIKNWEKSGRGEFLHLCRILSENKSHDSSTYRDFQQALYELSYHVIKGNLKHQASNLV  
 SDISEFREDMPSILADVFCILDINETNCLLEEKSKRDYFTQLVLAACYLVSVDVTKERLDPETLESGLIKQ  
 SQQFNQKSVKIKTKLFYKQKFNLLREENEGYAKLIAELGQDLGSGITSDILENIKSLIGCFNLDPNRV  
 LDVILEVFECPREHDDFFISLLESYMSMCEPQTLCHILGFKFQEPNGETPSSLYRVAVLLQFNLI  
 LDDLIVHLLPADNCIMDEHKREIAEAKQIVRKLTMVVLSSSEKMDEREKEKEKEVEKPPDNQKGLLE  
 ALLKIGDWQHAQNIMDQMPYYAASHKLIAlAICKLIHIIEPLVRRVGVKPKGAKGSPVNALQNKRAPKQ  
 AESFEDLRRDVFNMFCYLGPHLSHDPILFAKVVRIGKSFMEFQSDGSKQEDKEKTEVILSCLLSITDQV  
 LLPSLSLMDCNACMSEELWGMFKTFPYQHRYRLYGQWKNETYNSHPLLKVKVAQTIDRAKYMKRLTKEN  
 VKPSGRQIGKLSHNPITLFDYILSQIQKYDNLITPVVDSLKYL TSLNYDVLAYCIEALANPEKERMKH  
 DDTTISSWLQSLASFCAVFRKYPIDLAGLLQYVANQLKAGKSFDLLILKEVVQKMGAGIEITEEMTMEQL  
 EAMTGGEQKAEAGGYFGQIRNTKKSSQRLKDALDHDLDLPLCLLMAQQRNGVIFQEGGKHLKLVGKLY  
 DQCHDTLVQGGFLASNLDSTEDIKRVPSIDVLCNEFHTPHDAFFLSRPMYAHHSKYDELKKSEKGS  
 KQKHVKHYITSCVMAPVHEAVVSLHVSQVWDDISPQFYATFWSLTMYDLAVPHTSYEREVNKLKVQM  
 KAIDDNQEMPPNKKKEKERCTALQDKLLEEEKQMEHVQRVLRQLEKDNWLLAKSTKNETITKFLQL  
 CIFPRCIFSAIDAVYCARFVELVHQKTPNFSTLLCYDRVFSDIITYVASCTENEASRYGRFLCCMLETV  
 TRWHSDRATYEKECGNYPGLTILRATGFDGGNKADQLDYNFRHVHWHYKLTASVHCLETGEYTHI  
 RNILIVLTKILPWPKVLNLGQALERVHKICQEEKEKRPDLALAMGYSGQLKSRKSYMIPENEFHKKD  
 PPPRNAVASVQNGPGGGPSSSSIGSASKSDESSTTEEDKSRERSQCGVAVNKASSTTPKGNSSNGSGS  
 NSNKAVKENDKEKGEKEKEKKEKTPATTPPEARVLGKDGKEKPKKEERPKNKDEKARETKERTPKSDKEKEK  
 FKKEEKAKDEKFKTTVPNAESKSTQEREREKPSRERDIAKEMKSKENVKGGEKTPVSGSLKSPVPRSDI  
 PEPEREQKRRKIDTHPSPSHSSTVKDSLIELKSSAKLYINHTPPPLSKSKEREMDKKDLKSRERSRER  
 EKKDEKDRKERKRDSNNDREVPPDLTKRRKEENGTMGVSKHKSESPCESYPNEKDKENKSKSSGKEK  
 GSDSFKSEKMDKISSGGKESRHDKEKIEKKEKRDSGGKEEKKHHKSSDKHR

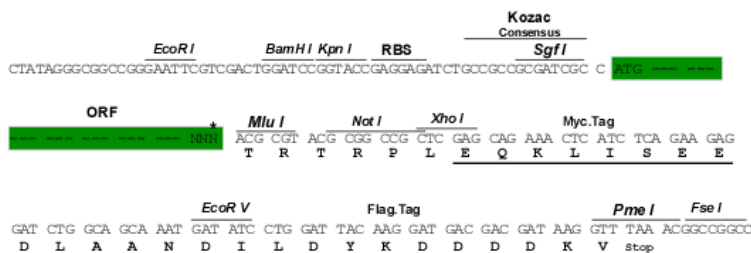
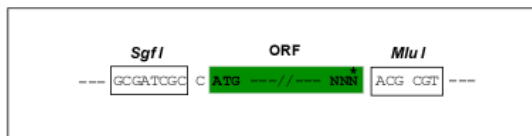
TRTRPLEQKLISEEDLAANDILDYKDDDDKV

**Chromatograms:** [https://cdn.origene.com/chromatograms/mk8040\\_h09.zip](https://cdn.origene.com/chromatograms/mk8040_h09.zip)

**Restriction Sites:** SgfI-MluI

**Cloning Scheme:**

Cloning sites used for ORF Shutting:

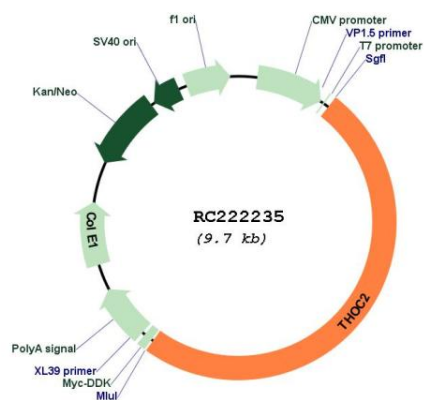


\* The last codon before the Stop codon of the ORF

**ACCN:** NM\_001081550

<b>ORF Size:</b>	4779 bp
<b>OTI Disclaimer:</b>	<p>Due to the inherent nature of this plasmid, standard methods to replicate additional amounts of DNA in E. coli are highly likely to result in mutations and/or rearrangements. Therefore, OriGene does not guarantee the capability to replicate this plasmid DNA. Additional amounts of DNA can be purchased from OriGene with batch-specific, full-sequence verification at a reduced cost. Please contact our customer care team at <a href="mailto:custsupport@origene.com">custsupport@origene.com</a> or by calling 301.340.3188 option 3 for pricing and delivery.</p> <p>The molecular sequence of this clone aligns with the gene accession number as a point of reference only. However, individual transcript sequences of the same gene can differ through naturally occurring variations (e.g. polymorphisms), each with its own valid existence. This clone is substantially in agreement with the reference, but a complete review of all prevailing variants is recommended prior to use. <a href="#">More info</a></p>
<b>OTI Annotation:</b>	This clone was engineered to express the complete ORF with an expression tag. Expression varies depending on the nature of the gene.
<b>Components:</b>	The ORF clone is ion-exchange column purified and shipped in a 2D barcoded Matrix tube containing 10ug of transfection-ready, dried plasmid DNA (reconstitute with 100 ul of water).
<b>Reconstitution Method:</b>	<ol style="list-style-type: none"> <li>1. Centrifuge at 5,000xg for 5min.</li> <li>2. Carefully open the tube and add 100ul of sterile water to dissolve the DNA.</li> <li>3. Close the tube and incubate for 10 minutes at room temperature.</li> <li>4. Briefly vortex the tube and then do a quick spin (less than 5000xg) to concentrate the liquid at the bottom.</li> <li>5. Store the suspended plasmid at -20°C. The DNA is stable for at least one year from date of shipping when stored at -20°C.</li> </ol>
<b>RefSeq:</b>	<a href="#">NM_001081550.2</a>
<b>RefSeq Size:</b>	5625 bp
<b>RefSeq ORF:</b>	4782 bp
<b>Locus ID:</b>	57187
<b>UniProt ID:</b>	<a href="#">Q8NI27</a>
<b>Cytogenetics:</b>	Xq25
<b>Protein Pathways:</b>	Spliceosome
<b>MW:</b>	182.6 kDa
<b>Gene Summary:</b>	The TREX multiprotein complex binds specifically to spliced mRNAs to facilitate mRNA export. The protein encoded by this gene is a member of the THO complex, a subset of the TREX complex. The encoded protein interacts with the THOC1 protein.[provided by RefSeq, Jun 2010]

Product images:



Circular map for RC222235