

## Product datasheet for **RC222230**

### **CSNK1G3 (NM\_001044723) Human Tagged ORF Clone**

#### **Product data:**

Product Type:	Expression Plasmids
Product Name:	CSNK1G3 (NM_001044723) Human Tagged ORF Clone
Tag:	Myc-DDK
Symbol:	CSNK1G3
Synonyms:	CKI-gamma 3; CSNK1G3L
Mammalian Cell Selection:	Neomycin
Vector:	pCMV6-Entry (PS100001)
E. coli Selection:	Kanamycin (25 ug/mL)



[View online »](#)

**ORF Nucleotide Sequence:**

>RC222230 representing NM\_001044723  
 Red=Cloning site Blue=ORF Green=Tags(s)

TTTTGTAATACGACTCACTATAGGGCGGCCGGAATTCGTCGACTGGATCCGGTACCGAGGAGATCTGCC  
 GCC**CGCATCGCC**

ATGAAAAATAAAAAGAAAGACAAGGACAAATCAGATGATAGAATGGCAGCAGCTAGTGGTCGATCGGGAC  
 ACAACACTCGAGGAAGTGGTCTTCATCGTCTGGAGTTTTAATGGTTGGACCTAAGTTTAGAGTTGGAAA  
 AAAAAATTGGATGTGGCAATTTTGGAGAATTACGATTAGGGAAAAATTTATACACAATGAATATGTGGCA  
 ATTAAGTTGGAGCCCATGAAATCAAGAGCACCACAGCTACATTTGGAATACAGATTCTATAAGCAGTTAG  
 GATCTGGAGATGGTATACCTCAAGTTTACTATTTTCGGCCCTTGTGGTAAATACAATGCTATGGTCTGGA  
 ACTGCTGGGACCTAGTTTGAAGACTTGTGGACTTGTGTGACAGAACATTTTCTCTAAACAGTTCTC  
 ATGATAGCTATACAACTGATTTCTCGCATGGAATATGTCCATTCAAAGAAGTTGATATACAGAGATGTA  
 AACCTGAGAACTCTTAATAGGACGACCAGGAAACAAAACCCAGCAAGTTATTCACATTATAGATTTTGG  
 TTTGGCAAAGGAATATATTGATCCGGAGACAAAGAAACACATACCATACAGAGAACAAGAGCCTTACA  
 GGAACAGCTAGATATATGAGCATAAACACACATTTAGGAAAAGAACAAGTAGAAGAGACGATTTAGAAG  
 CTTTAGGTCATATGTTTATGATTTTCTGAGAGGCAGTCTTCTTGGCAAGGCTTAAAGGCTGACACATT  
 AAAGGAGAGGTATCAGAAAATTGGAGATACAAAACGGGCTACACCAATAGAAGTGTATGTGAAAATTTT  
 CCAGAAATGGCAACATATCTTCGTTATGTAAGAAGGCTAGATTTTTTTGAAAACCGACTATGACTACT  
 TAAGAAAGCTTTTTACTGACTTGTGGTTCGAAAAGGATATATGTTTGATTATGAATATGACTGGATTGG  
 TAAACAGTTGCCTACTCCAGTGGTGCAGTTTCAGCAAGATCCTGCTCTGTATCAACAGAGAAGCAGAT  
 CAACACAGAGATAAGATGCAACAATCCAAAACAGTCCGAGACACAGGCAGCTTGGGACTCCCAGC  
 AGGAAAATCCCCACCATTGAGAGCTCACCTTGCAGCAGACAGACATGGTGGCTCGGTACAGGTTGTAAG  
 TTCTACAAAATGGAGAGTTAAACACAGATGACCCACCCGAGGACGTTCAAATGCACCCATCACAGCCCT  
 ACTGAAGTAGAAGTGATGGATGAAACCAACTGCCAGAAAGTGTGAACATGTGGTCTGCTGTTTTTTCA  
 AACGAAGGAAAAGGAAAACCATACAGCGCCACAAA

**ACGCGT**ACGCGGCCGCTCGAGCAGAAACTCATCTCAGAAGAGGATCTGGCAGCAAATGATATCCTGGATT  
 ACAAGGATGACGACGATAAGGTTTAA

**Protein Sequence:**

>RC222230 representing NM\_001044723  
 Red=Cloning site Green=Tags(s)

MENKKKDKDKSDDRMARPSGRSGHNTRGTGSSSSGVLVMPNFRVGGKIGCGNFGELELRGKPLYTNEYVA  
 IKLEPMKSRAPQLHLEYRFYKQLGSGDGIPOVYFPGCGKYNAMVLELLGPSLEDLFDLDRTFSLKTVL  
 MIAIQLISRMAYVHKNLIYRDVKNPENFLIGRPGNKTQQVIHIIDFGLAKEYIDPETKKHIPYREHSLT  
 GTARYMSINTHLGKEQSRDDLEALGHMFMYFLRGLPWQGLKADTLKERYQKIGDTKRATPIEVLNENF  
 PEMATYLRVRRDLDFEKPDPDYLRKLFIDLFRKGYMFDYEDWIGQLPTPVGAVQQDPALSSNREAH  
 QHRDKMQQSKNQSADHRAAWDSQQANPHHLRAHLAADRHHGGSVQVVSSTNGELNTDDPTAGRSNAPITAP  
 TEVEVMDETNCQKVLNMWCCCFKRRRKRKTIQRHK

**TR**TRPLEQKLISEEDLAANDILDYKDDDDKV

**Restriction Sites:**

Sgfl-Mlul

**Cloning Scheme:**


**ACCN:** NM\_001044723

**ORF Size:** 1365 bp

**OTI Disclaimer:** The molecular sequence of this clone aligns with the gene accession number as a point of reference only. However, individual transcript sequences of the same gene can differ through naturally occurring variations (e.g. polymorphisms), each with its own valid existence. This clone is substantially in agreement with the reference, but a complete review of all prevailing variants is recommended prior to use. [More info](#)

**OTI Annotation:** This clone was engineered to express the complete ORF with an expression tag. Expression varies depending on the nature of the gene.

**Components:** The ORF clone is ion-exchange column purified and shipped in a 2D barcoded Matrix tube containing 10ug of transfection-ready, dried plasmid DNA (reconstitute with 100 ul of water).

- Reconstitution Method:**
1. Centrifuge at 5,000xg for 5min.
  2. Carefully open the tube and add 100ul of sterile water to dissolve the DNA.
  3. Close the tube and incubate for 10 minutes at room temperature.
  4. Briefly vortex the tube and then do a quick spin (less than 5000xg) to concentrate the liquid at the bottom.
  5. Store the suspended plasmid at -20°C. The DNA is stable for at least one year from date of shipping when stored at -20°C.

**RefSeq:** [NM\\_001044723.2](#), [NP\\_001038188.1](#)

**RefSeq Size:** 4462 bp

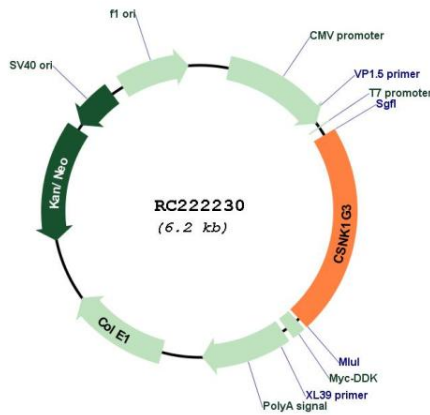
**RefSeq ORF:** 1368 bp

**Locus ID:** 1456

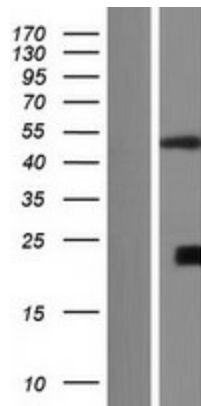
**UniProt ID:** [Q9Y6M4](#)

**Cytogenetics:** 5q23.2  
**Protein Families:** Druggable Genome, Protein Kinase  
**Protein Pathways:** Hedgehog signaling pathway  
**MW:** 52.2 kDa  
**Gene Summary:** This gene encodes a member of a family of serine/threonine protein kinases that phosphorylate caseins and other acidic proteins. A related protein in the African clawed frog participates in the transmission of Wnt/beta-catenin signaling. Alternatively spliced transcript variants encoding multiple isoforms have been observed for this gene. [provided by RefSeq, Jul 2012]

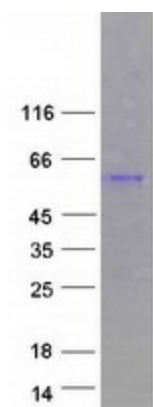
**Product images:**



Circular map for RC222230



Western blot validation of overexpression lysate (Cat# [LY420832]) using anti-DDK antibody (Cat# [TA50011-100]). Left: Cell lysates from untransfected HEK293T cells; Right: Cell lysates from HEK293T cells transfected with RC222230 using transfection reagent MegaTran 2.0 (Cat# [TT210002]).



Coomassie blue staining of purified CSNK1G3 protein (Cat# [TP322230]). The protein was produced from HEK293T cells transfected with CSNK1G3 cDNA clone (Cat# RC222230) using MegaTran 2.0 (Cat# [TT210002]).