

Product datasheet for **RC222228**

PCDH11X (NM_032968) Human Tagged ORF Clone

Product data:

Product Type:	Expression Plasmids
Product Name:	PCDH11X (NM_032968) Human Tagged ORF Clone
Tag:	Myc-DDK
Symbol:	PCDH11X
Synonyms:	PCDH-X; PCDH-Y; PCDH11; PCDH11Y; PCDH22; PCDHX; PPP1R119
Mammalian Cell Selection:	Neomycin
Vector:	pCMV6-Entry (PS100001)
E. coli Selection:	Kanamycin (25 ug/mL)
ORF Nucleotide Sequence:	>RC222228 representing NM_032968 Red=Cloning site Blue=ORF Green=Tags(s)

TTTTGTAATACGACTCACTATAGGGCGGCCGGAATTCGTCGACTGGATCCGGTACCGAGGAGATCTGCC
GCC**CGATCGCC**

ATGGACTTGTGTCCGGGACGTACATTTTCGCGGTCTGCTAGCATGCGTGGTGTCCACTCTGGCGCC
AGGAGAAAACTACACCATCCGAGAAGAAATGCCAGAAAACGTCCTGATAGGCGACTTGTGAAAGACCT
TAATTGTGCTGATTCCAAACAAGTCTTGACAACGCTATGCAGTTCAAGCTAGTGTACAAGACCGGA
GATGTGCCACTGATTGCAATTGAAGAGGATACTGGTGAGATCTTCACTACTGGCGCTCGCATTGATCGT
AGAAATTATGTGCTGGTATCCCAAGGGATGAGCATTGCTTTTATGAAGTGGAGGTTGCCATTTTCCCGGA
TGAAATATTTAGACTGGTTAAGATACGTTTTCTGATAGAAGATATAAATGATAATGCACCATTGTTCCCA
GCAACAGTTATCAACATATCAATTCCAGAGAACTCGGCTATAAACTCTAAATATACTCTCCAGCGGCTG
TTGATCCTGACGTAGGAATAAACGGAGTTCAAACTACGAACTAATTAAGAGTCAAAACATTTTGGCCT
CGATGTCATTGAAACACCAGAAGGAGACAAGATGCCACAACGATTTGTTCAAAGGAGTTAGATAGGGAA
GAGAAGGATACCTACGTGATGAAAGTAAAGTTGAAGATGGTGGCTTTCCTCAAAGATCCAGTACTGCTA
TTTTGCAAGTGAAGTACTGATACAAATGACAACCCAGTCTTTAAGGAGACAGAGATTGAAGTCAG
TATACCAGAAAAATGCTCCTGTAGGCACTTCAGTGACACAGCTCCATGCCACAGATGCTGACATAGGTGAA
AATGCCAAGATCCACTTCTTTTCAGCAATCTAGTCTCCAACATTGCCAGGAGATTATTTACCTCAATG
CCACTGGACTTATCACAATCAAAGAACCCTGGATAGGGAAGAAACACCAAAACCACAAGTTACTGGT
TTTGGCAAGTGAAGTGGATTGATGCCAGCAAGAGCAATGGTGGTAAATGTTACAGATGTCATGAT
AATGTCCCATCCATTGACATAAGATACATCGTCAATCCTGTCAATGACACAGTTGTTCTTTTCAGAAAATA
TTCCACTCAACACCAAAATGCTCTCATAACTGTGACGGATAAGGATGCGGACCAATAATGGCAGGGTGC
ATGCTTACAGATCATGAAATCCCTTTTCAGATTAAGGCCAGTATTCAGTAATCAGTTCTCTCTGGAGACT
GCAGCATATCTTGACTATGAGTCCAAAAAGAATATGCCATTAATTAAGTGGCTGCAGATGCTGGCAAC
CTCCTTTGAATCAGTCAGCAATGCTCTTCATCAAAGTAAAGATGAAATGACAATGCTCCAGTTTTCAC
CCAGTCTTTCGTAACGTTTCTATTCTGAGAATAACTCTCCTGGCATCCAGTTGACGAAAGTAAGTGCA



[View online »](#)

ATGGATGCAGACAGTGGGCCAATGCTAAGATCAATTACCTGCTAGGCCCTGATGCTCCACCTGAATTCA
GCCTGGATTGTCGTACAGGCATGCTGACTGTAGTGAAGAACTAGATAGAGAAAAAGAGGATAAATATTT
ATTCACAATTCTGGCAAAAGATAACGGGGTACCACCCCTAACCAGCAATGTCACAGTCTTTGTAAGCATT
ATTGATCAGAATGACAATAGCCCACTTTCACTCACAATGAATACAACCTCTATGTCCCAGAAAACCTTC
CAAGGCATGGTACAGTAGGACTAATCACTGTAAGTATGCTGATTATGGAGACAATCTGCAGTTACGCT
CTCCATTTTAGATGAGAATGATGACTTACCATTGATTCACAACTGGTGTATCCGACCAAAATATTTCA
TTTGATAGAGAAAAACAAGAATCTTACACTTTCTATGTAAGGCTGAGGATGGTGGTAGAGTATCACGTT
CTTCAAGTGCCAAAGTAACCATAAATGTGGTTGATGCAATGACAACAAACCAGTTTTCATTGTCCCTCC
TTCCAAGTGTCTTATGAATTGGTTCTACCGTCCACTAATCCAGGCACAGTGGTCTTTCAGGTAATTGCT
GTTGACAAATGACTGTCATGAATGCAGAGGTTTCGTTACAGCATTGTAGGAGGAAACACAAGAGATCTGT
TTGCAATCGACCAAGAAACAGGCAACATAACATTGATGGAGAAATGTGATGTTACAGACCTTGGTTTACA
CAGAGTGTGGTCAAAGCTAATGACTTAGGACAGCCTGATTCTCTTTCAGTGTGTAATTGTCAATCTG
TTCGTGAATGAGTCGGTGACCAATGCTACACTGATTAATGAACTGGTGCAGAAAAGCACTGAAGCACCAG
TGACCCCAAACTAGAGATAGCTGATGTATCCTACCAACTAGTACTATGTCAAGATCCTGGTTGCAGC
TGTTGCTGGCACCATAACTGTCGTTGTAGTTATTTTCATCACTGCTGTAGTAAGATGTGCCAGGCACCA
CACCTTAAGGCTGCTCAGAAAAACAAGCAGAATCTGAATGGGCTACCCCAACCCAGAAAAACAGGCAGA
TGATAATGATGAAGAAAAAGAAAAAGAAGAAGAAGCATTCCCCTAAGAATTGCTGCTTAATTTTGTAC
TATTGAAGAACTAAGGCAGATGATGTTGACAGTGTGAAACAGAGTCACACTAGACCTTCCCTATTGAT
CTAGAAGAGCAACAATGGGAAAGTACAATTGGGTAACACTACCTACTACTTTCAAGCCCGACAGCCCTG
ATTTGGCCCGACTACAATCTGCCTCTCCACAGCCTGCCTTCCAAATTCAGCCTGAAACTCCCCTGAA
TTCGAAGCACCACATCATCCAAGAACTGCCTCTCGATAACACCTTTGTGGCCTGTACTCTATCTCCAAG
TGTTCCCAAGCAGTTCAGATCCCTACAGCGTTTCTGACTGTGGCTATCCAGTGACGACCTTCGAGGTAC
CTGTGTCCGTACACACCAGCCCAATGAAGGAGGTTGTGCGATCTTGACCCCATGAAAGAGTCTAC
AACTATGGAGATCTGGATTCATCCCAACCACAGCGGAAATCTGAAGGGAAAGTGGCAGGAAAGTCCCAG
CGGCGTGTACATTTACCTGCCAGAAGGCTCTCAGGAAAGCAGCAGTGTGGTGGACTGGGAGACCATG
ATGCAGGCAGCCTTACCAGCACATCTCATGGCCTGCCCTTGGCTATCCTCAGGAGGAGTACTTTGATCG
TGCTACACCCAGCAATCGCACTGAAGGGGATGGCAACTCCGATCCTGAATCTACTTTTACACCTGGACTA
AAGAAAGCTGCAGAAATAACTGTTCAACCAACTGTGGAAGAGGCCTTGACAACCTGCACTCAAGAATGTC
TCATCTATGGCCATTCTGATGCCTGCTGGATGCCGGCATCTCTGGATCATTCCAGCTCTTCGCAAGCACA
GGCCTCTGCTCTATGCCACAGCCACCCTGTCACAGGCCTCTACTCAGCACCACAGCCACGAGTGACA
CAGACCATTGCTCTCTGCCACAGCCCTCCAGTGACACAGACCATCGCATTGTGCCACAGCCACCACCGA
TACAGGTGTCTGCTCTCCACCACAGTCCCTCTAGTGCAGGCTACTGCACTTACCACAGCCACCACATC
AGCACAGGCCTCAGCCCTCTGCTACAGCCCTCCTTTAGCACAGGCTGCTGCAATCAGCCACAGCTCTCT
CTGCCACAGGTTATTGCCCTCCATCGTAGTCAGGCCCAATCATCAGTCAGTTTGCAGCAAGGTTGGGTGC
AAGGTGCTGATGGGCTATGCTCTGTTGATCAGGGAGTGAAGGTAGTGAACATCTCAGTTTACACCAT
GTCTGAAAGACTTCATCCAGTGATGATTCAATTAAGTCAATTCCTTTGACAACCTTCACTCCACGCCAA
CAGGCCAGACCGTCCAGAGGTGATTCCTCCATTATGGAAGAACATCCCTG

ACGCGTACGCGGCCGCTCGAGCAGAACTCATCTCAGAAGAGGATCTGGCAGCAATGATATCCTGGATT
ACAAGGATGACGACGATAAGGTTTAA

Protein Sequence: >RC222228 representing NM_032968
 Red=Cloning site Green=Tags(s)

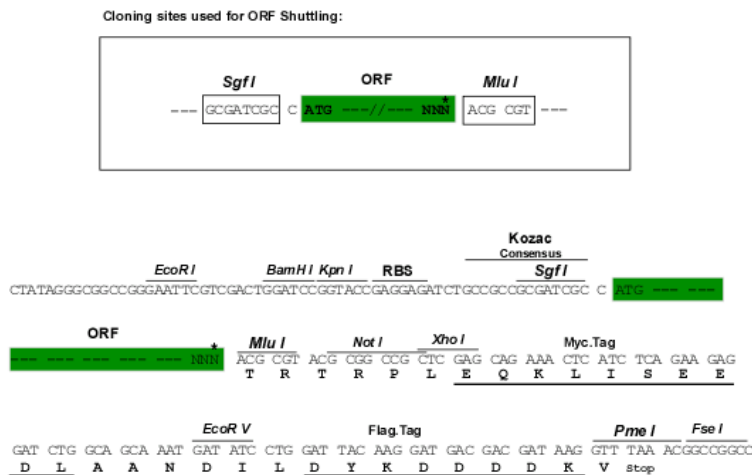
```
MDLLSGTYIFAVLLACVVFHSGAQEKNYTIREEMPENVLIGDLLKDLNLSLIPNKSLTTAMQFKLVYKTG
DVPLIRIEEDTGEIFTTGARIDREKLCAGIPRDEHCFYEVEVAILPDEIFRLVKIRFLIEDINDNAPLFP
ATVINISIPENSAINSKYTLPAAVDPDVINGVQNYELIKSQNIFGLDVIETPEGDKMPQLIVQKELDRE
EKDITYMKVKVEDGGFPQRSSTAILQVSVTDTNDNHPVFKETEIEVSIPENAPVGTSVTQLHATDADIGE
NAKIHFSFNLVSNIAARRLFHLNATTGLITIKEPLDREETPNHKLLVLASDGGLMPARAMVLVNVTDVND
NVPSIDIRYIVNPVNDTVVLSENIPLNTKIALITVTDKADHNGRVTCFTDHEIPFRLRPVFSNQFLLET
AAYLDYESTKEYAIKLLAADAGKPLNQSAMLFIKVKDENDNAPVFTQSFVTVSIPENNSPGIQLTKVSA
MDADSGPNAKINYLGLPDAPPEFSLDCRTGMLTVVKLDREKEDKYLFTILAKDNGVPLTSNVTVFVSI
IDQNDNSPVFTHNEYNFYVPENLPRHGTVGLITVTDPDYGDNSAVTLSILDENDDFTIDSQTGVIRPNIS
FDREKQESYTFYVKAEDGGRVSRSSAKVTINVVDVNDNKPVFI VPPSNCSYELVLPSTNPGTVVFQVIA
VDNDTGMNAEVRYSIVGGNTRDLFAIDQETGNITLMEKCDVTDLGLHRVLVKANDLGQPDLSFVSVIVNL
FVNESVTNATLINELVRKSTEAPVTPNTEIADVSSPTSDYVKILVAAVAGTITVVVVFITAVVRCRQAP
HLKAAQKNKQNSEWATPNPENRQIMMKKKKKKKHSPKNLLNFVTIEETKADDVSDGGRVTLDLPID
LEEQTMGKYNWVTTPTTFKPDSPDLARHYKSASPQAFQIQPETPLNSKHIIQELPLDNTFVACDSISK
CSSSSSDPYSVSDCGYPVTTFEVPSVHTRPPMKEVVRSCTPMKESTTMEIWIHPQPQRKSEGKVAGKSQ
RRVTFHFLPEGSQESSSDGGLGDHDAGSLTSTSHGLPLGYPQEEYFDRA TPSNRTEGDGNSDPESTFIPGL
KKAAEITVQPTVEEASDNCTQECLYGHSDACWMPASLDHSSSSQAQASALCHSPPLSQASTQHHSRPT
QTIALCHSPVPTQIALCHSPPIQVSALHHSPLVQATALHHSPPSAQASALCYSPLAQAASISHSSP
LPQVIALHRSQAQSSVSLQQGWVQGADGLCSVDQGVQGSATSQFYTM SERLHPSDDSIKVIPLTTFTRPQ
QARPSRGDSPIMEEHPL
```

TRTRPLEQKLISEEDLAANDILDYKDDDDKV

Chromatograms: https://cdn.origene.com/chromatograms/mk6713_g05.zip

Restriction Sites: SgfI-MluI

Cloning Scheme:



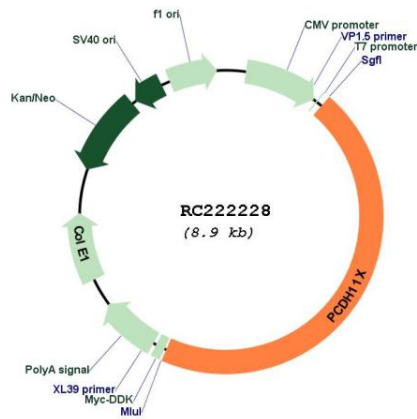
* The last codon before the Stop codon of the ORF

ACCN: NM_032968

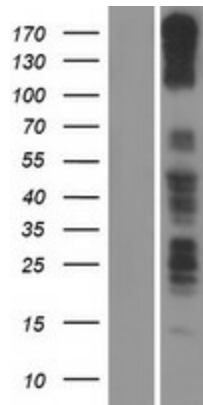
ORF Size: 4041 bp

OTI Disclaimer:	The molecular sequence of this clone aligns with the gene accession number as a point of reference only. However, individual transcript sequences of the same gene can differ through naturally occurring variations (e.g. polymorphisms), each with its own valid existence. This clone is substantially in agreement with the reference, but a complete review of all prevailing variants is recommended prior to use. More info
OTI Annotation:	This clone was engineered to express the complete ORF with an expression tag. Expression varies depending on the nature of the gene.
Components:	The ORF clone is ion-exchange column purified and shipped in a 2D barcoded Matrix tube containing 10ug of transfection-ready, dried plasmid DNA (reconstitute with 100 ul of water).
Reconstitution Method:	<ol style="list-style-type: none">1. Centrifuge at 5,000xg for 5min.2. Carefully open the tube and add 100ul of sterile water to dissolve the DNA.3. Close the tube and incubate for 10 minutes at room temperature.4. Briefly vortex the tube and then do a quick spin (less than 5000xg) to concentrate the liquid at the bottom.5. Store the suspended plasmid at -20°C. The DNA is stable for at least one year from date of shipping when stored at -20°C.
RefSeq:	NM_032968.4
RefSeq Size:	9176 bp
RefSeq ORF:	4044 bp
Locus ID:	27328
UniProt ID:	Q9BZA7
Cytogenetics:	Xq21.31
Domains:	CA
Protein Families:	Transmembrane
MW:	145.1 kDa
Gene Summary:	This gene belongs to the protocadherin gene family, a subfamily of the cadherin superfamily. The encoded protein consists of an extracellular domain containing 7 cadherin repeats, a transmembrane domain and a cytoplasmic tail that differs from those of the classical cadherins. The gene is located in a major X/Y block of homology and its Y homolog, despite divergence leading to coding region changes, is the most closely related cadherin family member. The protein is thought to play a fundamental role in cell-cell recognition essential for the segmental development and function of the central nervous system. Disruption of this gene may be associated with developmental dyslexia. Alternative splicing results in multiple transcript variants. [provided by RefSeq, Jun 2014]

Product images:



Circular map for RC222228



Western blot validation of overexpression lysate (Cat# [LY409852]) using anti-DDK antibody (Cat# [TA50011-100]). Left: Cell lysates from untransfected HEK293T cells; Right: Cell lysates from HEK293T cells transfected with RC222228 using transfection reagent MegaTran 2.0 (Cat# [TT210002]).