

Product datasheet for RC222216

ERLIN1 (NM_001100626) Human Tagged ORF Clone

Product data:

Product Type:	Expression Plasmids
Product Name:	ERLIN1 (NM_001100626) Human Tagged ORF Clone
Tag:	Myc-DDK
Symbol:	ERLIN1
Synonyms:	C10orf69; Erlin-1; KE04; KEO4; SPFH1; SPG62
Mammalian Cell Selection:	Neomycin
Vector:	pCMV6-Entry (PS100001)
E. coli Selection:	Kanamycin (25 ug/mL)
ORF Nucleotide Sequence:	>RC222216 ORF sequence Red=Cloning site Blue=ORF Green=Tags(s)

TTTTGTAATACGACTCACTATAGGGCGGCCGGAATTCGTCGACTGGATCCGGTACCGAGGAGATCTGCC
GCC**CGATCGCC**

ATGACTCAAGCCCGGTTCTGGTGGCTGCAGTGGTGGGGTTGGTGGCTGTCTGCTACGCCTCCATCC
ACAAGATTGAGGAGGGCCATCTGGCTGTGTACTACAGGGGAGGAGCTTTACTAACTAGCCCCAGTGGACC
AGGCTATCATATCATGTTGCCTTTCATTACTACGTTTCAGATCTGTGCAGACAACACTACAACTGATGAA
GTTAAAAATGTGCCTTGTGGAACAAGTGGTGGGGTCATGATCTATATTGACCGAATAGAAGTGGTTAATA
TGTTGGCTCCTTATGCAGTGTGGATATCGTGAGGAATACTGCAGATTATGACAAGACCTTAATCTT
CAATAAAATCCACCATGAGCTGAACCAAGTTCGCAAGTCCACACTTCAGGAAGTTTACATTGAATTG
TTTGATCAAATAGATGAAAACCTGAAGCAAGCTCTGCAGAAAGACTTAAACCTCATGGCCCCAGGTCTCA
CTATACAGGCTGTGCGTGTACAAAACCCAAAATCCCAGAAAGCCATAAGAAGAAATTTGAGTTAATGGA
GGCTGAGAAGACAAAACCTCCTTAGCTGCACAGAAAACAAAAGGTTGGGAAAAAGAAGCTGAGACAGAG
AGGAAAAAGGCAGTTATAGAAGCAGAGAAGATTGCACAAGTGGCAAAAATTCGGTTTCAGCAGAAAGTGA
TGGAAAAAGAACTGAAAAGCGCATTCTGAAATCGAAGATGCTGCATTCTGGCCCGAGAGAAAGCGAA
AGCAGATGCTGAATATTATGCTGCACACAAATATGCCACCTCAAACAAGCACAAGTTGACCCCGGAATAT
CTGGAGCTCAAAAAGTACCAGGCCATTGCTTCTAACAGTAAGATCTATTTGGCAGCAACATCCCTAACA
TGTTTCGTGGACTCCTCATGTGCTTTGAAATATTCAGATATTAGGACTGGAAGAGAAAAGCTCACTCCCTC
TAAGGAGGCTCTTGAACCTCTGGAGAGAACGTATCCAAAACAAGAGACACAGGT

ACGCGTACGCGGCCGCTCGAGCAGAAACTCATCTCAGAAGAGGATCTGGCAGCAATGATATCCTGGATT
ACAAGGATGACGACGATAAGGTTTAA



[View online »](#)

Protein Sequence: >RC222216 protein sequence
Red=Cloning site Green=Tags(s)

MTQARVLVAAVVGLVAVLLYASIHKIEEGHLAVYYRGGALLTSPSGPGYHIMLPFITTFRSVQTTLQTDE
 VKNVPCGTSGGVMIIYIDRIEVNMLAPYAVFDIVRNYTADYDKTLIFNKIHHELNQFCSAHTLQEVYIEL
 FDQIDENLKQALQKDLNLMAPGLTIQAVRVTKPKIPEAIRNFELMEAEKTKLLIAAQKQKVVEKEAETE
 RKKAVIEAEKIAQVAKIRFQKVMEEKETEKRISEIEDAAFLAREKAKADAEYYAAHKYATSNKHKLTPPEY
 LELKKYQAIASNSKIYFGSNIPNMFVSSCALKYSDIRGRESSLPSKEALEPSGENVIQNKESTG

TRTRPLEQKLISEEDLAANDILDYKDDDDKV

Chromatograms: https://cdn.origene.com/chromatograms/mk6326_c09.zip

Restriction Sites: SgfI-MluI

Cloning Scheme:

Cloning sites used for ORF Shuttling:



* The last codon before the Stop codon of the ORF

ACCN: NM_001100626

ORF Size: 1038 bp

OTI Disclaimer: The molecular sequence of this clone aligns with the gene accession number as a point of reference only. However, individual transcript sequences of the same gene can differ through naturally occurring variations (e.g. polymorphisms), each with its own valid existence. This clone is substantially in agreement with the reference, but a complete review of all prevailing variants is recommended prior to use. [More info](#)

OTI Annotation: This clone was engineered to express the complete ORF with an expression tag. Expression varies depending on the nature of the gene.

Components: The ORF clone is ion-exchange column purified and shipped in a 2D barcoded Matrix tube containing 10ug of transfection-ready, dried plasmid DNA (reconstitute with 100 ul of water).

Reconstitution Method:

1. Centrifuge at 5,000xg for 5min.
2. Carefully open the tube and add 100ul of sterile water to dissolve the DNA.
3. Close the tube and incubate for 10 minutes at room temperature.
4. Briefly vortex the tube and then do a quick spin (less than 5000xg) to concentrate the liquid at the bottom.
5. Store the suspended plasmid at -20°C. The DNA is stable for at least one year from date of shipping when stored at -20°C.

RefSeq: [NM_001100626.1](#), [NP_001094096.1](#)

RefSeq Size: 3206 bp

RefSeq ORF: 1047 bp

Locus ID: 10613

UniProt ID: [O75477](#)

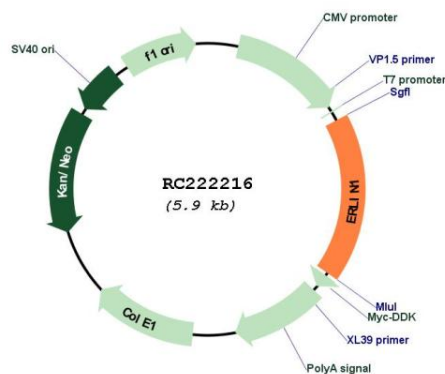
Cytogenetics: 10q24.31

Protein Families: Transmembrane

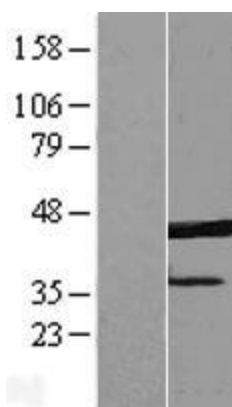
MW: 38.9 kDa

Gene Summary: The protein encoded by this gene is part of a protein complex that mediates degradation of inositol 1,4,5-trisphosphate receptors in the endoplasmic reticulum. The encoded protein also binds cholesterol and regulates the SREBP signaling pathway, which promotes cellular cholesterol homeostasis. Defects in this gene have been associated with spastic paraplegia 62. [provided by RefSeq, Dec 2016]

Product images:



Circular map for RC222216



Western blot validation of overexpression lysate (Cat# [LY420288]) using anti-DDK antibody (Cat# [TA50011-100]). Left: Cell lysates from untransfected HEK293T cells; Right: Cell lysates from HEK293T cells transfected with RC222216 using transfection reagent MegaTran 2.0 (Cat# [TT210002]).