

## Product datasheet for **RC222209**

### **CES3 (NM\_024922) Human Tagged ORF Clone**

#### **Product data:**

Product Type:	Expression Plasmids
Product Name:	CES3 (NM_024922) Human Tagged ORF Clone
Tag:	Myc-DDK
Symbol:	CES3
Synonyms:	ES31
Mammalian Cell Selection:	Neomycin
Vector:	pCMV6-Entry (PS100001)
E. coli Selection:	Kanamycin (25 ug/mL)



[View online »](#)

**ORF Nucleotide Sequence:**

>RC222209 representing NM\_024922  
 Red=Cloning site Blue=ORF Green=Tags(s)

TTTTGTAATACGACTCACTATAGGGCGGCCGGGAATTCGTCGACTGGATCCGGTACCGAGGAGATCTGCC  
 GCC**CGGATCGCC**

ATGGAGAGAGCAGTGAGAGTGGAGTCCGGGGTCTGGTCGGGGTGGTCTGTCTGCTCCTGGCATGCCTG  
 CCACAGCCACTGGGCCCGAAGTTGCTCAGCCTGAAGTAGACACCACCCTGGGTCGTGCGAGGCCGGCA  
 GGTGGGCGTGAAGGGCACAGACCGCCTTGTGAATGCTTTCTGGGCATTCCATTTGCCACGCCGCACTG  
 GGCCCTGACCGGTTCTCAGCCCCACACCAGCACAGCCCTGGGAGGGTGTGCGGGATGCCAGCACTGCGC  
 CCCCATGTGCCTACAAGACGTGGAGAGCATGAACAGCAGCAGATTTGCTCCTCAACGGAAAAACAGCAGAT  
 CTTCTCCGTTTCAGAGGACTGCCTGGTCTCAACGTCTATAGCCAGCTGAGGTCCCCGAGGGTCCGGT  
 AGGCCGGTTCATGGTATGGGTCCATGGAGGCGCTGATAACTGGCGTCCACCTCTACGATGGATCAG  
 CTCTGGCTGCCTATGGGGATGTGGTCTGTGGTTACAGTCCAGTACCGCCTGGGGTCTTGGCTTCTCAG  
 CACTGGAGATGAGCATGCACCTGGCAACCAGGGCTTCTAGATGTGGTAGCTGCTTTCGCGTGGGTGCAA  
 GAAAAATCGCCCCCTTCGGGGGTGACCTCAACTGTGCTACTGTCTTTGGTGGATCTGCCGTGGGAGCA  
 TCATCTCTGGCCTGGTCTGTCCCCAGTGGCTGCAGGGCTGTTCCACAGAGCCATCACACAGAGTGGGGT  
 CATCACCACCCAGGGATCATCGACTCTCACCTTGGCCCTAGCTCAGAAAATCGCAAACCTTGGCC  
 TGCAGTCCAGCTCCCCGGCTGAGATGGTGCAGTGCCTCAGCAGAAAAGAAGGAGAAGAGCTGGTCTTA  
 GCAAGAAGCTGAAAAATACTATCTATCTCTCACCGTTGATGGCACTGTCTTCCCCAAAAGCCCCAAGGA  
 ACTCCTGAAGGAGAAGCCCTTCCACTCTGTGCCCTTCTCATGGGTGTCAACAACCATGAGTTACAGTGG  
 CTCATCCCCAGGGGCTGGGGTCTCCTGGATACAATGGAGCAGATGAGCCGGGAGGACATGCTGGCCATCT  
 CAACACCCGTCTTGACCAGTCTGGATGTGCCCTGAGATGATGCCACCCTCATAGATGAATAACTAGG  
 AAGCAACTCGGACGCACAAGCCAAATGCCAGGCGTTCAGGAATTCATGGGTGACGTATTCAATCAATGTT  
 CCCACCGTCAGTTTTTCAAGATACCTTCGAGATTCTGGAAGCCCTGTCTTTTCTATGAGTTCAGCATC  
 GACCCAGTTCTTTTGCGAAGATCAAACCTGCCTGGGTGAAGGCTGATCATGGGGCCGAGGGTGTCTTTGT  
 GTTCGGAGGTCCCTTCTCATGGACGAGAGCTCCCGCCTGGCCTTCCAGAGGCCACAGAGGAGGAGAAG  
 CAGCTAAGCCTCACCATGATGGCCAGTGGACCACTTTGCCGGACAGGGGACCCCAATAGCAAGGCTC  
 TGCCTCCTTGGCCCAATTCAACCAGGCGGAACAATATCTGGAGATCAACCCAGTCCACGGGCCGGACA  
 GAAGTTCAGGGAGGCTGGATGCAGTTCTGGTCTAGAGACGCTCCCAGCAAGATAACAACAGTGGCACCAG  
 AAGCAGAAGAACAGGAAGGCCAGGAGACCTC

**ACGCGT**ACGCGGCCGCTCGAGCAGAAACTCATCTCAGAAGAGGATCTGGCAGCAAATGATATCCTGGATT  
 ACAAGGATGACGACGATAAGGTTTAA

**Protein Sequence:**

>RC222209 representing NM\_024922  
 Red=Cloning site Green=Tags(s)

MERAVRVESGVLVGVVCLLLACPATATGPEVAQPEVDTTLGRVGRQVGVKGTDRLLVNVFLGIPFAQPPL  
 GPDRFSAPHPAQWEGVRDASTAPPMCLQDVESMNSRFVNLGKQQIFSVSEDLVNLVYSPAIEVPAGSG  
 RPVMVWVHGGALITGAATSVDGSALAAAGYDVVVVTVQYRLGVLGFFSTGDEHAPGNQGLDVVAALRWQ  
 ENIAPFGDLNVCVTFVGGSSAGSIIISGLVLSVAAGLFHRAITQSGVITTPGIIDSHPWPLAQKIANTLA  
 CSSSSPAEMVQCLQQKEGEELVLSKLLKNTIYPLTVDGTVPKSPKELLKEKPFHSVPFLMGVNNHEFSW  
 LIPRGWLLDTMEQMSREDMLAISTPVL TSLDVPPPEMPTVIDEYLGNSDAQAKCQAFQEFMGDVF INV  
 PTVSFSRYLRDSSGSPVFFYEFQHRPSSF AKIKPAWVKADHGAEGAFVFGGPF LMDESSRLAFPEATEEEK  
 QLSLTMMAQWTHFARTGDPNSKALPPWPQFNQAEQYLEINPVPRAGQKFREAWMQFWSSETLPSKIQQWHQ  
 KQKNRKAQEDL

**TR**TRPLEQKLISEEDLAANDILDYKDDDDKV

**Chromatograms:**

[https://cdn.origene.com/chromatograms/mk8041\\_a03.zip](https://cdn.origene.com/chromatograms/mk8041_a03.zip)

**Restriction Sites:**

Sgfl-Mlul

**Cloning Scheme:**


**ACCN:** NM\_024922

**ORF Size:** 1713 bp

**OTI Disclaimer:** The molecular sequence of this clone aligns with the gene accession number as a point of reference only. However, individual transcript sequences of the same gene can differ through naturally occurring variations (e.g. polymorphisms), each with its own valid existence. This clone is substantially in agreement with the reference, but a complete review of all prevailing variants is recommended prior to use. [More info](#)

**OTI Annotation:** This clone was engineered to express the complete ORF with an expression tag. Expression varies depending on the nature of the gene.

**Components:** The ORF clone is ion-exchange column purified and shipped in a 2D barcoded Matrix tube containing 10ug of transfection-ready, dried plasmid DNA (reconstitute with 100 ul of water).

**Reconstitution Method:**

1. Centrifuge at 5,000xg for 5min.
2. Carefully open the tube and add 100ul of sterile water to dissolve the DNA.
3. Close the tube and incubate for 10 minutes at room temperature.
4. Briefly vortex the tube and then do a quick spin (less than 5000xg) to concentrate the liquid at the bottom.
5. Store the suspended plasmid at -20°C. The DNA is stable for at least one year from date of shipping when stored at -20°C.

**RefSeq:** [NM\\_024922.6](#)

**RefSeq Size:** 3906 bp

**RefSeq ORF:** 1716 bp

**Locus ID:** 23491

**UniProt ID:** [Q6UWW8](#)

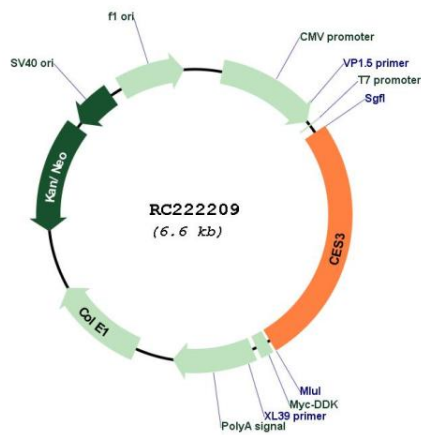
**Cytogenetics:** 16q22.1

**Protein Families:** Druggable Genome

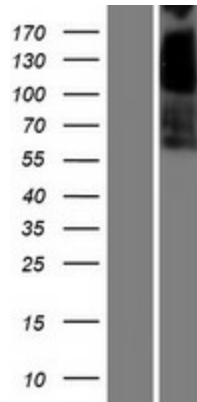
**MW:** 62.1 kDa

**Gene Summary:** This gene encodes a member of the carboxylesterase large family. The family members are responsible for the hydrolysis or transesterification of various xenobiotics, such as cocaine and heroin, and endogenous substrates with ester, thioester, or amide bonds. They may participate in fatty acyl and cholesterol ester metabolism, and may play a role in the blood-brain barrier system. This gene is expressed in several tissues, particularly in colon, trachea and in brain, and the protein participates in colon and neural drug metabolism. Multiple alternatively spliced transcript variants encoding distinct isoforms have been reported, but the biological validity and/or full-length nature of some variants have not been determined. [provided by RefSeq, Jun 2010]

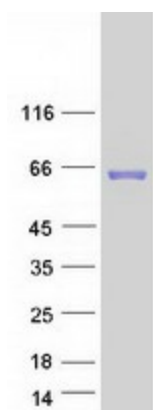
**Product images:**



Circular map for RC222209



Western blot validation of overexpression lysate (Cat# [LY410962]) using anti-DDK antibody (Cat# [TA50011-100]). Left: Cell lysates from untransfected HEK293T cells; Right: Cell lysates from HEK293T cells transfected with RC222209 using transfection reagent MegaTran 2.0 (Cat# [TT210002]).



Coomassie blue staining of purified CES3 protein (Cat# [TP322209]). The protein was produced from HEK293T cells transfected with CES3 cDNA clone (Cat# RC222209) using MegaTran 2.0 (Cat# [TT210002]).