

## Product datasheet for RC222205

### plasticity related gene 3 (PLPPR1) (NM\_207299) Human Tagged ORF Clone

#### Product data:

|                           |   |
|---------------------------|---|
| Product Type:             | Expression Plasmids   |
| Product Name:             | plasticity related gene 3 (PLPPR1) (NM_207299) Human Tagged ORF Clone |
| Tag:                      | Myc-DDK   |
| Symbol:                   | plasticity related gene 3   |
| Synonyms:                 | LPPR1; PRG-3  |
| Mammalian Cell Selection: | Neomycin  |
| Vector:                   | pCMV6-Entry (PS100001)  |
| E. coli Selection:        | Kanamycin (25 ug/mL)  |
| ORF Nucleotide Sequence:  | >RC222205 ORF sequence<br>Red=Cloning site Blue=ORF Green=Tags(s)     |

TTTTGTAATACGACTCACTATAGGGCGCCGGGAATTCGTCGACTGGATCCGGTACCGAGGAGATCTGCC  
GCC**CGATCGCC**

ATGGCTGTAGGAAACAACACTCAACGAAGTTATCCATCATCCCCTGTTTTATTTGTTGAGCTTGTCATCATGGCTGGGACAGTGTCTGCCTACTACTTCGAATGCACTGACACTTTTCAGGTGCATATCCAAGG  
ATTCTTCTGT CAGGACGGAGACTTAATGAAGCCTTACCCAGGGACAGAGGAAGAAAGCTTCATCACCCCT  
CTGGTGTCTATTGTGTGCTGGCTGCCACCCCAACTGCTATTATTTTTATTGGTGAGATATCCATGTATT  
TCATAAAATCAACAAGAGAATCCCTGATTGCTCAGGAGAAAACAATTCTGACCGGAGAATGCTGTTACCT  
GAACCCCTTACTTCGAAGGATCATAAGATTACAGGGGTGTTGCATTTGGACTTTTGGCTACTGACATT  
TTTGTAACGCCGCAAGTGGTCACTGGGCACTTAACGCCATATTCCTGACTGTGTGCAAGCCAACT  
ACACCAGTGCAGACTGCCAAGCGCACACCAGTTTATAACAATGGGAACATTTGTACTGGGACCTGGA  
AGTGATAGAAAAGGCTCGGAGATCCTTTCCCTCCAACACGCTGTCTGAGCATTACTCCGCTTATAT  
GCCACGATGTATATTACAAGACAATCAAGACGAAGAGCAGTCGACTGGCCAAGCCGGTGTGTGCCTCG  
GAACTCTCTGCACAGCCTTCTGACAGGCCTCAACCGGTCTCTGAGTATCGGAACCACTGCTCGGACGT  
GATTGCTGGTTTCATCCTGGGCACTGCAGTGGCCCTGTTTCTGGGAATGTGTGTGGTTCATAACTTTAAA  
GGAACGCAAGGATCTCCTTCAAACCCAAGCCTGAGGATCCCCGTGGAGTACCCCTAATGGCTTTCCCAA  
GGATAGAAAGCCCTCTGGAAACCTTAAGTGCACAGAATCACTCTGCGTCCATGACCGAAGTTACC

**ACGCGT**ACGCGGCCGCTCGAGCAGAAACTCATCTCAGAAGAGGATCTGGCAGCAAATGATATCCTGGATT  
ACAAGGATGACGACGATAAGGTTTAA



[View online »](#)

**Protein Sequence:** >RC222205 protein sequence  
Red=Cloning site Green=Tags(s)

MAVGNNTQRSYSIIPCFIFVELVIMAGTVLLAYFECTDTFQVHIQGGFCQDGLMKPYPGTEESFITP  
 LVLYCVLAATPTAIIIFIGEISMYFIKSTRESLIAQEKILTGECCYLNPLLRRIIRFTGVFAFGLFATDI  
 FVNAGQVVTGHLTPYFLTVCKPNYTSADCQAHHQFINNGNICTGDLEVIEKARRSFPSKHAALSIYSALY  
 ATMYITSTIKTKSSRLAKPVLCLGTLCTAFLTGLNRVSEYRNHCSVDVIAGFILGTAVALFLGMCVVHNFK  
 GTQGSPSKPKPEDPRGVPLMAFPRIESPLETLSAQNHSASMEVT

TRTRPLEQKLISEEDLAANDILDYKDDDDKV

**Chromatograms:** [https://cdn.origene.com/chromatograms/mk6537\\_c03.zip](https://cdn.origene.com/chromatograms/mk6537_c03.zip)

**Restriction Sites:** SgfI-MluI

**Cloning Scheme:**

Cloning sites used for ORF Shuttling:



\* The last codon before the Stop codon of the ORF

**ACCN:** NM\_207299

**ORF Size:** 975 bp

**OTI Disclaimer:** The molecular sequence of this clone aligns with the gene accession number as a point of reference only. However, individual transcript sequences of the same gene can differ through naturally occurring variations (e.g. polymorphisms), each with its own valid existence. This clone is substantially in agreement with the reference, but a complete review of all prevailing variants is recommended prior to use. [More info](#)

**OTI Annotation:** This clone was engineered to express the complete ORF with an expression tag. Expression varies depending on the nature of the gene.

**Components:** The ORF clone is ion-exchange column purified and shipped in a 2D barcoded Matrix tube containing 10ug of transfection-ready, dried plasmid DNA (reconstitute with 100 ul of water).

**Reconstitution Method:**

1. Centrifuge at 5,000xg for 5min.
2. Carefully open the tube and add 100ul of sterile water to dissolve the DNA.
3. Close the tube and incubate for 10 minutes at room temperature.
4. Briefly vortex the tube and then do a quick spin (less than 5000xg) to concentrate the liquid at the bottom.
5. Store the suspended plasmid at -20°C. The DNA is stable for at least one year from date of shipping when stored at -20°C.

**RefSeq:** [NM\\_207299.2](#)

**RefSeq Size:** 2461 bp

**RefSeq ORF:** 978 bp

**Locus ID:** 54886

**UniProt ID:** [Q8TBJ4](#)

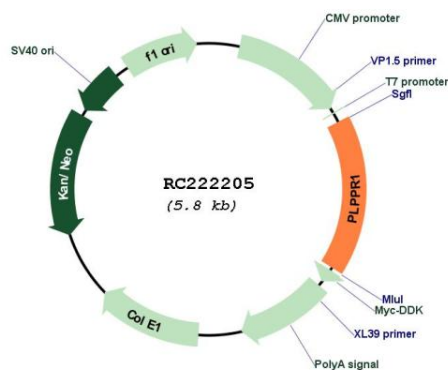
**Cytogenetics:** 9q31.1

**Protein Families:** Phosphatase, Transmembrane

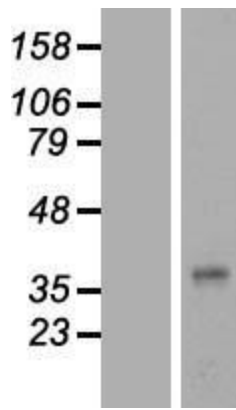
**MW:** 35.8 kDa

**Gene Summary:** This gene encodes a member of the plasticity-related gene (PRG) family. Members of the PRG family mediate lipid phosphate phosphatase activity in neurons and are known to be involved in neuronal plasticity. The protein encoded by this gene does not perform its function through enzymatic phospholipid degradation. This gene is strongly expressed in brain. It shows dynamic expression regulation during brain development and neuronal excitation. Alternatively spliced transcript variants encoding the same protein have been observed. [provided by RefSeq, Jul 2008]

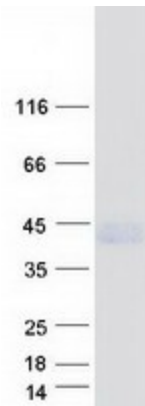
## Product images:



Circular map for RC222205



Western blot validation of overexpression lysate (Cat# [LY404081]) using anti-DDK antibody (Cat# [TA50011-100]). Left: Cell lysates from untransfected HEK293T cells; Right: Cell lysates from HEK293T cells transfected with RC222205 using transfection reagent MegaTran 2.0 (Cat# [TT210002]).



Coomassie blue staining of purified PLPPR1 protein (Cat# [TP322205]). The protein was produced from HEK293T cells transfected with PLPPR1 cDNA clone (Cat# RC222205) using MegaTran 2.0 (Cat# [TT210002]).