

Product datasheet for RC222204

ERGIC3 (NM_198398) Human Tagged ORF Clone

Product data:

Product Type:	Expression Plasmids
Product Name:	ERGIC3 (NM_198398) Human Tagged ORF Clone
Tag:	Myc-DDK
Symbol:	ERGIC3
Synonyms:	C2orf47; C20orf47; CGI-54; dj477O4.2; Erv46; NY-BR-84; PRO0989; SDBCAG84
Mammalian Cell Selection:	Neomycin
Vector:	pCMV6-Entry (PS100001)
E. coli Selection:	Kanamycin (25 ug/mL)
ORF Nucleotide Sequence:	>RC222204 representing NM_198398 Red=Cloning site Blue=ORF Green=Tags(s)

TTTTGTAATACGACTCACTATAGGGCGGCCGGAATTCGTCGACTGGATCCGGTACCGAGGAGATCTGCC
GCC**CGATCGCC**

ATGGAGGCGCTGGGAAGCTGAAGCAGTTCGATGCCTACCCCAAGACTTTGGAGGACTTCCGGGTCAAGA
CCTGCGGGGGCGCCACCGTGACCATTGTCAGTGGCCTTCTCATGCTGCTACTGTTCTGTCCGAGCTGCA
GTATTACCTCACCACGGAGGTGCATCCTGAGCTCTACGTGGACAAGTCGCGGGGAGATAAAGTGAAGATC
AACATCGATGTACTTTTTCCGCACATGCCTTGTGCCTATCTGAGTATTGATGCCATGGATGTGCCGGAG
AACAGCAGCTGGATGTGGAACACAACCTGTTCAAGCAACGACTAGATAAAGATGGCATCCCCGTGAGCTC
AGAGGCTGAGCGCATGAGCTTGGGAAAGTCGAGGTGACGGTGTGGACCCCTGACTCCCTGGACCCTGAT
CGCTGTGAGAGCTGCTATGGTGTGAGGCAGAAGATATCAAGTGTGTAACACCTGTGAAGATGTGCCGG
AGGCATATCGCCGTAGAGGCTGGGCCTTCAAGAACCAGATACTATTGAGCAGTCCCGCGAGAGGGCTT
CAGCCAGAAGATGCAGGAGCAGAAGATGAAGGCTGCCAGGTGTATGGCTTCTTGGAAAGTCAATAAGGTG
GCCGAAACTTCCACTTTGCCCTGGGAAGAGCTTCCAGCAGTCCCATGTGCACGTACATGCTGTGGAGA
TCCATGACTTGCAGAGCTTTGGCCTTGACAACATCAACATGACCCACTACATCCAGCACCTGTCAATTTGG
GGAGGACTATCCAGGCATTGTGAACCCCTGGACCACACCAATGTCACTGCGCCCAAGCCTCCATGATG
TTCCAGTACTTTGTGAAGTGGTGCCACTGTGTACATGAAGTGGACGGAGAGGTACTGAGGACAATC
AGTTCTCTGTGACCAGACATGAGAAGTTGCCAATGGGCTGTTGGCGACCAAGGCCTTCCCGGAGTCTT
CGTCTCTATGAGCTCTCGCCCATGATGGTGAAGCTGACGGAGAAGCACAGGTCCTTACCCACTTCTGT
ACAGGTGTGTGCCCATCATTGGGGCATGTTACAGTGGCTGGACTCATCGATTGCTCATCTACCACT
CAGCACGACCATCCAGAAGAAAATTGATCTAGGGAAGACAACG

ACGGTACGCGGCCGCTCGAGCAGAACTCATCTCAGAAGAGGATCTGGCAGCAATGATATCCTGGATT
ACAAGGATGACGACGATAAGGTTTAA



[View online »](#)

Protein Sequence: >RC222204 representing NM_198398
Red=Cloning site Green=Tags(s)

```
MEALGKLGKQFDAYPKTLEDFRVKTCGGATVTIVSGLLMLLLFLSELQYYLTTEVHPELYVDKSRGDKLKI
NIDVLFPHMPCAYLSIDAMDVAGEQQLDVEHNLFKQRLDKDGIPVSSEAEERHELKQVEVTVFDPDSLDPD
RCESCYGAEAEEDIKCCNTCEDVREAYRRRGWAFKNPDTIEQCRREGFSQKMQEAKNEGCQVYGFLEVNKV
AGNFHFAPGKSFQQSHVHVHVAIEHDLQSFGLDNINMTHYIQHLSFGEDYPGIVNPLDHTNVTAPQASMM
FQYFVKVVPTVYMKVDGEVLR TNQF SVTRHEKVANGLLDGQGLPGVFLVYELSPMMVKLTEKHRSFTHFL
TGVCAIIGGMFTVAGLIDSLIYHSARAIQKKIDLGKTT
```

TRTRPLEQKLISEEDLAANDILDYKDDDDKV

Chromatograms: https://cdn.origene.com/chromatograms/mk6492_g07.zip

Restriction Sites: SgfI-MluI

Cloning Scheme:



ACCN: NM_198398

ORF Size: 1164 bp

OTI Disclaimer: The molecular sequence of this clone aligns with the gene accession number as a point of reference only. However, individual transcript sequences of the same gene can differ through naturally occurring variations (e.g. polymorphisms), each with its own valid existence. This clone is substantially in agreement with the reference, but a complete review of all prevailing variants is recommended prior to use. [More info](#)

OTI Annotation: This clone was engineered to express the complete ORF with an expression tag. Expression varies depending on the nature of the gene.

Components: The ORF clone is ion-exchange column purified and shipped in a 2D barcoded Matrix tube containing 10ug of transfection-ready, dried plasmid DNA (reconstitute with 100 ul of water).

Reconstitution Method:

1. Centrifuge at 5,000xg for 5min.
2. Carefully open the tube and add 100ul of sterile water to dissolve the DNA.
3. Close the tube and incubate for 10 minutes at room temperature.
4. Briefly vortex the tube and then do a quick spin (less than 5000xg) to concentrate the liquid at the bottom.
5. Store the suspended plasmid at -20°C. The DNA is stable for at least one year from date of shipping when stored at -20°C.

RefSeq: [NM_198398.2](#)

RefSeq Size: 1383 bp

RefSeq ORF: 1167 bp

Locus ID: 51614

UniProt ID: [Q9Y282](#)

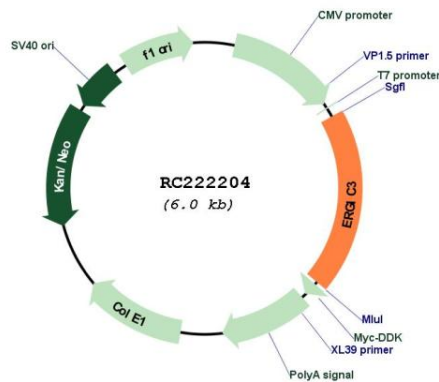
Cytogenetics: 20q11.22

Protein Families: Transmembrane

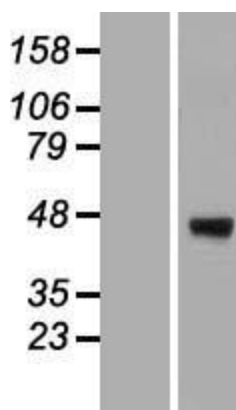
MW: 43.6 kDa

Gene Summary: Possible role in transport between endoplasmic reticulum and Golgi.[UniProtKB/Swiss-Prot Function]

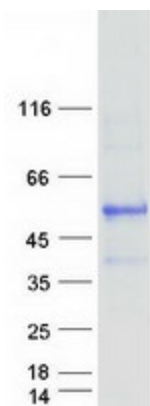
Product images:



Circular map for RC222204



Western blot validation of overexpression lysate (Cat# [LY405049]) using anti-DDK antibody (Cat# [TA50011-100]). Left: Cell lysates from untransfected HEK293T cells; Right: Cell lysates from HEK293T cells transfected with RC222204 using transfection reagent MegaTran 2.0 (Cat# [TT210002]).



Coomassie blue staining of purified ERGIC3 protein (Cat# [TP322204]). The protein was produced from HEK293T cells transfected with ERGIC3 cDNA clone (Cat# RC222204) using MegaTran 2.0 (Cat# [TT210002]).