

Product datasheet for RC222203

POLR1F (NM_001002926) Human Tagged ORF Clone

Product data:

Product Type:	Expression Plasmids
Product Name:	POLR1F (NM_001002926) Human Tagged ORF Clone
Tag:	Myc-DDK
Symbol:	POLR1F
Synonyms:	A43; RPA43; TWISTNB
Mammalian Cell Selection:	Neomycin
Vector:	pCMV6-Entry (PS100001)
E. coli Selection:	Kanamycin (25 ug/mL)
ORF Nucleotide Sequence:	>RC222203 ORF sequence Red=Cloning site Blue=ORF Green=Tags(s)

TTTTGTAATACGACTCACTATAGGGCGGCCGGGAATTCGTCGACTGGATCCGGTACCGAGGAGATCTGCC
GCC**CGGATCGCC**

ATGGCTGCAGGTTGCTCAGAGGCCCGCGGCCAGCGGGCTTCTGATGGGTCTCTGGTAGGGCAGGCTG
GCGTCCTGCCTTGCTAGAGTTGCCGACTTATGCCGCTGCTTGTGCGCTGGTGAACAGTCGCTACTCATG
CCTGGTGGCCGGGCCGACCAAAGGCACATCGCGCTGTCGCCCGCTACCTAACAGGAAACGCACCGGC
ATTCGAGAACAGCTTGATGCGGAGCTCCTTCGCTATTCTGAGAGCCTTTAGGTGTCCTATTGCATATG
ATAACATCAAAGTTGTGGGAGAGCTTGGAGATTTTATGATGATCAAGGACACATTCATCTTAACATTGA
AGCCGATTTTGTATTTTCTGCCCTGAACCAGGGCAGAAGCTTATGGGTATAGTTAATAAAGTGTCTTCT
AGCCACATTGGCTGTTTAGTACATGGGTGTTTCAATGCCTCCATTCTAAACCTGAGCAGTTGTCAGCTG
AGCAGTGGCAAACCATGGAGATAAATGCGGTGATGAACTAGAAATTTGAAGTATTTGTTTAGACTCAGA
TGCTGCTGGAGTATTCTGCATTCGGGAAAACTAAATACACAAGTTTACAATTCAGCGCTCTGAAGTT
TCTGAAGAAGTTACAGAAAAATGGCACTGAGGAAGCTGCTAAAAACCTAAAAAGAAGAAAAAGAAGAAAG
ACCCAGAGACATATGAAGTGGACAGTGGTACCACAAAGCTAGCAGATGATGCAGATGACACTCCAATGGA
AGAGTCAGCCCTGCAGAATACTAATAATGCGAATGGCATCTGGGAGGAGGACCAAGAAAAAGAAGAAAG
AAGAAAAAGCACCAGGAAGTTTCAGGACCAGGACCCTGTTTTCCAAGGCAGTGACTCCAGTGTTACCAAA
GTGACCATAAAAAAGAAAAAGAAAAAGAAAAACACAGTGAAGAGGCCGAATTTACCCACCTTTGAAATG
CTCACAAAAAGAAAAAGGAAAAAGTAATTTCTT

ACGCGTACGCGGCCGCTCGAGCAGAACTCATCTCAGAAGAGGATCTGGCAGCAAATGATATCCTGGATT
ACAAGGATGACGACGATAAGGTTTAA



[View online »](#)

Protein Sequence: >RC222203 protein sequence
Red=Cloning site Green=Tags(s)

MAAGCSEAPRPAASDGLVQGAGVLPCLLEPTYAAACALVNSRYSLVAGPHQRHIALSPRYLNRKRTG
 IREQLDAELLRYSESLGVPPIAYDNIKVVGELGDIYDDQGHILNIEADFVIFCPEPGQKLMGIVNKVSS
 SHIGCLVHGCNFIKPEQLSAEQWQTEINMGDELEFEVFRLDSDAAGVFCIRGKLNITSLQFKRSEV
 SEEVTENGTEEAAKPKKKKKKKDPETYEVDSTKLADDADTPMEESALQNTNANGIWEEPKKKKK
 KKKKHQEVQDQDPVFQGSDDSGYQSDHKKKKKKRKHSEAEFTPLKCSPKRKGKSNFL

TRTRPLEQKLISEEDLAANDILDYKDDDDKV

Chromatograms: https://cdn.origene.com/chromatograms/mk6605_d10.zip

Restriction Sites: SgfI-MluI

Cloning Scheme:

Cloning sites used for ORF Shuttling:



* The last codon before the Stop codon of the ORF

ACCN: NM_001002926

ORF Size: 1014 bp

OTI Disclaimer: The molecular sequence of this clone aligns with the gene accession number as a point of reference only. However, individual transcript sequences of the same gene can differ through naturally occurring variations (e.g. polymorphisms), each with its own valid existence. This clone is substantially in agreement with the reference, but a complete review of all prevailing variants is recommended prior to use. [More info](#)

OTI Annotation: This clone was engineered to express the complete ORF with an expression tag. Expression varies depending on the nature of the gene.

Components: The ORF clone is ion-exchange column purified and shipped in a 2D barcoded Matrix tube containing 10ug of transfection-ready, dried plasmid DNA (reconstitute with 100 ul of water).

Reconstitution Method:

1. Centrifuge at 5,000xg for 5min.
2. Carefully open the tube and add 100ul of sterile water to dissolve the DNA.
3. Close the tube and incubate for 10 minutes at room temperature.
4. Briefly vortex the tube and then do a quick spin (less than 5000xg) to concentrate the liquid at the bottom.
5. Store the suspended plasmid at -20°C. The DNA is stable for at least one year from date of shipping when stored at -20°C.

RefSeq: [NM_001002926.2](#)

RefSeq Size: 3892 bp

RefSeq ORF: 1017 bp

Locus ID: 221830

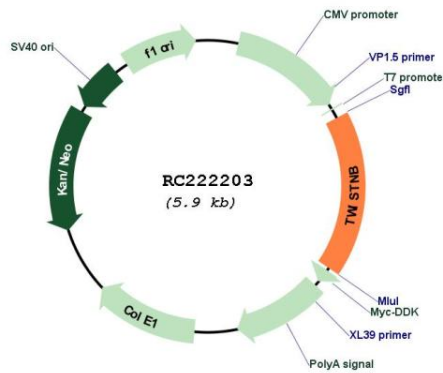
UniProt ID: [Q3B726](#)

Cytogenetics: 7p21.1

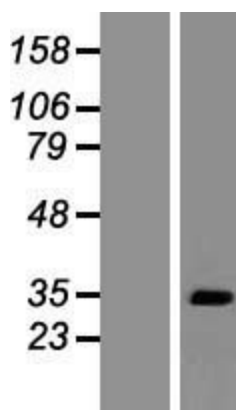
MW: 37.4 kDa

Gene Summary: DNA-dependent RNA polymerase catalyzes the transcription of DNA into RNA using the four ribonucleoside triphosphates as substrates. Component of RNA polymerase I which synthesizes ribosomal RNA precursors. Through its association with RRN3/TIF-IA may be involved in recruitment of Pol I to rDNA promoters.[UniProtKB/Swiss-Prot Function]

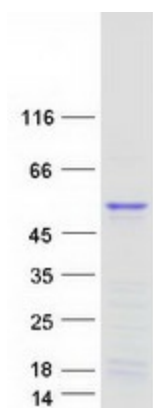
Product images:



Circular map for RC222203



Western blot validation of overexpression lysate (Cat# [LY424120]) using anti-DDK antibody (Cat# [TA50011-100]). Left: Cell lysates from untransfected HEK293T cells; Right: Cell lysates from HEK293T cells transfected with RC222203 using transfection reagent MegaTran 2.0 (Cat# [TT210002]).



Coomassie blue staining of purified TWISTNB protein (Cat# [TP322203]). The protein was produced from HEK293T cells transfected with TWISTNB cDNA clone (Cat# RC222203) using MegaTran 2.0 (Cat# [TT210002]).