

## Product datasheet for **RC222191**

### ZNF276 (NM\_152287) Human Tagged ORF Clone

#### Product data:

Product Type:	Expression Plasmids
Product Name:	ZNF276 (NM_152287) Human Tagged ORF Clone
Tag:	Myc-DDK
Symbol:	ZNF276
Synonyms:	CENP-Z; CENPZ; ZADT; ZFP276; ZNF477
Mammalian Cell Selection:	Neomycin
Vector:	pCMV6-Entry (PS100001)
E. coli Selection:	Kanamycin (25 ug/mL)



[View online »](#)

ORF Nucleotide  
Sequence:

>RC222191 ORF sequence  
 Red=Cloning site Blue=ORF Green=Tags(s)

TTTTGTAATACGACTCACTATAGGGCGGCCGGGAATTCGTCGACTGGATCCGGTACCGAGGAGATCTGCC  
 GCCCGCATCGCC

ATGGGTCCTGTGCGCTCTGCCACGGGAAGTTTTCTCGAGAAGCCTGCGCAGCATCTCCGAGAGGGCGC  
 CTGGAGCGAGCATGGAGAGGCCATCCGCAGAGGAGCGCTGCTCGTACGGGACTTCCAGCGCCTGCTTGG  
 TGTGGCTGTCCGCCAGGACCCACCTTGTCTCCGTTTGTCTGCAAGAGCTGCCACGCCAGTTCTACCAG  
 TGCCACAGCCTTCTCAAGTCTTCTGCAAGAGGTCAACGCTCCCGGCTGGTCCGCGGAAGCCTTGTG  
 CAAAGGTGCGTCCAGCCCAACAGGGGCAGAGGGGAGCGTGTCTGGTGGATCTGATCACATCCAG  
 CCCCCAGTGCCTGCACGGCTTGGTGGGGTGGTGCATGGACATGCGGCCAGCTGCGGGGCCCTGCCCCAC  
 CTTCAGAGGACTGTCTCCGAGTACTGCGGCGTCATCCAGGTCGTGTGGGGCTGCGACCAGGGCCACG  
 ACTACACCATGGATACCAGCTCCAGCTGCAAGGCCTTCTTGTGACAGTGCCTGGCAGTCAAGTGGCC  
 ACGGGACAAAGAGACGGGCCACGGCTGCCCCAGCACCAGGGTGAACCCTGGGGATGCCCTCAGACC  
 TCCAGGGTAGAGGGACAGGGACCCAGTTGGGGCTGAGACCAAGACCCTGCCACAGCAGGATGTGGCC  
 AGCCTCCTTCGGACAGCAGCGGTTGGGGCCAGGTGGGCTTCCCACCTCAGCCAAAGCCTGCCCTTTG  
 CAGGGCCCCAGGGCAGTTGGGTGAGAAGCAGCTTCCATCTTCAACCTCGGATGATCGGGTAAAAGACGAG  
 TTCAGTGACCTTTCTGAGGGAGAGCTTGTGAGTGAAGTGAATAAGCAAGCAAAATGCCAGTCTT  
 CGGACGAGTCTTTGAGCCTTACCCAGAAAGGAAAGTCTCTGGTAAAGAGTGAAGCAAAAGAACCA  
 GAAGTCTGAAGAACAAGAATTCGGAAGAAGCCGGGACCAAGCCCGATGGAAGAAGAAGTTCGTTGT  
 GAGAGGGAGGAGCTTCCCACATCCACAAGTGTCTTACCAGGGTGCACGGCCGTGTACCGAGGGCGTG  
 ACGGCAATGAAGAAGCACATCAAGGAGCACACGAGGAGTCCGGGAGCGGCCCTGCCCCACCCTGGTG  
 CAACAAGGTTTTTCATGATCGACCGCTACCTGCAGCGCCACGTGAAGCTCATCCACACAGAGGTGCGGAAC  
 TATATCTGTGACGAATGTGGACAAACCTTCAAGCAGCGGAAGCACCTTCTCGTCCACCAATGCGACATT  
 CGGGAGCCAAGCCTTTCAGTGTGAGGTCTGTGGTTCAGTGCAGGCAGCGGGCATCCCTCAAGTACCA  
 CATGACCAAAACAAGGCTGAGACTGAGCTGGACTTTGCCTGTGACCAAGTGTGGCCGGCGGTTTGAAG  
 GCCCAACCTCAATGTACATGTCCATGGTGCACCCGCTGACACAGACCAGGACAAGGCCCTGCCCC  
 TGGAGGCGGAACCACCACCTGGGCCACCGACCCCTCTGTGACCACAGAGGGCCAGGCGGTGAAGCCGA  
 ACCACC

ACGCGTACGCGGCCGCTCGAGCAGAACTCATCTCAGAAGAGGATCTGGCAGCAAATGATATCCTGGATT  
 ACAAGGATGACGACGATAAGGTTTAA

## Protein Sequence:

>RC222191 protein sequence  
 Red=Cloning site Green=Tags(s)

MGHCRLCHGKFSRSLRISERAPGASMERPSAEERVLVRDFQRLLGVAVRQDPTLSPFVCKSCHAQFYQ  
 CHSLLKSFQVNASPAGRRKPCAKVGAQPPTGAEAGCLVDLITSSPQCLHGLVGWVHGHAASCGALPH  
 LQRTLSSSEYCGVIQVWVGCDQGHDTMDTSSSCKAFLDLSALAVKWPRDKETAPRLPQHRGWNPGDAPQT  
 SQGRGTGTPVGAETKLPSTDVAQPPSDSDAVGPRSGFPPQPSLPLCRAPGQLGEKQLPSSTSDDRVKDE  
 FSDLSEGDVLESDENDKKQNAQSDESFEPYPERKVSQKSEKAEKSEEPRIKKPGPKGWKKLRC  
 EREELPTIHKCPYQGCTAVYRGADGMKKHIKEHHEVRRERPCPHPGCNKVMIDRYLQRHVKLIHTEVRN  
 YICDECGQTFKQRKHLVHQMRHSGAKPLQCEVCGFQCRQRASLKYHMTKHAETELDFACDQCGRREFK  
 AHNLNVMHSMVHPLTQTQDKALPLEAEPGPPSPSVTTEGQAVKPEPT

TRTRPLEQKLISEEDLAANDILDYKDDDDKV

## Chromatograms:

[https://cdn.origene.com/chromatograms/mk6560\\_g11.zip](https://cdn.origene.com/chromatograms/mk6560_g11.zip)

## Restriction Sites:

Sgfl-MluI

**Cloning Scheme:**


**ACCN:** NM\_152287

**ORF Size:** 1617 bp

**OTI Disclaimer:** The molecular sequence of this clone aligns with the gene accession number as a point of reference only. However, individual transcript sequences of the same gene can differ through naturally occurring variations (e.g. polymorphisms), each with its own valid existence. This clone is substantially in agreement with the reference, but a complete review of all prevailing variants is recommended prior to use. [More info](#)

**OTI Annotation:** This clone was engineered to express the complete ORF with an expression tag. Expression varies depending on the nature of the gene.

**Components:** The ORF clone is ion-exchange column purified and shipped in a 2D barcoded Matrix tube containing 10ug of transfection-ready, dried plasmid DNA (reconstitute with 100 ul of water).

- Reconstitution Method:**
1. Centrifuge at 5,000xg for 5min.
  2. Carefully open the tube and add 100ul of sterile water to dissolve the DNA.
  3. Close the tube and incubate for 10 minutes at room temperature.
  4. Briefly vortex the tube and then do a quick spin (less than 5000xg) to concentrate the liquid at the bottom.
  5. Store the suspended plasmid at -20°C. The DNA is stable for at least one year from date of shipping when stored at -20°C.

**RefSeq:** [NM\\_152287.4](#)

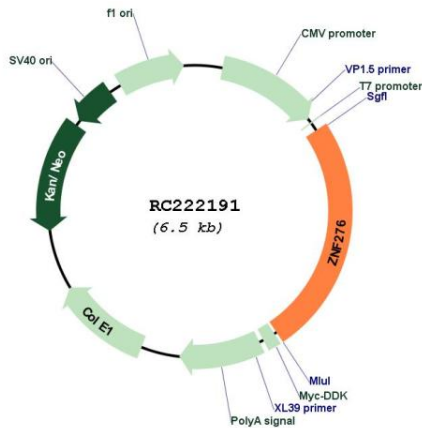
**RefSeq Size:** 4611 bp

**RefSeq ORF:** 1620 bp

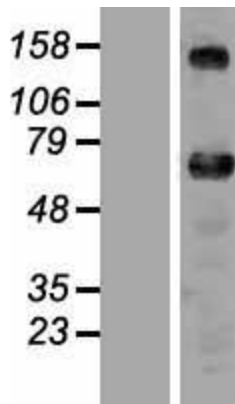
**Locus ID:** 92822

**UniProt ID:** [Q8N554](#)

**Cytogenetics:** 16q24.3  
**Domains:** zf-C2H2  
**Protein Families:** Transcription Factors  
**MW:** 59.8 kDa  
**Gene Summary:** May be involved in transcriptional regulation.[UniProtKB/Swiss-Prot Function]

**Product images:**


Circular map for RC222191



Western blot validation of overexpression lysate (Cat# [LY407669]) using anti-DDK antibody (Cat# [TA50011-100]). Left: Cell lysates from untransfected HEK293T cells; Right: Cell lysates from HEK293T cells transfected with RC222191 using transfection reagent MegaTran 2.0 (Cat# [TT210002]).