

Product datasheet for **RC222189**

FLAD1 (NM_025207) Human Tagged ORF Clone

Product data:

Product Type:	Expression Plasmids
Product Name:	FLAD1 (NM_025207) Human Tagged ORF Clone
Tag:	Myc-DDK
Symbol:	FLAD1
Synonyms:	FAD1; FADS; LSMFLAD; PP591
Mammalian Cell Selection:	Neomycin
Vector:	pCMV6-Entry (PS100001)
E. coli Selection:	Kanamycin (25 ug/mL)



[View online »](#)

ORF Nucleotide Sequence:

>RC222189 representing NM_025207
 Red=Cloning site Blue=ORF Green=Tags(s)

TTTTGTAATACGACTCACTATAGGGCGGCCGGGAATTCGTCGACTGGATCCGGTACCGAGGAGATCTGCC
 GCC**CGGATCGCC**

ATGGGTTGGGATTTGGGAACACGTTTATCCAGAGGCAGGAACAAAGGAGTCGTTGTCAAGGATCTGGT
 TAGAGAAGACTAGGGTCTTCTCGAAGGAAGCAGCGCACGCCTGCTCTCCCCATTGTCTTTCTGGCT
 TCTCCAGGTTCCCTCGACCCAGGACCCCTGTTCCAGGCTATGGCCCCAGTGCCTGTAGACCTGGCA
 GGCCCCCGTGCTTGGACCCCTATTTGGGGTCTGGGTGGTACTGGAGGGCCTGCAGAGGGGCAGAG
 AAGGCAGGACCATGACATCTAGGGCCTCTGAATTTCTCCGGGGCGCAGCGTGACGGCTGGCATCAT
 TGTTGGAGATGAGATCCTTAAGGGACACACTCAGGACACCAACACCTTCTTTCTGTGCCGGACACTGCGC
 TCCCTAGGGTCCAGGTTTGGCAGTCTCAGTTGTACCTGATGAGGTAGCCACCATTGCAGCTGAGGTCA
 CTTCTTTCTCAACCGCTTACCCTATGCTCTCACAGCAGGGGGCATCGGCCCACTCATGATGATGTGAC
 CTTTGAGGCAGTGGCACAGGCCCTTTGGAGATGAGCTGAAGCCACACCCCAAGTTGAAGCAGCCACCAAA
 GCCTAGGAGGGGAAGGCTGGGAGAAGCTATCATTGGTGCCTCCTCTGCCCGCCTGCATTATGGCACAG
 ATCCTTGCACTGGTCAACCTTTCAGATTCCCTCTGGTCTCCGTCGGAAACGTCTACCTCTTCCCAGGCAT
 TCCAGAGCTGCTGCGCGGGTGTGGAGGGGATGAAGGGACTATCCAAAACCCAGCTGTTCAAGTCCAC
 TCAAAGGAGCTATATGTGGCTGTGATGAAGCCTCCATCGCCCCATTCTGGCTGAGGCCAGGCCACT
 TTGGACGTAGGCTTGGCTGGGTTCTACCCTGACTGGGGCAGCAACTACTATCAGGTGAAGCTGACTCT
 AGACTCAGAGGAAGAAGGACCCCTGGAGGAATGCTTGGCTACCTGACTGCCCGTTTGGCCAGGGATCG
 CTGGTCCCCTACATGCCAACGCTGTGGAGCAGGCCAGTGAGGCTGTATACAAACTCGCTGAATCAGGCT
 CTTCTTTGGGAAAAAGGTGGCAGGTGCCCTACAGACATTGAGACCTCCCTGGCTCAGTACAGCCTCAC
 CCAGCTCTGTGGGCTTCAACGGGGCAAGACTGCACTGCCCTCCTGCACCTTCTCATGCAGCTGTG
 CAGAGGAAATTACCTGATGTTCCAAACCCCTCCAGATCCTGTATATCCGCAGCATCTCCCTTTCCCTG
 AGCTGGAACAGTTTCTACAGGACACTATCAAGAGGTATAATCTGCAGATGTTGGAAGCTGAGGGCAGCAT
 GAAGCAGGCCCTGGTGAAGTGCAGGCACGGCACCCCCAGCTGGAGGCTGTCTTATGGGCACCCGCCG
 ACTGACCCTACTCCTGTAGCCTCTGCCCTTTCAGCCCCACTGACCCAGGCTGGCCCGCATTATGCGCA
 TCAACCCACTGCTGGACTGGACCTACAGAGACATCTGGGATTTTCTGCGTCAGCTGTTTGTCCATACTG
 TATCCTGTATGACCGAGGATACACACTCTGGGAGTGGGAGAATACCGTGGGAACCCGGCCCTGAAG
 TGCTGAGCCAGGAGGACCCACATACCGTCCAGCCTATCTACTGGAGAACGAAGAAGAGGAGCGGA
 ACTCCCGACA

ACGCGTACGCGGCCGCTCGAGCAGAAACTCATCTCAGAAGAGGATCTGGCAGCAAATGATATCCTGGATT
 ACAAGGATGACGACGATAAGGTTTAA

Protein Sequence:

>RC222189 representing NM_025207
 Red=Cloning site Green=Tags(s)

MGWDLGTRLFQRQEQRSRLSRIWLEKTRVFLEGSTRTPALPHCLFWLLQVPSTQDPLFPGYGPQCPVDLA
 GPPCLRPLFGGLGGYWRALQRGREGRTMSTRASELSPGRSVTAGIIVGDEILKGHTQDNTFFLCRTL
 SLGVQVCRVSVVPDEVATIAAEVTSFSNRFTHVLTAGGIGPTHDDVTFEVAQAFGDELKPHPKLEAATK
 ALGGEGWEKLSLVPSSARLHYGTDPTGQPFRLVSVRNYYLFPGIPELLRRVLEGMKGLFQNPVAVQFH
 SKELYVADEASIAPIIAEAQAHFRRLGLGSPDWGSNYYQVKLTLDSEEEGPLEECLAYLTARLPQGS
 LVPYMPNAVEQASEAVYKLAESGSSLGKKVAGALQTIETSLAQYSLTQLCVGFNGGKDCTALLHLFHA
 AVQRKLPDVPNPLQILYIRISPFPELEQLQDTIKRYNLQMLEAEGSMKQALGELQARHPQLEAVLMGTRR
 TDPYSCSLCPFSPDPGWPAFMRINPLLDWYRDIWDFLRQLFVPHYCILYDRGYTSLGSRNTVRNPALK
 CLSPGGHPTYPAYLLENEEEERNST

TRTRPLEQKLISEEDLAANDILDYKDDDDKV

Chromatograms:

https://cdn.origene.com/chromatograms/mk8068_e10.zip

Restriction Sites: SgfI-MluI

Cloning Scheme:



ACCN: NM_025207

ORF Size: 1761 bp

OTI Disclaimer: The molecular sequence of this clone aligns with the gene accession number as a point of reference only. However, individual transcript sequences of the same gene can differ through naturally occurring variations (e.g. polymorphisms), each with its own valid existence. This clone is substantially in agreement with the reference, but a complete review of all prevailing variants is recommended prior to use. [More info](#)

OTI Annotation: This clone was engineered to express the complete ORF with an expression tag. Expression varies depending on the nature of the gene.

Components: The ORF clone is ion-exchange column purified and shipped in a 2D barcoded Matrix tube containing 10ug of transfection-ready, dried plasmid DNA (reconstitute with 100 ul of water).

- Reconstitution Method:
1. Centrifuge at 5,000xg for 5min.
 2. Carefully open the tube and add 100ul of sterile water to dissolve the DNA.
 3. Close the tube and incubate for 10 minutes at room temperature.
 4. Briefly vortex the tube and then do a quick spin (less than 5000xg) to concentrate the liquid at the bottom.
 5. Store the suspended plasmid at -20°C. The DNA is stable for at least one year from date of shipping when stored at -20°C.

RefSeq: [NM_025207.5](#)

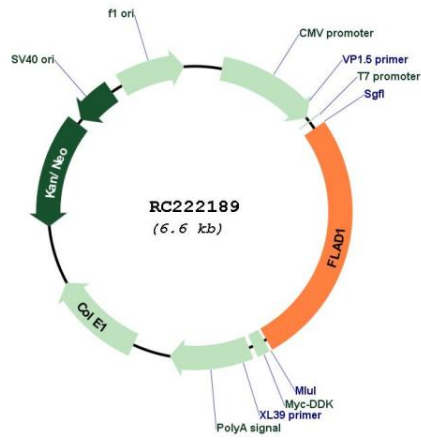
RefSeq Size: 2218 bp

RefSeq ORF: 1764 bp

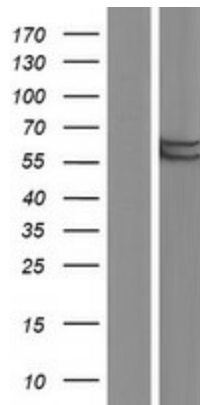
Locus ID: 80308

UniProt ID: [Q8NFF5](#)
Cytogenetics: 1q21.3
Domains: MoCF_biosynth
Protein Pathways: Metabolic pathways, Riboflavin metabolism
MW: 65.1 kDa
Gene Summary: This gene encodes the enzyme that catalyzes adenylation of flavin mononucleotide (FMN) to form flavin adenine dinucleotide (FAD) coenzyme. Alternatively spliced transcript variants encoding distinct isoforms have been observed. [provided by RefSeq, Jul 2008]

Product images:



Circular map for RC222189



Western blot validation of overexpression lysate (Cat# [LY410843]) using anti-DDK antibody (Cat# [TA50011-100]). Left: Cell lysates from untransfected HEK293T cells; Right: Cell lysates from HEK293T cells transfected with RC222189 using transfection reagent MegaTran 2.0 (Cat# [TT210002]).