

## Product datasheet for **RC222185**

### ZNF786 (NM\_152411) Human Tagged ORF Clone

#### Product data:

Product Type:	Expression Plasmids
Product Name:	ZNF786 (NM_152411) Human Tagged ORF Clone
Tag:	Myc-DDK
Symbol:	ZNF786
Mammalian Cell Selection:	Neomycin
Vector:	pCMV6-Entry (PS100001)
E. coli Selection:	Kanamycin (25 ug/mL)



[View online »](#)

**ORF Nucleotide Sequence:**

>RC222185 representing NM\_152411  
 Red=Cloning site Blue=ORF Green=Tags(s)

TTTTGTAATACGACTCACTATAGGGCGGCCGGAATTCGTCGACTGGATCCGGTACCGAGGAGATCTGCC  
 GCC**CGATCGCC**

ATGGCGGAGCCGCTCGCTACCTCTGACTTTTGGAGATGTTGCTATTTATTTCTCCGAGCAAGAATGGC  
 AGGATCTAGAGGCATGGCAGAAGGAACTTTACAAGCATGTGATGAGAAGCAATTATGAGACTCTCGTCTC  
 CTAGATGATGGACTTCCAAAACAGAACTAATATCCTGGATTGAACACGGGGGAGAGCCCTTCAGGAAA  
 TGGAGAGAATCACAGAAATCAGGAAACATAATTTGCTCCTCTGTTGATATGCATTTTGATCCAGGTTTTG  
 AGGAACAGCTGTTTTGGGAAGCCAGCAGGCTATGAATTCAGGAAAACTAAAAGCCATTTCCAATTAGA  
 TCCTGAAAGCCAGTGTCTTTGGATCCTTTGTTTCTTCAGGCCTGACCAAGGCATCACCTCGGGAGC  
 CCACAGAGACACGACGCCAGGGCTCTCCACCACTAGCCTGCGGCCCCAGTGAATCTACCCTAAAAGAAG  
 GAATCCCAGGTCCAGAAATCTGGATCTTCTGGTTTGTGGGACGTCCCCGCTGGGAGACACCCAGCA  
 CCCTTGGCTGTCTGCGGGAAAGCTGTTGGGAGAACAACATTTAGTAATGCACCAGAGAGGCCACTCA  
 AAGGACCGGACACGTAGGCCTGGGAGAAATCAACAAGAGGGCGGAGACGCAGATGCCGTGGAGCAGCC  
 CTCGGGTACAGAGGCACTTCCGGTGTGGCGTGTGCGGTAAAGAGCTTCCGCCGGAAGCTGTGTCTGCTGCG  
 CCATCTGGCGGCCACACGGGGAGGGGCCCTTCCGGAACGCTGACGGTAAAATGTGCTTCCGACACGAG  
 CTGACCCATCCCAGCCACCGCTCCCGCAGCAGGGGGAGAAGCCTGCCAGTGCACCCATGCGGCAAGC  
 GCTCCCTCCCAGTGGACAGCAGCAGGCTCGCCGGTGCCAGCACAGCCGGGAGGGGCCCGCTCTTGGAG  
 AGAAGGCCCGGGGCTCCAGCAGTGTGCACTCGGACAGAAACCAGGCTCGGCCTGCCACAGGAGGGG  
 AACAGCCACCAGAAAGGGACACGGAGGCGCTGCAGCATGGCGCAGAGGGGCCCTGCTCTGCTCGGAGT  
 GTGGCGAGCGCTCCCTATGAGCGCCAGGCTCGCAGCCCTGCAGGGCGCATACTGGAGAAAAGCCCTT  
 CCAGTGTGCGCATTGCACCAAGCGCTTCCGCTGCGCCGCTGCTGCAGGTCCACCAGCACGCGCACGGT  
 GGGGAGAGACCGTTCTCTGCAAGTGTGGCAAGGGCTTCCGCAAGCAGTGTAAACTCACGGAGCACA  
 TTCAGTCCACAGCGGAGAGAAGCCTTCCGGTGTGCAAGTGTGGCAGGAACTTCCGTGAGAGGGGACA  
 GCTGCTGCGGCACCAGCGCTGCACACGGACGAGAAGCCCTTTCAGTGCCAGAGTGTGGCTGAGCTTC  
 CGCCTGGAGAGCATGCTGAGAGCCACCGGCTCCGGCACGGTGGGAGAGGCCGTTCTCTGTAGCGAGT  
 GTGGCAGAGGCTTCAACCACAGTGAAGCTCCGTGAGCACCTGAGAGTGCACAGCGGGGAGAGGCCCTT  
 CCAGTGCCTGAAGTGCACAAAGCGCTTCCGCTGAAGGGCATCCTGAAGGCCACCAGCACACGCACAGC  
 AAGGAGAGGCCGTTCTCGTGCAGGGAGTGTGGCAAGGGCTTACCAGACAATCCAAGCTCACGGAGCACT  
 TGCAGTGCACAGCGGGGAGAGACCTTCCAGTGCCAGAGTGAACAGGAGCTTCCGCTGAAGGGGCA  
 GCTGCTCAGCCATCAGCGCTGCACACGGGAGAGAGGCCCTTCCAGTGTCCGGAGTGCACAAAGCGTAT  
 CGCGTGAAGGCCGACATGAAGGCCACCAGCTGCTGCACAGCGGGGAGATGCCTTTCTCCTGTGAGTGC  
 GCAAGGGCTTTGTGAAACTCAAAGCTCATCGAGCACATCAGAACGCACACGGGAGAGAAGCCTTTTCA  
 GTGTCCCAAGTGTGACAAGATTTCCGCTGAAGGCGCAGCTGCTCAGCCATCAGGGCTGCACACAGGG  
 GAGAGGCCCTTTCACTGCCCTGAGTGTGACAAGAACTCCGGGAAAGGGGACACATGCTGAGGCACCAGC  
 GCATCCACAGGCCGAGAGGCCCTTGCCTGTGGCGATTGTGGAAAGGGCTTCAATTAAGTCTAAGCT  
 TGCGGAGCACATCAGAGTACACAAAAATCCTGTCTGCTCCTGCTCCTGCTCCTGCTCCTGCTCCTGCTC  
 AGCCAAGTGTTCATGATAGAGGCCGATTGGAGT

**ACGCGT**ACGCGGCCGCTCGAGCAGAACTCATCTCAGAAGAGGATCTGGCAGCAATGATATCCTGGATT  
 ACAAGGATGACGACGATAAGGTTTAA

**Protein Sequence:** >RC222185 representing NM\_152411  
Red=Cloning site Green=Tags(s)

MAEPPRLPLTFEDVAIYFSEQEWQDLEAWQKELYKHMRSNYETLVSLDDGLPKPELISWIEHGGEFPRK  
WRESQKSGNIICSSVDMHFDPGFEEQLFWGSQQAMNSGKTKSHFQLDPESQCSFGSFVSFRPDQGITLGS  
PQRHDARAPPPLACGPSESTLKEGIPGPRNLDLPGLWDVPAWESTQHPWPVCGESCWENNHLVMHQRGHS  
KDRTRRAWKFNKRAETQMPWSSPRVQRHFRCGVCCKSFRRKLCLLRHLAAHTGRGPFNRNADGEMCFRHE  
LTHPSHRLPQQGEKPAQCTPCGKRSLPVDSTQARRCQHSREGPASWREGRGASSSVHSGQKPGSRLPQEG  
NSHQEGDTEALQHGAEGPCSCSECGERSPMSARLASPCRAHTGEKPFQCAHCTKRFRLRRLQVHQHAHG  
GERPFSCRKCGKGFQCKLTEHIRVHSGEKPFRCACGRNFRQRLRHQRLHTDEKPFQCEPGLSF  
RLESMLRAHRLRHGGERPFSCSECGRGTQCKLREHLRVHSGERPFQCKLCKDKRFLKILKAHQHTS  
KERPFSCGECGKGFTRQSKLTEHLRVHSGERPFQCEPCNRSFRLKQLLSHQRLHTGERPFQCEPCDKRY  
RVKADMKAHQLLHSGEMPFSCGKGFVKHSLIEHIRTHTGEKPFQCPKCDKSFRLKAQLLSHQGLHTG  
ERPFHCPECDKNFRERGHMLRHQRIHRPERPFACGDCGKGFYKSKLAEHIRVHTKSCPAPNELDIKKRL  
SQLFAMIEADWS

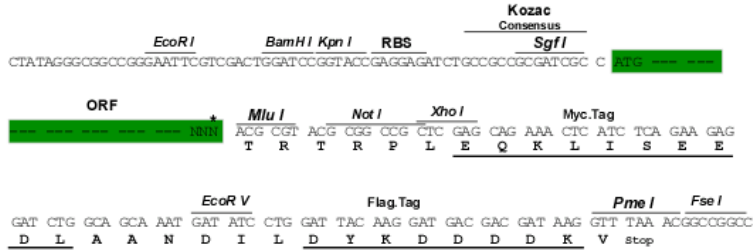
TRTRPLEQKLISEEDLAANDILDYKDDDDKV

**Chromatograms:** [https://cdn.origene.com/chromatograms/mk8120\\_a11.zip](https://cdn.origene.com/chromatograms/mk8120_a11.zip)

**Restriction Sites:** SgfI-MluI

Cloning Scheme:

Cloning sites used for ORF Shutting:



\* The last codon before the Stop codon of the ORF

ACCN: NM\_152411  
 ORF Size: 2346 bp

**OTI Disclaimer:** Due to the inherent nature of this plasmid, standard methods to replicate additional amounts of DNA in E. coli are highly likely to result in mutations and/or rearrangements. Therefore, OriGene does not guarantee the capability to replicate this plasmid DNA. Additional amounts of DNA can be purchased from OriGene with batch-specific, full-sequence verification at a reduced cost. Please contact our customer care team at [custsupport@origene.com](mailto:custsupport@origene.com) or by calling 301.340.3188 option 3 for pricing and delivery.

The molecular sequence of this clone aligns with the gene accession number as a point of reference only. However, individual transcript sequences of the same gene can differ through naturally occurring variations (e.g. polymorphisms), each with its own valid existence. This clone is substantially in agreement with the reference, but a complete review of all prevailing variants is recommended prior to use. [More info](#)

**OTI Annotation:** This clone was engineered to express the complete ORF with an expression tag. Expression varies depending on the nature of the gene.

**Components:** The ORF clone is ion-exchange column purified and shipped in a 2D barcoded Matrix tube containing 10ug of transfection-ready, dried plasmid DNA (reconstitute with 100 ul of water).

**Reconstitution Method:**

1. Centrifuge at 5,000xg for 5min.
2. Carefully open the tube and add 100ul of sterile water to dissolve the DNA.
3. Close the tube and incubate for 10 minutes at room temperature.
4. Briefly vortex the tube and then do a quick spin (less than 5000xg) to concentrate the liquid at the bottom.
5. Store the suspended plasmid at -20°C. The DNA is stable for at least one year from date of shipping when stored at -20°C.

**RefSeq:** [NM\\_152411.4](#)

**RefSeq Size:** 3268 bp

**RefSeq ORF:** 2349 bp

**Locus ID:** 136051

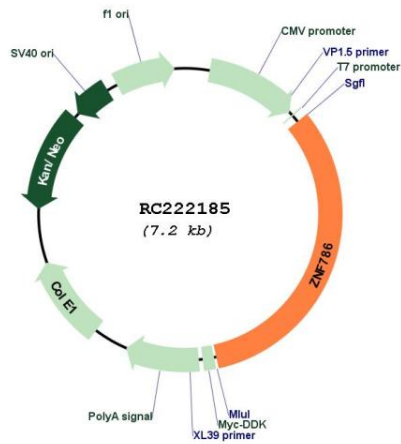
**UniProt ID:** [Q8N393](#)

**Cytogenetics:** 7q36.1

**MW:** 90.3 kDa

**Gene Summary:** May be involved in transcriptional regulation.[UniProtKB/Swiss-Prot Function]

Product images:



Circular map for RC222185