

Product datasheet for **RC222182**

ZNF161 (VEZF1) (NM_007146) Human Tagged ORF Clone

Product data:

Product Type:	Expression Plasmids
Product Name:	ZNF161 (VEZF1) (NM_007146) Human Tagged ORF Clone
Tag:	Myc-DDK
Symbol:	ZNF161
Synonyms:	DB1; ZNF161
Mammalian Cell Selection:	Neomycin
Vector:	pCMV6-Entry (PS100001)
E. coli Selection:	Kanamycin (25 ug/mL)



[View online »](#)

ORF Nucleotide Sequence:

>RC222182 representing NM_007146
 Red=Cloning site Blue=ORF Green=Tags(s)

TTTTGTAATACGACTCACTATAGGGCGGCCGGGAATTCGTCGACTGGATCCGGTACCGAGGAGATCTGCC
 GCC**CGGATCGCC**

ATGGAGGCCAACTGGACCGCTTCTGTCCAGGCCCATGAAGCTTCCCATCACCAACAGCAGGCAGCAC
 AGAACAGCTTGCTGCCCCCTCTGAGCTCTGCCGTGGAGCCCCCTGATCAGAAACCATTGCTTCCAATACC
 AATAACTCAGAAACCTCAGGGTGCACCAGAAACATTAAGGATGCCATTGGGATTAAGAAAGAAAAACCC
 AAAACTTCATTTGTGTGCACTTACTGCAGTAAAGCTTTCAGGGACAGCTATCACCTGAGGCGCCACGAAT
 CCTGCCACACAGGGATCAAGTTGGTGTCCCGCCAAAGAAAAACCCACCACGGTGGTCCCTTATCTC
 TACCATCGCTGGGGACAGCAGCCGAACCTCGTTGGTCTCGACCATTGCAGGCATCTGTCAACAGTCACT
 ACATCTTCTCGGGCACCAACCCAGTAGCAGTGCCAGCACCACAGCTATGCCAGTGACCCAGTCTGTCA
 AGAAACCCAGTAAGCCTGTCAAGAAGAACCATGCTTGTGAGATGTGTGGGAAGGCCTTCCGAGATGTGTA
 CCATCTCAATCGACACAAGCTCTCCATTAGATGAGAAACCTTTGAGTGTCTATTTGTAATCAGCGC
 TTCAAGAGGAAGGACCGGATGACTTACCATGTGAGGTCTCATGAAGGAGGCATCACCAAACCTTACTT
 GCAGTGTTTGTGGAAAGGCTTCTCAAGGCCTGACCACTTAAGCTGTATGTAACATGTCCATTAAC
 AGAAAGACCCCTTCAAATGCCAACGTGCACTGTGCCTTTGCCACCAAAGACAGACTGCGGACACACATG
 GTGCGCCATGAAGGCAAGGTATCATGTAACATCTGTGGGAAGCTCCTGAGTGCAGCATACATCACCAGCC
 ACTTAAAGACTCATGGGCAGAGCCAAAGTATCAACTGTAATACATGTAACAAGGCATCAGTAAACATG
 CATGAGTGAAGAGACCAGTAACCAAAAGCAGCAGCAGCAGCAGCAGCAGCAGCAGCAGCAGCAACAA
 CAACAACAACAACATGTGACAAGCTGGCCAGGGAAGCAAGTAGAAACACTGAGACTGTGGGAAGAAGCTG
 TTAAGCAAGGAAGAAAGAAGCTGTAACCTGTGCCAAACCTCCACGGCTGCTACGACACCTGTGACTCT
 CACTACTCCATTAGTATAACATCCTCTGTCTGTGGACTATGTCAAACCCAGTCACAGTGGCAGCT
 GCAATGAGCATGAGAAGTCCAGTAAATGTTCAAGTGCAGTAAACATAACCAGCCCAATGAACATAGGGC
 ATCCTGTAACATAACCAGTCCATTATCCATGACCTCTCCTTTAACTACTACTACCCAGTCAACCTCCC
 CACCCCGTCACTGCCCCAGTGAATATAGCACACCCTGTACCATCACATCTCCAATGAATCTACCCACA
 CCTATGACATTAGCCGCCCTCTCAATATAGCAATGAGACCTGTAGAGAGCATGCCTTTCTTGCCCAAG
 CTTTGCCTACATACCGCCTTGG

ACGCGTACGCGGCCGCTCGAGCAGAAACTCATCTCAGAAGAGGATCTGGCAGCAAATGATATCCTGGATT
 ACAAGGATGACGACGATAAGGTTTAA

Protein Sequence:

>RC222182 representing NM_007146
 Red=Cloning site Green=Tags(s)

MEANWTAFLFQAHEASHHQQAQNSLLPLLSSAVEPPDQKPLLPITITQKQGAPETLKDAIGIKKEKP
 KTSFVCTYCSKAFRDSYHLRRHESCHTGIKLVSRPKKPTTVVPLISTIAGDSSRSLVSTIAGILSTVT
 TSSSGTNPSSASTTAMPVTSVKKPSKPKVKNHACEMCGKAFRDVYHLNRHKLSHSDEKPFECPICNQR
 FKRKDRMTYHVSHEGGITKPYTCSVCGKGF SRPDHLSCHVKVHSTERPFKQCTCTAAAFATKDLRTHM
 VRHEGKVCNICGKLLSAAYITSHLKTGHQSQSINCNTCKQGISKTCMSEETSQKQQQQQQQQQQQQ
 QQQQHVTSWPGKQVETLRLWEEAVKARKKEAANLCQTSTAATTPVLTTPFSITSSVSSGTMSPNPTVAA
 AMSMRSPVNVSSAVNITSPMNIGHPVITISPLSMTSPLTLTPVNLPTPVTAPVNIHPVITISPMNLPT
 PMTLAAPLNIAMRPVESMPFLPQALPTSPPW

TRTRPLEQKLISEEDLAANDILDYKDDDDKV

Chromatograms:

https://cdn.origene.com/chromatograms/mk6282_f05.zip

Restriction Sites:

Sgfl-MluI

Cloning Scheme:

ACCN: NM_007146

ORF Size: 1563 bp

OTI Disclaimer: Due to the inherent nature of this plasmid, standard methods to replicate additional amounts of DNA in E. coli are highly likely to result in mutations and/or rearrangements. Therefore, OriGene does not guarantee the capability to replicate this plasmid DNA. Additional amounts of DNA can be purchased from OriGene with batch-specific, full-sequence verification at a reduced cost. Please contact our customer care team at custsupport@origene.com or by calling 301.340.3188 option 3 for pricing and delivery.

The molecular sequence of this clone aligns with the gene accession number as a point of reference only. However, individual transcript sequences of the same gene can differ through naturally occurring variations (e.g. polymorphisms), each with its own valid existence. This clone is substantially in agreement with the reference, but a complete review of all prevailing variants is recommended prior to use. [More info](#)

OTI Annotation: This clone was engineered to express the complete ORF with an expression tag. Expression varies depending on the nature of the gene.

Components: The ORF clone is ion-exchange column purified and shipped in a 2D barcoded Matrix tube containing 10ug of transfection-ready, dried plasmid DNA (reconstitute with 100 ul of water).

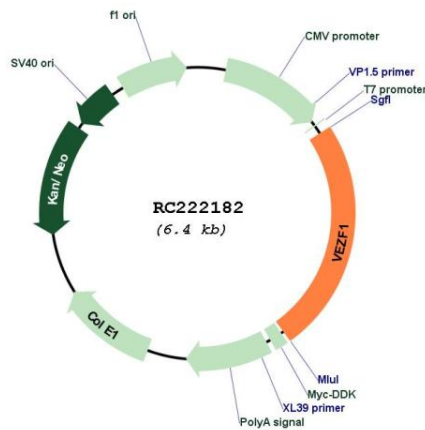
- Reconstitution Method:**
1. Centrifuge at 5,000xg for 5min.
 2. Carefully open the tube and add 100ul of sterile water to dissolve the DNA.
 3. Close the tube and incubate for 10 minutes at room temperature.
 4. Briefly vortex the tube and then do a quick spin (less than 5000xg) to concentrate the liquid at the bottom.
 5. Store the suspended plasmid at -20°C. The DNA is stable for at least one year from date of shipping when stored at -20°C.

RefSeq: [NM_007146.3](#)

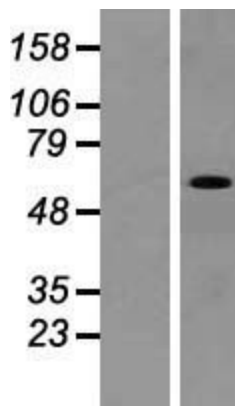
RefSeq Size: 4652 bp
RefSeq ORF: 1566 bp
Locus ID: 7716
UniProt ID: [Q14119](#)
Cytogenetics: 17q22
Domains: zf-C2H2
Protein Families: Transcription Factors
MW: 56.8 kDa

Gene Summary: Transcriptional regulatory proteins containing tandemly repeated zinc finger domains are thought to be involved in both normal and abnormal cellular proliferation and differentiation. ZNF161 is a C2H2-type zinc finger protein (Koyano-Nakagawa et al., 1994 [PubMed 8035792]). See MIM 603971 for general information on zinc finger proteins.[supplied by OMIM, Sep 2008]

Product images:



Circular map for RC222182



Western blot validation of overexpression lysate (Cat# [LY416152]) using anti-DDK antibody (Cat# [TA50011-100]). Left: Cell lysates from untransfected HEK293T cells; Right: Cell lysates from HEK293T cells transfected with RC222182 using transfection reagent MegaTran 2.0 (Cat# [TT210002]).