

Product datasheet for RC222177

FBXO36 (NM_174899) Human Tagged ORF Clone

Product data:

Product Type:	Expression Plasmids
Product Name:	FBXO36 (NM_174899) Human Tagged ORF Clone
Tag:	Myc-DDK
Symbol:	FBXO36
Synonyms:	Fbx36
Mammalian Cell Selection:	Neomycin
Vector:	pCMV6-Entry (PS100001)
E. coli Selection:	Kanamycin (25 ug/mL)
ORF Nucleotide Sequence:	>RC222177 representing NM_174899 Red=Cloning site Blue=ORF Green=Tags(s)

TTTGTGAATACGACTCACTATAGGGCGGCCGGAATTCGTCGACTGGATCCGGTACCGAGGAGATCTGCC
GCC**CGATCGCC**

ATGGCGTCGTGGCTGCCGGAGACTCTCTTTGAACTGTAGGACAAGGCCCGCCGCTAGCAAAGACTATT
ACCAGTTACTGGTCACCCGGTCTCAGGTAATCTTAGATGGTGGAAGATCTCTCTAAGGAGTGAGTATCG
ATCAACAAAACCTGGAGAAGCAAAAGAACCCATGAAGACTTCCTAGAGAATTCACATCTTCAAGGTCAA
ACTGCCTTAATATTTGGTGCAAGAATATTAGACTATGTCATCAATTTTGCAGGTAATTTGACTTCC
TTGAACGGCTCTCAGACGATTTGCTCCTGACTATCATTCTTATCTGGATCTTGAAGATATTGCCAGGCT
TTGTCAAACATCACACAGATTTGCAAAGCTGTGCATGTCTGATAAACTGTGGGAACAGATAGTCCAGTCG
ACCTGCGACACCATCACTCCTGACGTGAGGGCCCTGGCGGAGGACACAGGCTGGAGACAGCTGTTCTTCA
CCAACAAGCTCCAGCTCCAGCGGAGCTCCGCAAGAGGAAACAAAATATGGAAACCTGAGAGAAAAGCA
ACCT

ACGCGTACGCGGCCGCTCGAGCAGAACTCATCTCAGAAGAGGATCTGGCAGCAAATGATATCCTGGATT
ACAAGGATGACGACGATAAGGTTTAA

Protein Sequence:	>RC222177 representing NM_174899 Red=Cloning site Green=Tags(s)
-------------------	--

MASWLPETLFETVGQPPPSKDYYQLLVTRSQVIFRWWKISLRSEYRSTKPGEAKETHEDFLENSHLQGQ
TALIFGARILDYVINFCKGKFDLERLSDDLTTIISYLDLEDIARLCQTSHRFAKLCMSDKLWEQIVQS
TCDTITPDVRLAEDTGWRQLFFTNKLQLRQLRKRKQKYGNLREKQP

TRTRPLEQKLISEEDLAANDILDYKDDDDKV


[View online »](#)

Chromatograms: https://cdn.origene.com/chromatograms/mg4909_d01.zip

Restriction Sites: SgfI-MluI

Cloning Scheme:



ACCN: NM_174899

ORF Size: 564 bp

OTI Disclaimer: The molecular sequence of this clone aligns with the gene accession number as a point of reference only. However, individual transcript sequences of the same gene can differ through naturally occurring variations (e.g. polymorphisms), each with its own valid existence. This clone is substantially in agreement with the reference, but a complete review of all prevailing variants is recommended prior to use. [More info](#)

OTI Annotation: This clone was engineered to express the complete ORF with an expression tag. Expression varies depending on the nature of the gene.

Components: The ORF clone is ion-exchange column purified and shipped in a 2D barcoded Matrix tube containing 10ug of transfection-ready, dried plasmid DNA (reconstitute with 100 ul of water).

Reconstitution Method:

1. Centrifuge at 5,000xg for 5min.
2. Carefully open the tube and add 100ul of sterile water to dissolve the DNA.
3. Close the tube and incubate for 10 minutes at room temperature.
4. Briefly vortex the tube and then do a quick spin (less than 5000xg) to concentrate the liquid at the bottom.
5. Store the suspended plasmid at -20°C. The DNA is stable for at least one year from date of shipping when stored at -20°C.

Note: Plasmids are not sterile. For experiments where strict sterility is required, filtration with 0.22um filter is required.

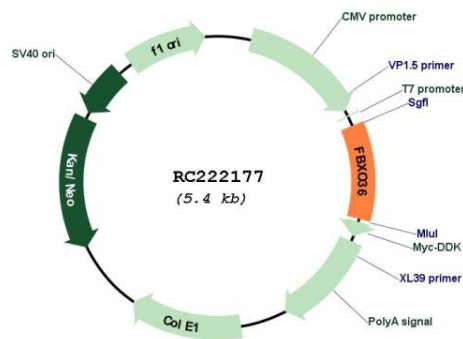
RefSeq: [NM_174899.3](#), [NP_777559.2](#)

RefSeq Size: 924 bp

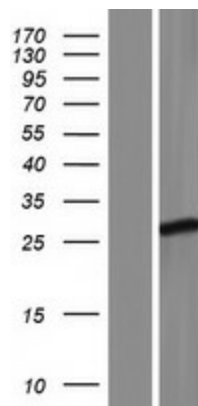
RefSeq ORF: 567 bp
 Locus ID: 130888
 UniProt ID: [Q8NEA4](#)
 Cytogenetics: 2q36.3
 Protein Families: Druggable Genome
 MW: 21.9 kDa

Gene Summary: Members of the F-box protein family, such as FBXO36, are characterized by an approximately 40-amino acid F-box motif. SCF complexes, formed by SKP1 (MIM 601434), cullin (see CUL1; MIM 603134), and F-box proteins, act as protein-ubiquitin ligases. F-box proteins interact with SKP1 through the F box, and they interact with ubiquitination targets through other protein interaction domains (Jin et al., 2004 [PubMed 15520277]).[supplied by OMIM, Mar 2008]

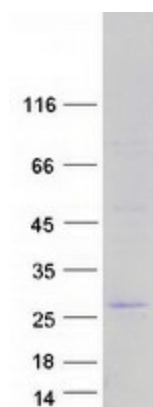
Product images:



Circular map for RC222177



Western blot validation of overexpression lysate (Cat# [LY406384]) using anti-DDK antibody (Cat# [TA50011-100]). Left: Cell lysates from untransfected HEK293T cells; Right: Cell lysates from HEK293T cells transfected with RC222177 using transfection reagent MegaTran 2.0 (Cat# [TT210002]).



Coomassie blue staining of purified FBXO36 protein (Cat# [TP322177]). The protein was produced from HEK293T cells transfected with FBXO36 cDNA clone (Cat# RC222177) using MegaTran 2.0 (Cat# [TT210002]).