

Product datasheet for **RC222163**

CHN 1 (CHN1) (NM_001822) Human Tagged ORF Clone

Product data:

Product Type:	Expression Plasmids
Product Name:	CHN 1 (CHN1) (NM_001822) Human Tagged ORF Clone
Tag:	Myc-DDK
Symbol:	CHN 1
Synonyms:	ARHGAP2; CHN; DURS2; NC; RHOGAP2
Mammalian Cell Selection:	Neomycin
Vector:	pCMV6-Entry (PS100001)
E. coli Selection:	Kanamycin (25 ug/mL)



[View online »](#)

ORF Nucleotide Sequence:

>RC222163 representing NM_001822
 Red=Cloning site Blue=ORF Green=Tags(s)

TTTTGTAATACGACTCACTATAGGGCGGCCGGAATTCGTCGACTGGATCCGGTACCGAGGAGATCTGCC
 GCC**CGGATCGCC**

ATGGCCCTGACCCTGTTTGATACAGATGAATATAGACCTCCTGTTTGAAATCTTACTTATATCAGCTAC
 AACAGGAAGCCCTCATCTCGAAGAATTACCTGACTTGCGAGGTGAAAACAGACCAAAGTATTATGG
 AAGAGAGTTTCATGGCATGATCTCCAGAGAAGCAGCCGACCAGCTCTTGATTGTGGCTGAGGGGAGCTAC
 CTCATCCGGGAGAGCCAGCGGCAGCCAGGGACCTACACTTTGGCTTTAAGATTTGGAAGTCAAACAGAA
 ACTTCAGGCTCTACTACGATGGCAAGCACTTTGTTGGGGAGAAAACGCTTTGAGTCCATCCACGATCTGGT
 GACTGATGGCTTGATTACTCTCTATATTGAAACCAAGGCAGCAGAATACATTGCCAAGATGACGATAAAC
 CCAATTTATGAGCACGTAGGATACACAACCTTAAACAGAGAGCCAGCATACAAAAAACATATGCCAGTCC
 TGAAGAGACACATGATGAGAGAGATTCTACAGGCCAGGATGGGGTGTGAGAGAAAAGTTGACATCACT
 TGTTAGAAGCAACTCTGAAAGAAAACGAGCAAATCCAAAATATGAAAAGATTACAATTTCAAGGTG
 CATACTTCAGAGGGCCACTGGTGTGAATACTGTGCCAATTTATGTGGGGTCTCATTGCTCAGGGAG
 TGAATGTGCAGATTGTGGTTTGAATGTTCCATAAGCAGTGTCCAAAGATGGTCCCAAATGACTGTAGCC
 AGACTTGAAGCATGTCAAAAAGGTGTACAGCTGTGACCTTACGACGCTCGTAAAAGCACATACCACTAAG
 CGGCCAATGGTGGTAGACATGTGCATCAGGGAGATTGAGTCTAGAGGTCTTAATTCTGAAGGACTATACC
 GAGTATCAGGATTTAGTGACCTAATTGAAGATGTCAAGATGGCTTTCCAGAGAGATGGTGAAGGCAGA
 TATTTCTGTGAACATGTATGAAGATCAACATTATCACTGGTGCCTTAACTGTACTTCAGGGATTTG
 CCAATTCACCTCATTACATATGATGCCTACCCTAAGTTTATAGAATCTGCCAAAATATGGATCCGGATG
 AGCAATTGAAACCCCTTCATGAAGCACTGAAACTACTGCCACCTGCTCACTGCGAAAACCCCTCCGGATG
 CATGGCACATCTAAAGAGAGTGACCCTCCACGAAAAGGAGAATCTTATGAATGCAGAGAACCTTGAATC
 GTCTTTGGACCCACCCTTATGAGATCTCCAGAAGTACAGCCATGGCTGCATTGAATGATATACGGTATC
 AGAGACTGGTGGTGGAGCTGCTTATCAAAAACGAAGACATTTTATTT

ACGCGTACGCGGCCGCTCGAGCAGAACTCATCTCAGAAGAGGATCTGGCAGCAAATGATATCCTGGATT
 ACAAGGATGACGACGATAAGGTTTAA

Protein Sequence:

>RC222163 representing NM_001822
 Red=Cloning site Green=Tags(s)

MALTLFDTDEYRPPVWKSYYLQEQEAPHPRITCTCEVENRPKYYGREFHGMISREAADQLLIVAEGSY
 LIRESQRQPGTYTLALRFGSQRNFRLLYYDGKHFVGEKRFESIHDLVTDGLITLYIETKAAEYIAKMTIN
 PIYEHVGYTTLNREPAYKKHMPVLKETHDERDSTGQDGVSEKRLTSLVRRATLKENEQIPKYEKIHNFKV
 HTFRGPHWCEYCANFMWGLIAQGVKCADCGLNVHKQCSKMPNDCKPDLKHVKKVYSCDLTTLVKAHTTK
 RPMVDMCIREIESRGLNSEGLYRVSGFSDLIEDVKMAFDRDGEKADISVNMIEDINIITGALKLYFRDL
 PIPLITYDAYPKFIESAKIMDPDEQLETLHEALKLLPPAHCETLRYLMAHLKRVTLHEKENLMNAENLGI
 VFGPTLMRSPELDAMAALNDIRYQRLVVELLIKNEIDILF

TRTRPLEQKLISEEDLAANDILDYKDDDDKV

Chromatograms:

https://cdn.origene.com/chromatograms/mk6179_a07.zip

Restriction Sites:

Sgfl-Mlul

Cloning Scheme:


ACCN: NM_001822

ORF Size: 1377 bp

OTI Disclaimer: The molecular sequence of this clone aligns with the gene accession number as a point of reference only. However, individual transcript sequences of the same gene can differ through naturally occurring variations (e.g. polymorphisms), each with its own valid existence. This clone is substantially in agreement with the reference, but a complete review of all prevailing variants is recommended prior to use. [More info](#)

OTI Annotation: This clone was engineered to express the complete ORF with an expression tag. Expression varies depending on the nature of the gene.

Components: The ORF clone is ion-exchange column purified and shipped in a 2D barcoded Matrix tube containing 10ug of transfection-ready, dried plasmid DNA (reconstitute with 100 ul of water).

Reconstitution Method:

1. Centrifuge at 5,000xg for 5min.
2. Carefully open the tube and add 100ul of sterile water to dissolve the DNA.
3. Close the tube and incubate for 10 minutes at room temperature.
4. Briefly vortex the tube and then do a quick spin (less than 5000xg) to concentrate the liquid at the bottom.
5. Store the suspended plasmid at -20°C. The DNA is stable for at least one year from date of shipping when stored at -20°C.

RefSeq: [NM_001822.7](#)

RefSeq Size: 2607 bp

RefSeq ORF: 1380 bp

Locus ID: 1123

UniProt ID: [P15882](#)

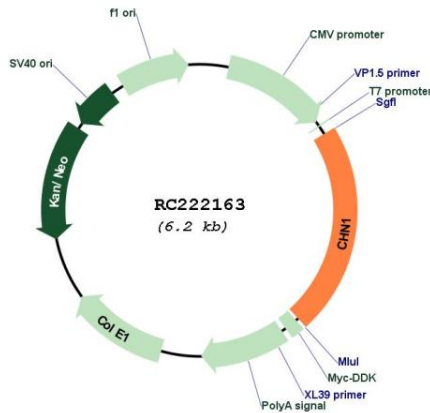
Cytogenetics: 2q31.1

Domains: RhoGAP, SH2, DAG_PE-bind

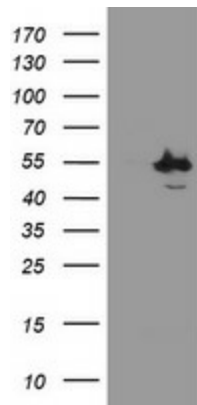
MW: 53 kDa

Gene Summary: This gene encodes GTPase-activating protein for ras-related p21-rac and a phorbol ester receptor. It is predominantly expressed in neurons, and plays an important role in neuronal signal-transduction mechanisms. Mutations in this gene are associated with Duane's retraction syndrome 2 (DURS2). Alternatively spliced transcript variants encoding different isoforms have been described for this gene. [provided by RefSeq, Apr 2011]

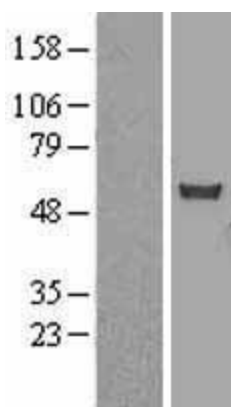
Product images:



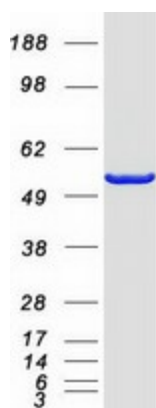
Circular map for RC222163



HEK293T cells were transfected with the pCMV6-ENTRY control (Cat# [PS100001], Left lane) or pCMV6-ENTRY CHN1 (Cat# RC222163, Right lane) cDNA for 48 hrs and lysed. Equivalent amounts of cell lysates (5 ug per lane) were separated by SDS-PAGE and immunoblotted with anti-CHN1 (Cat# [TA505110]). Positive lysates [LY400688] (100ug) and [LC400688] (20ug) can be purchased separately from OriGene.



Western blot validation of overexpression lysate (Cat# [LY400688]) using anti-DDK antibody (Cat# [TA50011-100]). Left: Cell lysates from untransfected HEK293T cells; Right: Cell lysates from HEK293T cells transfected with RC222163 using transfection reagent MegaTran 2.0 (Cat# [TT210002]).



Coomassie blue staining of purified CHN1 protein (Cat# [TP322163]). The protein was produced from HEK293T cells transfected with CHN1 cDNA clone (Cat# RC222163) using MegaTran 2.0 (Cat# [TT210002]).