

Product datasheet for **RC222162**

Rab11 (RAB11B) (NM_004218) Human Tagged ORF Clone

Product data:

Product Type:	Expression Plasmids
Product Name:	Rab11 (RAB11B) (NM_004218) Human Tagged ORF Clone
Tag:	Myc-DDK
Symbol:	Rab11
Synonyms:	H-YPT3; NDAGSCW
Mammalian Cell Selection:	Neomycin
Vector:	pCMV6-Entry (PS100001)
E. coli Selection:	Kanamycin (25 ug/mL)
ORF Nucleotide Sequence:	>RC222162 ORF sequence Red=Cloning site Blue=ORF Green=Tags(s)

TTTTGTAATACGACTCACTATAGGGCGCCGGGAATTCGTCGACTGGATCCGGTACCGAGGAGATCTGCC
GCC**CGATCGCC**

ATGGGGACCCGGGACGACGAGTACGACTACCTATTCAAAGTGGTCTCATCGGGGACTCAGGCGTGGGCA
AGAGCAACCTGCTGTCGCGCTTACCCGCAACGAGTTCAACCTGGAGAGCAAGAGCACCATCGGCGTGGA
GTTCCGCCACCCGAGCATCCAGGTGGACGGCAAGACCATCAAGGCGCAGATCTGGACACCCTGCGCCAG
GAGCGCTACCGCGCCATCACCTCCGCTACTACCGTGGTGCAGTGGGCGCCCTGCTGGTGTACGACATCG
CCAAGCACCTGACCTATGAGAACGTGGAGCGCTGGCTGAAGGAGCTGCGGGACCACGCAGACAGCAACAT
CGTCATCATGCTGGTGGGCAACAAGAGTGACCTGCGCCACCTGCGGGCTGTGCCACTGACGAGGCCCGC
GCCTTCGCAGAAAAGAACAATTGTCCTTCATCGAGACCTCAGCCTTGGATTCCACTAACGTAGAGGAAG
CATTCAAGAACATCCTCAGAGATCTACCGCATCGTGTACAGAAAAGATCGCAGACCGTGTGCCCA
CGACGAGTCCCCGGGGAACAACGTGGTGGACATCAGCGTGCCGCCACCACGGACGGACAGAAGCCCAAC
AAGCTGCAGTCTGCCAGAACCTG

ACGCGTACGCGGGCGCTCGAGCAGAACTCATCTCAGAAGAGGATCTGGCAGCAATGATATCCTGGATT
ACAAGGATGACGACGATAAGGTTTAA



[View online »](#)

Protein Sequence: >RC222162 protein sequence
Red=Cloning site Green=Tags(s)

MGTRDDEYDYLKVVLLIGDSGVGKSNLLSRFTRNEFNLESKSTIGVEFATRSIQVDGKTIKAQIWDTAGQ
 ERYRAITSAYYRGAVGALLVYDIAKHLTYENVERWLKELRDHADSNIIVMLVGNKSDLRHLRAVPTDEAR
 AFAEKNLFSFIETSALDSTNVVEAFKNILTEIYRIVSQKQIADRAAHDESPGNNVVDISVPPTTDGQKPN
 KLQCCQNL

TRTRPLEQKLISEEDLAANDILDYKDDDDKV

Chromatograms: https://cdn.origene.com/chromatograms/mk6460_b02.zip

Restriction Sites: SgfI-MluI

Cloning Scheme:



ACCN: NM_004218

ORF Size: 654 bp

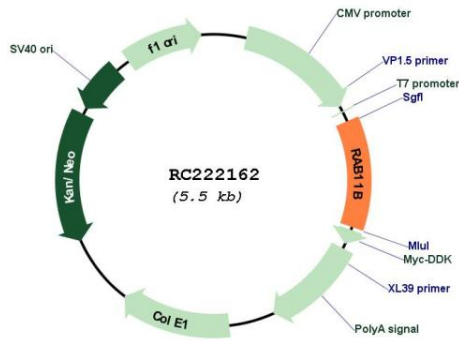
OTI Disclaimer: Due to the inherent nature of this plasmid, standard methods to replicate additional amounts of DNA in *E. coli* are highly likely to result in mutations and/or rearrangements. Therefore, OriGene does not guarantee the capability to replicate this plasmid DNA. Additional amounts of DNA can be purchased from OriGene with batch-specific, full-sequence verification at a reduced cost. Please contact our customer care team at custsupport@origene.com or by calling 301.340.3188 option 3 for pricing and delivery.

The molecular sequence of this clone aligns with the gene accession number as a point of reference only. However, individual transcript sequences of the same gene can differ through naturally occurring variations (e.g. polymorphisms), each with its own valid existence. This clone is substantially in agreement with the reference, but a complete review of all prevailing variants is recommended prior to use. [More info](#)

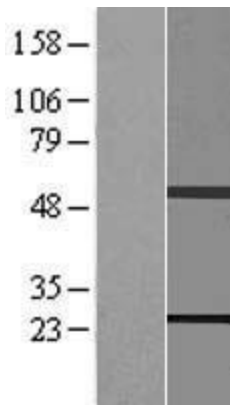
OTI Annotation: This clone was engineered to express the complete ORF with an expression tag. Expression varies depending on the nature of the gene.

Components:	The ORF clone is ion-exchange column purified and shipped in a 2D barcoded Matrix tube containing 10ug of transfection-ready, dried plasmid DNA (reconstitute with 100 ul of water).
Reconstitution Method:	<ol style="list-style-type: none">1. Centrifuge at 5,000xg for 5min.2. Carefully open the tube and add 100ul of sterile water to dissolve the DNA.3. Close the tube and incubate for 10 minutes at room temperature.4. Briefly vortex the tube and then do a quick spin (less than 5000xg) to concentrate the liquid at the bottom.5. Store the suspended plasmid at -20°C. The DNA is stable for at least one year from date of shipping when stored at -20°C.
RefSeq:	<u>NM_004218.4</u>
RefSeq Size:	1635 bp
RefSeq ORF:	657 bp
Locus ID:	9230
UniProt ID:	<u>Q15907</u>
Cytogenetics:	19p13.2
Domains:	ras, RAN, RAS, RHO, RAB
Protein Families:	Druggable Genome
Protein Pathways:	Endocytosis
MW:	24.5 kDa
Gene Summary:	The Ras superfamily of small GTP-binding proteins, which includes the Ras (see MIM 190020), Ral (see MIM 179550), Rho (see MIM 165390), Rap (see MIM 179520), and Rab (see MIM 179508) families, is involved in controlling a diverse set of essential cellular functions. The Rab family, including RAB11B, appears to play a critical role in regulating exocytotic and endocytotic pathways (summary by Zhu et al., 1994 [PubMed 7811277]).[supplied by OMIM, Nov 2010]

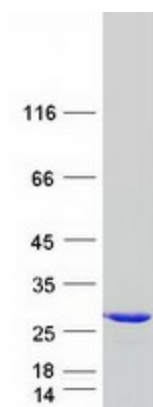
Product images:



Circular map for RC222162



Western blot validation of overexpression lysate (Cat# [LY418145]) using anti-DDK antibody (Cat# [TA50011-100]). Left: Cell lysates from untransfected HEK293T cells; Right: Cell lysates from HEK293T cells transfected with RC222162 using transfection reagent MegaTran 2.0 (Cat# [TT210002]).



Coomassie blue staining of purified RAB11B protein (Cat# [TP322162]). The protein was produced from HEK293T cells transfected with RAB11B cDNA clone (Cat# RC222162) using MegaTran 2.0 (Cat# [TT210002]).