

Product datasheet for **RC222158**

FAM9C (NM_174901) Human Tagged ORF Clone

Product data:

Product Type: Expression Plasmids
Product Name: FAM9C (NM_174901) Human Tagged ORF Clone
Tag: Myc-DDK
Symbol: FAM9C
Synonyms: TEX39C
Mammalian Cell Selection: Neomycin
Vector: pCMV6-Entry (PS100001)
E. coli Selection: Kanamycin (25 ug/mL)
ORF Nucleotide Sequence: >RC222158 ORF sequence
Red=Cloning site Blue=ORF Green=Tags(s)

TTTTGTAATACGACTCACTATAGGGCGGCCGGAATTCGTCGACTGGATCCGGTACCGAGGAGATCTGCC
GCC**CGATCGCC**

ATGGCTGCCAAGGACCAGTTGGAGGTTCAAGTTATGGCCGCCAGGAAATGGAGCTTGCAGGAAAGGATC
CAGTAAGTCATGAGCATGAGGAAAGAAACCTGTTACAGAGACAAAGGAGGGAGATGTAAGTATGAGCA
TGGGGAAAGAGGATCTTTGCTGAAACAGATGAACACACGGGGTTGATACCAAGGAGCTAGAAGATATT
GCAGCTGACATTAAGAGCATCTTCTGCAAGAGAAAAAGGATTGAAAAGATTGCAAAAGCTTGCAGCG
AAATAAAGAACAGAATTAATAATGTTTTGAGAACAACACAATAAAAAGGCAGAAACGTGATTATAGAAT
TTCTCTGAAGTTGCCGAATGTCCTTGAAGAGTTTCATCACAGATGAGCAGAAAGATGAGGAAGGAGATGGA
GAAAAGGAAGAACAATTAATAATTTCAAGAGCAACAAAAGAGGTGGCAACAAGATGGGAAAGGAAGT
AAAGAGAT

ACGCGTACGCGGCCGCTCGAGCAGAAACTCATCTCAGAAGAGGATCTGGCAGCAATGATATCCTGGATT
ACAAGGATGACGACGATAAGGTTTAA

Protein Sequence: >RC222158 protein sequence
Red=Cloning site Green=Tags(s)
MAAKDQLEVQVMAAQEMELAGKDPVSHEHEERKPVTTETKEGDVTDEHGERGSFAETDEHTGVDTKELEDI
AADIKEHLAAKRRIEKIAKACSEIKNRKIKNLRTTQLKRQKRDYRISLKLPNVLEEFITDEQKDEEGDG
EKKEQIKIFQEQQKRWQQDGKGTERRD

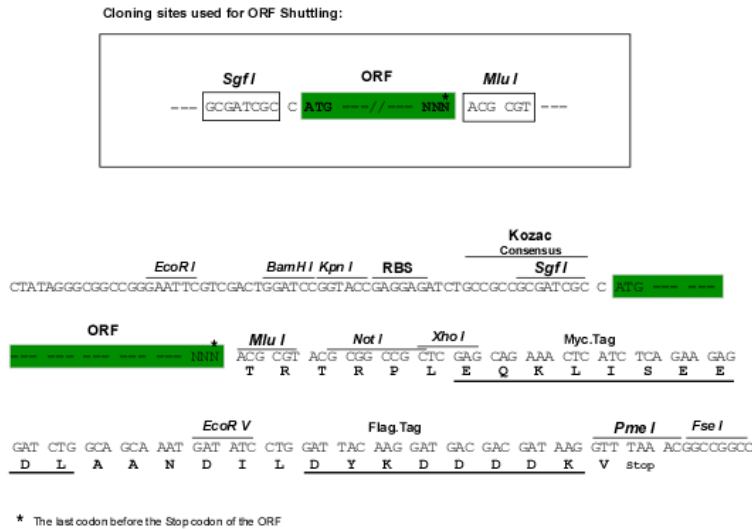
TRTRPLEQKLISEEDLAANDILDYKDDDDKV

Chromatograms: https://cdn.origene.com/chromatograms/mk6472_a04.zip



Restriction Sites: SgfI-MluI

Cloning Scheme:



ACCN: NM_174901

ORF Size: 498 bp

OTI Disclaimer: The molecular sequence of this clone aligns with the gene accession number as a point of reference only. However, individual transcript sequences of the same gene can differ through naturally occurring variations (e.g. polymorphisms), each with its own valid existence. This clone is substantially in agreement with the reference, but a complete review of all prevailing variants is recommended prior to use. [More info](#)

OTI Annotation: This clone was engineered to express the complete ORF with an expression tag. Expression varies depending on the nature of the gene.

Components: The ORF clone is ion-exchange column purified and shipped in a 2D barcoded Matrix tube containing 10ug of transfection-ready, dried plasmid DNA (reconstitute with 100 ul of water).

Reconstitution Method:

1. Centrifuge at 5,000xg for 5min.
2. Carefully open the tube and add 100ul of sterile water to dissolve the DNA.
3. Close the tube and incubate for 10 minutes at room temperature.
4. Briefly vortex the tube and then do a quick spin (less than 5000xg) to concentrate the liquid at the bottom.
5. Store the suspended plasmid at -20°C. The DNA is stable for at least one year from date of shipping when stored at -20°C.

RefSeq: [NM_174901.6](#)

RefSeq Size: 1255 bp

RefSeq ORF: 501 bp

Locus ID: 171484

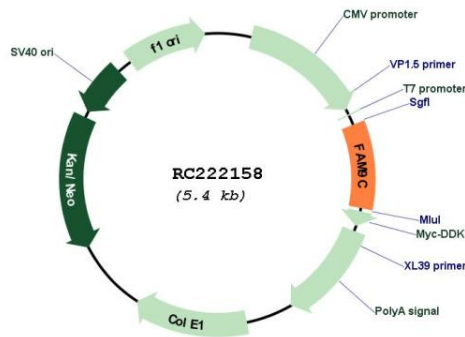
UniProt ID: [Q8IZT9](#)

Cytogenetics: Xp22.2

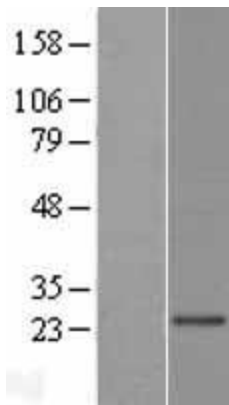
MW: 19.2 kDa

Gene Summary: This gene is a member of a gene family which arose through duplication on the X chromosome. The encoded protein may be localized to the nucleus as the protein contains several nuclear localization signals, and has similarity to a synaptonemal complex protein. [provided by RefSeq, Aug 2011]

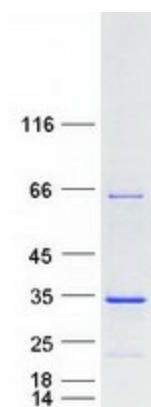
Product images:



Circular map for RC222158



Western blot validation of overexpression lysate (Cat# [LY406386]) using anti-DDK antibody (Cat# [TA50011-100]). Left: Cell lysates from untransfected HEK293T cells; Right: Cell lysates from HEK293T cells transfected with RC222158 using transfection reagent MegaTran 2.0 (Cat# [TT210002]).



Coomassie blue staining of purified FAM9C protein (Cat# [TP322158]). The protein was produced from HEK293T cells transfected with FAM9C cDNA clone (Cat# RC222158) using MegaTran 2.0 (Cat# [TT210002]).