

Product datasheet for **RC222152**

MTUS1 (NM_001001931) Human Tagged ORF Clone

Product data:

Product Type:	Expression Plasmids
Product Name:	MTUS1 (NM_001001931) Human Tagged ORF Clone
Tag:	Myc-DDK
Symbol:	MTUS1
Synonyms:	ATBP; ATIP; ATIP3; ICIS; MP44; MTSG1
Mammalian Cell Selection:	Neomycin
Vector:	pCMV6-Entry (PS100001)
E. coli Selection:	Kanamycin (25 ug/mL)



[View online »](#)

ORF Nucleotide Sequence:

>RC222152 representing NM_001001931
 Red=Cloning site Blue=ORF Green=Tags(s)

TTTTGTAATACGACTCACTATAGGGCGGCCGGAATTCGTCGACTGGATCCGGTACCGAGGAGATCTGCC
 GCC**CGCATCGCC**

ATGACTGTACCAGGAGGATTTTCGCAAGTGTACAGAACTGATATTTCTTCAAAAATCTTTATCAATTCTA
 CACTACCCACCAGGCTGGTTCAGAGAGCACTATGATGCTACCTTATTGACTGCTGGTTCGTGGGATC
 GTACAGCCTTTGTATAATTCCTTTGTTAGCCACGTTTACTGGGAAAAAACTGGTAAATGCCGCTGTCATC
 AAATATGAGGAGAAACCTCCAAAACCAGCATTTTCAAGATGGTTCCTCAGGATCCTTTTATTTGAAGCCTT
 TGGTATCCAGGGCTCATGTTTCACTTGTGAAAACCTCTCCAAAAGGTCCTTCGAGAAAAATTTATTTAC
 AGCTCTTAATGCAGTTGAAAAGAGCAGGCAAAAGAATCCTCGAAGCTTATGTATCCAGCCACAGACAGCT
 CCCGATGCGCTGCCCCCTGAGAAAACACTTGAATTGACGCAATATAAAACAAAATGTGAAAACAAAGTG
 GATTTATCCTGCAGCTCAAGCAGCTTCTTGCCGTGGTAATACCAAGTTTGAAGCATTGACAGTTGTGAT
 TCAGCACCTGCTGTCTGAGCGGGAGGAAGCACTGAAACAACACAAAACCTATCTCAAGAACTTGTAAAC
 CTCGGGGAGAGCTAGTCACTGCTTCAACCACCTGTGAGAAATTAGAAAAAGCCAGGAATGAGTTACAAA
 CAGTGTATGAAGCATTCTCCAGCAGCACCAGGCTGAAAAACAGAACGAGAGAATCGGCTTAAAGAGTT
 TTACACCAGGGAGTATGAAAAGCTTCGGGACACTTACATTGAAGAAGCAGAGAAGTACAAAATGCAATTG
 CAAGAGCAGTTTGACAACCTAAATGCTGCGCATGAAAACCTCTAAGTTGGAATGAAAGCTAGCCACTCAG
 AGAAAATGAAATGCTAAAGAAGGCCTATGAAGCCTCCCTTTAGAAAATTAAGAAAGGCCATGAAATAGA
 AAAGAAATCGCTTGAAGATTTACTTTCTGAGAAGCAGGAATCGCTAGAGAAGCAAATCAATGATCTGAAG
 AGTGAAAAATGATGCTTTAAATGAAAAATGAAATCAGAAGAACAAAAAGAAGAGCAAGAGAAAAAGCAA
 ATTTGAAAAATCCTCAGATCATGTATCTAGAACAGGAGTTAGAAAAGCCTGAAAGCTGTGTTAGAGATCAA
 GAATGAGAAACTGCATCAACAGGACATCAAGTTAATGAAAATGGAGAACTGGTGGACAACAACACAGCA
 TTGGTTGACAAATTGAAGCGTTTCCAGCAGGAGAAATGAAGAATTGAAAAGCTCGGATGGACAAGCAGATGG
 CAATCTCAAGGCAGCTTTCCACGGAGCAGGCTGTTCTGCAAGAGTCGCTGGAGAAGGAGTCGAAAGTCAA
 CAAGCGACTCTCTATGAAAAACGAGGAGCTTCTGTGAAAAGTGCACAATGGGGACCTGTGTAGCCCCAAG
 AGATCCCCACATCCTCCGCCATCCCTTTCAGTACCAAGGAATTCGGGCTCCTTCCCTAGCCCCAGCA
 TTCCACCCAGA

ACGCGTACGCGGCCGCTCGAGCAGAACTCATCTCAGAAGAGGATCTGGCAGCAAATGATATCTGGATT
 ACAAGGATGACGACGATAAGGTTTAA

Protein Sequence:

>RC222152 representing NM_001001931
 Red=Cloning site Green=Tags(s)

MTVPGGFRSCTETDISSKIFINSLTPPAGSERHYDALLTLLVVGYSYSLCIIPLLATFTGKKTGNAAVI
 KYEEKPPKPAFQNGSSGFYKPLVSRHVHLMKTPPKGPSRKNLFTALNAVEKSRQKNPRSLCIQPQTA
 PDALPPEKTLELTQYKTKCENQSGFILQLQLLACGNKFEALTVVIQHLLSEREEALKQHKTLSQELVN
 LRGELVTASTTCEKLEKARNELQTVYEFVQQHQAEKTERENRLEKFTREYKLRDITYIEEAKEYKMQQL
 QEQFDNLNAAHETSKLEIEASHSEKLELLKKAYEASLSEIKKGHEIEKKSLEDLLSEKQESLEKQINDLK
 SENDALNEKLSSEEQRRAREKANLKNPQIMYLEQELSLKAVLEIKNEKLHQDIIKMKMEKLVNNTA
 LVDKLRKFQENEELKARMDKHMAISRQLSTEQAVLQESLEKESKVNKRLSMENEELLWKLHNGDLCSPK
 RSPTSSAIPLQSPRNSGSPSPSISPR

TRTRPLEQKLISEEDLAANDILDYKDDDDKV

Chromatograms:

https://cdn.origene.com/chromatograms/mk8064_f12.zip

Restriction Sites:

Sgfl-MluI

Cloning Scheme:


ACCN: NM_001001931

ORF Size: 1551 bp

OTI Disclaimer: The molecular sequence of this clone aligns with the gene accession number as a point of reference only. However, individual transcript sequences of the same gene can differ through naturally occurring variations (e.g. polymorphisms), each with its own valid existence. This clone is substantially in agreement with the reference, but a complete review of all prevailing variants is recommended prior to use. [More info](#)

OTI Annotation: This clone was engineered to express the complete ORF with an expression tag. Expression varies depending on the nature of the gene.

Components: The ORF clone is ion-exchange column purified and shipped in a 2D barcoded Matrix tube containing 10ug of transfection-ready, dried plasmid DNA (reconstitute with 100 ul of water).

Reconstitution Method:

1. Centrifuge at 5,000xg for 5min.
2. Carefully open the tube and add 100ul of sterile water to dissolve the DNA.
3. Close the tube and incubate for 10 minutes at room temperature.
4. Briefly vortex the tube and then do a quick spin (less than 5000xg) to concentrate the liquid at the bottom.
5. Store the suspended plasmid at -20°C. The DNA is stable for at least one year from date of shipping when stored at -20°C.

RefSeq: [NM_001001931.2](#), [NP_001001931.1](#)

RefSeq Size: 4018 bp

RefSeq ORF: 1554 bp

Locus ID: 57509

UniProt ID: [Q9ULD2](#)

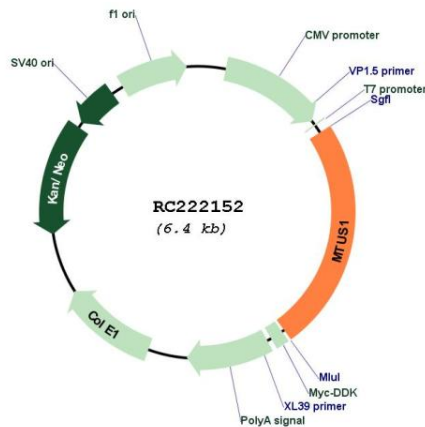
Cytogenetics: 8p22

Protein Families: Druggable Genome, Transcription Factors, Transmembrane

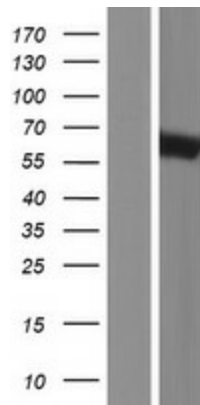
MW: 58.8 kDa

Gene Summary: This gene encodes a protein which contains a C-terminal domain able to interact with the angiotension II (AT2) receptor and a large coiled-coil region allowing dimerization. Multiple alternatively spliced transcript variants encoding different isoforms have been found for this gene. One of the transcript variants has been shown to encode a mitochondrial protein that acts as a tumor suppressor and participates in AT2 signaling pathways. Other variants may encode nuclear or transmembrane proteins but it has not been determined whether they also participate in AT2 signaling pathways. [provided by RefSeq, Jul 2008]

Product images:



Circular map for RC222152



Western blot validation of overexpression lysate (Cat# [LY424280]) using anti-DDK antibody (Cat# [TA50011-100]). Left: Cell lysates from untransfected HEK293T cells; Right: Cell lysates from HEK293T cells transfected with RC222152 using transfection reagent MegaTran 2.0 (Cat# [TT210002]).