

Product datasheet for **RC222150**

CCHCR1 (NM_019052) Human Tagged ORF Clone

Product data:

Product Type:	Expression Plasmids
Product Name:	CCHCR1 (NM_019052) Human Tagged ORF Clone
Tag:	Myc-DDK
Symbol:	CCHCR1
Synonyms:	C6orf18; HCR; pg8; SBP
Mammalian Cell Selection:	Neomycin
Vector:	pCMV6-Entry (PS100001)
E. coli Selection:	Kanamycin (25 ug/mL)



[View online »](#)

ORF Nucleotide Sequence:

>RC222150 representing NM_019052
 Red=Cloning site Blue=ORF Green=Tags(s)

TTTTGTAATACGACTCACTATAGGGCGGCCGGAATTCGTCGACTGGATCCGGTACCGAGGAGATCTGCC
 GCC**CGGATCGCC**

ATGTTTCCACCTTCAGGTTCCACTGGGCTGATTCCCCCTCCCACTTTCAAGCTCGGCCCTTTCAACTC
 TGCAAGAATGGCTCCCACCTGGCTCTCAGACATTCCCCTGGTCCAACCCCAGGCTATCAAGATGTCTC
 AGAGAGCGGGCTAGACACCCAGAGACCTCAAGTACCATGTGGGAACGGGATGTTTCCAGTGACAGGCAG
 GAGCCAGGGCGGAGAGGCAGGTCTGGGGGCTGGAGGGGTACAGGCCCTGAGCCAGCAGGCTGAGGTGA
 TCGTTCGGCAGCTGCAAGAGCTGCGGGGCTGGAGGAGGAGTCCGGCTCTGCGGGAGACCTCGCTGCA
 GCAGAAGATGAGGCTAGAGGCCAGGCCATGGAGCTAGAGGCTCTGGCACGGGCGGAGAAGGCCGGCCGA
 GCTGAGGCTGAGGCCTGCTGTGCTTTGGCTGGGGCTGAGGTTGTCCGGAAGAACTTGAAGAGGGGA
 GCCAGCGGGAGCTGGAAGAGGTTAGAGGCTGCACCAAGAGCAGCTGTCTCTTTGACACAGGCTCACGA
 GGAGGCTCTTTCCAGTTTGACCAAGGCTGAGGGCTTGAGAAGTCTCTGAGTAGTCTGAAACCAGA
 AGAGCAGGGGAAGCAAGGAGCTGGCCGAGGCTCAGAGGAGGCCGAGCTGCTTCGGAAGCAGCTGAGCA
 AGACCCAGGAAGACTTGAGGCTCAGGTGACCCTGGTTGAGAATCTAAGAAAATATGTTGGGGAACAAGT
 CCCTTCTGAGGTCCACAGCCAGACATGGAACTGGAGCGACAGAAGCTTCTGAAACCATGCAGCACTTG
 CAGGAGGACCGGGACAGCCTGCATGCCACCGGGAGCTGCTGCAGGTGCGGGTGCAGAGCCTCACACACA
 TCCTCGCCTGCAGGAGGAGGAGCTGACCAGGAAGGTTCAACCTTCAGATTCCCTGGAGCCTGAGTTTAC
 CAGGAAGTGCCAGTCCCTGCTGAACCGCTGGCGGGAAGGTGTTGCCCTCATGGTGCAGCTAAAGGCC
 CAGGAGCTGGAACACAGTGACTCTGTTAAGCAGCTGAAGGACAGGTGGCCTCACTCCAGGAAAAAGTGA
 CATCCCAGAGCCAGGAGCAGGCCATCCTGCAGCATCCCTGCAGGACAAAGCCGACAGGTTGGAGTGGA
 GGGTATGGGTGCCAAGGGCCTGCAGTTGGAGCTGAGCCGTGCTCAGGAGGCCAGGCGTCAGTGCCAGCAG
 CAGACAGCCTCAGCCGAGGAGCAGCTGAGGCTTGTGGTCAATGCTGTGAGCAGCTCTCAGATCTGGCTCG
 AGACCACCATGGCTAAGGTGGAAGGGGCTGCCGCCAGCTTCCAGCCTCAACAACCCAGCTCAGCTATGC
 TGTCCGAAGGTCCTCACCATTGGGGCCTGATTGCTCGAAAGCTTGCCTTGTCTCAGCTGCGCCAGGAG
 AGCTGTCCCTACCACCACCGGCCACAGATGTGAGCCTTGAGTTGCAGCAGCTGCGGGAAGAACGGAACC
 GCCTGGATGCAGAACTGCAGCTGAGTGCCCGCTCATCCAGCAGGAGGTGGGCCGGGCTCGGGAGCAAGG
 GGAGGCAGAGCGGCAGCAGCTGAGCAAGGTGGCCAGCAGCTGGAGCAGGAGCTGCAGCAGACCCAGGAG
 TCCTTGCTAGCTTGGGGCTGCAGCTGGAGGTAGCACGCCAGGGCCAGCAGGAGACACAGAGGAGGCTG
 CCAGTCTGCGGCAGGAGCTGACCCAGCAGCAGGAACTCTACGGGCAAGCCCTGCAAGAAAAGGTGGCTGA
 AGTGAAACTCGGCTGCGGGAGCAACTCTCAGACACAGAGAGGAGGCTGAACGAGGCTCGGAGGGAGCAT
 GCCAAGGCCGTGGTCTCCTTACGCCAGATTACGCGCAGAGCCGCCAGGAAAAGGAGCGGAGCCAGGAAC
 TCAGGCGTCTGCAGGAGGAGGCCGGAAGGAGGAGGGGACGAGCTGGCCCGGCGCTTGCAGGAGCTAGA
 GAGGGATAAAGAACCTCATGTGGCCACCTTGCAGCAGGAAGGTCTCTCTCCCCTTACAAGCAGCAGCGA
 CTGTTGACAGTTCTTCTTCCCTACTGGATAAGAAGAAATCTGTGGTGTCCAGCCCCAGGCTCCAGAGT
 GTTCAGCATCTGCACCTGTAGCAGCAGCAGTCCCACCAGGAGTCCATAAAAAGGTCCTCTCTGTCTCT
 GCTCGATGACCTGCAGGACCTGAGTGAAGCCATTTCCAAAGAGGAAGCTGTTTGTCAAGGAGACAACCTT
 GACAGATGCTCCAGCTCCAATCCCAGATGAGCAGC

ACGCGTACGCGGCCGCTCGAGCAGAACTCATCTCAGAAGAGGATCTGGCAGCAAATGATATCTGGATT
 ACAAGGATGACGACGATAAGGTTTAA

Protein Sequence: >RC222150 representing NM_019052
Red=Cloning site Green=Tags(s)

MFPPSGSTGLIPPSHFQARPLSTLPRMAPTWLSDIPLVQPPGYQDVSERRLDTQRPQVTMWERDVSSDRQ
EPGRRGRSWGLEGSQALSQQAIVRQLQELRRLEEEVRLRETSLQQMRLEAQAMELEALARA EKAGR
AEAEG LRAALAGAEVVRKNLEEGSQRELEEVQR LHQEQLSSLTQAHEEALSSLT SKAEGLEKSLSSLETR
RAGEAKELAEAQREAE LLRKQLSKTQEDLEAQVTLVENLRKYVGEQVPSEVHSQTWELERQK LLETMQHL
QEDRDSLHATAELLQVRVQSLTHILALQEEELTRKVQPSDSLEPEFTRKCSLLNRWREKVFALMVQLKA
QELEHSDSVKQLKGQVASLQEKVTSQSQEQA ILQRSLQDKAAEVEVERMGAKGLQEL SRAQEARRQWQQ
QTASAEELRLVNAVSSSQIWLETTMAKVEGAAAQLPSLNNRLSYAVRKVLTIRGLIARKLALALRQE
SCPLPPPATDVSLELQQLREERNRLDAELQLSARLIQQEVGRAREQGEAERQQLSKVAQQLEQELQQTQE
SLASLGLQLEVARQGGQESTEEAASLRQELTQQQELYGQALQEKVAEVETRLREQLSDTERRLNEARREH
AKAVVSLRQIQRRAAQEKERSQELRRLQEEARKEEGQRLARRLQELERDKNLMLATLQQEGLLSRYKQQR
LLTVLPSLLDKKKS VVSSPRPECSASAPVAAA VPTRESIKGSLSVLLDDLQDLSEATISKEEAVCQGDNL
DRCSSSNPQMSS

TRTRPLEQKLI SEEDLAANDILDYKDDDDKV

Chromatograms: https://cdn.origene.com/chromatograms/mk6780_a06.zip

Restriction Sites: Sgfl-Mlul

Cloning Scheme:


ACCN: NM_019052

ORF Size: 2346 bp

OTI Disclaimer: The molecular sequence of this clone aligns with the gene accession number as a point of reference only. However, individual transcript sequences of the same gene can differ through naturally occurring variations (e.g. polymorphisms), each with its own valid existence. This clone is substantially in agreement with the reference, but a complete review of all prevailing variants is recommended prior to use. [More info](#)

OTI Annotation: This clone was engineered to express the complete ORF with an expression tag. Expression varies depending on the nature of the gene.

Components: The ORF clone is ion-exchange column purified and shipped in a 2D barcoded Matrix tube containing 10ug of transfection-ready, dried plasmid DNA (reconstitute with 100 ul of water).

Reconstitution Method:

1. Centrifuge at 5,000xg for 5min.
2. Carefully open the tube and add 100ul of sterile water to dissolve the DNA.
3. Close the tube and incubate for 10 minutes at room temperature.
4. Briefly vortex the tube and then do a quick spin (less than 5000xg) to concentrate the liquid at the bottom.
5. Store the suspended plasmid at -20°C. The DNA is stable for at least one year from date of shipping when stored at -20°C.

RefSeq: [NM_019052.2](#), [NP_061925.1](#)

RefSeq Size: 2972 bp

RefSeq ORF: 2349 bp

Locus ID: 54535

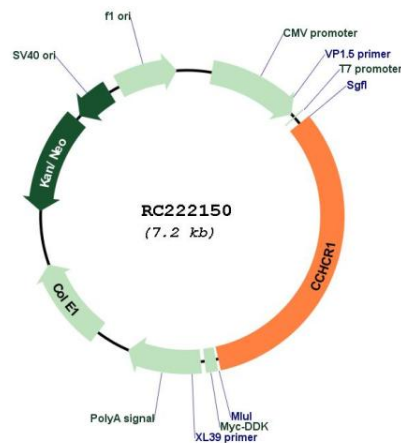
UniProt ID: [Q8TD31](#)

Cytogenetics: 6p21.33

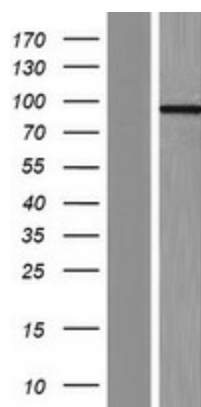
MW: 88.5 kDa

Gene Summary: This gene encodes a protein with five coiled-coil alpha-helical rod domains that is thought to act as a regulator of mRNA metabolism through its interaction with mRNA-decapping protein 4. It localizes to P-bodies, the site of mRNA metabolism, with an N-terminus that is required for this subcellular localization, suggesting it is a P-body component. Naturally occurring mutations in this gene are associated with psoriasis. [provided by RefSeq, May 2017]

Product images:



Circular map for RC222150



Western blot validation of overexpression lysate (Cat# [LY412791]) using anti-DDK antibody (Cat# [TA50011-100]). Left: Cell lysates from untransfected HEK293T cells; Right: Cell lysates from HEK293T cells transfected with RC222150 using transfection reagent MegaTran 2.0 (Cat# [TT210002]).