

Product datasheet for RC222149

IL18BP (NM_001039660) Human Tagged ORF Clone

Product data:

Product Type: Expression Plasmids
Product Name: IL18BP (NM_001039660) Human Tagged ORF Clone
Tag: Myc-DDK
Symbol: IL18BP
Synonyms: FVH; IL18BPa
Mammalian Cell Selection: Neomycin
Vector: pCMV6-Entry (PS100001)
E. coli Selection: Kanamycin (25 ug/mL)
ORF Nucleotide Sequence: >RC222149 ORF sequence
 Red=Cloning site Blue=ORF Green=Tags(s)

TTTTGTAATACGACTCACTATAGGGCGGCCGGAATTCGTCGACTGGATCCGGTACCGAGGAGATCTGCC
 GCC**CGATCGCC**

ATGACCATGAGACACAACCTGGACACCAGACCTCAGCCCTTTGTGGGTCTGCTCCTGTGTGCCACGTCG
 TCACTCTCCTGGTCAGAGCCACACCTGTCTCGCAGACCACCACAGCTGCCACTGCCTCAGTTAGAAGCAC
 AAAGGACCCCTGCCCTCCAGCCCCAGTGTTCCAGCAGCTAAGCAGTGTCCAGCATTGGAAGTGACC
 TGGCCAGAGGTGGAAGTGCCACTGAATGGAACGCTGAGCTTATCCTGTGTGGCCTGCAGCCGCTTCCCCA
 ACTTCAGCATCCTCTACTGGCTGGGCAATGGTTCCTTCATTGAGCACCTCCAGGCCGACTGTGGGAGGG
 GAGCACCAGCCGGAACGTGGGAGCACAGGTACGACGCTGTGCAAGGCCTTGGTGTGGAGCAGCTGACC
 CCTGCCCTGCACAGCACTTCTCCTGTGTGCTCGTGGACCCTGAACAGGTTGTCCAGCGTCACGTGCG
 TCCTGGCCAGCTCTGGGCTGGGCTGAGGGCAACCTTGCCCCCACCAAGAAGCCCTGCCTCCAGCCA
 CAGCAGTCCACAGCAGCAGGGT

ACGCGTACGCGGCCGCTCGAGCAGAACTCATCTCAGAAGAGGATCTGGCAGCAAATGATATCCTGGATT
 ACAAGGATGACGACGATAAGGTTTAA

Protein Sequence: >RC222149 protein sequence
 Red=Cloning site Green=Tags(s)

MTMRHNWTPDLSPLWVLLLCAHVVTLLVRATPVSQTTAATASVRSTKDPSPQPPVFAAKQCPALEVT
 WPEVEVPLNGTSLSCVACSRFPNFSILYWLNGSFIHLPGRLEWEGSTSRERGSTGTQLCKALVLEQLT
 PALHSTNFSCVLVDPEQVVQRHVVLAQLWAGLRATLPPTQEALPSSHSSPQQQG

TRTRPLEQKLISEEDLAANDILDYKDDDDKV



Chromatograms: https://cdn.origene.com/chromatograms/mk6089_c10.zip

Restriction Sites: SgfI-MluI

Cloning Scheme:



ACCN: NM_001039660

ORF Size: 582 bp

OTI Disclaimer: The molecular sequence of this clone aligns with the gene accession number as a point of reference only. However, individual transcript sequences of the same gene can differ through naturally occurring variations (e.g. polymorphisms), each with its own valid existence. This clone is substantially in agreement with the reference, but a complete review of all prevailing variants is recommended prior to use. [More info](#)

OTI Annotation: This clone was engineered to express the complete ORF with an expression tag. Expression varies depending on the nature of the gene.

Components: The ORF clone is ion-exchange column purified and shipped in a 2D barcoded Matrix tube containing 10ug of transfection-ready, dried plasmid DNA (reconstitute with 100 ul of water).

Reconstitution Method:

1. Centrifuge at 5,000xg for 5min.
2. Carefully open the tube and add 100ul of sterile water to dissolve the DNA.
3. Close the tube and incubate for 10 minutes at room temperature.
4. Briefly vortex the tube and then do a quick spin (less than 5000xg) to concentrate the liquid at the bottom.
5. Store the suspended plasmid at -20°C. The DNA is stable for at least one year from date of shipping when stored at -20°C.

RefSeq: [NM_001039660.2](#)

RefSeq Size: 1433 bp

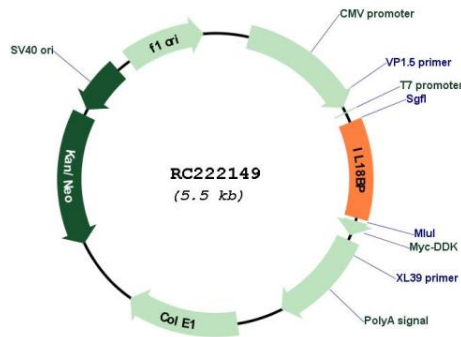
RefSeq ORF: 585 bp

Locus ID: 10068

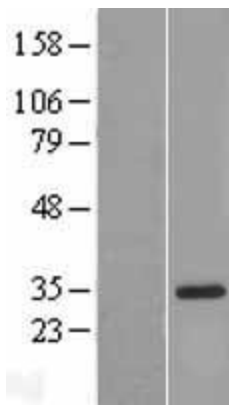
UniProt ID: [O95998](#)
Cytogenetics: 11q13.4
Protein Families: Druggable Genome, Secreted Protein
MW: 21.1 kDa

Gene Summary: The protein encoded by this gene functions as an inhibitor of the proinflammatory cytokine, IL18. It binds IL18, prevents the binding of IL18 to its receptor, and thus inhibits IL18-induced IFN-gamma production, resulting in reduced T-helper type 1 immune responses. This protein is constitutively expressed and secreted in mononuclear cells. Elevated level of this protein is detected in the intestinal tissues of patients with Crohn's disease. Alternatively spliced transcript variants encoding different isoforms have been described for this gene. [provided by RefSeq, Feb 2011]

Product images:



Circular map for RC222149



Western blot validation of overexpression lysate (Cat# [LY428669]) using anti-DDK antibody (Cat# [TA50011-100]). Left: Cell lysates from untransfected HEK293T cells; Right: Cell lysates from HEK293T cells transfected with [RC222149] using transfection reagent MegaTran 2.0 (Cat# [TT210002]).