

Product datasheet for **RC222147**

TBC1D12 (NM_015188) Human Tagged ORF Clone

Product data:

| | |
|---------------------------|--|
| Product Type: | Expression Plasmids |
| Product Name: | TBC1D12 (NM_015188) Human Tagged ORF Clone |
| Tag: | Myc-DDK |
| Symbol: | TBC1D12 |
| Mammalian Cell Selection: | Neomycin |
| Vector: | pCMV6-Entry (PS100001) |
| E. coli Selection: | Kanamycin (25 ug/mL) |



[View online »](#)

ORF Nucleotide Sequence:

>RC222147 representing NM_015188
 Red=Cloning site Blue=ORF Green=Tags(s)

TTTTGTAATACGACTCACTATAGGGCGGCCGGGAATTCGTCGACTGGATCCGGTACCGAGGAGATCTGCC
 GCC**CGCATCGCC**

ATGGTGGGTCCGGAGGATGCCGGAGCCTGCTCGGGAAGAAACCCCAAGTTGCTCCCGGTGCCTGCGCCGG
 ACCCCGTGGGCCAGGACAGGAAGTAATCCGGGCCACGGGCGGCTTTGGCGGAGGCGTCGGCGCTGTGGA
 GCCCGCGAGGAGGCTGACGAGGAGGAGGCTGACGAGGAGGAGAGACGCCCGCTCGGCAGCTCCTT
 CAGCGTTACCTCGCGCGGCCGGGGAGCAGCTGGAGCCGGGGCTCTGCTACTGTCCGCTCCCGCTGGCC
 AGGCCGGCGCCCGCCGCTCGGCAGCCACGATCGGACGCCTGCCTGCTGGGCTCGGCTCCAAACA
 CCGCGCGCGGAGGTGGCTGATGGCCGCGCGCCGCGCACGAAGGCATGACCAACGGCGACTCGGTTTTT
 CTGCCGGCCGGGACTGTGCGATCTGGAAGAGGCTCGCGGGCTGGCGCGCGCCGGCGCGGGAGTCGC
 GCCCGCCGCCCTACGGCCGCTTGCCTGGAGGGCTGGCGACGAGACCGGACGGCGCGGGAAG
 CCCGTCCGATTGGCCTCTCGCTTGGAGACCCGCTGCGGAGCTGCTGCCTGGTGGCCGCGGACGCCAG
 GAGCCCGAGGGCGCGGACGACTCGGGGACAGCCCGCCAGCAGCTGCAAGCAGTAGCGAGGACTCAG
 AGCAGCGGGGAGTCGGCGCCGGGGTCCGAGGAGGGCGCGCCCTGCCACCTCGGCCGAGAGGACTAA
 TGGGGGTGCGGAGCCGCGCTGGGCTTTCTGACATTCACCTCAACTCTCGCAACACGTTCCAGGTGAGC
 CGCGGTGAGAGCGCCCGCATCACTGCCCGCGGGGCGCGGTCGCTTGCCTTGCCTGCGCGGAGCAGG
 GTCCTGCGGGGGCTTCGGCCGGGCTCGACGGAGTGGCGGCTTCGCGGACTTCTTACCAGAAACTTTTT
 TCCAAAAGGACAAAGAACTCAATCAGTTGTCCATAGTGCTCCTGGTTGAAATATTTGGTAAAGTC
 CCTCCTAGAGAGAATCTCAGAAAACATCAAAATCATTACAGCAGGAATATGAAGCACGAACGGGGAGGA
 CCTGTAACCACACCTCAGTCTTCAAGACGCAAGAATTTGAATTTGAGCCGCTTCTACCACGCCTT
 GATTCTTGAGGATCGACCATCAAATCTTCTGCCAAATCTGTGGAAGAAGCTTTACGTACCCGACAAGAA
 TACGATGAGATGGTGGCTGAGGCTAAAAACGAGAAATTAAGGAAGCACATAAAAGAAAAAAGAAATCATGA
 AAGAACGATTTAAGCAGGAAGAAAATATTGCAAGTGCAATGGTAATTTGGATCAATGAAATACTGCCAA
 TTGGGAAGTAATGCGTAGTACAAGAAGAGTTCGAGAATTGGTGGCAGGGATTGCCCTAGTGTCCGT
 GGGAAAGTTGGAGTCTAGCTGTAGGAAATGAACTAAATCACTCCTGAACTTTATGAAATCTTCTCT
 CAAGAGCAAAAGAACGGTGGAAAAGTTTCAAGTAAACAAGTTCAGAGAATGATACAGAAGGTGTATCTGT
 TGCTGATCGAGAGCCAGTCTGGAATTAATTAAGTTGGACATATCCCGTACATTTCCATCTCTACATC
 TTTCAGAAGGGTGGTCCATATCATGATGCTTGCATAGTATTTTAGGGGCATACATGCTACAGGCCTG
 ATGTTGGTTATGTCCAAGGGATGCTTCAATTGCAGCAGTACTCATTCTCAATTTGGAAGAGGCAGATGC
 CTTTATCGCATTTGCCAATCTCCTGAATAAGCCATGCCAGTTGGCCTTTTTTCGTGTGGATCACAGCATG
 ATGTTGAAATATTTGCAACATTTGAAGTATTCTTTGAAGAAAATCTTTCCAAATATTTCTTCACTTCA
 AATCTTACAGTCTTACACCAGATATATACTTGATAGACTGGATCTTACACTATATAGCAAACTACTACC
 ACTTGATCTGGCCTGTCGAGTCTGGGATGATTTTGCAGAGATGGGGAAGAATTTTTATTTAGGACTGGA
 TTAGGAATCCTCCGATTATGAAGATATTCTCCTGCAGATGGACTTTATTCATATAGCACAGTTTCTAA
 CTAATTTGCCAGAAGATATCACATCGGAAAAGCTGTTCAAGTTGATTGCAGCCATTAGATGCAGAATAG
 CACCAAAAAATGGACTCAGGTCTTGCATCTGTAATGAAGGATATTAAGAAGGAGACAAGAACAGTAGT
 CTGCTTTGAAAAGC

ACGCGTACGCGGCCGCTCGAGCAGAAACTCATCTCAGAAGAGGATCTGGCAGCAATGATATCCTGGATT
 ACAAGGATGACGACGATAAGGTTTAA

Protein Sequence: >RC222147 representing NM_015188
Red=Cloning site Green=Tags(s)

MVGPEDAGACSGRNPKLLPVPAPDPVGGQDRKVIKATGGFGGGAVGAVEPPEEADDEEEADEEEETPPRQLL
QRYLAAAGEQLEPGLCYCLPAGQAGAPPPSAAPRSDACLLGSGSKHRGAEVADGRAPRHEGMTNGDSGF
LPGRDCRDLEEARGLARAGGRESRRRRPYGRLRLEGPGEDEDAGAGSPSDWASPLEDPLRSCCLVAADAQ
EPEGAGSDSGDSPASSCSSESEQRGVGAGGPEEGAPPATSAERTNGGAEPRLGFSDIHFNSRNTFQVS
RGQSARDHLPPAGPPVPLPAAEQGPAGASARARRSGGFADFFTRNLFPKRTKELKSVVHSAPGWKLFQKV
PPRENLQKTSKIIQQEYEARTGRTCKPPQSSRRKNFEFEPLSTTALILED RPSNLPAKSVVEALRHRQE
YDEMVAEAKKREIKEAHRKRIMKERFKQEENIASAMVIWINEILPNWEVMRSTRRVRELWWQGLPPSVR
GKVWSLAVGNELNITPELIEIFLSRAKERWKSFSSETSENDETEGVSADREASLELIKLDISRTPPSLYI
FQKGGPYHDVLSILGAYTCYRPDVGYYVQGMFIAAVLILNLEEADAFIAFANLLNKPCQLAFFRVDHSM
MLKYFATFEVFFEEENLSKLFHFYSYSLTPDIYLIDWIFTLYSKSLPLDLACRVWDVFCRDGEEFLFRTG
LGILRLYEDILLQMDFIHIAQFLTKLPEDITSEKLFSCIAAIQMNSTKKWTQVFASVMKDIKEGDKNSS
PALKS

TRTRPLEQKLISEEDLAANDILDYKDDDDKV

Chromatograms: https://cdn.origene.com/chromatograms/mk8039_d06.zip

Restriction Sites: Sgfl-Mlul

Reconstitution Method:

1. Centrifuge at 5,000xg for 5min.
2. Carefully open the tube and add 100ul of sterile water to dissolve the DNA.
3. Close the tube and incubate for 10 minutes at room temperature.
4. Briefly vortex the tube and then do a quick spin (less than 5000xg) to concentrate the liquid at the bottom.
5. Store the suspended plasmid at -20°C. The DNA is stable for at least one year from date of shipping when stored at -20°C.

RefSeq: [NM_015188.2](#)

RefSeq Size: 5749 bp

RefSeq ORF: 2328 bp

Locus ID: 23232

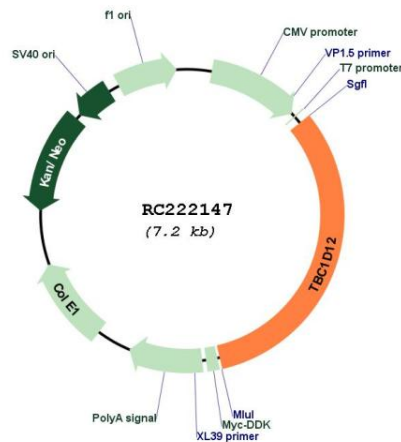
UniProt ID: [O60347](#)

Cytogenetics: 10q23.33

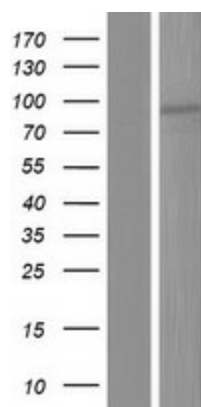
MW: 85.4 kDa

Gene Summary: May act as a GTPase-activating protein for Rab family protein(s).[UniProtKB/Swiss-Prot Function]

Product images:



Circular map for RC222147



Western blot validation of overexpression lysate (Cat# [LY414686]) using anti-DDK antibody (Cat# [TA50011-100]). Left: Cell lysates from untransfected HEK293T cells; Right: Cell lysates from HEK293T cells transfected with RC222147 using transfection reagent MegaTran 2.0 (Cat# [TT210002]).