

Product datasheet for RC222139

KRTAP10-1 (NM_198691) Human Tagged ORF Clone

Product data:

Product Type:	Expression Plasmids
Product Name:	KRTAP10-1 (NM_198691) Human Tagged ORF Clone
Tag:	Myc-DDK
Symbol:	KRTAP10-1
Synonyms:	KAP10.1; KAP18-1; KAP18.1; KRTAP10.1; KRTAP18-1; KRTAP18.1
Mammalian Cell Selection:	Neomycin
Vector:	pCMV6-Entry (PS100001)
E. coli Selection:	Kanamycin (25 ug/mL)
ORF Nucleotide Sequence:	>RC222139 ORF sequence Red=Cloning site Blue=ORF Green=Tags(s)

TTTTGTAATACGACTCACTATAGGGCGCCGGGAATTCGTCGACTGGATCCGGTACCGAGGAGATCTGCC
GCC**CGATCGCC**

ATGACCGCTCCACCATGTCCGCTGCTCCAGCGCTTGCTCCGACTCCTGGCAGGTGGATGCCTGCCAG
AGAGCTGCTGTGAGCCCCACTGCTGCGCCCTCAGCTGCTGCGCCCTGGCCCCCTGCCTGACCCTGGTCTG
CACCCAGTGAGCCGTGTGCCAGCCCTGCTGCCAGGCAGCCTGTGAGCCAGCCCTGCCAATCAGGC
TGCACCAGCTCCTGCACGCCCTCGTGTGCCAGCAGTCTAGCTGCCAGCCGGCTTGCTGCACCTCCTCCC
CCTGCCAGCAGGCTGCTGCATGCCCGTCTGCTGCAAGCCTGTGTGCTGCCTGCCACCTGCTCTAAGGA
TTCTCTTCATGCTGCCAGCAGTCTAGCTGCCAGCCAATTGCTGTGCCTCTTCTCCAGCCAGCAGTCC
TGCTGTGTGCCTGTTTGCTGCAAGCCTGTGTGCTATGTGCCACCTGCTCTGAGTCATCCTTTCATGCT
GCCAGCAGTCTAGCTGCCATCCAGCTTGCTGCACCTCCTCCCCCTGCCAGCAGGCTGCTGCGTGCCCGT
CCGTTGCAAGCCTGTCTGCTGCAAGCCATCTGCTGTGTGCCCGTCTGCTCTGGGGCTTCCACTTCATGC
TGCCAGCAGTCTAGCTGTGAGCCGGCTTGCTGCACCACCTCCTGCTGCAGACCCTCCTCCTCCGTGCC
TCCTCTGCCGCCCTGTATGCCAGCCCGCTGCTGTATGCCTGTCTCCTCTGCTGTGCCCTGCCTCCTC
CTGCCAGGCCAGCTGCTGCCCGCCGCTCCTGCTGTCCCTCCTCTGCCGCCCGCGTGTCTCCCGCTG
GCCTGC

ACGCGTACGCGGCCGCTCGAGCAGAACTCATCTCAGAAGAGGATCTGGCAGCAAATGATATCCTGGATT
ACAAGGATGACGACGATAAGGTTAA



[View online »](#)

Protein Sequence: >RC222139 protein sequence
Red=Cloning site Green=Tags(s)

MTASTMSVCSSACSDSWQVDACPESCCPEHCCALSCCALAPCLTLVCTPVSrvSSPCCQAACEPSPCQSG
 CTSSCTPSCCQQSSCQPACCTSSPCQQACMPVCKPVCLPTCSKSSSCCQQSSCQPTCCASSSSQQS
 CCVPVCKPVICYPTCSESSSSCCQSSCHPACCTSSPCQQACVPVCKPVCKPICCVPVCSGASTSC
 CQQSSCQPACCTTSCCRPSSSVLLCRPVCQPACMPVSSCCAPASSCQASCCRPASCVLLCRPACSRL
 AC

TRTRPLEQKLISEEDLAANDILDYKDDDDKV

Chromatograms: https://cdn.origene.com/chromatograms/mk6563_b09.zip

Restriction Sites: SgfI-MluI

Cloning Scheme:



ACCN: NM_198691

ORF Size: 846 bp

OTI Disclaimer: The molecular sequence of this clone aligns with the gene accession number as a point of reference only. However, individual transcript sequences of the same gene can differ through naturally occurring variations (e.g. polymorphisms), each with its own valid existence. This clone is substantially in agreement with the reference, but a complete review of all prevailing variants is recommended prior to use. [More info](#)

OTI Annotation: This clone was engineered to express the complete ORF with an expression tag. Expression varies depending on the nature of the gene.

Components: The ORF clone is ion-exchange column purified and shipped in a 2D barcoded Matrix tube containing 10ug of transfection-ready, dried plasmid DNA (reconstitute with 100 ul of water).

Reconstitution Method:

1. Centrifuge at 5,000xg for 5min.
2. Carefully open the tube and add 100ul of sterile water to dissolve the DNA.
3. Close the tube and incubate for 10 minutes at room temperature.
4. Briefly vortex the tube and then do a quick spin (less than 5000xg) to concentrate the liquid at the bottom.
5. Store the suspended plasmid at -20°C. The DNA is stable for at least one year from date of shipping when stored at -20°C.

RefSeq: [NM_198691.3](#)

RefSeq Size: 1011 bp

RefSeq ORF: 849 bp

Locus ID: 386677

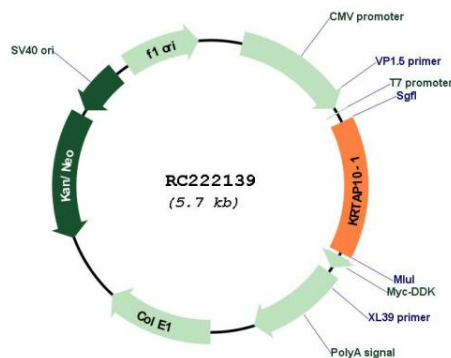
UniProt ID: [P60331](#)

Cytogenetics: 21q22.3

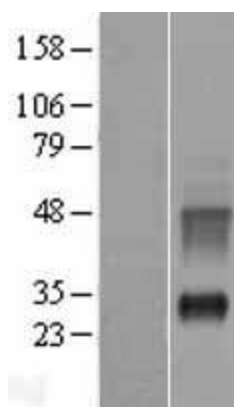
MW: 28.7 kDa

Gene Summary: This gene encodes a member of the keratin-associated protein (KAP) family. The KAP proteins form a matrix of keratin intermediate filaments which contribute to the structure of hair fibers. KAP family members appear to have unique, family-specific amino- and carboxyl-terminal regions and are subdivided into three multi-gene families according to amino acid composition: the high sulfur, the ultrahigh sulfur, and the high tyrosine/glycine KAPs. This gene encodes a member of the high sulfur KAP family. It is localized to a cluster of intronless KAPs at 21q22.3 which are located within the introns of the C21orf29 gene. [provided by RefSeq, Jul 2008]

Product images:



Circular map for RC222139



Western blot validation of overexpression lysate (Cat# [LY404810]) using anti-DDK antibody (Cat# [TA50011-100]). Left: Cell lysates from untransfected HEK293T cells; Right: Cell lysates from HEK293T cells transfected with RC222139 using transfection reagent MegaTran 2.0 (Cat# [TT210002]).