

Product datasheet for **RC222137**

PGPEP1L (NM_001102612) Human Tagged ORF Clone

Product data:

Product Type: Expression Plasmids
Product Name: PGPEP1L (NM_001102612) Human Tagged ORF Clone
Tag: Myc-DDK
Symbol: PGPEP1L
Mammalian Cell Selection: Neomycin
Vector: pCMV6-Entry (PS100001)
E. coli Selection: Kanamycin (25 ug/mL)
ORF Nucleotide Sequence: >RC222137 representing NM_001102612
 Red=Cloning site Blue=ORF Green=Tags(s)

TTTTGTAATACGACTCACTATAGGGCGGCCGGAATTCGTCGACTGGATCCGGTACCGAGGAGATCTGCC
 GCC**CGATCGCC**

ATGAAGCCGGGACTCTCGTGGAGCTCTCCAAGCTGGCCTGGGGAATGAAACAGTGGTGCAGCTGCGGA
 CTCTGGAGCTGCCTGTAGATTACAGGGAGGCTAAGCGGAGGGTACCCGGAATCTGGGAAGATCATCAGCC
 GCAACTCGTCGTGCATGTGGCATGGACACCGCCGCAAGGCGATCATTCTGGAACAGTCTGGCAAGAAC
 CAAGGCTACCGGGACGCCGACATCCGCAGCTTCTGGCCCGAGGGCGCGTGTGCCCTACCTGGCAGCCAG
 ACGTGCTGGAGTCAGGGGTCTGCATGAAGGCAGTCTGCAAGCGGTAGCTGTGGAGGGTGTCCAGCTGAT
 CTTTTCCGAGATGCAGGCAGATACGTCTGTGATTATACCTATTACCTGTCTCTGCATCATGAAAAGGGC
 TGC GCGCACTCATCCATGTCCCTCCACTATCGCGCGGGCTCCCGCCAGCCTGTGGAAGAGCCTTGA
 GAGTCATCATCCAGAAATGCTGGAAGAGGTGGGAAAGCCCAAGCACAGAGCCAGTTCCAGAAAACTC
 AACCATGGTCCTTCCAGCCAAAGGGAAC

ACGCGTACGCGGCCGCTCGAGCAGAAACTCATCTCAGAAGAGGATCTGGCAGCAATGATATCCTGGATT
 ACAAGGATGACGACGATAAGGTTTAA

Protein Sequence: >RC222137 representing NM_001102612
 Red=Cloning site Green=Tags(s)

MKPRTLVELSKLGLGNETVVQLRTLLELPVDYREAKRRVTGIWEDHQPLVHVGMDDTAAKIILEQSGKN
 QGYRDADIRSFWPEGVCLPGSPDVLESGVCMKAVCKRVAVEGVDVIFSRDAGRYVCDYTYL SLHHGK
 CAALIHVPPLSRGLPASLLGRALRVIIQEMLEEVGKPKHRAQFEENSTMVLPKGN

TRTRPLEQKLISEEDLAANDILDYKDDDDKV

Chromatograms: https://cdn.origene.com/chromatograms/mk8039_e10.zip



[View online »](#)

Restriction Sites: SgfI-MluI

Cloning Scheme:



ACCN: NM_001102612

ORF Size: 588 bp

OTI Disclaimer: The molecular sequence of this clone aligns with the gene accession number as a point of reference only. However, individual transcript sequences of the same gene can differ through naturally occurring variations (e.g. polymorphisms), each with its own valid existence. This clone is substantially in agreement with the reference, but a complete review of all prevailing variants is recommended prior to use. [More info](#)

OTI Annotation: This clone was engineered to express the complete ORF with an expression tag. Expression varies depending on the nature of the gene.

Components: The ORF clone is ion-exchange column purified and shipped in a 2D barcoded Matrix tube containing 10ug of transfection-ready, dried plasmid DNA (reconstitute with 100 ul of water).

- Reconstitution Method:
1. Centrifuge at 5,000xg for 5min.
 2. Carefully open the tube and add 100ul of sterile water to dissolve the DNA.
 3. Close the tube and incubate for 10 minutes at room temperature.
 4. Briefly vortex the tube and then do a quick spin (less than 5000xg) to concentrate the liquid at the bottom.
 5. Store the suspended plasmid at -20°C. The DNA is stable for at least one year from date of shipping when stored at -20°C.

RefSeq: [NM_001102612.2](#), [NP_001096082.2](#)

RefSeq Size: 995 bp

RefSeq ORF: 591 bp

Locus ID: 145814

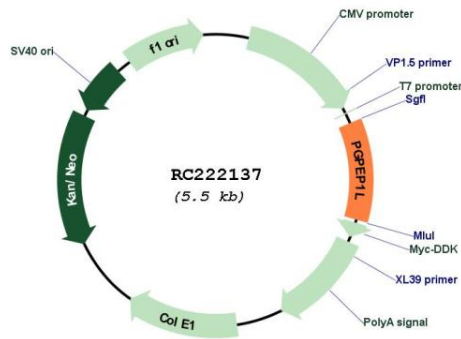
UniProt ID: [A6NFU8](#)

Cytogenetics: 15q26.3

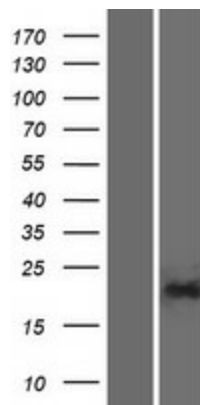
Protein Families: Druggable Genome

MW: 21.5 kDa

Product images:



Circular map for RC222137



Western blot validation of overexpression lysate (Cat# [LY420177]) using anti-DDK antibody (Cat# [TA50011-100]). Left: Cell lysates from untransfected HEK293T cells; Right: Cell lysates from HEK293T cells transfected with RC222137 using transfection reagent MegaTran 2.0 (Cat# [TT210002]).