

Product datasheet for RC222136

SIPA1L2 (NM_020808) Human Tagged ORF Clone

Product data:

Product Type:	Expression Plasmids
Product Name:	SIPA1L2 (NM_020808) Human Tagged ORF Clone
Tag:	Myc-DDK
Symbol:	SIPA1L2
Synonyms:	SPAL2; SPAR2
Mammalian Cell Selection:	Neomycin
Vector:	pCMV6-Entry (PS100001)
E. coli Selection:	Kanamycin (25 ug/mL)
ORF Nucleotide Sequence:	>RC222136 representing NM_020808 Red=Cloning site Blue=ORF Green=Tags(s)

TTTTGTAATACGACTCACTATAGGGCGGCCGGAATTCGTCGACTGGATCCGGTACCGAGGAGATCTGCC
GCC**CGATCGCC**

ATGAGTGACCCAAGGCAGTCACAAGAAGAGAAGCACAAGCTAGGCAGAGCCTCTTCAAAGTTCAAGGATC
CCCCTAGAATCATGCAGTCAGATGATTATTTTGTCTCGAAATTTAAAGCCATTATGGCAACATGGGACC
CACTACTTCTTTAAATGCCTCGAATTCGAATGAGACTGGCGGTGGTGGTCCGGCTAATGGTACCCAGCT
GTGCCCAAGATGGGTGTGAGAGCAAGGGTGTCTGAATGGCCTCTAAAAAGGACTGTTCCAAGGAGCTAA
CATGCAAGGCACCTGTGGGAAAGCCGGTCTCAGACCAGTTATGAAAGCATCACTTCTGTCTCGCAATGG
GCAGAGTGACCAGAGTGAAGGTCAGCAAGATGAACAGCTCGATCTGGACTTCGTGGAGGCCAAGTACACA
ATCGGAGACATCTTTGTCCATTCACCCCAAGAGGACTTCACCCATAAGACAGAGGAGCAATAGTGATG
TCACTATCAGTGACATTGATGCCAAGATGTCTTAGACCAAAATGCAGTCAACCCCAACACCCGGGCTGC
CCTGCACAGGGGATGGAAGTACTTCATCCATCGACAGGCAAGGCTTATCTGGTGAAAACCTTTTTTGTCT
ATGCTCAGAGGGTACCGAGTAGAAAATATGACCACAAAGCAATGGTCCCTTTGGGTCCCTGAATTTT
TCCGCTGTGACCTGCAATCTCTCCGAGCCTTCATGCAGCAGCACAGATTCTAGGGGAGAATTTGTCCG
CATCTCAGGATTAGATTATGTGGACAGTGCCTCCTGATGGGGAGAGACAGGACAAGCCTTTCAAACGG
AGGTTGAAATCAGAGTCGGTGGAAACATCTCTTCCGAAAGCTTCGAACTGTTAAAAGTGAGCACGAAA
CTTTCAAGTTACAGTCTGAGCTGGAGGAGAGCCGACTGGAGAGGGGCATTGCGCCCTTGAATTGTGAGCG
ATGTTTTGCACATTATGATGTCCAGAGCATTTTGTTTAATATCAACGAAGCCATGGCTACGAGGGCTAAT
GTGGGGAAAAGGAAAACATAACCACTGGGGCATCTGCAGCATCCAGACTCAGATGCCTACGGGCCAGA
CAGGCAACTGTGAGTCCCCTTTAGGGAGCAAGGAGGACCTCAACTCCAAAGAGAACCTGGATGCCGATGA
GGGTGATGGGAAAAGTAACGACCTCGTCTTAGTTGTCTTACTTTAGAAATGAGACTGGAGGGGAAGGC
GACAGGCGGATTGCGCTCTCTCGAGCCAACCTATCCTCTTTCAGTTCTGGGAAAGCTGCTCTTTGCAAT
CGTCACTCAGCTCTCACTGCACAAATGCAGGTGTCTCCGTCTTGAAGTGCCAGAGAAAACCAGCCTAT
TCACAGGGAGAAAAGTGAAGCGCTACATCATAGAACACATTGACCTTGGGGCTATTATTACCGCAAATTC



[View online >](#)

TTCTATGGGAAAGAGCACCAAACTACTTTGGAATAGATGAAAACCTTGGTCCAGTAGCAGTCAGCATCC
GGAGAGAGAAGGTGGAAGATGCCAAGGAGAAAGAAGGATCCCAGTTCAACTACAGGGTGGCTTTCAGGAC
AAGTGAGCTTACAACACTGAGAGGAGCAATTTTAGAAGATGCTATACCCTCTACTGCTAGGCATGGTACC
GCACGAGGACTACCTCTCAAAGAAGTTTTGGAATACGTCAATCCAGAGCTGAGCATTCAAGTGTTCGCGAC
AGGCTTCCAACACTACCAAGGTCTCAGAGCAGCTGCTCAAGCTTGATGAACAAGGGCTGAGCTTTCAGCA
CAAGATCGGGATCCTTTATTGCAAAGCAGGCCAGAGCACAGAGGAAGAGATGTATAACAATGAGACGGCG
GGACCAGCTTTTGAAGAATTCCTTGATCTCTGGGCCAGAGAGTCCGACTGAAAGGATTTAGTAAATATC
GAGCTCAGCTAGACAATAAGACTGATTCACGGGCACGCACTCTCTATACCACATACAAAGACTACGA
ACTCATGTTCCACGTGTCAACCTGCTTCCCTACATGCCCAACAACAGACAACAGCTACTGAGGAAAAGG
CACATAGGAAATGACATCGTCACCATCGTCTTCCAGGAGCCTGGGGCACTTCTTTTACTCCAAAAAGCA
TCCGGTCTCACTTTCAGCATGTCTTTGTCATAGTCAAAGTGCATAATCCATGTACCGAAAATGTGTGTTA
TAGTGTGGAGTTTCCAGATCAAAGATGTGCCACCATTTGGCCACCGATTCCCAAAGGTGTAACTTTT
CCAAAGTCAGCCGTGTTCCGGGACTTCTTTAGCCAAAGTAATCAATGCAGAAAATGCAGCCATAAAT
CAGAAAAGTTTCGAGCAATGGCCACTCGAACGAGGCAGGAGTACTTGAAGATCTGGCGGAGAATTTGT
CACAACCGCCACCGTGGATACCTCTGTGAAGTTCAGCTTACATACGCTGGGTGCGAAGAAAAGGAGAAG
GTAAGCCAAGGAAGGATGCCCACTTGTTAGCATTGGGGCCATCATGTGGCACGTGATAGCCCGGACT
TCGGCCAGTCTGCTGACATTGAATGTCTTCTCGGGATCTCCAATGAGTTCATCATGTTGATTGAAAAGGA
TTCCAAGAATGTTGATTCAACTGTTTCTCGAGGGATGTGATTGGGTGGACATCTGGATTAGTGAGTATC
AAAGTGTTTTACGAAAGAGGAGAATGTGTCTCTGTCTCGGTAGACAACACTGTGCTGAAGACATCAGGG
AAATTGTTTCAGCGATTAGTAATAGTGACGAGAGGCTGCGAGACTGTGAAATGACCCTGAGGAGGAACGG
GCTGGGCCAGCTTGGCTTCCATGTGAATTTTGAAGGAATTGTGCGAGATGTGAACTTTTGGCTTTGCC
TGAAGGCTGGCTTCCGAAGGGAGCCGCTCGTGGAGATCTGCAAAGTAGCCGTGGCCACTCTGACCC
ACGAGCAGATGATCGACCTGCTCCGATCTGTGACTGTGAAGTGGTTCATCATCCAGCCCCATGATGA
CGGCTCGCCCCGAAGAGGGTGTTCAGAGCTCTGCGGGATCCCTATGGTGAATATAAACTCGACAGCGAG
GGACCCCTGCGAGTATAAAACCCCTTCCAGGAGGAACACCACGTGGCACCGGGTGCCCACTCTGCCC
TGCAGCCCTCTCTAGAGCTTCCCCATCCCCGGCACGCCGACCGGCTGCCGTGCCAACAGCTGTCCA
GCAGGCCAGGCTGCCATTCTCGAAGCACCTCTTCCAGCCGAAAGCTGCCCGATGGCACGAGAAGCTCA
CCCAGCAACCAGTCATCTCCAGCGACCTGGACCCGGCGGGAGCGGACCTGGAGACCACAAGTGGGCT
ACGACGGGTGCCAGTCCCCTCTACTGCTCGAACACCAGGGCTCAGGCCCTTGAATGTGACGGAGCCAG
GGAGAGGGAAGACACCATGGAAGCAAGCAGGCACCCGAAACCAATGGCATGGCCACCTTCCAAAGTC
CTGGGTTCTATAAAGAAAGAGCTCTGCAGAAAGATGGAAGTTGCAAAGATTCCCAATAGCTTTCTC
ACATTGGGGATAAAAGTTGCTCCAGTCACTCCAGCAGCAACACGCTCTCCAGCAACACTCCAGCAACAG
TGACGACAAGCACTTTGGGTCTGGCGACCTGATGGACCCGAATTACTGGGGCTGACCTACATCAAAGGG
GCCTCCACCGACAGTGGCATCGACACGGCCCCCTGCATGCCTGCCACCATCCTCGGCCCTGTGCACCTGG
CAGGCAGCAGGTCCCTGATCCACAGCCGGGCCGAGCAGTGGGCTGATGCTGCCGACGTCTCTGGGCTGA
CGACGAGCCAGCAAGTTATATTCTGTGCATGGCTACGCGTCCACCATCTCCGCCGCGAGTGTGCGGAA
GGCAGCATGGGCGATCTCAGTGAGATATCTCTCATTCCAGTGGTCTCACCATTAGGAAGCCCTTCCAG
CTCACTGTTCAAAAAGTAGTGGTCTCTGGATTATCCAAAGTCTACATCGTGTCTCACAGCAGCGGACA
ACAGGTTCCCGGGTCCATGTCCAAGCCCTACCACAGACAAGGGCAGTGAACAAATATGTCATCGGCTGG
AAGAAATCGGAGGGCAGCCACCGCCCGAGGAGCCTGAAGTGACTGAATGTCCCGGATGTATAGTGAGA
TGATGTGATGTCCACAGCAACTCAGCATCAGACAGTGGTGGGAGATGCTGTTGCAGAGACTCAACATGT
TCTGTCTAAAGAAGATTTTCTGAAATTGATGCTTCTGACAGCCCTTAGTGGAGGAGGGGCGAAGAAAAG
TTTTCTGTTCTATGGAACTGTCTCCAAGGAGTTCGTTTACCGCACGCTGTCTGACGAGAGCATCTGCA
GCAACAGGAGGGGGTCTCTTTTGGCAGTTCCTGGAGTTCCTGCTTGACCAGGCCCTGCCAACGACAT
TCTGTTCCAGCACCCACCCTACCACAGCACGCTGCCTCCGCGGGCCACCCCGACCCAGCATGGGG
AGCCTGAGAAAATGAGTTCTGGTCTCCGATGGTCTTATCAGATAAGTCCAAGTGGCAGATCCTGGCC
TGATGCCCTCCCGGACACAGCCACAGGTTAGATTGGACCCACCTCGTGGATGCTGCACGGGCATTTGA
AGGCTTGTACTCAGATGAAGAATGGGGCTGCTGTGACACACGCTCTATCTAGACCAGAGGGTGGCA
TCTTCTGCACCCTGACAGATATGCAGCATGGGCAGGACCTGGAAGGGGCCAAGAGCTGCCCTTATGTG
TAGATCCAGGCAGTGGCAAAGAGTTCAATGGACACAACCTGGGGAGCGTTCTCCATCACCCTGACCGGAA
AGTCAATCAGCTGGAAATTAATCTTCGACAACCTCCAGACCGACCTTCGGAAGGAAAAACAAGACAAGGC
GTTCTCCAAGCAGAAGTGACGACCTGAGACAGGACAACATGAGACTGCAGGAGGAGTCCAGACCCGCA

CAGCTCAGCTGCCGAAATTCACAGAATGGTTTTCCACCACATCGACAAAAAATCT

AGCGGACCGACGCGTACGCGGCCGCTCGAGCAGAAAATCATCTCAGAAGAGGATCTGGCAGCAAATGATATCC
TGGATTACAAGGATGACGACGATAAGGTTTAA

Protein Sequence:

>RC222136 representing NM_020808
Red=Cloning site Green=Tags(s)

MSDPRQSQEEKHLGRASSKFKDPPRIMQSDDYFARKFKAINGNMGPTTSLNASNSNETGGGGPANGTPA
VPKMGVRAVSEWPPKKDCSKEL TCKALWESRSQTSYESITSVLQNGQSDQSEGGQDEQLDLDFVEAKYT
IGDIFVHSPQRGLHPIRQRSNSDVTISDIDAEDVLDQNAVNPNTGAALHREYGSTSSIDRQGLSGENFFA
MLRGYRVENYDHKAMVPFGFPEFFRCDPAISPSLHAAAQISRGEFVRISGLDYVDSALLMGRDRDKPFKR
RLKSESVETSLFRKLRTVKSEHETFKFTSELEESRLERGIWPWCQRCFAHYDVQSILFNINEAMATRAN
VGKRKNITTGASAASTQMPGTGQGNCEPGLSKEDLNSKENLDADEGDGKSNLVLSCPYFRNETGGEG
DRRIALSRANSSSFSSGESCSFESSLSHCTNAGVSVLEVPRENQPIHREKVKRYIEHIDLGAYYRKF
FYGKEHQNYFGIDENLGPVAVSIRREKVEDAKEKEGSQFNRYVAFRTSELTTLRGAILED AIPSTARHGT
ARGLPLKEVLEYVPELSIQCLRQASNSPKVSEQLLKLDEQGLSFQHKIGILYCKAGQSTEEEMYNNETA
GPAFEFLDLLGQRVRLKGF SKYRAQLDNKTDSTGTHSLYTTYKDYELMFHVSTLLPYMPNRRQQLLRK
HIGNDIVTIVFQEPGALPFTPKSIRSHFQHVIVKVHNPCTENVCSVGVSRSKDVPPFGPPPKGVT
PKSAVFRDFTLLAKVINAENAAHKSEKFRAMATRTRQEYLKDLAENFVTTATVDTSVKFSFITLGAKKKEK
VKPRKDAHLFSIGAIMWHVIARDFGQSADIECLLGISNEFIMLIEKDSKNVFNCSRDVIGWTSGLVSI
KVFYERGERCVLLSSVDNCAEDIREIVQRLVIVTRGCETVEMTLRRNGLGQLGFHVNFEGIVADVEPFGFA
WKAGLRQGSRLVEICKVAVATLTHEQMIDLLRTSVTVKVVIIQPHDDGSPRRGCSELCRIPMVEYKLDSE
GTPCEYKTPFRNTTWHRVPTALQPLSRASPIGTPDRLPCQQLLQQAQAAIPRSTSFDRKLPDGRSS
PSNQSSSDPGPGGSGPWRPQVGYDGCQSPLLLLEHQGSGPLECDGAREREDTMEASRHPETKWHGPPSKV
LGSYKERALQKDGSKDSPNKL SHIGDKSCSSHSSNTLSSNTSSNSDDKHFSGDLMPELLGLTYIKG
ASTDSGIDTAPCMPATILGPVHLAGSRSLIHSRAEQWADAADVSGPDDEPAKLYSVHGYASTISAGSAAE
GSMGDLSEISSHSGSHSGSPSAHCSKSSGSLDSSKVVIVSHSSGQVPGSMKPYHRQGAVNKYVIGW
KKSEGSPPPPEEVEVTECPGMYSEMDVMSTATQHQT VVGDAVAETQHVLSKEDFLKMLPDSPLVEEGRRK
FSFYGNLSPRRSLYRTLSDSICSNRRGSSFGSSRSVLDQALPNDILFSTTPPYHSTLPPRAHPAPSMG
SLRNEFWFSDGSLSDKSKCADPGLMPLPDTATGLDWTHLVDAARAFEGLDSEELGLLCHHTSYLDQORVA
SFCTLTDMQHGQDLEGAQELPLCVDPGSGKEFMDTTGERSPSPLTGKVNQLELILRQLQTDLRKEKQDKA
VLQAEVQHLRQDNMRMQEESQTATAQLRKFTWFFTTIDKKS

SGPTRRRLQKLI SEEDLAANDILDYKDDDDKV

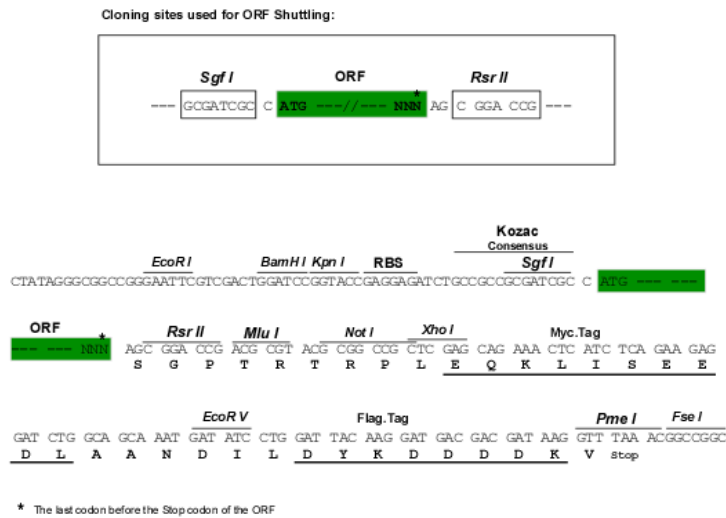
Chromatograms:

https://cdn.origene.com/chromatograms/mk8039_e11.zip

Restriction Sites:

Sgfl-RsrII

Cloning Scheme:



ACCN: NM_020808

ORF Size: 5166 bp

OTI Disclaimer: The molecular sequence of this clone aligns with the gene accession number as a point of reference only. However, individual transcript sequences of the same gene can differ through naturally occurring variations (e.g. polymorphisms), each with its own valid existence. This clone is substantially in agreement with the reference, but a complete review of all prevailing variants is recommended prior to use. [More info](#)

OTI Annotation: This clone was engineered to express the complete ORF with an expression tag. Expression varies depending on the nature of the gene.

Components: The ORF clone is ion-exchange column purified and shipped in a 2D barcoded Matrix tube containing 10ug of transfection-ready, dried plasmid DNA (reconstitute with 100 ul of water).

Reconstitution Method:

1. Centrifuge at 5,000xg for 5min.
2. Carefully open the tube and add 100ul of sterile water to dissolve the DNA.
3. Close the tube and incubate for 10 minutes at room temperature.
4. Briefly vortex the tube and then do a quick spin (less than 5000xg) to concentrate the liquid at the bottom.
5. Store the suspended plasmid at -20°C. The DNA is stable for at least one year from date of shipping when stored at -20°C.

RefSeq: [NM_020808.5](#)

RefSeq Size: 6501 bp

RefSeq ORF: 5169 bp

Locus ID: 57568

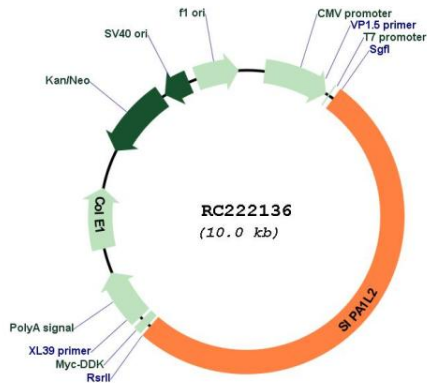
UniProt ID: [Q9P2F8](#)

Cytogenetics: 1q42.2

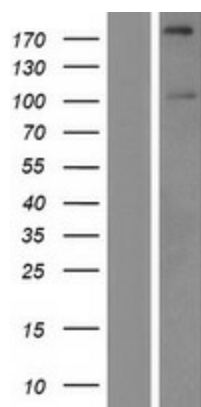
MW: 190.3 kDa

Gene Summary: This gene encodes a member of the signal-induced proliferation-associated 1 like family. Members of this family contain a GTPase activating domain, a PDZ domain and a C-terminal coiled-coil domain with a leucine zipper. A similar protein in rat acts as a GTPases for the small GTPase Rap. [provided by RefSeq, Sep 2015]

Product images:



Circular map for RC222136



Western blot validation of overexpression lysate (Cat# [LY412279]) using anti-DDK antibody (Cat# [TA50011-100]). Left: Cell lysates from untransfected HEK293T cells; Right: Cell lysates from HEK293T cells transfected with RC222136 using transfection reagent MegaTran 2.0 (Cat# [TT210002]).