

Product datasheet for **RC222133**

XYLT1 (NM_022166) Human Tagged ORF Clone

Product data:

Product Type:	Expression Plasmids
Product Name:	XYLT1 (NM_022166) Human Tagged ORF Clone
Tag:	Myc-DDK
Symbol:	XYLT1
Synonyms:	DBQD2; PXYLT1; XT-I; XT1; XTl; xylT-I; XYLTl
Mammalian Cell Selection:	Neomycin
Vector:	pCMV6-Entry (PS100001)
E. coli Selection:	Kanamycin (25 ug/mL)



[View online »](#)

Protein Sequence: >RC222133 representing NM_022166
 Red=Cloning site Green=Tags(s)

MVAAPCARRLARRSHSALLAALTVLLLQTLVWNFSSLDSGAGERRGGAAVGGGEQPPAPAPRRRRDL
 PAEPAAARGGGGGGGGGGRGPQARARGGGPEPRGQPASRGALPARALDHPSPPLITLETQDGYFSH
 RPKKEKVRTDSNNENSVPKDFENVDNSNAPRTQKQKHQPELAKKPPSRQKELLKRKLEQQEKKGHTFPG
 KGPGEVLPDRAAANSSHGKDVSRPPHARKTGGSSPETKYDQPPKCDISGKEAISALSRKSKHCRQEI
 GETYCRHKLGLLMPEKVTRFCPLEGKANKNVQWDEDSVEYMPANPVRIAFVLVHGRASRQLQRMFKAIY
 HKDHFYIYHVDKRSNYLHRQVLQVSRQYSNVRVTPWRMATIWGGASLLSTYLQSMRDLEMTDWPWDFFI
 NLSAADYPIRTNDQLVAFLSRYRDMNFKSHGRDNARFIRKQGLDRLFLECDAHMWRLGDRRIPEGIAVD
 GGSDFLLNRRFVEYVTFSTDDLVTMVKMFYSYLLPAESFFHTVLENSPHCDTMDNLRITNWNRLG
 CKCQYKHIVDWCGCSPNDFKQDFHRFQQTARPTFFARKFEAVNQEIIQQLDYLYGNYPAGTPGLRSY
 WENVYDEPDGIHSLSDVTLTYHSFARLGLRRAETSLHTDGENSCRYYPMGHPASVHLYFLADRFQGLI
 KHHATNLAVSKLETLETWVMPKVKFIASPPSDFGRLQFSEVGTDWDAKERLFRNFGLLGPMDEPVMGQ
 KWGKGNVTVTVIWDVNVNIAATYDILIESTAETHYKPLNPLRPGVWTVKILHHVVPVAETKFLVA
 PLTFSNRQPIKPEEALKLHNGPLRNAYMEQSFQSLNPVLSLPINPAQVEQARRNAASTGTALEGWLDSL
 YGMMWTAMDICATGPTACPMQTCSTAWSSFSPPDKSELGAVKPDGRLR

TRTRPLEQKLISEEDLAANDILDYKDDDDKV

Chromatograms: https://cdn.origene.com/chromatograms/mk8039_f01.zip

Restriction Sites: SgfI-MluI

Cloning Scheme:

Cloning sites used for ORF Shuttling:



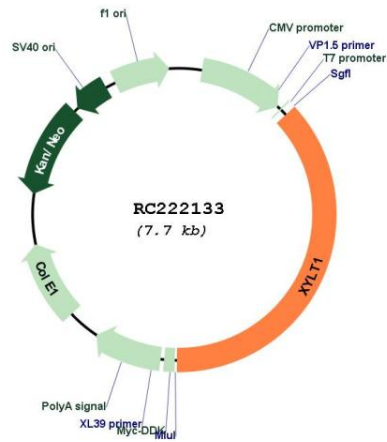
* The last codon before the Stop codon of the ORF

ACCN: NM_022166

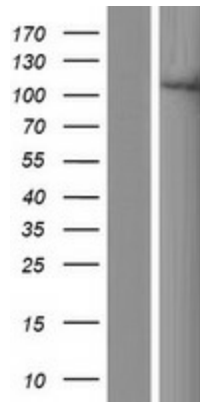
ORF Size: 2877 bp

OTI Disclaimer:	The molecular sequence of this clone aligns with the gene accession number as a point of reference only. However, individual transcript sequences of the same gene can differ through naturally occurring variations (e.g. polymorphisms), each with its own valid existence. This clone is substantially in agreement with the reference, but a complete review of all prevailing variants is recommended prior to use. More info
OTI Annotation:	This clone was engineered to express the complete ORF with an expression tag. Expression varies depending on the nature of the gene.
Components:	The ORF clone is ion-exchange column purified and shipped in a 2D barcoded Matrix tube containing 10ug of transfection-ready, dried plasmid DNA (reconstitute with 100 ul of water).
Reconstitution Method:	<ol style="list-style-type: none">1. Centrifuge at 5,000xg for 5min.2. Carefully open the tube and add 100ul of sterile water to dissolve the DNA.3. Close the tube and incubate for 10 minutes at room temperature.4. Briefly vortex the tube and then do a quick spin (less than 5000xg) to concentrate the liquid at the bottom.5. Store the suspended plasmid at -20°C. The DNA is stable for at least one year from date of shipping when stored at -20°C.
RefSeq:	NM_022166.2 , NP_071449.1
RefSeq Size:	4178 bp
RefSeq ORF:	2880 bp
Locus ID:	64131
UniProt ID:	Q86Y38
Cytogenetics:	16p12.3
Protein Families:	Transmembrane
Protein Pathways:	Chondroitin sulfate biosynthesis, Heparan sulfate biosynthesis, Metabolic pathways
MW:	107.4 kDa
Gene Summary:	This locus encodes a xylosyltransferase enzyme. The encoded protein catalyzes transfer of UDP-xylose to serine residues of an acceptor protein substrate. This transfer reaction is necessary for biosynthesis of glycosaminoglycan chains. Mutations in this gene have been associated with increased severity of pseudoxanthoma elasticum.[provided by RefSeq, Nov 2009]

Product images:



Circular map for RC222133



Western blot validation of overexpression lysate (Cat# [LY411721]) using anti-DDK antibody (Cat# [TA50011-100]). Left: Cell lysates from untransfected HEK293T cells; Right: Cell lysates from HEK293T cells transfected with RC222133 using transfection reagent MegaTran 2.0 (Cat# [TT210002]).