

Product datasheet for RC222129

VEGFA (NM_001025370) Human Tagged ORF Clone

Product data:

Product Type: Expression Plasmids
Product Name: VEGFA (NM_001025370) Human Tagged ORF Clone
Tag: Myc-DDK
Symbol: VEGFA
Synonyms: MVCD1; VEGF; VPF
Mammalian Cell Selection: Neomycin
Vector: pCMV6-Entry (PS100001)
E. coli Selection: Kanamycin (25 ug/mL)
ORF Nucleotide Sequence: >RC222129 representing NM_001025370
 Red=Cloning site Blue=ORF Green=Tags(s)

TTTTGTAATACGACTCACTATAGGGCGGCCGGAATTCGTCGACTGGATCCGGTACCGAGGAGATCTGCC
 GCC**CGATCGCC**

ATGACGGACAGACAGACAGACACCGCCCCAGCCCCAGCTACCACCTCCTCCCCGGCCGGCGGGACAG
 TGGACGCGGGCGGAGCCGCGGGCAGGGCCGGAGCCCGCCGGAGGGCGGGTGGAGGGGTCCGGGC
 TCGCGCGTCCGACTGAACTTTTCGTCCAACCTCTGGGCTGTTCTCGCTTCGGAGGAGCCGTGGTCCG
 GCGGGGAAGCCGAGCCGAGCGGAGCCGCGAGAAGTGCTAGCTCGGGCCGGGAGGAGCCGACGCCGAGG
 AGGGGAGGAGGAAGAAGAGAAGGAAGAGGAGAGGGGCCGAGTGGCGACTCGGCGCTCGGAAGCCGGG
 CTATGGACGGGTGAGGCGCGGTGTGCGCAGACAGTGTCCAGCCGCGCGCTCCCCAGGCCCTGGCC
 CGGGCCTCGGGCCGGGAGGAAGTAGCTCGCCGAGGCGCCGAGGAGAGCGGGCCGCCACAGCCGA
 GCCGGAGAGGGAGCGGAGCCGCGCCGGCCCGGTCGGGCCTCCGAAACCATGAACCTTTCTGCTGTCTTG
 GGTGCAATTGGAGCCTTGCTTGTCTACTCTCCACCATGCCAAGTGGTCCCAGGCTGCACCCATGGCA
 GAAGGAGGAGGGCAGAATCATCACGAAGTGGTGAAGTTCATGGATGTCTATCAGCGCAGCTACTGCCATC
 CAATCGAGACCCTGGTGGACATCTCCAGGAGTACCCTGATGAGATCGAGTACATCTTCAAGCCATCCTG
 TGTGCCCTGATGCGATGCGGGGCTGCTGCAATGACGAGGGCCCTGGAGTGTGTGCCACTGAGGAGTCC
 AACATCACCATGCAGATTATGCGGATCAAACCTACCAAGGCCAGCACATAGGAGAGATGAGCTTCTCTAC
 AGCACAACAAATGTGAATGCAGACCAAAGAAAGATAGAGCAAGACAAGAAAAATGTGACAAGCCGAGGCC
 G

ACGCGTACGCGGCCGCTCGAGCAGAACTCATCTCAGAAGAGGATCTGGCAGCAATGATATCCTGGATT
 ACAAGGATGACGACGATAAGGTTTAA



[View online »](#)

Protein Sequence: >RC222129 representing NM_001025370
Red=Cloning site Green=Tags(s)

MTDRQTD TAPSPSYHLLPGRRTVDAAASRGQGPEPAPGGGVEGVGARGVALKLFVQLLGCSRFGGAVVR
 AGEAEP SGAARSASSGREEPQPEEGEEEEKEEERGPQWRLGARKPGSWTGEAAVCADSAPAARAPQALA
 RASGRGRVARRGAEESGPPHSPRRGSASRAGPGRASETMNFLLSWVHWSLALLLLYHHAKWSQAAPMA
 EGGGQNHHEVVKFMDVYQRSYCHPIETLVDFIQEYPDEIEYIFKPSCVPLMRCGGCCNDEGLECVPTES
 NITMQIMRIKPHQGHIGEMSF LQH NKCECRPKKDRARQEKC DKPRR

TRTRPLEQKLISEEDLAANDILDYKDDDDKV

Chromatograms: https://cdn.origene.com/chromatograms/mg2755_d09.zip

Restriction Sites: SgfI-MluI

Cloning Scheme:

Cloning sites used for ORF Shuttling:



* The last codon before the Stop codon of the ORF

ACCN: NM_001025370

ORF Size: 981 bp

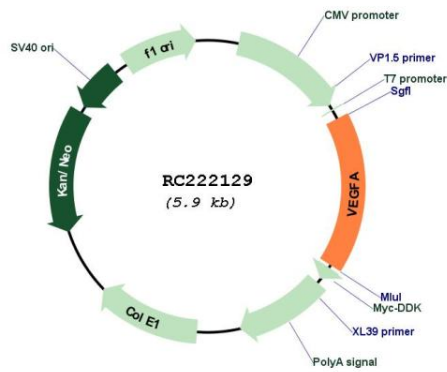
OTI Disclaimer: The molecular sequence of this clone aligns with the gene accession number as a point of reference only. However, individual transcript sequences of the same gene can differ through naturally occurring variations (e.g. polymorphisms), each with its own valid existence. This clone is substantially in agreement with the reference, but a complete review of all prevailing variants is recommended prior to use. [More info](#)

OTI Annotation: This clone was engineered to express the complete ORF with an expression tag. Expression varies depending on the nature of the gene.

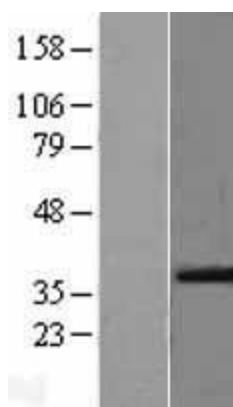
Components: The ORF clone is ion-exchange column purified and shipped in a 2D barcoded Matrix tube containing 10ug of transfection-ready, dried plasmid DNA (reconstitute with 100 ul of water).

Reconstitution Method:	<ol style="list-style-type: none">1. Centrifuge at 5,000xg for 5min.2. Carefully open the tube and add 100ul of sterile water to dissolve the DNA.3. Close the tube and incubate for 10 minutes at room temperature.4. Briefly vortex the tube and then do a quick spin (less than 5000xg) to concentrate the liquid at the bottom.5. Store the suspended plasmid at -20°C. The DNA is stable for at least one year from date of shipping when stored at -20°C.
Note:	Plasmids are not sterile. For experiments where strict sterility is required, filtration with 0.22um filter is required.
RefSeq:	NM_001025370.3
RefSeq Size:	3410 bp
RefSeq ORF:	984 bp
Locus ID:	7422
UniProt ID:	P15692
Cytogenetics:	6p21.1
Protein Families:	Druggable Genome, Secreted Protein
Protein Pathways:	Bladder cancer, Cytokine-cytokine receptor interaction, Focal adhesion, mTOR signaling pathway, Pancreatic cancer, Pathways in cancer, Renal cell carcinoma, VEGF signaling pathway
MW:	35.5 kDa
Gene Summary:	<p>This gene is a member of the PDGF/VEGF growth factor family. It encodes a heparin-binding protein, which exists as a disulfide-linked homodimer. This growth factor induces proliferation and migration of vascular endothelial cells, and is essential for both physiological and pathological angiogenesis. Disruption of this gene in mice resulted in abnormal embryonic blood vessel formation. This gene is upregulated in many known tumors and its expression is correlated with tumor stage and progression. Elevated levels of this protein are found in patients with POEMS syndrome, also known as Crow-Fukase syndrome. Allelic variants of this gene have been associated with microvascular complications of diabetes 1 (MVCD1) and atherosclerosis. Alternatively spliced transcript variants encoding different isoforms have been described. There is also evidence for alternative translation initiation from upstream non-AUG (CUG) codons resulting in additional isoforms. A recent study showed that a C-terminally extended isoform is produced by use of an alternative in-frame translation termination codon via a stop codon readthrough mechanism, and that this isoform is antiangiogenic. Expression of some isoforms derived from the AUG start codon is regulated by a small upstream open reading frame, which is located within an internal ribosome entry site. The levels of VEGF are increased during infection with severe acute respiratory syndrome coronavirus 2 (SARS-CoV-2), thus promoting inflammation by facilitating recruitment of inflammatory cells, and by increasing the level of angiotensin II (Ang II), one of two products of the SARS-CoV-2 binding target, angiotensin-converting enzyme 2 (ACE2). In turn, Ang II facilitates the elevation of VEGF, thus forming a vicious cycle in the release of inflammatory cytokines. [provided by RefSeq, Jun 2020]</p>

Product images:



Circular map for RC222129



Western blot validation of overexpression lysate (Cat# [LY422439]) using anti-DDK antibody (Cat# [TA50011-100]). Left: Cell lysates from untransfected HEK293T cells; Right: Cell lysates from HEK293T cells transfected with RC222129 using transfection reagent MegaTran 2.0 (Cat# [TT210002]).