

Product datasheet for **RC222128**

TECK (CCL25) (NM_005624) Human Tagged ORF Clone

Product data:

Product Type: Expression Plasmids
Product Name: TECK (CCL25) (NM_005624) Human Tagged ORF Clone
Tag: Myc-DDK
Symbol: TECK
Synonyms: Ckb15; Ck beta-15; SCYA25; TECK
Mammalian Cell Selection: Neomycin
Vector: pCMV6-Entry (PS100001)
E. coli Selection: Kanamycin (25 ug/mL)
ORF Nucleotide Sequence: >RC222128 ORF sequence
Red=Cloning site Blue=ORF Green=Tags(s)

TTTTGTAATACGACTCACTATAGGGCGGCCGGAATTCGTCGACTGGATCCGGTACCGAGGAGATCTGCC
GCC**CGGATCGCC**

ATGAACCTGTGGCTCCTGGCCTGCCTGGTGGCCGGCTTCTGGGAGCCTGGGCCCCCGCTGTCCACACCC
AAGGTGTCTTTGAGGACTGCTGCCTGGCCTACCACTACCCATTGGGTGGGCTGTGCTCCGGCGCGCCTG
GACTTACCGGATCCAGGAGGTGAGCGGGAGCTGCAATCTGCCTGCTGCGATATTCTACCTCCCAAGAGA
CACAGGAAGGTGTGTGGAAACCCAAAAGCAGGGAGGTGCAGAGAGCCATGAAGCTCCTGGATGCTCGAA
ATAAGGTTTTTGCAAAGCTCCACCACAACACGCAGACCTTCCAAGCAGGCCCTCATGCTGTAAGAAGTT
GAGTTCTGGAACTCCAAGTTATCATCATCCAAGTTTAGCAATCCCATCAGCAGCAGCAAGAGGAATGTC
TCCCTCTGATATCAGCTAATTCAGGACTG

ACGCGTACGCGGCCGCTCGAGCAGAACTCATCTCAGAAGAGGATCTGGCAGCAAATGATATCCTGGATT
ACAAGGATGACGACGATAAGGTTTAA

Protein Sequence: >RC222128 protein sequence
Red=Cloning site Green=Tags(s)

MNLWLLACLVAGFLGAWAPAVHTQGVFEDCCLAYHYPIGWAVLRRAWTYRIQEVSGSCNLPAAIFYLPKR
HRKVCGNPKSREVQRAMKLLDARNKVF AKLHHNTQTFQAGPHAVKKLSSGNSKLSSEKFSNPISSEKRN
SLLISANSGL

TRTRPLEQKLI SEEDLAANDILDYKDDDDKV

Chromatograms: https://cdn.origene.com/chromatograms/mk6469_f03.zip



[View online >](#)

Restriction Sites: SgfI-MluI

Cloning Scheme:



ACCN: NM_005624

ORF Size: 450 bp

OTI Disclaimer: The molecular sequence of this clone aligns with the gene accession number as a point of reference only. However, individual transcript sequences of the same gene can differ through naturally occurring variations (e.g. polymorphisms), each with its own valid existence. This clone is substantially in agreement with the reference, but a complete review of all prevailing variants is recommended prior to use. [More info](#)

OTI Annotation: This clone was engineered to express the complete ORF with an expression tag. Expression varies depending on the nature of the gene.

Components: The ORF clone is ion-exchange column purified and shipped in a 2D barcoded Matrix tube containing 10ug of transfection-ready, dried plasmid DNA (reconstitute with 100 ul of water).

Reconstitution Method:

1. Centrifuge at 5,000xg for 5min.
2. Carefully open the tube and add 100ul of sterile water to dissolve the DNA.
3. Close the tube and incubate for 10 minutes at room temperature.
4. Briefly vortex the tube and then do a quick spin (less than 5000xg) to concentrate the liquid at the bottom.
5. Store the suspended plasmid at -20°C. The DNA is stable for at least one year from date of shipping when stored at -20°C.

Note: Plasmids are not sterile. For experiments where strict sterility is required, filtration with 0.22um filter is required.

RefSeq: [NM_005624.3](#), [NP_005615.2](#)

RefSeq Size: 1002 bp

RefSeq ORF: 453 bp

Locus ID: 6370

UniProt ID: [O15444](#)

Cytogenetics: 19p13.2

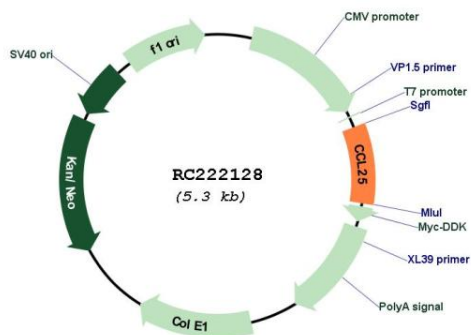
Protein Families: Druggable Genome, Secreted Protein

Protein Pathways: Chemokine signaling pathway, Cytokine-cytokine receptor interaction

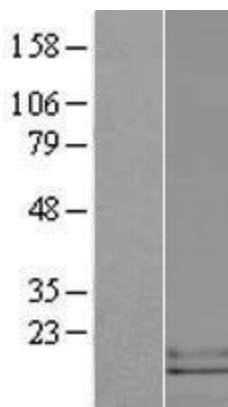
MW: 16.6 kDa

Gene Summary: This antimicrobial gene belongs to the subfamily of small cytokine CC genes. Cytokines are a family of secreted proteins involved in immunoregulatory and inflammatory processes. The CC cytokines are proteins characterized by two adjacent cysteines. The cytokine encoded by this gene displays chemotactic activity for dendritic cells, thymocytes, and activated macrophages but is inactive on peripheral blood lymphocytes and neutrophils. The product of this gene binds to chemokine receptor CCR9. Alternative splicing results in multiple transcript variants. [provided by RefSeq, Sep 2014]

Product images:



Circular map for RC222128



Western blot validation of overexpression lysate (Cat# [LY417181]) using anti-DDK antibody (Cat# [TA50011-100]). Left: Cell lysates from untransfected HEK293T cells; Right: Cell lysates from HEK293T cells transfected with RC222128 using transfection reagent MegaTran 2.0 (Cat# [TT210002]).