

## Product datasheet for **RC222124**

### SOBP (NM\_018013) Human Tagged ORF Clone

#### Product data:

Product Type:	Expression Plasmids
Product Name:	SOBP (NM_018013) Human Tagged ORF Clone
Tag:	Myc-DDK
Symbol:	SOBP
Synonyms:	JXC1; MRAMS
Mammalian Cell Selection:	Neomycin
Vector:	pCMV6-Entry (PS100001)
E. coli Selection:	Kanamycin (25 ug/mL)



[View online »](#)

**ORF Nucleotide Sequence:**

>RC222124 representing NM\_018013  
 Red=Cloning site Blue=ORF Green=Tags(s)

TTTTGTAATACGACTCACTATAGGGCGGCCGGAATTCGTCGACTGGATCCGGTACCGAGGAGATCTGCC  
 GCC**CGGATCGCC**

ATGGCAGAAATGGAGAAAGAAGGGAGACCTCCCGAAAATAAACGGAGCAGGAAGCCGGCTCACCCAGTGA  
 AAAGGGAGATCAATGAGGAGATGAAGAACCTTTCAGAAAACACCATGAATGAACTCCTTGCTGGTATGG  
 CTATGATAAGGTTGAATTAAGATGGTGGGATATTGAATTCAGGAGCTACCCTACAGATGGGGAGAGC  
 CGGCAGCACATTTCTGTTCTCAAAGAAAATTTTTCGCAAAAACAAAATACCCGAGGACAGTGTATTT  
 CACCATAACAATAAGCACAGGCTATTCAGGGCTTGCCTGAAATGGACTCAGTGACTCACCTGCAGG  
 GTCAAAGGATCATGGCAGTGTGCCATTATTGTACCTTAATTCCACCACCTTTCATAAAGCCACCAGCA  
 GAAGATGATGTCAAATGTACAATAATGTGTGCCTGGTCCAGAAAGTGGGAATCAAGCGCTATTCCC  
 TGAGTATGGGAAGTGAGGTGAAAAGCTTTCAGCAGGAGAAGTGTTCGCGCCTGCCGACGAGCCTACTT  
 CAAGAGAAATAAGGCTAGAGATGAAGATGGACATGCTGAAAATTTCCCGAGCAGCACTATGCTAAGGAA  
 ACTCCAAGGCTTGCCTTCAAGAATAACTGCGAACTACTTGTATGTGACTGGTGAAGCACATAAGACACA  
 CAAAAGAATACCTGGATTTTGGGACGGGAAAGAAGGCTTCAGTTCTGCAGTGCAAAATGTCTCAATCA  
 ATACAAAATGGACATTTCTACAAAGAGACCCAGGCCAATCTTCCAGCTGGGCTGTGCAGCACATTACAC  
 CCTCCCATGGAAAATAAAGCAGAAGGCACCGGGGTGCAGCTGCTCACTCCAGACTCTTGGAAATACCCGC  
 TAACAGATGCTCGGAGGAAGGCCCTCCCGGTGGCTACAGTGGCCAAAGCCAGGGCCCTGGCCCGTC  
 GGGCTCCACCACCGTCTCTCCATCTGACACTGCCAAGTCTGTCACTAAAATCCACGCCAGTGCC  
 AAGTCCATCCCATCAGCGAGACTCAAATATCCCTCTGTCTCCGTCCAGCCACCTGCTAGCATCGGGC  
 CTTCCCTTGGCGTCCCGCTCGGAGCCCTCCCATGGTGATGACCAACCGCGGCCGGTCCGCTGCCAT  
 CTTCAATGGAGCAGCAGATCATGCAGCAGATCCGCCCGCCCTTCAATCCGCGGGCCTCCGCACCATGCCTCC  
 AACCCCAACAGCCCTGTCCAACCCATGCTTCCCGCATCGGGCCCCCGCCGGTGGCCCCAGAACC  
 TGGGCCCACTTCCAGCCCATGCACCGGCCATGCTATCGCCCCACATCCACCCCCGAGCACCCCCAC  
 CATGCCCGGAACCCCCAGGCTGTGCCCGCCGCTCCGGGCGCCCGCTGCCGAGTCTTCCCTTC  
 CCGCCAGTGAGCATGATGCCAAATGGCCCGATGCCGGTGGCCAGATGATGAATTTGGGCTGCCGTCG  
 TTGCCCGCTGGTCCCGCCCGACCCTGCTCGTGCCGTACCCCGTATCGTGCCCTACCGGTGCCAT  
 CCCCATCCCATCCCTATCCCTCAGTCAGCGACTCCAAGCCCCAACGGTTCTCCAGCAACGGGGAG  
 AACTTCATTCCGAACGCCCTGGCGACTCCGCGCGGGCGGGCGCAAGCCAAGCGGACACTCCCTGTCCC  
 CCGGGACTCCAAGCAGGGCTCGTCCAAGTCCGCGGACTCGCCCCCGGCTGCTCGGGCCAGGCCCTGAG  
 CCTGGCGCCACGCCCGCGAGCATGGCCGGAGCGAGGTGGTGGACCTGACGCGGCGCGCCGCGAGCCCC  
 CCGGGCCCCCGGGCGCGGGCGGCCAGCTCGGCTTCCAGGCGTGTGCAGGGCCCCGAGGACGGCGTCA  
 TCGACTGACCGTGGGCCACCGAGCCCGGCTGCACAACGTGATCCACCGCGCTGCACGCGCACGTCAA  
 GGCGGAGCGGAGCCGAGCGCGGAGCGCAGGACCTGCGGGCGGCTGCAGGGACGGCCACTGCAGCCCC  
 CCCGCCCGGGGACCCAGGCCCGGGCGCCCCGGCGGGCCCCGAGGCGGCGCGGCTGCAACGTATCG  
 TGAACGGCACGCGCGGCGCCCGCCGAGGGCGCTAAGAGCGCGGAGCCGCTCCCGAGCAGCCCGCC  
 GCCCGCGCCCGCGCCCCCAAGAAGTGTGTGCTGAGGAACCGCGGTGAGCGAGCTAGAGTCG  
 GTC AAGGAGAATAACTGTGCTTCCAACCTGCCACCTGGACGGGAGCGGCCAAAAAGCTGATGGGGAGG  
 AGGCCCTGGCGGGGGGACAAGTCAGACCCGAACCTTAATAACCCCGGAGCAGGACCATGCCTATGC  
 TCTGCGGATGCTGCCAAGACCGGCTGCGTGATCCAGCCTGTGCCAAAACCCGCGGAGAAGGCTGCCATG  
 GCACCGTGATCATCTCTCGCCATGCTCAGCGCGGGCCTGAGGACCTGGAGCCGCGCTCAAAGGA  
 GGTGCCTCCGAATTAGAAATCAGAATAAG

**ACGCGT**ACGCGGCCGCTCGAGCAGAACTCATCTCAGAAGAGGATCTGGCAGCAATGATATCTGGATT  
 ACAAGGATGACGACGATAAGGTTTAA

**Protein Sequence:** >RC222124 representing NM\_018013  
 Red=Cloning site Green=Tags(s)

MAEMEKEGRPPENKRSRKAHPVKREINEEMKNFAENTMNELLGWYGDKVELKDGEDIEFRSYPYTDGES  
 RQHISVLKENS LKPKLPEDSVISPYNISTGYSGLATGNGLSDSPAGSKDHGSVP IIVPLIPPPF IKPPA  
 EDDVSNVQIMCAWCQKVGIKRYSLSMGSEVKSFCSEKFAACRRAYFKRNKARDEDGHAENFPQQHYAKE  
 TPRLAFKNNCELLVCDWCKHIRHTKEYLDFGDGERRLQFCSAKCLNQYKMDIFYKETQANLPAGLCSTLH  
 PPMENKAEGTGVQLLTPDSWNIPLTDARRKAPSPVATAGSQSGPGPSASTTVSPSDTANCSVTKIPTVPV  
 KSIP ISETPNIPVSVQPPASIGPPLGVPPRSPPMVMTNRGPVPLPIFMEQQIMQQRPPFIRGPPPHAS  
 NPNSPLSNPMLPGIGPPP GGPRNLGPTSSPMHRPMLSPHIHPPSTPTMPGNPPGLLPPPPP GAPLPSLPF  
 PPVSMMPNGMPVQMMNFGLPSLAPLVPPTLLVPYPVIVPLVPIPIPIPIPHVSDSKPPNGFSSNGE  
 NFIPNAPGDSAAAGGKPSGHSLSPRDSKQGSSKADSPPGCSGQALSLAPTPAEHGRSEVVDL TRRAGSP  
 PGPPGAGGQLGFPVQLQGPQDGVIDLTVGHRARLHNVIHRALHAHVKAEREPSAAERRTCGGCRDGHCS  
 PAAGDPGPAGAPEAAAACNVI VNGTRGAAAEGAKSAEPPPEQPPPPPP APPKLLSPEEPVSELES  
 VKENNCASNCHLDGEAAKLMGEEALAGGDKSDPNLNNPADEDHAYALRMLPKTGCVIQPVKPAEKAAM  
 APCIISSPMLSAGPEDLEPLKRRCLIRNQNK

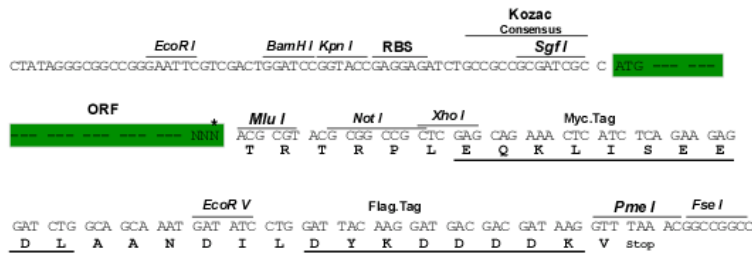
TRTRPLEQKLISEEDLAANDILDYKDDDDKV

**Chromatograms:** [https://cdn.origene.com/chromatograms/mk8039\\_f02.zip](https://cdn.origene.com/chromatograms/mk8039_f02.zip)

**Restriction Sites:** SgfI-MluI

**Cloning Scheme:**

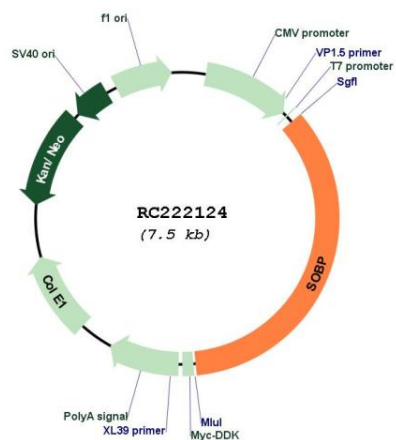
Cloning sites used for ORF Shuttling:



\* The last codon before the Stop codon of the ORF

<b>ACCN:</b>	NM_018013
<b>ORF Size:</b>	2619 bp
<b>OTI Disclaimer:</b>	The molecular sequence of this clone aligns with the gene accession number as a point of reference only. However, individual transcript sequences of the same gene can differ through naturally occurring variations (e.g. polymorphisms), each with its own valid existence. This clone is substantially in agreement with the reference, but a complete review of all prevailing variants is recommended prior to use. <a href="#">More info</a>
<b>OTI Annotation:</b>	This clone was engineered to express the complete ORF with an expression tag. Expression varies depending on the nature of the gene.
<b>Components:</b>	The ORF clone is ion-exchange column purified and shipped in a 2D barcoded Matrix tube containing 10ug of transfection-ready, dried plasmid DNA (reconstitute with 100 ul of water).
<b>Reconstitution Method:</b>	<ol style="list-style-type: none"><li>1. Centrifuge at 5,000xg for 5min.</li><li>2. Carefully open the tube and add 100ul of sterile water to dissolve the DNA.</li><li>3. Close the tube and incubate for 10 minutes at room temperature.</li><li>4. Briefly vortex the tube and then do a quick spin (less than 5000xg) to concentrate the liquid at the bottom.</li><li>5. Store the suspended plasmid at -20°C. The DNA is stable for at least one year from date of shipping when stored at -20°C.</li></ol>
<b>RefSeq:</b>	<a href="#">NM_018013.4</a>
<b>RefSeq Size:</b>	6248 bp
<b>RefSeq ORF:</b>	2622 bp
<b>Locus ID:</b>	55084
<b>UniProt ID:</b>	<a href="#">A7XYQ1</a>
<b>Cytogenetics:</b>	6q21
<b>MW:</b>	92.5 kDa
<b>Gene Summary:</b>	The protein encoded by this gene is a nuclear zinc finger protein that is involved in development of the cochlea. Defects in this gene have also been linked to intellectual disability. [provided by RefSeq, Mar 2011]

Product images:



Circular map for RC222124