

## Product datasheet for **RC222119**

### POGK (NM\_017542) Human Tagged ORF Clone

#### Product data:

Product Type:	Expression Plasmids
Product Name:	POGK (NM_017542) Human Tagged ORF Clone
Tag:	Myc-DDK
Symbol:	POGK
Synonyms:	BASS2; KRBOX2; LST003
Mammalian Cell Selection:	Neomycin
Vector:	pCMV6-Entry (PS100001)
E. coli Selection:	Kanamycin (25 ug/mL)



[View online »](#)

**ORF Nucleotide Sequence:**

>RC222119 ORF sequence  
 Red=Cloning site Blue=ORF Green=Tags(s)

TTTTGTAATACGACTCACTATAGGGCGGCCGGAATTCGTCGACTGGATCCGGTACCGAGGAGATCTGCC  
 GCC**CGCATCGCC**

ATGGAGTCCACAGCCTACCTCTCAATTTGAGCCTGAAAGAAGAGGAAGGAAGAAGAGATTAGAGCC  
 GGGAACTAGAGGACGGCCCGGCAGACATGCAGAAAGTACGAATCTGCTCTGAGGGCGGATGGGTACCGGC  
 CCTATTTGATGAGGTGGCCATATATTTTCCGATGAGGAATGGGAAGTTTGGACGGAGCAACAAAAGGCC  
 CTCTACCGGGAAGTCATGAGGATGAATTATGAACTGTCTGTCCCTGGAATTCCTATTCCCTAAGCCAG  
 ACATGATCACCCGTTTGGAAAGGGGAGGAGGAGTCTCAGAATTCTGACGAGTGGCAGCTCCAAGGAGGCAC  
 CTCTGCAGAAAATGAAGAATCTGACGTAAGCCTCCAGACTGGCCAAACCAATGAATGCTACCTCCAG  
 TTTCTCAGCCTCAGCACTTTGACAGCTTTGGCCTCCGCTCGCTCGGGATATCACAGAGCTGCCCGAGT  
 GGAGTGAAGGGTACCCCTTCTACATGGCCATGGGCTTCCAGGGTATGACCTCTCGGCTGATGACATAGC  
 TGGGAAGTTTCACTTCAAGCCGGGCATGCGCCGAGTTACGACGCAGGGTCAAGCTGATGGTAGTGAA  
 TATGCTGAGAGTACCAACAACCTGCCAGGCTGCCAAGCAGTTTGGAGTATTGGAAAAAACGTTTCGAGACT  
 GCGCAAAGTGAAGCCACAGCTTCAAAACGCCACGCCATGCGGCGGGCATTCCGAGGCCCAAGAATGG  
 GAGGTTTCTCTGGTGGACCAGCGTGTGGCCGAATATGTGAGATACATGCAGGCCAAAGGGGACCCATC  
 ACCCGGGAGGCGATGCAGCTGAAAGCTCTGAAATCGCCAGGAAATGAACATCCAGAGAAAGGGTTCA  
 AGGCAAGCTTGGGTTGGTGTGGAAGAATGATGAGAAGGTATGACCTGTCTCTGAGGCATAAAGTGCCCGT  
 GCGCCAGCACCTGCCGGAAGACCTGACTGAGAACTCGTCACTTACCAGCGCAGTGTCTGGCTCTGCGC  
 AGGGCGCATGACTATGAGGTAGCTCAGATGGGGAATGCAGATGAGACGCCCATTTGTTTAGAGGTGCCAT  
 CACGGTAACTGTTGATAACCAAGGCGAAAAGCCTGTCTTGGTCAAGACACCAGCAGGGAAAAAATGAA  
 AATCACAGCAATGCTTGGTGTCTTGGCTGATGGGAGGAAGTACCACCGTACATCATTTTGGAGGGAACA  
 TATATCCCCCGGGAAGTTTCCAGTGGGATGGAATTCGCTGCCACCGGTATGGGTGGATGACTGAAG  
 ACTTGTGACAGGACTGGTTGGAAGTGGTGTGGAGACGGAGGACAGGAGCAGTGCCCAAGCAGCGAGGGAT  
 GCTGATCTTGAATGGCTTCCGGGCCATGCCACAGATTCCGTGAAGAACTCCATGGAAAGCATGAACACT  
 GACATGGTATCATCCCAGGGGCTGACCTCACAGCTTCAAGTGTGGTGTGCTGCTGCTACAAGCCAC  
 TGAATGACAGTGTGCGGGCCAGTACTCAACTGGCTTCTGGCTGGGAACCTGGCGCTGAGCCCAACCGG  
 GAATGCTAAGAAGCCACCCTGGCCTCTTCTGGAGTGGGTATGGTTCGCGTGGATAGCATCTCAAGT  
 GAGTCCATCGTCAAGGGTTCAAGAAGTCCATATCTCCAGCAACTTGGAGGAGGAAGACGATGTCTGT  
 GGGAAATCGAGAGTGAAGTGGCAGGAGGAGGAGAACCAAAAAGATTGTGACACCGAAAGCATGGCTGA  
 GAGCAAC

**ACGCGT**ACGCGGCCGCTCGAGCAGAACTCATCTCAGAAGAGGATCTGGCAGCAATGATATCCTGGATT  
 ACAAGGATGACGACGATAAGGTTTAA

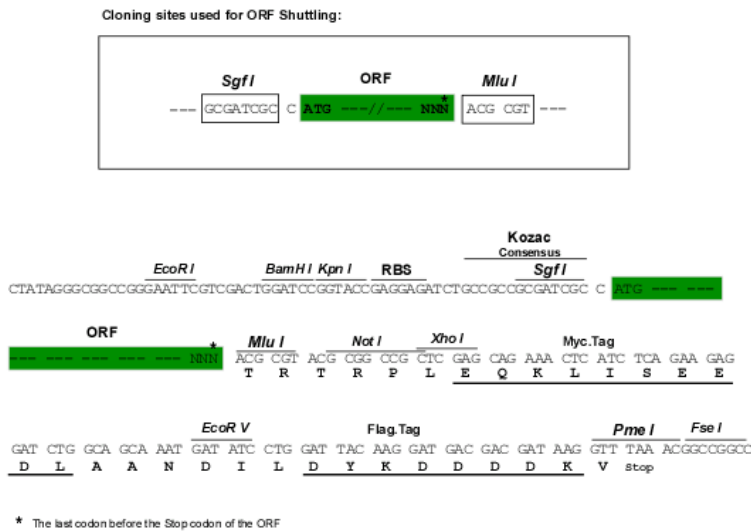
**Protein Sequence:**

>RC222119 protein sequence  
 Red=Cloning site Green=Tags(s)

MESTAYPLNLSLKEEEEEIIQSRELEDGPADMQKVRICSEGGWVPALFDEVAIYFSD EEWVLETEQQKAL  
 LYREVMRMNYETVLSLEFPFKPDMITRLEGEESQNSDEWQLQGGTSAENESDVKPPDWPMPNATSQ  
 FPQPQHDFDFGLRPRDITELPEWSEGYPFYAMGFPGYDLSADDIAGKFQFSRGMRRSYDAGFKLMVVE  
 YAESTNQCQAAKQFVLEKQNRDWRKVKPQLQNAHAMRRAFRGPKNRGRFALVDQRVAEYVRYMQAKGDP  
 I TREAMQLKALEIAQEMNIPKGFKASLWCCRMMRRYDLSLRHKVPVPQHLPEDL TEKLVTYQRSVLALR  
 RAHDYEVAQMGNADETPICLEVPSRVTVDNQGEKPVLVKTPGRELKITAMLGVLADGRKLPPYIILRGT  
 YIPPGKFPSPGMEIRCHRYGWMTEMLMQDWLEVVWRRRTGAVPKQRGMLILNGFRGHATDSVKNSMESMNT  
 DMVIIPGGLTSQLQVLDVVVYKPLNDSVRAQYSNLLAGNLALSPTGNAKKPPLGLFLEWVMAVWNSISS  
 ESIVQGFKKCHISSNLEEEEDDLWEIESELPGGEPKDCDTE SMAESN

**TRTRPLEQKLI**SEEDLAANDILDYKDDDDKV

Chromatograms: [https://cdn.origene.com/chromatograms/mk6452\\_f11.zip](https://cdn.origene.com/chromatograms/mk6452_f11.zip)  
 Restriction Sites: SgfI-MluI  
 Cloning Scheme:



ACCN: NM\_017542  
 ORF Size: 1827 bp

OTI Disclaimer: The molecular sequence of this clone aligns with the gene accession number as a point of reference only. However, individual transcript sequences of the same gene can differ through naturally occurring variations (e.g. polymorphisms), each with its own valid existence. This clone is substantially in agreement with the reference, but a complete review of all prevailing variants is recommended prior to use. [More info](#)

OTI Annotation: This clone was engineered to express the complete ORF with an expression tag. Expression varies depending on the nature of the gene.

Components: The ORF clone is ion-exchange column purified and shipped in a 2D barcoded Matrix tube containing 10ug of transfection-ready, dried plasmid DNA (reconstitute with 100 ul of water).

- Reconstitution Method:
1. Centrifuge at 5,000xg for 5min.
  2. Carefully open the tube and add 100ul of sterile water to dissolve the DNA.
  3. Close the tube and incubate for 10 minutes at room temperature.
  4. Briefly vortex the tube and then do a quick spin (less than 5000xg) to concentrate the liquid at the bottom.
  5. Store the suspended plasmid at -20°C. The DNA is stable for at least one year from date of shipping when stored at -20°C.

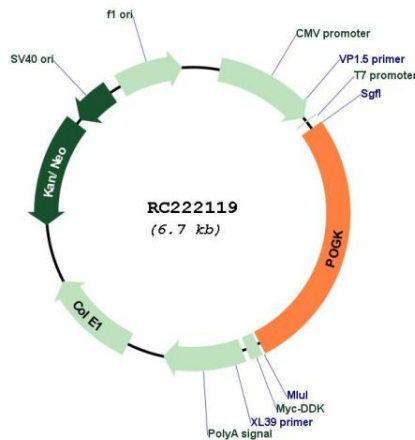
Note: Plasmids are not sterile. For experiments where strict sterility is required, filtration with 0.22um filter is required.

RefSeq: [NM\\_017542.5](#)  
 RefSeq Size: 3852 bp

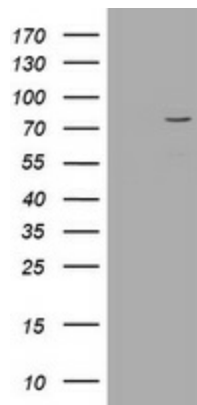
**RefSeq ORF:** 1830 bp  
**Locus ID:** 57645  
**UniProt ID:** [Q9P215](#)  
**Cytogenetics:** 1q24.1  
**Domains:** KRAB, DDE, CENPB  
**Protein Families:** Transcription Factors  
**MW:** 69.4 kDa

**Gene Summary:** The exact function of the protein encoded by this gene is not known. However, this gene product contains a KRAB domain (which is involved in protein-protein interactions) at the N-terminus, and a transposase domain at the C-terminus, suggesting that it may belong to the family of DNA-mediated transposons in human. [provided by RefSeq, Jul 2008]

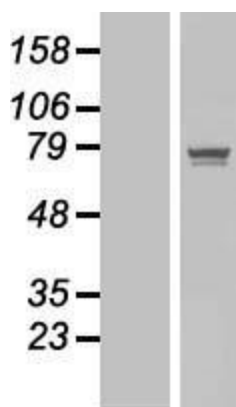
### Product images:



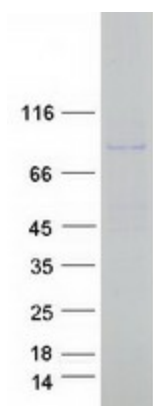
Circular map for RC222119



HEK293T cells were transfected with the pCMV6-ENTRY control (Cat# [PS100001], Left lane) or pCMV6-ENTRY POGK (Cat# RC222119, Right lane) cDNA for 48 hrs and lysed. Equivalent amounts of cell lysates (5 ug per lane) were separated by SDS-PAGE and immunoblotted with anti-POGK (Cat# [TA505607]). Positive lysates [LY413730] (100ug) and [LC413730] (20ug) can be purchased separately from OriGene.



Western blot validation of overexpression lysate (Cat# [LY413730]) using anti-DDK antibody (Cat# [TA50011-100]). Left: Cell lysates from untransfected HEK293T cells; Right: Cell lysates from HEK293T cells transfected with RC222119 using transfection reagent MegaTran 2.0 (Cat# [TT210002]).



Coomassie blue staining of purified POGK protein (Cat# [TP322119]). The protein was produced from HEK293T cells transfected with POGK cDNA clone (Cat# RC222119) using MegaTran 2.0 (Cat# [TT210002]).