

## Product datasheet for **RC222118**

### MED1 (NM\_004774) Human Tagged ORF Clone

#### Product data:

Product Type:	Expression Plasmids
Product Name:	MED1 (NM_004774) Human Tagged ORF Clone
Tag:	Myc-DDK
Symbol:	MED1
Synonyms:	CRSP1; CRSP200; DRIP205; DRIP230; PBP; PPARBP; PPARGBP; RB18A; TRAP220; TRIP2
Mammalian Cell Selection:	Neomycin
Vector:	pCMV6-Entry (PS100001)
E. coli Selection:	Kanamycin (25 ug/mL)
ORF Nucleotide Sequence:	>RC222118 representing NM_004774 Red=Cloning site Blue=ORF Green=Tags(s)

TTTTGTAATACGACTCACTATAGGGCGGCCGGAATTCGTCGACTGGATCCGGTACCGAGGAGATCTGCC  
GCC**CGATCGCC**

ATGAAAGCTCAGGGGAAACCGAGGAGTCAGAAAAGCTGAGTAAGATGAGTTCTCTCCTGGAACGGCTCC  
ATGCAAAATTTAACCAAAATAGACCCTGGAGTGAAACCATTAAGCTTGTGCGTCAAGTCATGGAGAAGAG  
GGTTGTGATGAGTTCTGGAGGGCATCAACATTTGGTCAGCTGTTGGAGACATTGCAGAAGGCTCTCAA  
GTAACATCTTTACCAGCAATGACTGATCGTTTGGAGTCCATAGCAAGACAGAATGGACTGGGCTCTCATC  
TCAGTGCCAGTGGCACTGAATGTTACATCACGTCAGATATGTTCTATGTGGAAGTGCAGTTAGATCCTGC  
AGGACAGCTTTGTGATGTAAAAGTGGCTACCATGGGGAGAATCCTGTGAGCTGTCCGGAGCTTGTACAG  
CAGCTAAGGGAAAAAATTTTGTGAAATTTCTAAGCACCTTAAGGGCCTTGTTAATCTGTATAACCTTC  
CAGGGGACAACAACTGAAGACTAAAATGTACTTGGCTCTCCAATCCTTAGAACAAGATCTTTCTAAAAT  
GGCAATTATGACTGAAAGCAACTAATGCTGGTCCCTTGGAATAAGATCTTCATGGAAGTGTGGCTAT  
CTCACACCAAGGAGTGGGGTCAATTAATGAACCTGAAGTACTATGTCTCTCTTCTGACCTACTGGATG  
ACAAGACTGCATCTCCATCATTTTGCATGAGAATAATGTTTCTCGATCTTTGGGCATGAATGCATCAGT  
GACAATTAAGGAACATCTGCTGTGTACAACTCCCAATTGCACCATAATTATGGGGTCACATCCAGTT  
GACAATAATGGACCCCTCTCTCTCAATCACCAGTGCCAACAGTGTGATCTCTCGCTGTTTCT  
TCTTGAATTTCCCGAGCAATCCAGTATCTAGAGCATTGTTTCAGAACTGCAGAAGTGCACAGGAAT  
TCCATTGTTTGAACCTAACCACTTATGCACCCCTGTATGAACTGATCACTCAGTTTGAGCTATCAAAG  
GACCCGACCCCATACCTTTGAATCACACATGAGATTTTATGCTGCTCTTCTGGTGCAGCAGCTGCT  
ATTTCTCAACAAGGATGCTCCTCTCCAGATGGCCGAAGTCTACAGGGAACCCTTGTTAGCAAAATCAC  
CTTTCAGACCCCTGGCCGAGTTCCTCTTATCCTAAATCTGATCAGACACCAAGTGGCCTATAACACCCTC  
ATTGGAAGCTGTGCAAAAGAATCTTCTGAAAGAAGATTCTCCTGGGCTTCTCAATTTGAAGTGTGC  
CTCTCTCAGAGTCTCGTTTCAGCGTATCTTTTCAGCACCTGTGAATGACTCCCTGGTGTGTGGTAA  
GGATGTGCAGGACTCAACACATGTGAGCTGAAACTCTACAAAGGCTGTCCGATGCACTGATCTGCACA



[View online »](#)

GATGACTTCATTGCCAAAGTTGTTCAAAGATGTATGTCCATCCCTGTGACGATGAGGGCTATTCGGAGGA  
AAGCTGAAACCATTCAAGCCGACACCCAGCACTGTCCCTCATTGCAGAGACAGTTGAAGACATGGTGAA  
AAAGAACCTGCCCGGCTAGCAGCCAGGGTATGGCATGACCACAGGCAACAACCCAATGAGTGGTACC  
ACTACCAACCAACACCTTTCCGGGGGTCCCATTACCACCTTGTTAATATGAGCATGAGCATCAAAG  
ATCGGCATGAGTCGGTGGGCCATGGGGAGGACTTCAGCAAGGTGTCTCAGAACCAATCTTACCAGTTT  
GTTGCAAAATCACAGGGAACGGGGGTCTACCATTGGCTCGAGTCGACCCCTCTCATCACACCGCGCA  
CCAGGATTTCTCAACCCTTTATGGAAGCAGCCCTTTAGAAAGGCAGAACTCCTCTCCGGCTCACCCCG  
CATGGAATATGCTCGGGGAGCAACAAGACCAAGAAAAAGAGTATCAAGATTACCACCTGAGAAACCA  
AAGCACCAGACTGAAGATGACTTTCAGAGGGAGCTATTTTCAATGGATGTTGACTCACAGAACCTATCT  
TTGATGTCAACATGACAGCTGACACGCTGGATACGCCACACATCACTCCAGCTCCAAGCCAGTGTAGCAC  
TCCCCAACAACTTACCACAACCAGTACCTCACCCCAACCCAGTATTCAAAGGATGGTCCGACTATCC  
AGTTCAGACAGCATTGGCCAGATGTAAGTACATCCTTTCAGACATTGCAGAAGAAGCTTCTAACTTC  
CCAGCACTAGTGATGATTGCCAGCCATTGGCACCCCTCTCGAGATTCTCAAGCTCTGGGCATTTCTCA  
GAGTACCCTGTTGACTCTGATGCTTTCAAATAACAATAATGAAAATCCATACACTGATCCAGCTGAT  
CTTATTGCAGATGCTGCTGGAAGCCCAGTAGTACTCTCCTACCAATCATTTTTTTCATGATGGAGTAG  
ATTTCAATCCTGATTTATTGAACAGCCAGAGCCAAAGTGGTTTTGGAGAAGAATATTTTGTGAAAGCAG  
CCAAAGTGGGGATAATGATGATTTCAAAGGATTTGCATCTCAGGCACTAAATACTTTGGGGTGCCAATG  
CTTGGAGGTGATAATGGGGAGACCAAGTTAAGGGCAATAACCAAGCCGACACAGTTGATTTCAAGTATTA  
TTTCAGTAGCCGCAAGCTTTAGCTCCTGCAGATCTTATGGAGCATCACAGTGGTAGTCAGGGTCTTT  
ACTGACCACTGGGACTTAGGGAAAGAAAAGACTCAAAGAGGGTAAAGGAAGGCAATGGCACCAGTAAT  
AGTACTCTCGGGCCCGGATTAGACAGCAAACCAGGGAAGCGCAGTCGGACCCCTTCTAATGATGGGA  
AAAGCAAAGATAAGCCTCAAAGCGGAAGAAGGCAGACACTGAGGGAAAGTCTCCATCTCATAGTTCTTC  
TAACAGACCTTTTACCCACCTACCAGTACAGGTGGATCTAAATCGCCAGGCAGTCAGGAAGATCTCAG  
ACTCCCCAGGTGTTGCCACACCACCCATTCCCAAAATCACTATTCAGATTCTAAGGGAACAGTATGG  
TGGGAAGCCTTCTCTCACAGTCAAGTATACCAGCAGTGGTCTGTGTCTTCTCAGGCAGCAAAAGCCA  
CCATAGCCATTCTTCTCCTCTTCTCATCTGCTTCCACCTCAGGGAAGATGAAAAGCAGTAAATCAGAA  
GGTTCATCAAGTCCAAGTTAAGTAGCAGTATGTATTCTAGCCAGGGTCTTCTGGATCTAGCCAGTCCA  
AAAATTCATCCCAGTCTGGGGGAAGCCAGGCTCTCTCCATAACCAAGCATGGACTGAGCAGTGGCTC  
TAGCAGCACCAAGATGAAACCTCAAGGAAAGCCATCATCACTTATGAATCCTTCTTAAGTAAACCAAC  
ATATCCCCTTCTCATTCAAGCCACCTGGAGGCTCTGACAAGCTTGCCTCTCAAATGAAGCCTGTCTCTG  
GAACTCCTCCATCCTCTAAAGCCAAGTCCCTATCAGTTCAGGTTCTGGTGGTCTCATATGTCTGGAAC  
TAGTTCAGCTCTGGCATGAAGTCATCTTCAGGGTTAGGATCCTCAGGCTCGTTGTCCCAGAAAACCTCC  
CCATCATCTAATCCTGTACGGCATCTTCTCCTCCTTTTCTCAAGTGGCTCTTCCATGTCATCCTCTC  
AGAACCAGCATGGGAGTTCTAAAGGAAAATCTCCCAGCAGAAACAAGAAGCCGCTCTTGACAGCTGTCAT  
AGATAAAGTGAAGCATGGGGTGTCAACAGTGGCCCTGGGGTGAAGACCCTGGACGGCCAGATGGGG  
GTGAGCACAAATCTTCCAGCCATCCTATGTCTCCAAACATAACATGTCAGGAGGAGAGTTTCAGGGCA  
AGCCTGAGAAAAGTGATAAAGACAAATCAAAGTTTCCACCTCCGGGAGTTCAGTGGATTCTTCTAAGAA  
GACCTCAGAGTCAAAAAATGTGGGGAGCACAGGTGTGGCAAAAATATCATCAGTAAGCATGATGGAGGC  
TCCCCTAGCATTAAAGCCAAGTGACTTTGCAGAAACCTGGGGAAGTGTGGAGAAGGGCTTAGGCCTC  
AAATGGCTTCTTCTAAAACTATGGCTCTCCACTCATCAGTGGTTCCTCCTCAAAGCATGAGCGTGGCTC  
TCCCAGCCATAGTAAGTACCAGCATATACCCCCAGAATCTGGACAGTAAAAGTGAAGTCAAGGCTCCTCC  
ATAGCAGAGAAATCTTATCAGAAATAGTCCAGCTCAGACGATGGTATCCGACCCTTCCAGAATACAGCA  
CAGAGAAACATAAGAAGCACAAAAGGAAAAGAAAGTAAAAGACAAAGATAGGGACCGAGACCCGGGA  
CAAAGACCGAGACAAGAAAAATCTCATAGCATCAAGCCAGAGAGTTGGTCCAAATCACCCATCTCTTCA  
GACCAGTCTTGTCTATGACAAGTAACACAATCTTATCTGCAGACAGACCCTCAAGGCTCAGCCAGACT  
TTATGATTGGGGAGGAAGATGATGATCTTATGGATGTGGCCCTGATTGGGAAT

ACGCGTACGCGGCCGCTCGAGCAGAACTCATCTCAGAAGAGGATCTGGCAGCAAATGATATCCTGGATT  
ACAAGGATGACGACGATAAGGTTTAA

**Protein Sequence:** >RC222118 representing NM\_004774  
 Red=Cloning site Green=Tags(s)

MKAQGETEESEKLSKMSSLLERLHAKFNQNPWSETIKLVRQVMEKRVVMSSGGHQHLVSCLETLOKALK  
 VTSLPAMTDRLESIARQNLGSHLSASGTECYITSDMFYVEVQLDPAGQLCDVKVAHHGENPVSCPELVQ  
 QLREKNFDEF SKHLKGLVNLNLPDGNLKTMYLALQSLEQDL SKMAIMYWKATNAGPLDKILHGSVGY  
 LTPRSGGHLMLNKYYVSPDLLDDKTASPIILHENNVSRSLGMNASVTIEGTSAVYKLP IAPLIMGSHPV  
 DNKWTPSFSSITSANSVDLPACFFLKFPQPIPVSRAFVQKLNCTGIPLFETQPTYAPLYELITQFELSK  
 DDPDIPLNHNMRFYAALPGQHCYFLNKDAPLPDGRSLQGTLVSKITFQHPGRVPLILNLIRHQVAYNTL  
 IGSCVKRTILKEDSPGLLQFEVCPLSESRFSVSFQHPVNDLVCVVMVDVQDSTHVSKLYKGLSDALICT  
 DDFIAKVQRCMSIPVTMRAIRRAETIQADTPALSLIAETVEDMVKKNLPPASSPGYGMTTGNPNMSGT  
 TTPTNTFPGGPITTLFNMSMSIKDRHESVGHGEDFSKVSQNPIL TSL LQITGNGGSTIGSSPTPPHHTPP  
 PVSSMAGNTKNHPMLMNLKDNPAQDFSTLYGSSPLERQNSSSGSPRMEICSGSNKTKKKKSSRLPPEKP  
 KHQTEDDFQRELF SMDVDSQNP IFDVNMTADTLDTPHITPAPSQCSTPPTTYPQPVHPQPSIQRMVRLS  
 SSSSIGPDVTDILSDIAEEASKLPSTSDDCPAIGTPLRDSSSSGHSQSTLFDSDVFQTNNNENPYTDPAD  
 LIADAAGSPSSDPTNHFFHDGVDNFNDLLNSQSQSGFGEEYFDESSQSGDNDDFKGFASQALNTLGVPM  
 LGGDNGETKFKGNQADTVDFSII SVAGKALAPADLMEHHSQSGLLTTGDLGKEKTQKRKVEGNGTNS  
 STLSGPGLD SKPKGRSRTPSNDGKSKDKPKPKKADTEGKSPSHSSSNRPFPTPTSTGGSKSPGSAGRSQ  
 TTPGVATPPPIKTIQIPKGTVMVGKPSHSSQYTS SSGVSSSSGSKSHSHSSSSSSSASTSGKMKSSKSE  
 GSSSSKLSSSMYSSQSSGSSQSKNSSQSGGKPGSSPITKHGLSSGSSSTKMKPQKPKSSLMNPSL SKPN  
 ISPSHSRPPGGSDKLASPMKVPVPGTPSSAKASPISSGSGSHMSGTSSSSGMKSSSGLGSSGLSQKTP  
 PSSNSTASSSSFSSSGSMSSSQNHGSSKSKGKSPSRNKKPSL TAVIDKDKHGVTSGPGGEDPLDGQMG  
 VSTNSSHPMSSKHNMSSGGEFQKREKSDKDKSVSTSGSSVDSSKKTSESKNVGSTGVAKIIISKHDGG  
 SPSIKAKAVTLQKPGESSGELRPQMASSKNYGSPLISGSTPKHERGSPSHSKSPAYTPQNLDSESESGSS  
 IAEKSYQNSPSSDDGIRPLPEYSTEKHKHKKKKEKKVKDKDRDRDRDKDRDKKSHSIKPESWSKSPISS  
 DQSLSMTSNTILSADRP SRLSPDFMIGEEDDLMDVALIGN

TRTRPLEQKLISEEDLAANDILDYKDDDDKV

**Chromatograms:** [https://cdn.origene.com/chromatograms/mg3781\\_h09.zip](https://cdn.origene.com/chromatograms/mg3781_h09.zip)

**Restriction Sites:** Sgfl-MluI

**Cloning Scheme:**

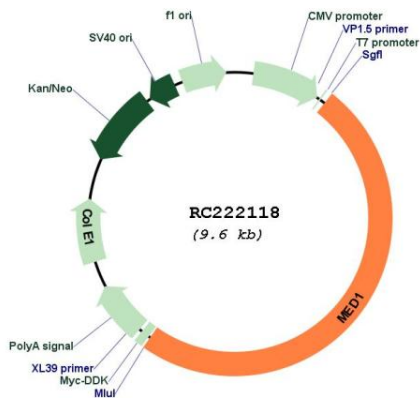


**ACCN:** NM\_004774

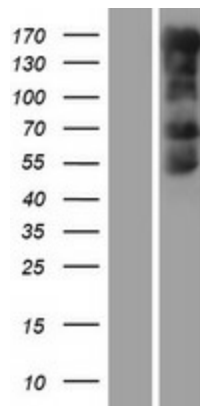
<b>ORF Size:</b>	4743 bp
<b>OTI Disclaimer:</b>	<p>Due to the inherent nature of this plasmid, standard methods to replicate additional amounts of DNA in E. coli are highly likely to result in mutations and/or rearrangements. Therefore, OriGene does not guarantee the capability to replicate this plasmid DNA. Additional amounts of DNA can be purchased from OriGene with batch-specific, full-sequence verification at a reduced cost. Please contact our customer care team at <a href="mailto:custsupport@origene.com">custsupport@origene.com</a> or by calling 301.340.3188 option 3 for pricing and delivery.</p> <p>The molecular sequence of this clone aligns with the gene accession number as a point of reference only. However, individual transcript sequences of the same gene can differ through naturally occurring variations (e.g. polymorphisms), each with its own valid existence. This clone is substantially in agreement with the reference, but a complete review of all prevailing variants is recommended prior to use. <a href="#">More info</a></p>
<b>OTI Annotation:</b>	This clone was engineered to express the complete ORF with an expression tag. Expression varies depending on the nature of the gene.
<b>Components:</b>	The ORF clone is ion-exchange column purified and shipped in a 2D barcoded Matrix tube containing 10ug of transfection-ready, dried plasmid DNA (reconstitute with 100 ul of water).
<b>Reconstitution Method:</b>	<ol style="list-style-type: none"> <li>1. Centrifuge at 5,000xg for 5min.</li> <li>2. Carefully open the tube and add 100ul of sterile water to dissolve the DNA.</li> <li>3. Close the tube and incubate for 10 minutes at room temperature.</li> <li>4. Briefly vortex the tube and then do a quick spin (less than 5000xg) to concentrate the liquid at the bottom.</li> <li>5. Store the suspended plasmid at -20°C. The DNA is stable for at least one year from date of shipping when stored at -20°C.</li> </ol>
<b>RefSeq:</b>	<a href="#">NM_004774.4</a>
<b>RefSeq Size:</b>	5809 bp
<b>RefSeq ORF:</b>	4746 bp
<b>Locus ID:</b>	5469
<b>UniProt ID:</b>	<a href="#">Q15648</a>
<b>Cytogenetics:</b>	17q12
<b>Protein Families:</b>	Druggable Genome, Nuclear Hormone Receptor, Transcription Factors
<b>MW:</b>	168.3 kDa

**Gene Summary:**

The activation of gene transcription is a multistep process that is triggered by factors that recognize transcriptional enhancer sites in DNA. These factors work with co-activators to direct transcriptional initiation by the RNA polymerase II apparatus. The protein encoded by this gene is a subunit of the CRSP (cofactor required for SP1 activation) complex, which, along with TFIID, is required for efficient activation by SP1. This protein is also a component of other multisubunit complexes e.g. thyroid hormone receptor-(TR-) associated proteins which interact with TR and facilitate TR function on DNA templates in conjunction with initiation factors and cofactors. It also regulates p53-dependent apoptosis and it is essential for adipogenesis. This protein is known to have the ability to self-oligomerize. [provided by RefSeq, Jul 2008]

**Product images:**


Circular map for RC222118



Western blot validation of overexpression lysate (Cat# [LY417755]) using anti-DDK antibody (Cat# [TA50011-100]). Left: Cell lysates from untransfected HEK293T cells; Right: Cell lysates from HEK293T cells transfected with RC222118 using transfection reagent MegaTran 2.0 (Cat# [TT210002]).