

Product datasheet for RC222117

PPAPDC1B (PLPP5) (NM_001102560) Human Tagged ORF Clone

Product data:

Product Type: Expression Plasmids
Product Name: PPAPDC1B (PLPP5) (NM_001102560) Human Tagged ORF Clone
Tag: Myc-DDK
Symbol: PPAPDC1B
Synonyms: DPPL1; HTPAP; PPAPDC1B
Mammalian Cell Selection: Neomycin
Vector: pCMV6-Entry (PS100001)
E. coli Selection: Kanamycin (25 ug/mL)
ORF Nucleotide Sequence: >RC222117 representing NM_001102560
 Red=Cloning site Blue=ORF Green=Tags(s)

TTTTGTAATACGACTCACTATAGGGCGGCCGGAATTCGTCGACTGGATCCGGTACCGAGGAGATCTGCC
 GCC**CGATCGCC**

ATGGGGAAGGCGGCGCGGCGTGGCCTTTGGGGCCGAAGTGGGCGTGCGGCTCGCGCTGTTTCGGGCCCT
 TCCTGGTGACGGAGCTGCTCCCCCGTTCCAGAGACTCATCCAGCCGGAGGAGATGTGGCTCTACCGGAA
 CCCCTACGTGGAGGCGGAGTATTTCCCCACCAAGCCGATGTTTGTATTGCATTTCTCTCCACTGTCT
 CTGATCTTCTGGCCAAATTTCTCAAGAAGGCAGACACAAGAGACAGCAGACAAGCCTGCCTGGCTGCCA
 GCCTTGCCCTGGCTCTGAATGGCGTCTTACCAACACAATAAACTGATCGTAGGGAGGCCACGCCCAGA
 TTTCTTCTACCGCTGCTCCCTGATGGGTAGCCATTCTGACTTGATGTGTACAGGGGATAAGGACGTG
 GTGAATGAGGGCCGAAAGAGCTTCCCCAGTGGACATTCTTCTGTATGAATATCATATGGACTCTACCT
 ATGCTTGTTTTACATCATTGAATTTAACCTAGAAAGC

ACGCGTACGCGGCCGCTCGAGCAGAACTCATCTCAGAAGAGGATCTGGCAGCAATGATATCCTGGATT
 ACAAGGATGACGACGATAAGGTTTAA

Protein Sequence: >RC222117 representing NM_001102560
 Red=Cloning site Green=Tags(s)

MGKAAAFAVGAIEVGVRLALFAAFLVTELLPPFQRLIQPEEMWL YRNPYVEAEYFPTKPMFVIAFLSPLS
 LIFLAKFLKKADTRDSRQACLAASLALALNGVFTNTIKLIVGRPRPDDFFYRCFPDGLAHSMLMCTGDKDV
 VNEGRKSFPSGHSSCMNIWTLPLYACFHIIIEFNLES

TRTRPLEQKLISEEDLAANDILDYKDDDDKV

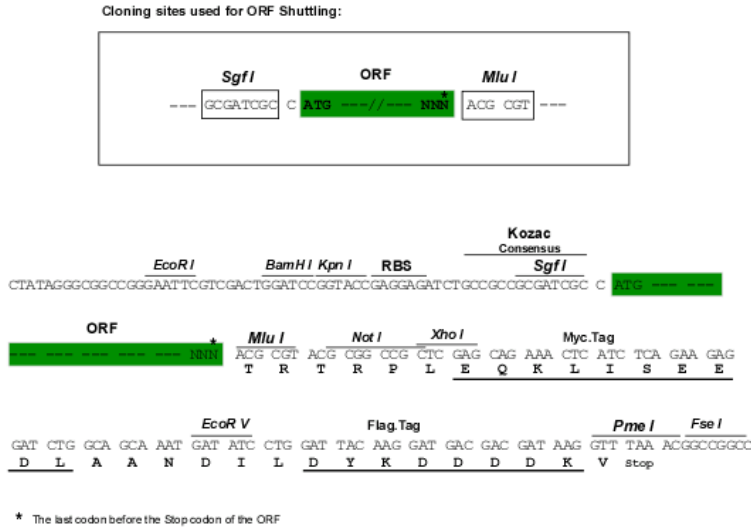
Chromatograms: https://cdn.origene.com/chromatograms/ja1461_d11.zip



[View online »](#)

Restriction Sites: SgfI-MluI

Cloning Scheme:



ACCN: NM_001102560

ORF Size: 528 bp

OTI Disclaimer: The molecular sequence of this clone aligns with the gene accession number as a point of reference only. However, individual transcript sequences of the same gene can differ through naturally occurring variations (e.g. polymorphisms), each with its own valid existence. This clone is substantially in agreement with the reference, but a complete review of all prevailing variants is recommended prior to use. [More info](#)

OTI Annotation: This clone was engineered to express the complete ORF with an expression tag. Expression varies depending on the nature of the gene.

Components: The ORF clone is ion-exchange column purified and shipped in a 2D barcoded Matrix tube containing 10ug of transfection-ready, dried plasmid DNA (reconstitute with 100 ul of water).

Reconstitution Method:

1. Centrifuge at 5,000xg for 5min.
2. Carefully open the tube and add 100ul of sterile water to dissolve the DNA.
3. Close the tube and incubate for 10 minutes at room temperature.
4. Briefly vortex the tube and then do a quick spin (less than 5000xg) to concentrate the liquid at the bottom.
5. Store the suspended plasmid at -20°C. The DNA is stable for at least one year from date of shipping when stored at -20°C.

RefSeq: [NM_001102560.2](#)

RefSeq Size: 776 bp

RefSeq ORF: 531 bp

Locus ID: 84513

UniProt ID: [Q8NEB5](#)

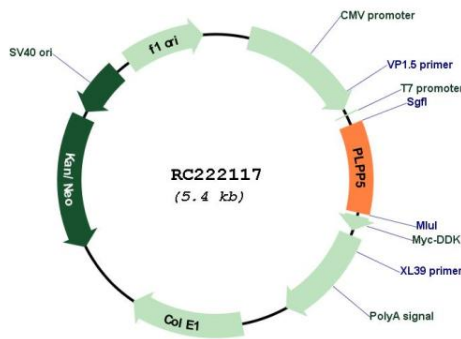
Cytogenetics: 8p11.23

Protein Families: Transmembrane

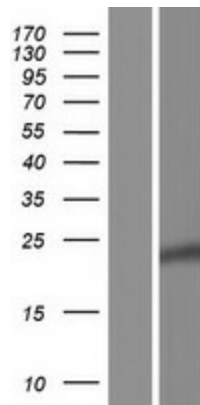
MW: 19.5 kDa

Gene Summary: Displays magnesium-independent phosphatidate phosphatase activity in vitro. Catalyzes the conversion of phosphatidic acid to diacylglycerol. May be a metastatic suppressor for hepatocellular carcinoma.[UniProtKB/Swiss-Prot Function]

Product images:



Circular map for RC222117



Western blot validation of overexpression lysate (Cat# [LY420157]) using anti-DDK antibody (Cat# [TA50011-100]). Left: Cell lysates from untransfected HEK293T cells; Right: Cell lysates from HEK293T cells transfected with RC222117 using transfection reagent MegaTran 2.0 (Cat# [TT210002]).