

## Product datasheet for **RC222116**

### SLC22A13 (NM\_004256) Human Tagged ORF Clone

#### Product data:

Product Type:	Expression Plasmids
Product Name:	SLC22A13 (NM_004256) Human Tagged ORF Clone
Tag:	Myc-DDK
Symbol:	SLC22A13
Synonyms:	OAT10; OCTL1; OCTL3; ORCTL-3; ORCTL3
Mammalian Cell Selection:	Neomycin
Vector:	pCMV6-Entry (PS100001)
E. coli Selection:	Kanamycin (25 ug/mL)



[View online »](#)

**ORF Nucleotide Sequence:**

>RC222116 representing NM\_004256  
 Red=Cloning site Blue=ORF Green=Tags(s)

TTTTGTAATACGACTCACTATAGGGCGGCCGGAATTCGTCGACTGGATCCGGTACCGAGGAGATCTGCC  
 GCC**GCGATCGCC**

ATGGCTCAGTTTGTCCAGGTCCTGGCTGAAATAGGTGACTTTGGTCGCTTCCAGATACAGCTATTGATCC  
 TGCTGTGTGTTCTCAACTTCTGTCTCCCTTCTACTTTTTGCCCATGTCTTCATGGTCCTAGATGAGCC  
 CCACCACTGTGCAGTGGCTTGGGTGAAGAACCACACTTTCAACCTGAGTGCTGCTGAACAGCTGGTACTG  
 AGCGTGCCCTGGACACTGCAGGTACCCAGAGCCCTGCCTCATGTTCCGGCCACCCCCGCAATGCCA  
 GCCTGCAGGACATCCTCAGCCACCGCTTCAATGAGACGCAGCCTTGTGATATGGGCTGGGAATATCTGA  
 GAACAGGCTCCCATCCCTGAAGAATGAGTTCAACCTGGTTTGTGATCGGAAGCACCTGAAGGACACCACA  
 CAGTCAGTGTTCATGGCTGGCTCCTTGTGGCACCTCATGTTGGGCCCTCTGCGACCGGATTGGCC  
 GCAAGGCCACAATCCTGGCGCAGCTGCTCCTTACCCTCATCGGCCTGGCCACAGCTTTTGTGCCAG  
 CTTTGAGCTCTACATGGCCCTGCGCTTTGCTGTGGCTACTGCCGTCGCTGGACTTAGCTTACGAAATGTC  
 ACCCTACTGACAGAATGGGTGGGGCCCTCATGGAGGACGCAGGCCGTGGTCTGGCCAGTGCAACTTCT  
 CCCTCGGGCAGATGGTGTCTTGGGGACTCGCCTACGGTTTCCGCAACTGGAGGCTCCTTCAGATACCGG  
 CACTGCGCCTGGCTTACTGCTCTTCTTCTACTTCTGGGCTCTGCCAGAATCTGCACGTTGGCTCCTGACC  
 CGTGGGAGGATGGACGAGGCGATACAATGATCCAGAAGCGGCCTCGGTCAATAGGCGGAAACTCTCCC  
 CGGAGCTCATGAACCAGCTGGTCCCAGAGAAGACAGGCCCTCAGGGAATGCCCTGGATCTGTTACAGACA  
 CCCCCAGCTCCGGAAGGTGACCTGATTATCTTGTGTCTGGTTTGGGACAGTCTGGGGTACTACGGC  
 CTGAGCCTCAAGTGGGGACTTCGGCTGGACGTCTATCTGACGCAGCTCATCTTTGGAGCTGTTGAGG  
 TGCTGCCCGCTGTTCCAGCATCTTCATGATGACAGAGTTTGGCCGCAAGTGGAGCCAGTTGGGGACCTT  
 GGCTTTGGGTGGCTGATGTGTATCATCATCTTCATCCAGCAGATCTGCCCGTGGTGGTCAACCATG  
 CTGGCTGTGGTGGGAAGATGGCCACAGCTGCTGCCTTACCATCTCCTATGTGACTCTGCCGAGCTTT  
 TCCCCACCATCTCCGGCAGACAGGCATGGGGCTGGTGGGCATCTTCTCACGGATCGGGGCATCTCAC  
 ACCACTTGTGATCCTGCTGGGAGAGTACCACGCTGCCCTCCCCATGCTCATCTACGGCAGCCTCCCCATC  
 GTGGCCGGCTGCTGTGCACCCTGCTGCCAGAGACGCATGGCCAGGGCCTGAAAGACACCCTCCAGGACC  
 TGGAGCTGGGGCCTCACCCACGGTCCCCAAATCAGTGCCTCAGAGAAGGAAACAGAGGCCAAGGGAAG  
 AACTCCAGCCCGGAGTGGCCTTGTGAGCAGCACATACTTC

**ACGCGT**ACGCGGCCGCTCGAGCAGAAACTCATCTCAGAAGAGGATCTGGCAGCAAATGATATCCTGGATT  
 ACAAGGATGACGACGATAAGGTTTAA

**Protein Sequence:**

>RC222116 representing NM\_004256  
 Red=Cloning site Green=Tags(s)

MAQFVQVLAIEIGDFGRFQIQLLILLCVLNFLSPFYFFAHVFMVLDDEPHCAVAWVKNHTFNL SAAEQVL  
 SVPLDTAGHPEPCLMFRPPANASLQDILSHRFNETQPCDMGWEYPENRPLSLKNEFNLVCDRKHLKDDT  
 QSVFMAGLLVGTLMFGPLCDRIGRKATILAQLLLFTLIGLATAFVPSFELYMALRFVAVATAVAGLSFSNV  
 TLLTEWVGPSWRTQAVVLAQCNFSLGQMVLAGLAYGFRNWRLQITGTAPGLLLFFYFVALPESARWLLT  
 RGRMDEAIQLIQKAASVNRKLSPELMNQLVPEKTGPSGNALDLFRHPQLRKVTLIIIFCVWFVDSLGYG  
 LSLQVGFGLDVYLTQLIFGAVEVPARCSSIFMMQRFGRKWSQLGTLVLGGLMCIIIIIFIPADLPVVVMT  
 LAVVGMATAAAFTISYVYSAELFPTILRQTMGLVGIFSRIGGILTPLVILLGEYHAALPMLIYGLPI  
 VAGLLCTLLPETHGQGLKDTLDLELGHPRSPKSPVSEKETEAKGRTSSPGVAFVSSTYF

**TR**TRPLEQKLI SEEDLAANDILDYKDDDDKV

**Chromatograms:**

[https://cdn.origene.com/chromatograms/mk8039\\_f04.zip](https://cdn.origene.com/chromatograms/mk8039_f04.zip)

**Restriction Sites:**

Sgfl-MluI

Cloning Scheme:



ACCN: NM\_004256

ORF Size: 1653 bp

OTI Disclaimer: The molecular sequence of this clone aligns with the gene accession number as a point of reference only. However, individual transcript sequences of the same gene can differ through naturally occurring variations (e.g. polymorphisms), each with its own valid existence. This clone is substantially in agreement with the reference, but a complete review of all prevailing variants is recommended prior to use. [More info](#)

OTI Annotation: This clone was engineered to express the complete ORF with an expression tag. Expression varies depending on the nature of the gene.

Components: The ORF clone is ion-exchange column purified and shipped in a 2D barcoded Matrix tube containing 10ug of transfection-ready, dried plasmid DNA (reconstitute with 100 ul of water).

- Reconstitution Method:
1. Centrifuge at 5,000xg for 5min.
  2. Carefully open the tube and add 100ul of sterile water to dissolve the DNA.
  3. Close the tube and incubate for 10 minutes at room temperature.
  4. Briefly vortex the tube and then do a quick spin (less than 5000xg) to concentrate the liquid at the bottom.
  5. Store the suspended plasmid at -20°C. The DNA is stable for at least one year from date of shipping when stored at -20°C.

RefSeq: [NM\\_004256.4](#)

RefSeq Size: 2527 bp

RefSeq ORF: 1656 bp

Locus ID: 9390

UniProt ID: [Q9Y226](#)

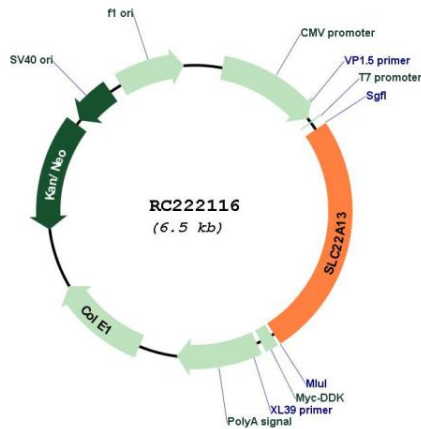
**Cytogenetics:** 3p22.2

**Protein Families:** Transmembrane

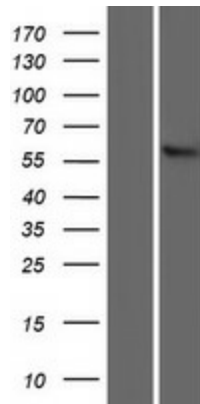
**MW:** 60.7 kDa

**Gene Summary:** This gene encodes a member of the organic-cation transporter family. It is located in a gene cluster with another member of the family, organic cation transporter like 4. The encoded protein is a transmembrane protein involved in the transport of small molecules. This protein can function to mediate urate uptake and is a high affinity nicotinate exchanger in the kidneys and the intestine. [provided by RefSeq, Sep 2008]

**Product images:**



Circular map for RC222116



Western blot validation of overexpression lysate (Cat# [LY418110]) using anti-DDK antibody (Cat# [TA50011-100]). Left: Cell lysates from untransfected HEK293T cells; Right: Cell lysates from HEK293T cells transfected with RC222116 using transfection reagent MegaTran 2.0 (Cat# [TT210002]).