

Product datasheet for RC222115

CALML6 (NM_138705) Human Tagged ORF Clone

Product data:

Product Type: Expression Plasmids
Product Name: CALML6 (NM_138705) Human Tagged ORF Clone
Tag: Myc-DDK
Symbol: CALML6
Synonyms: CAGLP
Mammalian Cell Selection: Neomycin
Vector: pCMV6-Entry (PS100001)
E. coli Selection: Kanamycin (25 ug/mL)
ORF Nucleotide Sequence: >RC222115 representing NM_138705
Red=Cloning site Blue=ORF Green=Tags(s)

TTTTGTAATACGACTCACTATAGGGCGGCCGGAATTCGTCGACTGGATCCGGTACCGAGGAGATCTGCC
GCC**CGATCGCC**

ATGGGTCTTCAACAAGAAATCTCACTGCAGCCCTGGTGTACCACCCTGCAGAATCCTGTCAGACAACCA
CCGACATGACAGAGCGCCTGTCGGCTGAGCAGATCAAGGAGTACAAGGGAGTCTTTGAGATGTTGACGA
AGAGGGCAACGGGGAGGTGAAGACGGGGAGCTGGAGTGGCTCATGAGCCTGCTGGGTATCAACCCACC
AAGAGTGAGCTGGCCTCAATGGCCAAGGATGTGGACAGAGACAACAAAGGGTTCTTCACTGCGATGGTT
TCCTGGCACTAATGGGAGTTTACCATGAGAAGGCCGAGAACCAGGAGAGCGAGCTGAGGGCGGCATTCCG
TGTCTTTGACAAAGAGGGCAAGGGCTACATTGACTGGAACACACTCAAGTACGTGCTAATGAACGCAGGG
GAGCCCTCAACGAGGTGGAGGGGAGCAGATGATGAAGGAGGCCGACAAGGATGGGGACAGGACCATCG
ACTATGAGGAGTTTGTGGCCATGATGACGGGGAGTCTTCAAGCTGATCCAG

ACGCGTACGCGGCCGCTCGAGCAGAACTCATCTCAGAAGAGGATCTGGCAGCAAATGATATCCTGGATT
ACAAGGATGACGACGATAAGGTTTAA

Protein Sequence: >RC222115 representing NM_138705
Red=Cloning site Green=Tags(s)

MGLQQEISLQPWCHHPAESCQTTTDMTERLSAEQIKEYKGVFEMFDEEGNGEVKTGELEWMSLLGINPT
KSELASMAKDVDRDNKGFNCDGFLALMGVYHEKAQNQESELRAAFRVFDKEGKYIDWNTLKYYLMNAG
EPLNEVEAEQMMKEADKGDRTIDYEEFVAMMTGESFKLIQ

TRTRPLEQKLISEEDLAANDILDYKDDDDKV

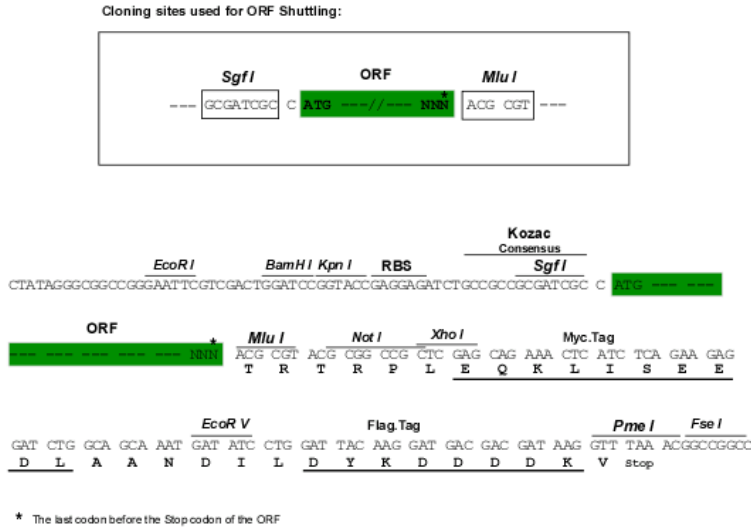
Chromatograms: https://cdn.origene.com/chromatograms/mk8039_f05.zip



[View online »](#)

Restriction Sites: **SgfI-MluI**

Cloning Scheme:



ACCN: **NM_138705**

ORF Size: **543 bp**

OTI Disclaimer: The molecular sequence of this clone aligns with the gene accession number as a point of reference only. However, individual transcript sequences of the same gene can differ through naturally occurring variations (e.g. polymorphisms), each with its own valid existence. This clone is substantially in agreement with the reference, but a complete review of all prevailing variants is recommended prior to use. [More info](#)

OTI Annotation: This clone was engineered to express the complete ORF with an expression tag. Expression varies depending on the nature of the gene.

Components: The ORF clone is ion-exchange column purified and shipped in a 2D barcoded Matrix tube containing 10ug of transfection-ready, dried plasmid DNA (reconstitute with 100 ul of water).

- Reconstitution Method:
1. Centrifuge at 5,000xg for 5min.
 2. Carefully open the tube and add 100ul of sterile water to dissolve the DNA.
 3. Close the tube and incubate for 10 minutes at room temperature.
 4. Briefly vortex the tube and then do a quick spin (less than 5000xg) to concentrate the liquid at the bottom.
 5. Store the suspended plasmid at -20°C. The DNA is stable for at least one year from date of shipping when stored at -20°C.

RefSeq: **NM_138705.4**

RefSeq Size: **1110 bp**

RefSeq ORF: **546 bp**

Locus ID: **163688**

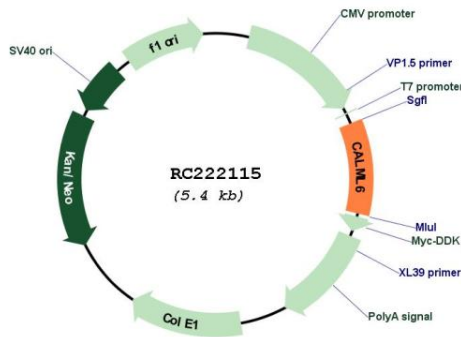
UniProt ID: **Q8TD86**

Cytogenetics: 1p36.33

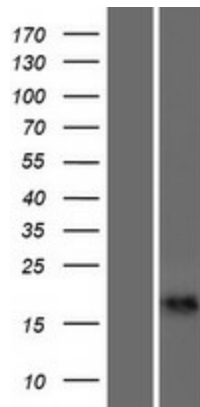
Protein Pathways: Alzheimer's disease, Calcium signaling pathway, Glioma, GnRH signaling pathway, Insulin signaling pathway, Long-term potentiation, Melanogenesis, Neurotrophin signaling pathway, Olfactory transduction, Oocyte meiosis, Phosphatidylinositol signaling system, Vascular smooth muscle contraction

MW: 20.5 kDa

Product images:



Circular map for RC222115



Western blot validation of overexpression lysate (Cat# [LY408555]) using anti-DDK antibody (Cat# [TA50011-100]). Left: Cell lysates from untransfected HEK293T cells; Right: Cell lysates from HEK293T cells transfected with RC222115 using transfection reagent MegaTran 2.0 (Cat# [TT210002]).