

Product datasheet for **RC222112**

RNASE12 (NM_001024822) Human Tagged ORF Clone

Product data:

Product Type:	Expression Plasmids
Product Name:	RNASE12 (NM_001024822) Human Tagged ORF Clone
Tag:	Myc-DDK
Symbol:	RNASE12
Synonyms:	HEL-S-85p; RAI1
Mammalian Cell Selection:	Neomycin
Vector:	pCMV6-Entry (PS100001)
E. coli Selection:	Kanamycin (25 ug/mL)
ORF Nucleotide Sequence:	>RC222112 ORF sequence Red=Cloning site Blue=ORF Green=Tags(s)

TTTTGTAATACGACTCACTATAGGGCGGCCGGAATTCGTCGACTGGATCCGGTACCGAGGAGATCTGCC
GCC**CGATCGCC**

ATGATAATAATGGTGATAATTTTCTTGGTGCTTCTGTTCTGGGAAAATGAGGTGAATGATGAAGCAGTGA
TGTCAACTTTAGAACACTTGCATGTGGACTACCCTCAGAATGACGTTCCCGTTCCTGCAAGGTAAGTCA
CCACATGATCATAACAAGAGTTATCAGGGAACCTGACCACACTTGTAAAAAGGAGCATGTCTTCATCCAT
GAGAGGCCCTCGAAAAATCAATGGTATTTGCATTTCTCCCAAGAAGGTTGCTTGCCAAAACCTTTCGCGCA
TTTTCTGCTTTCAGAGTGAGACAAAGTTCAAAATGACAGTCTGTCAGCTCATTGAAGGCACAAGATACCC
TGCTGCAGGTACCACTATCCCCACAGAGGGGTTTGTCTTGTCACTGTGATGACTTGAGGCCAGAT
AGTTTCCTTGGCTATGTTAAA

ACGCGTACGCGGCCGCTCGAGCAGAACTCATCTCAGAAGAGGATCTGGCAGCAAATGATATCCTGGATT
ACAAGGATGACGACGATAAGGTTTAA

Protein Sequence:	>RC222112 protein sequence Red=Cloning site Green=Tags(s)
-------------------	--

MIIMVIFLVLLFWENEVND EAVMSTLEHLHVDYPQNDVVPARYCNHMIQRVIREPDHTCKKEHVFIIH
ERPRKINGICISPKKVACQNLSAIFCFQSETKFKMTVCQLIEGTRYPACRYHYSPTGEGFLVLTCDLRLPD
SFLGYVK

TRTRPLEQKLISEEDLAANDILDYKDDDDKV

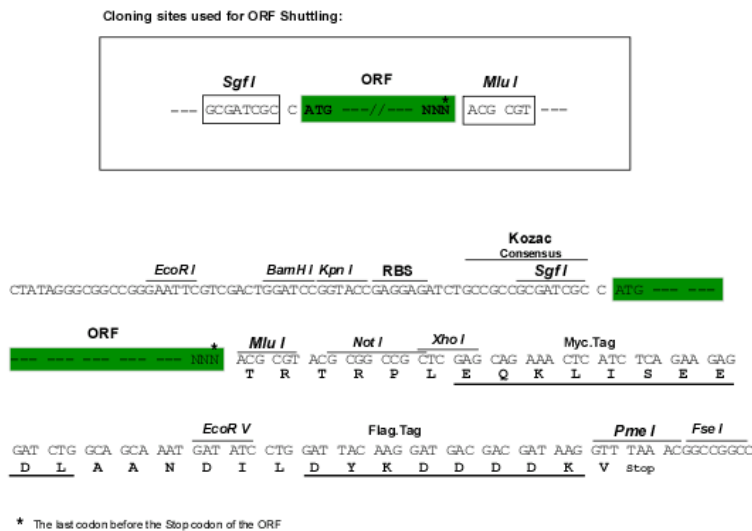
Chromatograms:	https://cdn.origene.com/chromatograms/mk6467_d03.zip
----------------	---



[View online »](#)

Restriction Sites: SgfI-MluI

Cloning Scheme:



ACCN: NM_001024822

ORF Size: 441 bp

OTI Disclaimer: The molecular sequence of this clone aligns with the gene accession number as a point of reference only. However, individual transcript sequences of the same gene can differ through naturally occurring variations (e.g. polymorphisms), each with its own valid existence. This clone is substantially in agreement with the reference, but a complete review of all prevailing variants is recommended prior to use. [More info](#)

OTI Annotation: This clone was engineered to express the complete ORF with an expression tag. Expression varies depending on the nature of the gene.

Components: The ORF clone is ion-exchange column purified and shipped in a 2D barcoded Matrix tube containing 10ug of transfection-ready, dried plasmid DNA (reconstitute with 100 ul of water).

Reconstitution Method:

1. Centrifuge at 5,000xg for 5min.
2. Carefully open the tube and add 100ul of sterile water to dissolve the DNA.
3. Close the tube and incubate for 10 minutes at room temperature.
4. Briefly vortex the tube and then do a quick spin (less than 5000xg) to concentrate the liquid at the bottom.
5. Store the suspended plasmid at -20°C. The DNA is stable for at least one year from date of shipping when stored at -20°C.

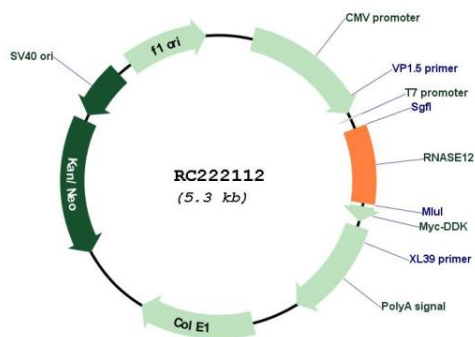
RefSeq: [NM_001024822.3](#)

RefSeq Size: 748 bp

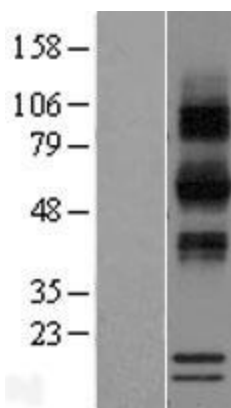
RefSeq ORF: 444 bp

Locus ID: 493901

UniProt ID: [Q5GAN4](#)
Cytogenetics: 14q11.2
MW: 17.2 kDa
Gene Summary: Does not exhibit any ribonuclease activity.[UniProtKB/Swiss-Prot Function]

Product images:


Circular map for RC222112



Western blot validation of overexpression lysate (Cat# [LY422543]) using anti-DDK antibody (Cat# [TA50011-100]). Left: Cell lysates from untransfected HEK293T cells; Right: Cell lysates from HEK293T cells transfected with RC222112 using transfection reagent MegaTran 2.0 (Cat# [TT210002]).