

## Product datasheet for RC222110

### HSD11B1L (NM\_198533) Human Tagged ORF Clone

#### Product data:

Product Type:	Expression Plasmids
Product Name:	HSD11B1L (NM_198533) Human Tagged ORF Clone
Tag:	Myc-DDK
Symbol:	HSD11B1L
Synonyms:	11-beta-HSD3; 11-DH3; HSD1L; HSD3; SCDR10; SCDR10B; SDR26C2
Mammalian Cell Selection:	Neomycin
Vector:	pCMV6-Entry (PS100001)
E. coli Selection:	Kanamycin (25 ug/mL)
ORF Nucleotide Sequence:	>RC222110 representing NM_198533 Red=Cloning site Blue=ORF Green=Tags(s)

TTTTGTAATACGACTCACTATAGGGCGGCCGGAATTCGTCGACTGGATCCGGTACCGAGGAGATCTGCC  
GCC**CGATCGCC**

ATGAAGGTGCTTCTCCTCACAGGGCTGGGGCCCTGTTCTTCGCCTATTATTGGGATGACAACTTCGACC  
CAGCCAGCCTCCAGGGAGCGGAGTGCTGCTGACAGGGGCAACGCTGGTGTGGTGGAGAGCTGGCCTA  
TCACTACGCGGTCTGGGCTCCACCTGGTGCTACTGCCACACTGAGGCTCCTCAGAGAAGGTGGTA  
GGGAAGTGCAGGAACTGGGCGCCCCAAGGTCTTCTACATCGCGCGGACATGGCCTCCCTGAGGCGC  
CCGAGAGCGTGGTGCAGTTTGCCTGGACAAGCTGGGCGGGCTGGACTACCTCGTCTGAACCACATCGG  
CGGCGCCCCGGCCGACGCGAGCCCGCAGCCCCAGGCAACTCGCTGGCTCATGCAGGTAACCTTTGTG  
AGCTACGTGCAACTGACGTGCGGGGCGCTGCCAGCCTGACGGACAGCAAGGGCTCCCTGGTGGTGGTGT  
CCTCGCTGCTCGGCCGCTGCCACGTCGTTCTCCACTCCCTACTCGGCGGCAAGTTTGCCTGGACGG  
CTTCTTCGGCTCCCTGCGCGGGAGCTGGACGTGACGAGCTGAACGTGGCCATCACCATGTGCTCCTG  
GGCCTCCGAGATCGGCCCTCCGCCGCGGAGGAGTCAGGAGCTCAACGTACGGCCGCGGACGCTGAGC  
ACCGGGGGGTGCCCTCCAGTCCAGACGGCAATGTTCTCCCTCCAAGTGTCCCTGGAGCCAGAACACT  
CACAGAGACCCCTGAGAGGGTGGCCACAGCCCAAGATGAAGTCATCAAGACAGAAAAGCAAACCGAG  
AAAAACGACGGGACCTGGAACCAAGTACGGCTTGGGAGGTGCAGGTGCCCGTGTAGGCGCCTTTGTC  
GGGGACTTGAAGGCCTCACCTGTTGGCCATGAT

**ACGCGT**ACGCGGCCGCTCGAGCAGAAACTCATCTCAGAAGAGGATCTGGCAGCAAATGATATCCTGGATT  
ACAAGGATGACGACGATAAGGTTTAA



[View online »](#)

**Protein Sequence:** >RC222110 representing NM\_198533  
Red=Cloning site Green=Tags(s)

MKVLLLTGLGALFFAYYWDNFDNFDASLQGARVLLTGANAGVGEELAYHYARLGSHLVLT AHT EALLQKVV  
 GNCRKLGAPKVFYIAADMASPEAPESVVQFALDKLGGLDYLVLNHI GGAPAGTRARSPQATRWMQVNFV  
 SYVQLTSRALPSLTDSKGLVVVSSLLGRVPTSFSTPYSAAKFALDGGFFGSLRRELDVQDVNVAITMCVL  
 GLRDRASAAEAVRSSTSRPRQPEHRGVPLQSQTAMFLPPTVPGARTLTETPLRGWPQPKMKSSRQKSKTE  
 KNDGHLPEVTAWEVQVPRVRRLCRGLARPHLFGHD

TRTRPLEQKLISEEDLAANDILDYKDDDDKV

**Chromatograms:** [https://cdn.origene.com/chromatograms/mk6115\\_e08.zip](https://cdn.origene.com/chromatograms/mk6115_e08.zip)

**Restriction Sites:** SgfI-MluI

**Cloning Scheme:**



**ACCN:** NM\_198533

**ORF Size:** 945 bp

**OTI Disclaimer:** The molecular sequence of this clone aligns with the gene accession number as a point of reference only. However, individual transcript sequences of the same gene can differ through naturally occurring variations (e.g. polymorphisms), each with its own valid existence. This clone is substantially in agreement with the reference, but a complete review of all prevailing variants is recommended prior to use. [More info](#)

**OTI Annotation:** This clone was engineered to express the complete ORF with an expression tag. Expression varies depending on the nature of the gene.

**Components:** The ORF clone is ion-exchange column purified and shipped in a 2D barcoded Matrix tube containing 10ug of transfection-ready, dried plasmid DNA (reconstitute with 100 ul of water).

**Reconstitution Method:**

1. Centrifuge at 5,000xg for 5min.
2. Carefully open the tube and add 100ul of sterile water to dissolve the DNA.
3. Close the tube and incubate for 10 minutes at room temperature.
4. Briefly vortex the tube and then do a quick spin (less than 5000xg) to concentrate the liquid at the bottom.
5. Store the suspended plasmid at -20°C. The DNA is stable for at least one year from date of shipping when stored at -20°C.

**RefSeq:** [NM\\_198533.3](#)

**RefSeq Size:** 1542 bp

**RefSeq ORF:** 948 bp

**Locus ID:** 374875

**UniProt ID:** [Q7Z5J1](#)

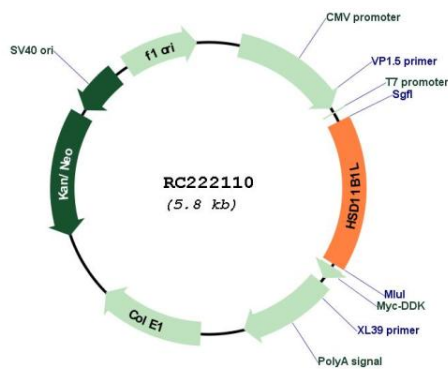
**Cytogenetics:** 19p13.3

**Protein Families:** Druggable Genome

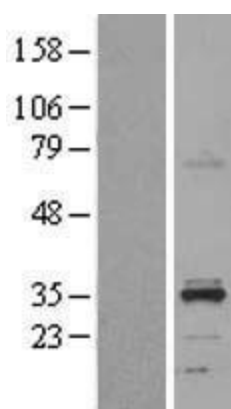
**MW:** 34.1 kDa

**Gene Summary:** This gene is a member of the hydroxysteroid dehydrogenase family. The encoded protein is similar to an enzyme that catalyzes the interconversion of inactive to active glucocorticoids (e.g. cortisone). Alternatively spliced transcript variants encoding multiple isoforms have been observed for this gene. [provided by RefSeq, Jun 2012]

### Product images:



Circular map for RC222110



Western blot validation of overexpression lysate (Cat# [LY403686]) using anti-DDK antibody (Cat# [TA50011-100]). Left: Cell lysates from untransfected HEK293T cells; Right: Cell lysates from HEK293T cells transfected with RC222110 using transfection reagent MegaTran 2.0 (Cat# [TT210002]).