

## Product datasheet for **RC222101**

### UNC13A (NM\_001080421) Human Tagged ORF Clone

#### Product data:

Product Type:	Expression Plasmids
Product Name:	UNC13A (NM_001080421) Human Tagged ORF Clone
Tag:	Myc-DDK
Symbol:	UNC13A
Synonyms:	Munc13-1
Mammalian Cell Selection:	Neomycin
Vector:	pCMV6-Entry (PS100001)
E. coli Selection:	Kanamycin (25 ug/mL)
ORF Nucleotide Sequence:	>RC222101 representing NM_001080421. Blue=ORF Red=Cloning site Green=Tag(s)

```
GCTCGTTTGTAGTAACCGTCAGAATTTTGTAAACGACTCACTATAGGGCGCCGGGAATTCGTCGACTG
GATCCGGTACCGAGGAGATCTGCCGCCGCGATCGCC
ATGTCTCTGCTTTGCGTTGGAGTCAAAAAAGCCAAGTTTGGTGGTCCCAAGAGAAATCAACACGTAC
GTGACCCGTGAAAGTGCAGAATGTCAAGAGCAGCACCATCGCGGTGCGGGGCAGCCAGCCAGCTGGGAG
CAGGATTTTCATGTTTCGAGATTAACCGTCTGGATTTGGGACTGACGGTGGAGGTGTGAATAAGGGTCTC
ATCTGGGACACAATGGTGGGCACTGTGTGGATCCCACTGAGGACCATCCGCCAGTCCAATGAGGAGGGC
CCTGGAGAGTGGCTGACGCTGGACTCCCAGGTCATCATGGCAGACAGTGAGATCTGTGGCACCAGGAC
CCCACCTTCCACCGCATCTCCTGGACACGCGCTTTGAGCTACCCTTAGACATTCCTGAAGAGGAGGCT
CGCTACTGGGCCAAGAAGCTGGAGCAGCTCAATGCTATGCGGGACCAGGATGAATATTTCGTTCCAAGAT
GAGCAAGACAAGCCTCTGCCTGTCCCCAGCAACCAAGTGTGCAACTGGAATTATTTGGTGTTGGGTGAG
CAGCACAACGATGACCCCGACAGTGCAGTGGATGATCGTGACAGTGACTACCGCAGTGAAACGAGCAAC
AGCATCCCGCCGCCCTATTATACTACGTCAACCCAACGCCCTCAGTCCACCAATATTCTGTTCCGCCA
CCACCCCTGGGCTCCCGGGAGTCTACAGTACTCCATGCACAGTTACGAGGAGTTCTCTGAGCCACAA
GCCCTCAGCCCCACGGGTAGCAGCCGCTATGCCTCTTCCGGGGAGCTGAGCCAGGGAAGCTCTCAGCTG
AGCGAGGACTTCGACCCGTGACGAGCACAGCCTGCAGGGCTCCGACATGGAGGATGAGCGGGACCGGGAC
TCCTACCACTCCTGCCACAGCTCGGTGAGTACCACAAAGACTCGCCTCGCTGGGACCAGGATGAGGAA
GAGCTGGAGGAGGACCTGGAGGACTTCTGGAGGAGGAGGAGCTGCCTGAAGATGAGGAGGAGCTGGAG
GAGGAGGAGGAGGAGGTGCCTGACGATTTGGGAGCTATGCCAGCGTGAAGACGTAGCTGTGGCTGAG
CCCAAAGACTTCAAACGCATCAGCCTCCCGCCAGCTGCCCAAGGAGGAGGACAAGGCCCCAGTGGCA
CCCACCGAGGCCCGGACATGGCCAAGGTGGCCCCAAGCCAGCCAGCCCGGACAAGGTGCCTGCAGCT
GAGCAGATCCCTGAGGCTGAGCCACCAAGGACGAGGAGAGTTTCAGGCCGAGAGGAGTGAAGAGGC
CAGGAGGGGCAGGACTCCATGTCCAGGGCCAAGGCCAAGTGGCTGCGTGCCTTCAACAAGGTGCGGATG
CAGCTGCAGGAGGCCCGGGGAGAAGGAGAGATGTCTAAATCCCTATGGTTCAAAGGCCGCCAGGGGGC
GGTCTCATCATCATCGACAGCATGCCAGACATCCGAAGAGGAAACCTATCCCACTCGTGAGCGACTTG
```



[View online »](#)

GCCATGTCCCTGGTCCAGTCCAGGAAAGCGGGCATCACCTCGGCCTTGGCCTCCAGCACGTTGAACAAC  
 GAGGAGCTGAAAAACACGTTTACAAGAAGACCCTGCAAGCCTTAATCTACCCCATCTCGTGCACGACG  
 CCACACAACCTCGAAGTGTGGACGGCCACCACGCCACCTACTGCTACGAGTGGAGGGGCTGCTGTGG  
 GGCATCGCGAGGCGAGGCATGCGCTGCACCGAGTGCGGTGTCAAGTGCCACGAGAAGTGCCAGGACCTG  
 CTAACGCCGACTGCCTGCAGCGGGCTGCGGAGAAGAGCTCAAGCACGGGGCGGAGGACCGGACACAG  
 AACATCATCATGGTGTCAAGGACCGCATGAAGATCCGGGAGCGCAACAAGCCCGAGATCTTCGAGCTC  
 ATCCAGGAGATCTTCGCGGTGACCAAGACGGCGCACACGCAGCAGATGAAGGCGGTCAAGCAGAGCGTG  
 CTGGACGGCACGTCCAAGTGGTCCGCCAAGATCAGCATCACCGTGGTCTGCGCCAGGGCTTGCAGGCA  
 AAGGACAAGACAGGATCCAGTGACCCCTATGTACCCGTCCAGGTCGGGAAGACCAAGAAACGGACAAAA  
 ACCATCTATGGGAACCTCAACCCGGTGTGGGAGGAGAATTTCCACTTTGAATGTCACAATTCCTCCGAC  
 CGCATCAAGGTGCGCGTCTGGGACGAGGATGACGACATCAAATCCCGCGTGAAACAGAGGTTCAAGAGG  
 GAATCTGACGATTTCTGGGCGAGACGATCATTGAGGTGCGGACGCTCAGCGCGGAGATGGACGTGTGG  
 TACAACCTGGACAAGCGAACTGACAAATCTGCCGTGTCGGGTGCCATCCGGCTCCACATCAGTGTGGAG  
 ATCAAAGGCGAGGAGAAGGTGGCCCGTACCATGTCCAGTACACCTGTCTGCATGAGAACCTGTTCCAC  
 TTCGTGACCGACGTGCAGAAATGGGGTTCGTGAAGATCCAGATGCCAAGGGTGACGATGCCTGGAAG  
 GTTACTACGATGAGACAGCCCAGGAGATTGTGGACGAGTTTGCCATGCGCTACGGCGTCGAGTCCATC  
 TACCAAGCCATGACCCACTTTGCCTGCCTCTCCTCCAAGTATATGTGCCAGGGGTGCCTGCCGTATG  
 AGCACCTGCTCGCCAACATCAATGCCTACTACGCACACACCACCGCCTCCACCAACGTGTCTGCCTCC  
 GACCGCTTCGCCGCTCCAACCTTGGGAAAGAGCGCTTCGTGAACTCCTGGACCAGCTGCATAACTCC  
 CTGCGGATTGACCTCTCCATGTACCGGAATAACTCCCAGCCAGCAGCCCGGAGAGACTCCAGGACCTC  
 AAATCCACTGTGGACCTTCTACCAGCATCACCTTCTTCGGATGAAGGTACAAGAACTCCAGAGCCCG  
 CCCCAGCCAGCCAGGTGGTAAAGGACTGTGTGAAAGCCTGCCTAATTTACCTACGAGTACATCTTCA  
 AATAACTGCCATGAACTGTACAGCCGGGAGTACCAGACAGACCCCGCAAGAAGGGGGAAGTTCTCCCA  
 AGGGAACAGGGGCCAGCATCAAGAACCTCGACTTCTGGTCCAAGCTGATTACCCTCATAGTGTCCATC  
 ATTGAGGAAGACAAGAATTCCTACACTCCCTGCCTCAACCAAGTTTCCCCAGGAGCTGAATGTGGTAAA  
 ATCAGCGCTGAAGTGATGTGGAATCTGTTTGCCCAAGACATGAAGTACGCCATGGAGGAGCAGACAAG  
 CATCGTCTATGCAAGAGTGCCGACTACATGAACCTCCACTTCAAGGTGAAATGGCTCTACAATGAGTAT  
 GTGACGGAACCTCCCGCTTCAAGGACCGGTGCCTGAGTACCCTGCATGGTTTGAACCTTCGTATC  
 CAGTGGCTGGATGAGAATGAGGAGGTGTCCCGGATTTCTGCACGGTGCCTGGAGCGAGACAAGAAG  
 GATGGGTTCCAGCAGACCTCAGAGCATGCCCTATTCTCCTGCTCCGTGGTGGATGTTTTCTCCAACTC  
 AACCAAGCTTTGAAATCATCAAGAACTCGAGTGTCCCGACCTCAGATCGTGGGGCACTACATGAGG  
 CGCTTTGCCAAGACCATCAGTAATGTGCTCCTCCAGTATGCAGACATCATCTCCAAGGACTTTGCCTCC  
 TACTGCTCCAAGGAGAAGGAGAAAGTGCCTGCATTCTCATGAATAACACTCAACAGCTACGAGTTCAG  
 CTGGAGAAGATGTTTGAAGCCATGGGAGGAAAGGAGCTGGATGCTGAAGCCAGTGACATCCTGAAGGAG  
 CTTGAGGTGAACTCAATAACGTCTTGGATGAGCTCAGCCGGGTGTTTGTACCAGCTTCCAGCCGCAC  
 ATTGAAAGAGTGTGTCAAACAGATGGGTGACATCCTTAGCCAGGTTAAGGGCACAGGCAATGTGCCAGCC  
 AGTGCCTGCAGCAGCGTGGCCAGGACGCGGACAATGTGTTGCAGCCATCATGGACCTGCTGGACAGC  
 AACCTGACCTCTTTGCCAAAATCTGTGAGAAGACTGTGCTGAAGCGAGTGTGAAGGAGCTGTGGAAG  
 CTGTTATGAACACCATGGAGAAAACATCGTCTGCGCCCTCACTGACCAGACGATGATCGGGAAC  
 CTCTTGAGAAAACATGGCAAGGATTAGAAAAGGCGAGGGTGAATTTGCCAAGCCACTCAGACGGAACC  
 CAGATGATCTTCAATGCAGCCAAGGAGCTGGGTGACGTGTCCAACTCAAGGATCAGATGGTACGAGAA  
 GAAGCCAAGAGCTTGACCCCAAAGCAGTGCAGGTTGTTGAGTTGGCCCTGGACACCATCAAGCAATAT  
 TTCCACGCGGGTGGCGTGGGCTCAAGAAGACCTTCTGGAGAAGAGCCCGACCTGCAATCCTTGCGC  
 TATGCCCTGTGCTCTACACGACAGGCCACCGACCTGCTAATCAAGACCTTTGTACAGACGCAATCGGCC  
 CAGGGCTTGGGTGTAGAAGACCTGTGGGTGAAGTCTGTCCATGTTGAGCTGTTCACTCATCCAGGA  
 ACTGGGGAACACAAGGTACAGTGAAGTGGTGGCTGCCAATGACCTCAAGTGGCAGACTTCTGGCATC  
 TTCGGCCGTTTATCGAGGTCAACATCATTGGGCCAGCTCAGCGACAAGAAACGAAGTTTGCAGC  
 AAATCCAAGAACAATAGCTGGGCTCCCAAGTACAATGAGAGCTTCCAGTTCACGCTGAGCGCCGACGCG  
 GGTCCCGAGTGTATGAGCTGCAGGTGTGCGTCAAGGACTACTGCTTCGCGCGGAGGACCCGACCGTG  
 GGGCTGGCCGTGCTGCAGCTGCGTGAAGTGGCCAGCGCGGGAGCGCCGCTGCTGGCTGCCGCTCGGC  
 CGCCGATCCACATGGACGACACGGGCTCACGGTGTGCGAATCCTCTCGCAGCGCAGCAACGACGAG  
 GTGGCCAAGGAGTTCGTGAAGCTCAAGTCCGACACGCGCTCCGCCGAGGAGGGCGGTGCCGCGCTCGC

CCT  
ACGCGTACGCGGCCGCTCGAGCAGAACTCATCTCAGAAGAGGATCTGGCAGCAAATGATATCCTGGAT  
TACAAGGATGACGACGATAAGGTTTAAACGGCCGGC

**Protein Sequence:**

>Peptide sequence encoded by RC222101  
Blue=ORF Red=Cloning site Green=Tag(s)

MSLLCVGVKAKAFDGAQEKFNYYVTLKVVQNVKSTTIAVRGSQPSWEQDFMFEINRLDLGLTVEVWNKGL  
 IWDTMVGTVWIPLRIRQSNEEGPGEWLTLDSQVIMADSEICGTKDPTFHRILLDRFELPLDIPPEEA  
 RYWAKKLEQLNAMRDQDEYSFQDEQDKPLPVPSNQCWNWYFGWGEQHNDPDSAVDDRRSDYRSETSN  
 SIPPYYTTSQPNASVHQYVSRPPPLGSRESYSDSMHSYEEFSEPQALSPTGSSRYASSGELSQGSSQL  
 SEDFDPDEHSLQGSMDERDRDSYHSCSSVSYHKDSPRWDQDEEELDEDFLEEEELPEDEEEL  
 EEEEEVPDDLGSYAQREDVAEPAKDFKRISLPPAAPGKEDKAPVAPTEAPDMAKVAPKATPDKVPAA  
 EQIPEAEPKDEESFRPREDEEGQEGQDSMSRAKANWLRANFKVRMQLQEARGE GEMSKSLWFKGGPGG  
 GLIIDSMPDIRKRKPIPLVSDLAMSLLVQSRKAGITSALASSTLNNEELKNHVYKTLQALYPIISCTT  
 PHNFEVWTATPTCYCEGLLWGIARQMRCTECGVKCEKQDQLLNADCLQRAAEKSSKHGAEDRTQ  
 NIIMVLKDRMKIRERNKPEIFELIQEIFAVTKTAHTQQMKAVKQSVLDGTSKWSAKISITVVCAQGLQA  
 KDKTGSSDPYVTVQVGTKKRKTIIYGNLNPVWEENFHFECNSSDRIVRVWDEDDIKSRVKQRFKR  
 ESDDFLGQTIIEVRTLSGEMDVWYNLDKRTDKSAVSGAIRLHISVEIKGEEKVAPYHVQYTCLENLHF  
 FVTDVQNGVVKIPDAKGDDAWKVVYDETAQEIVDEFAMRYGVESIYQAMTHFACLSSKYMCPGVPAM  
 STLLANINAYYAHTTASTNVSASDRFAASNFGKERFVKLLDQLHNSLRIDL SMYRNNFPASSPERLQDL  
 KSTVDLLTSITFFRMKVQELQSPPRASQVVKDCVKAQLNSTYEYIFNNCHELYSREYQTPAKKGEVLP  
 EEQGPSIKNLDLWFKLITLIVSIIIEEDKNSYTPCLNQFPQELNVGKISAEVMWNLFAQDMKYAMEEHDK  
 HRLCKSADYMNLFHKVVKWLYNEYVTELPAFKDRVPEYPAWFEPFVIQWLDENEVSRDFLHGALERDKK  
 DGFQQTSEHALFSCSVVDVFSQLNQSFEEIKKLECPDPQIVGHYMRFAKTISNVLLQYADIISKDFAS  
 YCSKEKEKVPICILMNNTQQLRVQLEKMFAMGGKELDAEASDILKELQVKLNNVLDLRSRVFATSFQPH  
 IEECVKQMGDILSQVKGTVNVPASACSSVAQDADNVLPIMDLLSNLTLFAKICEKTVLKRVLKELWK  
 LVMNTMEKTIVLPLTDQTMIGNLLRKHGKLEKGRVKLPSHSDGTQMI FNAAKELGQLSKLKDHMVRE  
 EAKSLTPKQCAVVELALDTIKQYFHAGGVGLKKTFLKSPDLQSLRYALSLYTQATDLLIKTFVQTQSA  
 QGLGVEDPVGEVSVHVELFTHPGTGEHKVTVKVVAAANDLKWQTSIGIFRPFIEVNIIGPQLSDKRRKFAT  
 KSKNNSWAPKYNESFQFTLSADAGPECYELQVCVKDYCFAREDRTVGLAVLQLRELAQRGSAACWPLG  
 RRIHMDDTGLTVLRILSQRSNDEVAKEFVKLKS DTRSAAEEGGAAPAP  
TRTRPLEQKLISEEDLAANDILDYKDDDDKV

**Chromatograms:**

[https://cdn.origene.com/chromatograms/mk8039\\_f08.zip](https://cdn.origene.com/chromatograms/mk8039_f08.zip)

**Restriction Sites:**

Sgfl-Mlul

**Cloning Scheme:**


**ACCN:** NM\_001080421

**ORF Size:** 5109 bp

**OTI Disclaimer:** The molecular sequence of this clone aligns with the gene accession number as a point of reference only. However, individual transcript sequences of the same gene can differ through naturally occurring variations (e.g. polymorphisms), each with its own valid existence. This clone is substantially in agreement with the reference, but a complete review of all prevailing variants is recommended prior to use. [More info](#)

**OTI Annotation:** This clone was engineered to express the complete ORF with an expression tag. Expression varies depending on the nature of the gene.

**Components:** The ORF clone is ion-exchange column purified and shipped in a 2D barcoded Matrix tube containing 10ug of transfection-ready, dried plasmid DNA (reconstitute with 100 ul of water).

**Reconstitution Method:**

1. Centrifuge at 5,000xg for 5min.
2. Carefully open the tube and add 100ul of sterile water to dissolve the DNA.
3. Close the tube and incubate for 10 minutes at room temperature.
4. Briefly vortex the tube and then do a quick spin (less than 5000xg) to concentrate the liquid at the bottom.
5. Store the suspended plasmid at -20°C. The DNA is stable for at least one year from date of shipping when stored at -20°C.

**RefSeq:** [NM\\_001080421.3](#)

**RefSeq Size:** 10102 bp

**RefSeq ORF:** 5112 bp

**Locus ID:** 23025

**UniProt ID:** [Q9UPW8](#)

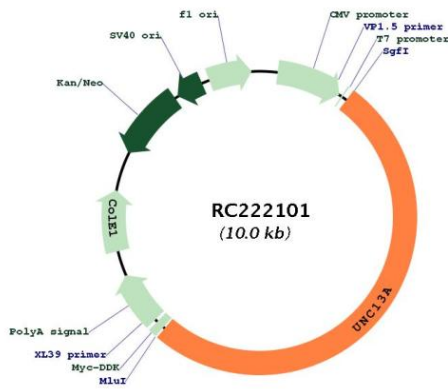
**Cytogenetics:** 19p13.11

**Protein Families:** Druggable Genome

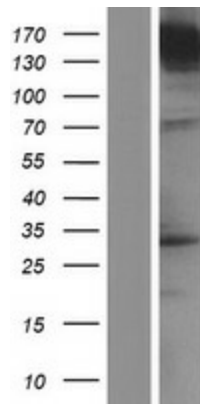
**MW:** 193 kDa

**Gene Summary:** This gene encodes a member of the UNC13 family. UNC13 proteins bind to phorbol esters and diacylglycerol and play important roles in neurotransmitter release at synapses. Single nucleotide polymorphisms in this gene may be associated with sporadic amyotrophic lateral sclerosis. [provided by RefSeq, Feb 2012]

**Product images:**



Circular map for RC222101



Western blot validation of overexpression lysate (Cat# [LY421638]) using anti-DDK antibody (Cat# [TA50011-100]). Left: Cell lysates from untransfected HEK293T cells; Right: Cell lysates from HEK293T cells transfected with RC222101 using transfection reagent MegaTran 2.0 (Cat# [TT210002]).