

Product datasheet for RC222100L1

MMP24 (NM_006690) Human Tagged Lenti ORF Clone

Product data:

Product Type:	Expression Plasmids
Product Name:	MMP24 (NM_006690) Human Tagged Lenti ORF Clone
Tag:	Myc-DDK
Symbol:	MMP24
Synonyms:	MMP-24; MMP25; MT-MMP 5; MT-MMP5; MT5-MMP; MT5MMP; MTMMP5
Mammalian Cell Selection:	None
Vector:	pLenti-C-Myc-DDK (PS100064)
E. coli Selection:	Chloramphenicol (34 ug/mL)
ORF Nucleotide Sequence:	The ORF insert of this clone is exactly the same as(RC222100).
Restriction Sites:	SgfI-MluI
Cloning Scheme:	

Cloning sites used for ORF Shuttling:



* The last codon before the Stop codon of the ORF.

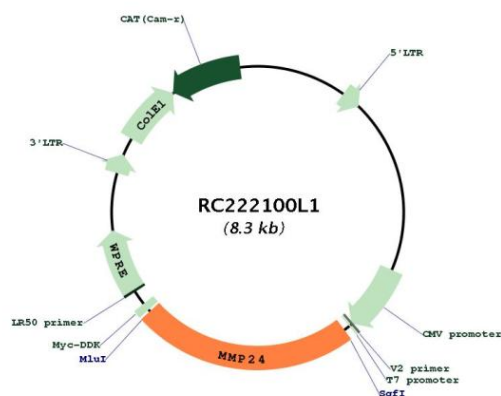
ACCN:	NM_006690
ORF Size:	1935 bp



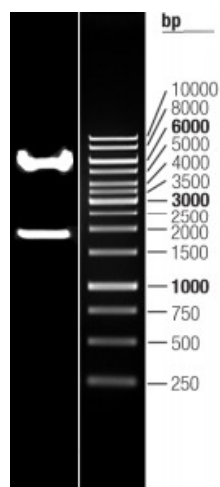
[View online »](#)

OTI Disclaimer:	The molecular sequence of this clone aligns with the gene accession number as a point of reference only. However, individual transcript sequences of the same gene can differ through naturally occurring variations (e.g. polymorphisms), each with its own valid existence. This clone is substantially in agreement with the reference, but a complete review of all prevailing variants is recommended prior to use. More info
OTI Annotation:	This clone was engineered to express the complete ORF with an expression tag. Expression varies depending on the nature of the gene.
Components:	The ORF clone is ion-exchange column purified and shipped in a 2D barcoded Matrix tube containing 10ug of transfection-ready, dried plasmid DNA (reconstitute with 100 ul of water).
Reconstitution Method:	<ol style="list-style-type: none"> 1. Centrifuge at 5,000xg for 5min. 2. Carefully open the tube and add 100ul of sterile water to dissolve the DNA. 3. Close the tube and incubate for 10 minutes at room temperature. 4. Briefly vortex the tube and then do a quick spin (less than 5000xg) to concentrate the liquid at the bottom. 5. Store the suspended plasmid at -20°C. The DNA is stable for at least one year from date of shipping when stored at -20°C.
RefSeq:	NM_006690.3
RefSeq Size:	4344 bp
RefSeq ORF:	1938 bp
Locus ID:	10893
UniProt ID:	Q9Y5R2
Cytogenetics:	20q11.22
Domains:	hemopexin, Peptidase_M10, ZnMc
Protein Families:	Druggable Genome, Transmembrane
MW:	73.23 kDa
Gene Summary:	This gene encodes a member of the peptidase M10 family of matrix metalloproteinases (MMPs). Proteins in this family are involved in the breakdown of extracellular matrix in normal physiological processes, such as embryonic development, reproduction, and tissue remodeling, as well as in disease processes, such as arthritis and metastasis. The encoded preproprotein is proteolytically processed to generate the mature protease. Unlike most MMPs, which are secreted, this protease is a member of the membrane-type MMP (MT-MMP) subfamily, contains a transmembrane domain and is expressed at the cell surface. Substrates of this protease include the proteins cadherin 2 and matrix metalloproteinase 2 (also known as 72 kDa type IV collagenase). The gene has previously been referred to as MMP25 but has been renamed matrix metalloproteinase 24 (MMP24). [provided by RefSeq, Oct 2019]

Product images:



Circular map for RC222100L1



Double digestion of RC222100L1 using SgfI and MluI