

## Product datasheet for **RC222098**

### **OXER1 (NM\_148962) Human Tagged ORF Clone**

#### **Product data:**

Product Type:	Expression Plasmids
Product Name:	OXER1 (NM_148962) Human Tagged ORF Clone
Tag:	Myc-DDK
Symbol:	OXER1
Synonyms:	GPCR; GPR170; TG1019
Mammalian Cell Selection:	Neomycin
Vector:	pCMV6-Entry (PS100001)
E. coli Selection:	Kanamycin (25 ug/mL)



[View online »](#)

**ORF Nucleotide Sequence:**

>RC222098 representing NM\_148962  
 Red=Cloning site Blue=ORF Green=Tags(s)

TTTTGTAATACGACTCACTATAGGGCGGCCGGAATTCGTCGACTGGATCCGGTACCGAGGAGATCTGCC  
 GCC**CGGATCGCC**

ATGTTGTGTACCGTGGTGGCCAGCTGATAGTGCCAATCATCCCCTTTGCCCTGAGCACTCTGCAGGG  
 GTAGAAGACTCCAGAACCTTCTCTCAGGCCATGGCCCAAGCAGCCCATGGAACCTCATAACCTGAGCTC  
 TCCATCTCCCTCTCTCTCCTCTGTTCTCCCTCCCTCCTTCTCTCCCTCACCTCCTCTGCTCCCTCT  
 GCCTTTACCACTGTGGGGGGTCTCTGGAGGGCCCTGCCACCCACCTTCTCTCGCTGGTGTCTGCCT  
 TCCTGGCACCAATCCTGGCCCTGGAGTTTGTCTGGCCCTGGTGGGAACAGTTTGGCCCTTTCATCTT  
 CTGCATCCACACGCGCCCTGGACCTCCAACACGGTGTCTGGTCAGCCTGGTGGCCGCTGACTTCCTC  
 CTGATCAGCAACCTGCCCTCCGCGTGGACTACTACCTCCTCCATGAGACCTGGCGCTTTGGGGCTGCTG  
 CCTGCAAAGTCAACCTTTCATGCTGTCCACCAACCGCACGGCCAGCGTTGTCTTCTCACGCCATCGC  
 ACTCAACCGCTACCTGAAGGTGGTGCAGCCCCACCACGTGCTGAGCCGTGCTTCCGTGGGGGAGCTGCC  
 CGGGTGGCCGGGGGACTCTGGGTGGGCATCTGCTCCTCAACGGGCACCTGCTCCTGAGCACCTTCTCCG  
 GCCCTCCTGCCTCAGCTACAGGTGGGCACGAAGCCCTCGGCCTCGCTCCGCTGGCACCAGGCACTGTA  
 CCTGCTGGAGTTCTTCTGCCACTGGCGCTCATCTTTTGTATTGTGAGCATTGGGCTCACCATCCGG  
 AACCGTGGTCTGGGCGGGCAGGCAGGCCCGCAGAGGGCCATGCGTGTGCTGGCCATGGTGGTGGCCGTCT  
 ACACCATCTGCTTCTTGGCCAGCATCATCTTGGCATGGCTTCCATGGTGGCTTCTGGCTGTCCGCTG  
 CCGCTCCCTGGACCTCTGCACACAGCTCTTCCATGGCTCCCTGGCCTTACCTACCTCAACAGTGTCTG  
 GACCCCGTGTCTACTGCTTCTTAGCCCAACTTCTCCACCAGAGCCGGCCCTGCTGGGCCTCACGC  
 GGGCCCGCAGGGCCAGTGAGCGACGAGAGCTCCTACCAACCTCCAGGCAGTGGCGCTACCGGGAGGC  
 CTCTAGGAAGGCGGAGGCCATAGGGAAGCTGAAAGTGCAGGGCGAGGTCTCTTGAAAAGGAAGGCTCC  
 TCCAGGGC

**ACGCGT**ACGCGGCCGCTCGAGCAGAACTCATCTCAGAAGAGGATCTGGCAGCAATGATATCTGGATT  
 ACAAGGATGACGACGATAAGGTTTAA

**Protein Sequence:**

>RC222098 representing NM\_148962  
 Red=Cloning site Green=Tags(s)

MLCHRRGQLIVPIIPLCPEHSCRGRRLQNLISGPWPQPMELHNLSSPSPSLSSSVLPPSFSPSPSSAPS  
 AFTTVGGSSGGPCHPTSSSLVSAFLAPILALEFVLGLVGNLALFIFCIHTRPWSNTVFLVSLVAADFL  
 LISNLPLRVDYLLHETWRFGAAACKVNLFMLSTNRTASVVFLTAIALNRYLKVVQPHHVL SRASVGAAA  
 RVAGGLWVGILLNGLLLSTFSGPSCLSYRVGTKPSASLRWHQALYLLEFFLPLALILFAIVSIGLTIR  
 NRGLGGQAGPQRAMRVLAMVVAVYTICFLPSIIFGMASMVAFWLSACRSLDLCTQLFHGSLAFTYLNSVL  
 DPVLYCFSSPNFLHQSRALLGLTRGRQGPVDESSYQPSRQWRYREASRKAEAIGKLVQGEVSLEKEGS  
 SQG

**TR**TRPLEQKLISEEDLAANDILDYKDDDDKV

**Chromatograms:**

[https://cdn.origene.com/chromatograms/mg2620\\_d05.zip](https://cdn.origene.com/chromatograms/mg2620_d05.zip)

**Restriction Sites:**

Sgfl-Mlul

**Cloning Scheme:**


**ACCN:** NM\_148962

**ORF Size:** 1269 bp

**OTI Disclaimer:** The molecular sequence of this clone aligns with the gene accession number as a point of reference only. However, individual transcript sequences of the same gene can differ through naturally occurring variations (e.g. polymorphisms), each with its own valid existence. This clone is substantially in agreement with the reference, but a complete review of all prevailing variants is recommended prior to use. [More info](#)

**OTI Annotation:** This clone was engineered to express the complete ORF with an expression tag. Expression varies depending on the nature of the gene.

**Components:** The ORF clone is ion-exchange column purified and shipped in a 2D barcoded Matrix tube containing 10ug of transfection-ready, dried plasmid DNA (reconstitute with 100 ul of water).

- Reconstitution Method:**
1. Centrifuge at 5,000xg for 5min.
  2. Carefully open the tube and add 100ul of sterile water to dissolve the DNA.
  3. Close the tube and incubate for 10 minutes at room temperature.
  4. Briefly vortex the tube and then do a quick spin (less than 5000xg) to concentrate the liquid at the bottom.
  5. Store the suspended plasmid at -20°C. The DNA is stable for at least one year from date of shipping when stored at -20°C.

**RefSeq:** [NM\\_148962.4](#)

**RefSeq Size:** 1820 bp

**RefSeq ORF:** 1272 bp

**Locus ID:** 165140

**UniProt ID:** [Q8TDS5](#)

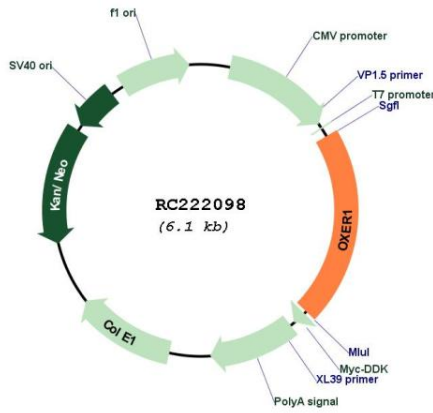
**Cytogenetics:** 2p21

**Protein Families:** Druggable Genome, GPCR, Transmembrane

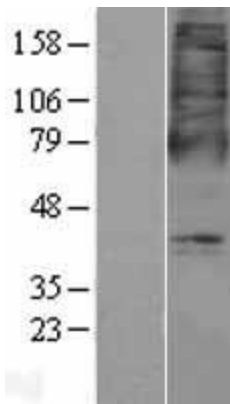
**MW:** 45.6 kDa

**Gene Summary:** Receptor for eicosanoids and polyunsaturated fatty acids such as 5-oxo-6E,8Z,11Z,14Z-eicosatetraenoic acid (5-OXO-ETE), 5(S)-hydroperoxy-6E,8Z,11Z,14Z-eicosatetraenoic acid (5(S)-HPETE) and arachidonic acid. Seems to be coupled to the G(i)/G(o), families of heteromeric G proteins.[UniProtKB/Swiss-Prot Function]

**Product images:**



Circular map for RC222098



Western blot validation of overexpression lysate (Cat# [LY403454]) using anti-DDK antibody (Cat# [TA50011-100]). Left: Cell lysates from untransfected HEK293T cells; Right: Cell lysates from HEK293T cells transfected with RC222098 using transfection reagent MegaTran 2.0 (Cat# [TT210002]).