

Product datasheet for **RC222088**

CDC42EP1 (NM_152243) Human Tagged ORF Clone

Product data:

Product Type: Expression Plasmids
Product Name: CDC42EP1 (NM_152243) Human Tagged ORF Clone
Tag: Myc-DDK
Symbol: CDC42EP1
Synonyms: BORG5; CEP1; MSE55
Mammalian Cell Selection: Neomycin
Vector: pCMV6-Entry (PS100001)
E. coli Selection: Kanamycin (25 ug/mL)
ORF Nucleotide Sequence: >RC222088 representing NM_152243
 Red=Cloning site Blue=ORF Green=Tags(s)

TTTTGTAATACGACTCACTATAGGGCGGCCGGAATTCGTCGACTGGATCCGGTACCGAGGAGATCTGCC
 GCC**CGATCGCC**

ATGCCCGCCCCAGGGGGCAGAGGGCCGCCACCATGAGCCTGGGCAAGCTCTCGCTGTGGGCTGGG
 TGTCCAGTTCACAGGGAAAGAGGGCGGTGACTGCAGACATGATCAGCCACCCACTCGGGGACTTCCGCCA
 CACCATGCATGTGGGCGGTGGCGGGATGTCTTCGGGGACACGTCCTTCTCAGCAACCACGGTGGCAGC
 TCCGGGAGACCCATCGCTCACCCGCAGTTCCTGGCCAAGAAGCTGCAGCTGGTGGGAGGGTGGGGG
 CGCCCCCGGAGGATGGCATCTCCCCTGACCCCTCCCGGCTCCACCGGCCATCTCCCCATCATCAA
 GAACGCCATCTCCTGCCCCAGCTCAACCAGGCCGCTACGACAGCCTCGTGGTTGGCAAGCTCAGCTTC
 GACAGCAGCCCCACAGCTCCACGGACGGCCACTCCAGCTACGGCCTGGACTCTGGGTTCTGCACCATCT
 CCCGCCTGCCCGCTCGGAAAAGCCGATGACCAGACCGGGATGGTTCCCTTCCCCTCTGAGCCCGGGCT
 TCGCCGCTCTGACTCTCTTGTCTTCCGCTGGACCTCGACCTTGGGCCCTACTCCTCAGCGAGCTG
 CTAGGGGTGATGAGCCTCCAGAAGCCCTGCAGCTGAGACTCCAGCCCCGCTGCAAACCCCCAGCCC
 CTACTGCAAACCCACGGGTCTGCTGCAAACCCCCAGCCACTACTGCAAACCCCCAGCGCTGCTGC
 AAACCCCTCAGCACCTGCCGAACCCACGGGTCTGCTGCAAATCCCCAGCCCCTGCCGAAGTCCAGCC
 ACACCCATGGACTGTCCAAATGGGGTAACAGCTGGGTGGGCCAGTGGCTGAGTGAAGTCCAGCC
 CAGTGGGAGGGGTCCCCGAGGACCTGCTGGCCCTGCCCTCGGCAGGCACTGGGGAGCAGGCTGGGATGG
 CGGCCACCACTACCCAGAGATGGATGCGCGCAGGAGCGGGTGGAGGTGCTGCCCAAGCCCGGGCTCC
 TGGGAGAGCCTGGACGAAGAGTGGAGGGCGCCCCAGGCAGGCAGGACCCAGTCCCCAGCACAGTGC
 AAGCAAACACCTTTGAATTTGCGGATGCTGAGGAGGATGATGAGGTCAAGGTG

ACGGTACGGGGCGCTCGAGCAGAACTCATCTCAGAAGAGGATCTGGCAGCAAATGATATCCTGGATT
 ACAAGGATGACGACGATAAGGTTTAA



[View online >](#)

Protein Sequence: >RC222088 representing NM_152243
Red=Cloning site Green=Tags(s)

MPGPQGGGAATMSLGKLSVGVWSSSQGKRRLTADMISHPLGDFRHTMHVGRGGDVFGDTSFLSNHGGS
 SGSTHRSPRSFLAKKLQLVRRVGGAPRRMASPPAPSPAPPASPIIKNAISLPQLNQAAYDSL VVGKLSF
 DSSPTSSTDGHSSYGLDSGFCTISRLPRSEKPHDRDRDGSFPSEPLRRSDLLSFRLLDLGSPLLSEL
 LGVMSLPEAPAAETPAPAANPPAPTANPTGPAANPPATTANPPAPAANPSAPAATPTGPAANPPAPAASS
 TPHGHCPNGVTAGLGPVAEVKSSPVGGGPRGPAGPALGRHWGAGWDGGHHYPEMDARQERVEVLPQARAS
 WESLDEEWRAQAGSRTVPSTVQANTFEFADAEDDEVK

TRTRPLEQKLISEEDLAANDILDYKDDDDK

Chromatograms: https://cdn.origene.com/chromatograms/mk6566_g04.zip

Restriction Sites: SgfI-MluI

Cloning Scheme:



ACCN: NM_152243

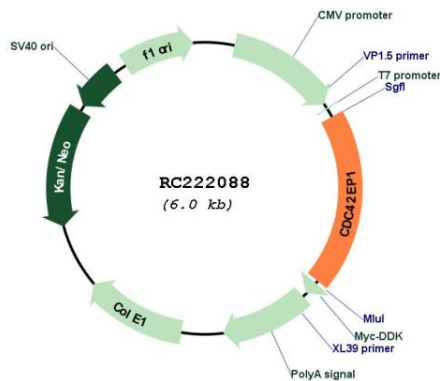
ORF Size: 1173 bp

OTI Disclaimer: Due to the inherent nature of this plasmid, standard methods to replicate additional amounts of DNA in E. coli are highly likely to result in mutations and/or rearrangements. Therefore, OriGene does not guarantee the capability to replicate this plasmid DNA. Additional amounts of DNA can be purchased from OriGene with batch-specific, full-sequence verification at a reduced cost. Please contact our customer care team at custsupport@origene.com or by calling 301.340.3188 option 3 for pricing and delivery.

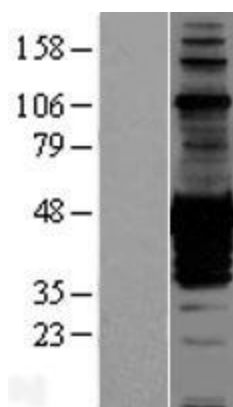
The molecular sequence of this clone aligns with the gene accession number as a point of reference only. However, individual transcript sequences of the same gene can differ through naturally occurring variations (e.g. polymorphisms), each with its own valid existence. This clone is substantially in agreement with the reference, but a complete review of all prevailing variants is recommended prior to use. [More info](#)

OTI Annotation:	This clone was engineered to express the complete ORF with an expression tag. Expression varies depending on the nature of the gene.
Components:	The ORF clone is ion-exchange column purified and shipped in a 2D barcoded Matrix tube containing 10ug of transfection-ready, dried plasmid DNA (reconstitute with 100 ul of water).
Reconstitution Method:	<ol style="list-style-type: none"> 1. Centrifuge at 5,000xg for 5min. 2. Carefully open the tube and add 100ul of sterile water to dissolve the DNA. 3. Close the tube and incubate for 10 minutes at room temperature. 4. Briefly vortex the tube and then do a quick spin (less than 5000xg) to concentrate the liquid at the bottom. 5. Store the suspended plasmid at -20°C. The DNA is stable for at least one year from date of shipping when stored at -20°C.
RefSeq:	<u>NM_152243.3</u>
RefSeq Size:	2135 bp
RefSeq ORF:	1176 bp
Locus ID:	11135
UniProt ID:	<u>Q00587</u>
Cytogenetics:	22q13.1
Domains:	PBD
MW:	40.1 kDa
Gene Summary:	CDC42 is a member of the Rho GTPase family that regulates multiple cellular activities, including actin polymerization. The protein encoded by this gene is a CDC42 binding protein that mediates actin cytoskeleton reorganization at the plasma membrane. This protein is secreted and is primarily found in bone marrow. [provided by RefSeq, Jul 2008]

Product images:



Circular map for RC222088



Western blot validation of overexpression lysate (Cat# [LY407674]) using anti-DDK antibody (Cat# [TA50011-100]). Left: Cell lysates from untransfected HEK293T cells; Right: Cell lysates from HEK293T cells transfected with RC222088 using transfection reagent MegaTran 2.0 (Cat# [TT210002]).