

Product datasheet for **RC222085**

YEATS2 (NM_018023) Human Tagged ORF Clone

Product data:

Product Type:	Expression Plasmids
Product Name:	YEATS2 (NM_018023) Human Tagged ORF Clone
Tag:	Myc-DDK
Symbol:	YEATS2
Synonyms:	FAME4
Mammalian Cell Selection:	Neomycin
Vector:	pCMV6-Entry (PS100001)
E. coli Selection:	Kanamycin (25 ug/mL)
ORF Nucleotide Sequence:	>RC222085 representing NM_018023 Red=Cloning site Blue=ORF Green=Tags(s)

TTTTGTAATACGACTCACTATAGGGCGGCCGGAATTCGTCGACTGGATCCGGTACCGAGGAGATCTGCC
GCC**CGATCGCC**

ATGCTGGAATCAAGCGAACCATCAAAGAAACCGACCCTGATTACGAGGATGTATCTGTGGCCCTTCCAA
ATAAGCGGCATAAAGCAATTGAGAATTCAGCTCGAGATGCTGCTGTGCAGAAGATTGAGACTATTATCAA
AGAACAGTTTCTTGAATGAAGAATAAGGAACATGAAATTGAAGTCATTGACCAGCGACTGATTGAA
GCAAGAAGGATGATGGATAAACTGCGTGCCTGCATTGTAGCAAATACTATGCTTCTGCAGGTCTTCTAA
AAGTTTCTGAGGGATCAAAGACATGTGATAACAATGGTTTTAATCATCCTGCTATCAAGAAATTTTGGAA
ATCACCATCTAGGTCATCATCTCCTGCCAATCAGAGAGCAGAAACACCATCAGCCAATCATTAGAAAGT
GATTCTTTATCTCAGCACAATGACTTCTTATCTGACAAAGATAATAACAGCAATATGGATATAGAGGAAA
GACTCTCAAACAACATGGAGCAGAGACCAAGCCGAAATACTGGAAGGGATACTTCTAGAATTACTGGCTC
CCATAAAACAGAACAGCGGAATGCTGATCTCACAGATGAGACTTCACGACTTTTTGTAAAGAAAACAATA
GTAGTGGGCAATGTGCAAGTATATACCTCCGGATAAGAGGGAAGAAAATGACCAGTCAACTCATAAGT
GGATGGTATATGTCGAGGGTCCCGTAGAGAACCAGCATTAAATCATTTTGTCAAGAAGGTTTGGTTCTT
CCTTCATCCTAGCTATAAACCAATGACCTTGTGGAAGTTAGAGAGCCTCCTTTTACCTGACCAGAAGA
GGCTGGGTGAGTTTCCCGTCAGAGTTCAAGTTCAATTTAAGGACAGCCAGAACAAGCGGATAGATATCA
TACATAATCTGAAGCTGGATAGAATTACTGGCTTGCAGACTCTTGGAGCAGAGACGGTAGTGGATGT
TGAAGTCCATCGCCATTCTCTCGGAGAAGACTGTATCTATCCTCAGTCCCTCGGAGTCTGACATCTGTAT
GCCCTCCATCTTTGCCTTTGACCATCCAGCCCCAGTAAAAGCTTCTTACCAATAAAGCAGTCACATG
AGCCAGTACCGATACCTCTGTGGAGAAAGGATCCAGCTAGCACTGAAGCTGAACGACACTCCGTT
TTATGCTTTGCCATCTTCATTGGAAGAACACCCACCAAAATGACTACATCCAGAAAGTTACCTTTTGT
TCCCATGGCAATTCAGCTTTCCAGCCAATAGCATCAAGCTGCAAAATTGTTCCACAAAGTCAGGTTCCCTA
ATCCTGAGTCACTGGAAATCCTTCCAGCCCATCACCATGAGCTGCAAGATTGTGTGAGTTCCCAAT
ATCAACTCAAGCCCATCACCATTGCCTCGAACCCGACTTCCACTCCAGTCCAGTGAAGCAAGGCACT



[View online »](#)

Protein Sequence: >RC222085 representing NM_018023
Red=Cloning site Green=Tags(s)

```

MSGIKRTIKETDPDYEDVSVALPNKRHKAIENSARDAAVQKIETIIKEQFALEMKNKEHEIEVIDQRLIE
ARRMMDKLRACIVANYYASAGLLKVSEGSKTCDTMVFNHPAIKKFLESPSRSSSPANQRAETPSANHSES
DSL SQHNDFLSDKDNNSNMDIEERLSNNMEQRP SRNTGRDTSRITGSHKTEQRNADLTDET SRL FVKKTI
VVGNVSKYIPDPKREENDQSTHKWVYVGRSRREPSINHFVKKVWFFLHPSYKPNDLVEVREPPFHLTRR
GWGEFPVRVQVHFKDSQNKRIDIIHNLKLDRTY TGLQTLGAETVVDVDELHRHSLGEDCIYQSSSESDISD
APPSLPLTIPAPVKASSPIKQSHEPVPDTSVEKGF PASTEAEERHTPFYALPSSLERTPTKMTTSQKVTFC
SHGNSAFQPIASSCKIVPQSQVNPESP GSKSFQPI TMSCKIVSGSPISTPSPSPLRPTPTSTPVHVKQGT
AGSVINNPYVIMDKQPGQVIGATTPSTGSP TNKISTASQVSQGTGSPVPKIHGSSFVTSTVKQEDSLFAS
MPPLCPIGISHPKVQSPK PITGGLGAFTKVI IKQEPGEAPHVPATGAASQSPLPQYVTVKGGHMI AVSPQK
QVITPGEGIAQSAKVQPSKVVGVPVGSALPSTVKQAVAI SGGQILVAKASSSVSKAVGPKQVVTQGVAKA
IVSGGGGTIVAQPVQTLTKAQVT AAGPQKSGS QGSVMATLQLPATNLANLANLPPGTKLYLTTNSKNPSG
K GKLLLIPQGA ILRATNNANLQSGSAASGGSGAGGGGGGGGGGGSGGGGGTGGGGGTAGGGTQSTAGP
GGISQHLTYTSYILKQTPQGTFLVGQPSPTSGKQLTTGSVVQGT LGVSTSSAQGQQLKVISGQKTTLF
TQAAHGGQASLMKISDSTLKTVPATSQLSKPGTTMLRVAGGVIT TATSPAVALSANGPAQQSEGMAPVSS
STVSSVTKTSGQQVCVSQATVGTCKAATPTVVSATSLVPTPNPISGKATVSGLLKIHSSQSSPQQAVLT
IPSQ LKPLSVNTSGGVQ TILMPVNKVVQSFSTSKPPAILPVAAPTVPVPS SAPA AVAKVKTEPETPGPSC
LSQEGQTA VKTEESSELGNVVIKIDHLETIQQLTAVVKKIPLITAKSEDASCFS AKSVEQYYGWNIGKR
RAAEWQRAMTMRKVLQEILEKNPRFHHL TPLKTKHIAHWCRCHGYTPDPESLRNDGDSIEDVLTQIDSE
PECPSSFSADNL CRKLEDLQQFQKREPENEEVDILSLSEPVKINIKKEQEEKQEEVKFYL PPTPGSEF
IGDVTQKIGITLQPVALHRNVYASVVEDMILKATEQLVNDILRQALAVGYQTASHNRIPEKITVSNIHQA
ICNIPFLDFLT NKHMGI LNEDQ
    
```

TRTRPLEQKLISEEDLAANDILDYKDDDDKV

Chromatograms: https://cdn.origene.com/chromatograms/mk8039_f11.zip

Restriction Sites: SgfI-MluI

Cloning Scheme:

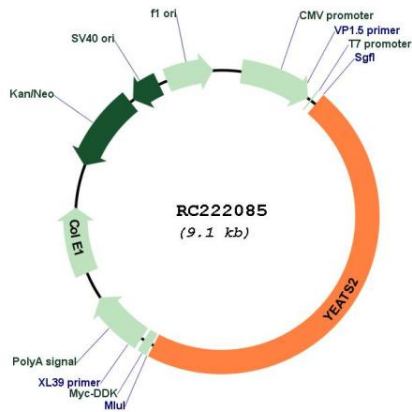


ACCN: NM_018023

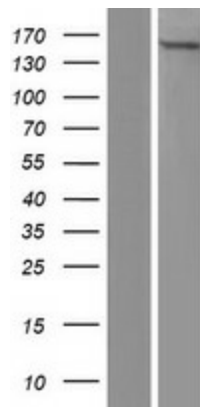
ORF Size: 4266 bp

OTI Disclaimer:	The molecular sequence of this clone aligns with the gene accession number as a point of reference only. However, individual transcript sequences of the same gene can differ through naturally occurring variations (e.g. polymorphisms), each with its own valid existence. This clone is substantially in agreement with the reference, but a complete review of all prevailing variants is recommended prior to use. More info
OTI Annotation:	This clone was engineered to express the complete ORF with an expression tag. Expression varies depending on the nature of the gene.
Components:	The ORF clone is ion-exchange column purified and shipped in a 2D barcoded Matrix tube containing 10ug of transfection-ready, dried plasmid DNA (reconstitute with 100 ul of water).
Reconstitution Method:	<ol style="list-style-type: none">1. Centrifuge at 5,000xg for 5min.2. Carefully open the tube and add 100ul of sterile water to dissolve the DNA.3. Close the tube and incubate for 10 minutes at room temperature.4. Briefly vortex the tube and then do a quick spin (less than 5000xg) to concentrate the liquid at the bottom.5. Store the suspended plasmid at -20°C. The DNA is stable for at least one year from date of shipping when stored at -20°C.
RefSeq:	NM_018023.3 , NP_060493.3
RefSeq Size:	6501 bp
RefSeq ORF:	4269 bp
Locus ID:	55689
UniProt ID:	Q9ULM3
Cytogenetics:	3q27.1
Domains:	YEATS
MW:	150.6 kDa
Gene Summary:	Summary: The protein encoded by this gene is a scaffolding subunit of the ATAC complex, which is a complex with acetyltransferase activity on histones H3 and H4. Alternative splicing results in multiple transcript variants encoding different isoforms. [provided by RefSeq, May 2017]

Product images:



Circular map for RC222085



Western blot validation of overexpression lysate (Cat# [LY413386]) using anti-DDK antibody (Cat# [TA50011-100]). Left: Cell lysates from untransfected HEK293T cells; Right: Cell lysates from HEK293T cells transfected with RC222085 using transfection reagent MegaTran 2.0 (Cat# [TT210002]).