

Product datasheet for RC222083

INPP5A (NM_005539) Human Tagged ORF Clone

Product data:

Product Type:	Expression Plasmids
Product Name:	INPP5A (NM_005539) Human Tagged ORF Clone
Tag:	Myc-DDK
Symbol:	INPP5A
Synonyms:	5PTASE
Mammalian Cell Selection:	Neomycin
Vector:	pCMV6-Entry (PS100001)
E. coli Selection:	Kanamycin (25 ug/mL)
ORF Nucleotide Sequence:	>RC222083 ORF sequence Red=Cloning site Blue=ORF Green=Tags(s)

TTTTGTAATACGACTCACTATAGGGCGGCCGGAATTCGTCGACTGGATCCGGTACCGAGGAGATCTGCC
GCC**CGATCGCC**

ATGGCGGGGAAGGCGGCCGCCCGGGCACCGCGGTGCTGCTGGTACGGCCAACGTGGGCTCGCTCTTCG
ACGACCCAGAAAACCTGCAGAAGAACTGGCTTCGGGAATTTACCAGGTCGTGCACACACAAGCCGCA
CTTCATGGCCTTGCACTGTCAGGAGTTTGGAGGAAGAAGTACGAGGCCCTCCATGTCCCACGTGGACAAG
TTCGTCAAAGAAGTATTGTCGAGTGATGCGATGAAAGAATATAACAGGGCTCGAGTCTACCTGGATGAAA
ACTACAAATCCCAGGAGCACTTCACGGCACTAGGAAGCTTTTATTTTCTCATGAGTCTTAAAAAAT
CTACAGTTTGACTTTAAAGCTAAGAAGTATAGAAAGGTCGCTGGCAAAGAGATCTACTCGGATACCTTA
GAGAGCACGCCCATGCTGGAGAAGGAGAAGTTCCGCAAGGACTACTTCCCGAGTGCAAATGGTCAAGAA
AAGGCTTCATCCGGACGAGGTGGTGCATTGCGACTGTGCCTTTGACTTGGTGAATATCCATCTTTTCCA
TGATGCTTCCAATCTGGTCGCCTGGGAAACAAGCCCTTCCGTGTACTCGGAATCCGGCACAAGGCACTG
GGCTACGTGCTGGACAGAATCATTGATCAGCGATTCGAGAAGGTTTCTACTTTGTATTTGGTGATTTCA
ACTTCCGGCTGGATTCCAAGTCCGTGCTGGAGACGCTCTGCACAAAAGCCACCATGCAGACGGTCCGGGC
CGCCGACACCAATGAAGTGGTGAAGTCAATTTTCGTGAGTCGGACAACGACCGGAAGGTTATGCTCCAG
TTAGAAAAGAACTCTTCGACTACTTCAACCAGGAGTTTCCGAGACAACAACGGCACCCGCTCTTGG
AGTTTGACAAGGAGTTGCTGTCTTTAAGGACAGACTGTATGAACTGGACATCTCGTTCCTCCAGCTA
CCCGTACAGTGAGGACGCCCGCCAGGGTGAAGTACATGAACACCCGGTGCCGAGCCTGGTGTGACCCG
ATCCTCATGTCCCGTCTGCCAAGGAGCTGGTGTGCGGTGCGGAGAGCGAGGAGAAGGTTGTACCTATG
ACCACATTTGGGCCAACGTCTGCATGGGAGACCACAAGCCGTGTTCTGGCCTTCCGAATCATGCCCG
GGCAGGTAACCTCATGCCATGTGCACAAGTGTGTGCTGTCAG

ACGCGTACGCGGCCGCTCGAGCAGAAAACATCTCAGAAGAGGATCTGGCAGCAAATGATATCCTGGATT
ACAAGGATGACGACGATAAGGTTTAA



[View online »](#)

Protein Sequence: >RC222083 protein sequence
Red=Cloning site Green=Tags(s)

MAGKAAAPGTAVLLVTANVGSLLFDDPENLQKNWLEFYQVVVHTHKPHFMALHCQEFGGKNYEASMSHVDK
 FVKELLSSDAMKEYNRARVYLDENYKSQEHFTALGSFYFLHESLKNIIYQFDKAKKYRKVAGKEIYSDTL
 ESTPMLKEKEKFPQDYFPECKWSRKGFIIRTRWCIADCAFDLVNIHLFHDASNLVAVETSPSVYSGIRHKAL
 GYVLDRIIDQRFEKVSFYFVGFDFNFRLLDSKSVVETLCTKATMQTVRAADTNEVVKLIFRESNDNRKVMLQ
 LEKLLFDYFNQEVFRDNGTALLEFDKELSVFKDRLYELDISFPPSYSEDARQGEQYMNTRCPAWCDR
 ILMSPSAKELVLRSESEEKVVTYDHIGPNVCMGDHKPVFLAFRIMPAGAKPHAHVHKCCVVQ

TRTRPLEQKLISEEDLAANDILDYKDDDDKV

Chromatograms: https://cdn.origene.com/chromatograms/mk6554_h02.zip

Restriction Sites: SgfI-MluI

Cloning Scheme:



* The last codon before the Stop codon of the ORF

ACCN: NM_005539

ORF Size: 1236 bp

OTI Disclaimer: The molecular sequence of this clone aligns with the gene accession number as a point of reference only. However, individual transcript sequences of the same gene can differ through naturally occurring variations (e.g. polymorphisms), each with its own valid existence. This clone is substantially in agreement with the reference, but a complete review of all prevailing variants is recommended prior to use. [More info](#)

OTI Annotation: This clone was engineered to express the complete ORF with an expression tag. Expression varies depending on the nature of the gene.

Components: The ORF clone is ion-exchange column purified and shipped in a 2D barcoded Matrix tube containing 10ug of transfection-ready, dried plasmid DNA (reconstitute with 100 ul of water).

Reconstitution Method:

1. Centrifuge at 5,000xg for 5min.
2. Carefully open the tube and add 100ul of sterile water to dissolve the DNA.
3. Close the tube and incubate for 10 minutes at room temperature.
4. Briefly vortex the tube and then do a quick spin (less than 5000xg) to concentrate the liquid at the bottom.
5. Store the suspended plasmid at -20°C. The DNA is stable for at least one year from date of shipping when stored at -20°C.

Note: Plasmids are not sterile. For experiments where strict sterility is required, filtration with 0.22um filter is required.

RefSeq: [NM_005539.5](#)

RefSeq Size: 2938 bp

RefSeq ORF: 1239 bp

Locus ID: 3632

UniProt ID: [Q14642](#)

Cytogenetics: 10q26.3

Domains: IPPc, Exo_endo_phos

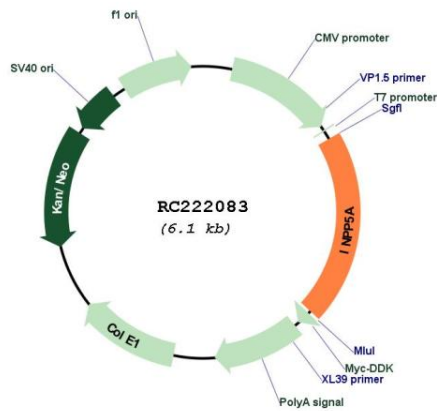
Protein Families: Druggable Genome

Protein Pathways: Inositol phosphate metabolism, Metabolic pathways, Phosphatidylinositol signaling system

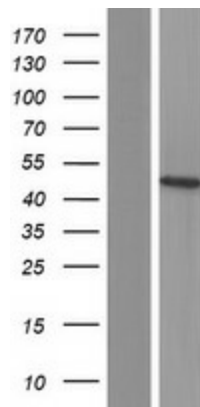
MW: 47.8 kDa

Gene Summary: The protein encoded by this gene is a membrane-associated type I inositol 1,4,5-trisphosphate (InsP3) 5-phosphatase. InsP3 5-phosphatases hydrolyze Ins(1,4,5)P3, which mobilizes intracellular calcium and acts as a second messenger mediating cell responses to various stimulation. [provided by RefSeq, Jul 2008]

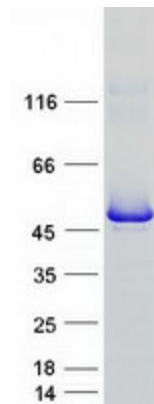
Product images:



Circular map for RC222083



Western blot validation of overexpression lysate (Cat# [LY417238]) using anti-DDK antibody (Cat# [TA50011-100]). Left: Cell lysates from untransfected HEK293T cells; Right: Cell lysates from HEK293T cells transfected with RC222083 using transfection reagent MegaTran 2.0 (Cat# [TT210002]).



Coomassie blue staining of purified INPP5A protein (Cat# [TP322083]). The protein was produced from HEK293T cells transfected with INPP5A cDNA clone (Cat# RC222083) using MegaTran 2.0 (Cat# [TT210002]).