

Product datasheet for RC222076

LAMC2 (NM_005562) Human Tagged ORF Clone

Product data:

Product Type:	Expression Plasmids
Product Name:	LAMC2 (NM_005562) Human Tagged ORF Clone
Tag:	Myc-DDK
Symbol:	LAMC2
Synonyms:	B2T; BM600; CSF; EBR2; EBR2A; LAMB2T; LAMNB2
Mammalian Cell Selection:	Neomycin
Vector:	pCMV6-Entry (PS100001)
E. coli Selection:	Kanamycin (25 ug/mL)
ORF Nucleotide Sequence:	>RC222076 representing NM_005562 Red=Cloning site Blue=ORF Green=Tags(s)

TTTTGTAATACGACTCACTATAGGGCGGCCGGAATTCGTCGACTGGATCCGGTACCGAGGAGATCTGCC
GCC**CGATCGCC**

ATGCTGCGCTCTGGCTGGGCTGCTGCCTCTGCTTCTCGCTCCTCTGCCCGCAGCCGGGCCACCTCCA
GGAGGGAAGTCTGTGATTGCAATGGGAAGTCCAGGCAGTGTATCTTTGATCGGAACTTCACAGACAAAC
TGTAATGGATCCGCTGCCTCACTGCAATGACAACACTGATGGCATTCACTGCGAGAAGTCAAGAAT
GGCTTTACCGGCACAGAGAAAGGGACCGCTGTTGCCCTGCAATTGTAACCTCAAAGGTTCTCTTAGTG
CTCGATGTGACAACTCTGGACGGTGCAGCTGTAACCAGGTGTGACAGGAGCCAGATGCGACCGATGCT
GCCAGGCTCCACATGCTCACGGATGCGGGGTGCACCCAAGACCAGAGACTGCTAGACTCCAAGTGTGAC
TGTGACCCAGCTGGCATCGCAGGGCCCTGTGACCGGGCCGCTGTGTCTGCAAGCCAGCTGTTACTGGAG
AACGCTGTGATAGGTGTGATCAGGTTACTATAATCTGGATGGGGGAACCCCTGAGGGCTGTACCCAGTG
TTTCTGCTATGGGCATTAGCCAGCTGCCCGAGCTCTGCAGAATACAGTGTCCATAAGATCACCTCTACC
TTTCATCAAGATGTTGATGGCTGGAAGGCTGTCCAACGAAATGGGTCTCTGCAAAGCTCCAATGGTCAC
AGCGCCATCAAGATGTGTTAGCTCAGCCCAACGACTAGACCTGTCTATTTGTGGCTCCTGCCAATT
TCTTGGGAATCAACAGGTGAGCTATGGGCAAAGCTGTCTTTGACTACCGTGTGGACAGAGGAGGCAGA
CACCCATCTGCCCATGATGTGATTCTGGAAGGTGCTGGTCTACGGATCACAGCTCCCTTGATGCCACTTG
GCAAGACTGCCTTGTGGGCTCACCAAGACTTACACATTCAGGTTAAATGAGCATCCAAGCAATAATTG
GAGCCCCAGCTGAGTTACTTTGAGTATCGAAGGTTACTGCGGAATCTCACAGCCCTCCGCATCCGAGCT
ACATATGGAGAATACAGTACTGGGTACATTGACAAATGTGACCCTGATTTAGCCCGCCCTGTCTCTGGAG
CCCCAGCACCCCTGGGTTGAACAGTGTATATGTCCTGTTGGGTACAAGGGGCAATTCTGCCAGGATTGTGC
TTCTGGCTACAAGAGAGATTGAGGAGACTGGGCCTTTTGGCACCTGTATTCTTGTAACTGTCAAGGG
GGAGGGGCTGTGATCCAGACACAGGAGATTGTTATTCAGGGGATGAGAATCCTGACATTGAGTGTGCTG
ACTGCCAATTGGTTTCTACAACGATCCGCACGACCCCGCAGCTGCAAGCCATGTCCTGTGATAACGG
GTTGAGCTGCTCAGTGTGCCGGAGACGGAGGAGTGGTGTGCAATAACTGCCCTCCCGGGTACCAGGT



GCCCCGTGTGAGCTCTGTGCTGATGGCTACTTTGGGGACCCCTTTGGTGAACATGGCCCAGTGAGGCCTT
GTCAGCCCTGTCAATGCAACAACAATGTGGACCCAGTGCCTCTGGGAATTGTGACCCGGCTGACAGGCAG
GTGTTTGAAGTGTATCCACAACACAGCCGGCATCTACTGCGACCAGTGCAAAGCAGGCTACTTCGGGGAC
CCATTGGCTCCCAACCCAGCAGACAAGTGTGAGCTTGAACCTGTAAACCCATGGGCTCAGAGCCTGTAG
GATGTCGAAGTGTGGCACCTGTGTTTGAAGCCAGGATTTGGTGGCCCCAACTGTGAGCATGGAGCATT
CAGCTGTCCAGCTTGCTATAATCAAGTGAAGATTCAGATGGATCAGTTTATGCAGCAGCTTCAGAGAATG
GAGGCCCTGATTTCAAAGGCTCAGGGTGGTGTGAGGAGTACCTGATACAGAGCTGGAAGGCAGGATGC
AGCAGGCTGAGCAGGCCCTTCAGGACATTCTGAGAGATGCCAGATTTTCAGAAGGTGCTAGCAGATCCCT
TGGTCTCCAGTTGGCCAAGGTGAGGAGCCAAGAGAACAGCTACCAGAGCCGCCTGGATGACCTCAAGATG
ACTGTGAAAAGAGTTCGGGCTCTGGGAAGTCAGTACCAGAACCGAGTTCGGGATACTCACAGGCTCATCA
CTCAGATGCAGCTGAGCCTGGCAGAAAGTGAAGCTTCTTGGGAAACACTAACATTCCTGCCTCAGACCA
CTACGTGGGGCCAAATGGCTTTAAAAGTCTGGCTCAGGAGGCCACAAGATTAGCAGAAAGCCACGTTGAG
TCAGCCAGTAACATGGAGCAACTGACAAGGAAACTGAGGACTATTCAAACAAGCCCTCTACTGGTGC
GCAAGGCCCTGCATGAAGGAGTCGGAAGCGGAAGCGGTAGCCCGACGGTGTGTGGTCAAGGGCTTGT
GGAAAAATGGAGAAAACCAAGTCCCTGGCCAGCAGTTGACAAGGGAGGCCACTCAAGCGGAAATTGAA
GCAGATAGGTCTTATCAGCACAGTCTCCGCCTCTGGATTCAAGTGTCTCGGCTTCAGGGAGTCAGTGATC
AGTCTTTTCAGGTGGAAGAAGCAAAAGAGGATCAAACAAAAGCGGATTCCTCTCAACGCTGGTAACCGAG
GCATATGGATGAGTTCAAGCGTACACAAAAGAATCTGGGAAACTGGAAAGAAGAAGCACAGCAGCTCTTA
CAGAATGGAAAAGTGGGAGAGAGAAAATCAGATCAGCTGCTTCCCGTGCCAATCTTGCTAAAAGCAGAG
CACAAGAAGCACTGAGTATGGGCAATGCCACTTTTTATGAAGTTGAGAGCATCCTTAAAACCTCAGAGA
GTTTGACCTGCAGGTGGACAACAGAAAAGCAGAAGCTGAAGAAGCCATGAAGAGACTCTCCTACATCAGC
CAGAAGGTTTCAGATGCCAGTGACAAGACCCAGCAAGCAGAAAGAGCCCTGGGGAGCGCTGCTGCTGATG
CACAGAGGGCAAAGAATGGGGCCGGGAGGCCCTGGAAATCTCCAGTGAGATTGAACAGGAGATTGGGAG
TCTGAACCTTGGAAAGCCAATGTGACAGCAGATGGAGCCTTGGCCATGGAAAAGGGACTGGCCTCTCTGAAG
AGTGAGATGAGGGAAGTGAAGGAGAGCTGGAAGGAAGGAGCTGGAGTTTGACACGAATATGGATGCAG
TACAGATGGTATTACAGAAGCCAGAAGGTTGATACCAGAGCCAAGAAGCTGGGGTTACAATCCAAGA
CACACTCAACACATTAGACGGCCTCCTGCATCTGATGGACCAGCCTCTCAGTGTAGATGAAGAGGGGCTG
GTCTTACTGGAGCAGAAGCTTCCCGAGCCAAGACCCAGATCAACAGCCAACCTGCGGCCATGATGTCAG
AGCTGGAAGAGAGGGCACGTGAGCAGAGGGCCACCTCCATTTGCTGGAGACAAGCATAGATGGGATTCT
GGCTGATGTGAAGAACTTGGAGAACATTAGGGACAACCTGCCCCAGGCTGCTACAATACCCAGGCTCTT
GAGCAACAG

ACGCGTACGCGGCGCTCGAGCAGAACTCATCTCAGAAGAGGATCTGGCAGCAAATGATATCCTGGATT
ACAAGGATGACGACGATAAGGTTTAA

Protein Sequence: >RC222076 representing NM_005562
 Red=Cloning site Green=Tags(s)

MPALWLGCCLCFSLLLPAARATSRREVDCNGKSRQCIFDRELHRQTGNNGFRCLNCNDNTDGIHCEKCKN
 GFYRHRERDRCLPCNCNSKGSLSARCDNSGRCSCKPGVTGARCDRCLPGFHMLTDAGCTQDQRLDLSKCD
 CDPAGIAGPCDAGRCVCKPAVTGERCDRCRSGYINLDGGNPEGCTQCFCYGHASACRSSAEYSVHKITST
 FHQDVGWKAQVRNGSPAKLQWSQRHQDVFSSAQRLDPVYFVAPAKFLGNQQVSYGQSLSFYRVRDRGGR
 HPSAHDVILEGAGLRITAPLMPLGKTLPCGLTKYTFRLNEHPSNNWSPQLSYFEYRRLLRNLTLRIRA
 TYGEYSTGYIDNVTLISARPVSGAPAPWVEQCICPVGYKQFCQDCASGYKRDSARLGPFGTCIPNCQCG
 GGACDPDGTDCYSGDENPDIECADCPIGFYNDPHDPRSCPCPCHNGFSCSVMPEEVEVNCNPPGVTG
 ARCELCADGYFGDPFGEHGPVPCPCQCNNVDPASAGNCDRLTGRCLKCIHNTAGIYCDQCKAGYFGD
 PLAPNPADKCRACNCPMGSEPVGCRSDGTCVCKPGFGGPNCEHGAFSCPACYNQVKIQMDQFMQQLQRM
 EALISKAQGGDGVVPDTELEGRMQAEQALQDILRDAQISEGASRSLGLQLAKVRSQENSYSRLDDLKML
 TVERVRALGSQYQNRVRDTHRLITQMQLSLAESEASLGNTNIPASDHVYGPNGFKSLAQEATRLAESHVE
 SASNMEQLTRETEDYSKQALSLVRKALHEGVGSGSGSPDGAVVQGLVEKLEKTKSLAQQLTREATQAEIE
 ADRSYQHSRLRLDVSRLQGVSDQSFQVEEAKRIKQKADSLSTLVTRHMDEFKRTQKNLGNWKEEAQQLL
 QNGKSGREKSDQLL SRANLAKSRAQEALSMGNATFYEVESILKNLREFDLQVDNRKAEAEAMKRLSYIS
 QKYSDASDKTQQAERALGSAAADAQRAKNGAGEALEISSEIEQEI GSLNLEANVTADGALAMEKGLASLK
 SEMREVEGELERKELEFDTNMDAVQMVITEAQKVDTRAKNAGVTIQDTLNTLDGLLHLMQPLSVDEEGL
 VLLEQKLSRAKTQINSQLRPMSELEERARQQRGHLHLLLET SIDGILADVKNLENIRDNLPPGCVNTQAL
 EQQ

TRTRPLEQKLISEEDLAANDILDYKDDDDKV

Chromatograms: https://cdn.origene.com/chromatograms/mg2939_b09.zip

Restriction Sites: SgfI-MluI

Cloning Scheme:



ACCN: NM_005562

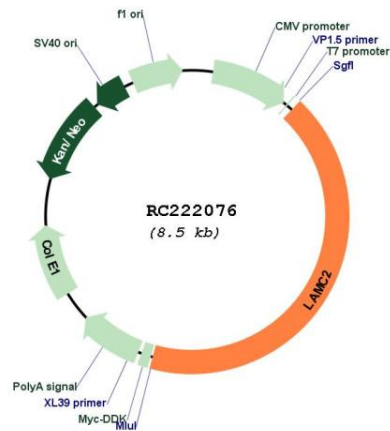
ORF Size: 3579 bp

OTI Disclaimer:	The molecular sequence of this clone aligns with the gene accession number as a point of reference only. However, individual transcript sequences of the same gene can differ through naturally occurring variations (e.g. polymorphisms), each with its own valid existence. This clone is substantially in agreement with the reference, but a complete review of all prevailing variants is recommended prior to use. More info
OTI Annotation:	This clone was engineered to express the complete ORF with an expression tag. Expression varies depending on the nature of the gene.
Components:	The ORF clone is ion-exchange column purified and shipped in a 2D barcoded Matrix tube containing 10ug of transfection-ready, dried plasmid DNA (reconstitute with 100 ul of water).
Reconstitution Method:	<ol style="list-style-type: none">1. Centrifuge at 5,000xg for 5min.2. Carefully open the tube and add 100ul of sterile water to dissolve the DNA.3. Close the tube and incubate for 10 minutes at room temperature.4. Briefly vortex the tube and then do a quick spin (less than 5000xg) to concentrate the liquid at the bottom.5. Store the suspended plasmid at -20°C. The DNA is stable for at least one year from date of shipping when stored at -20°C.
RefSeq:	NM_005562.1 , NP_005553.1
RefSeq Size:	5175 bp
RefSeq ORF:	3582 bp
Locus ID:	3918
UniProt ID:	Q13753
Cytogenetics:	1q25.3
Domains:	LamB, EGF_Lam
Protein Families:	Druggable Genome, Secreted Protein
Protein Pathways:	ECM-receptor interaction, Focal adhesion, Pathways in cancer, Small cell lung cancer
MW:	130.99 kDa

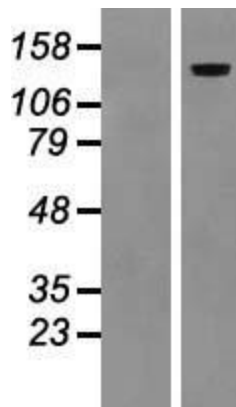
Gene Summary:

Laminins, a family of extracellular matrix glycoproteins, are the major noncollagenous constituent of basement membranes. They have been implicated in a wide variety of biological processes including cell adhesion, differentiation, migration, signaling, neurite outgrowth and metastasis. Laminins, composed of 3 non identical chains: laminin alpha, beta and gamma (formerly A, B1, and B2, respectively), have a cruciform structure consisting of 3 short arms, each formed by a different chain, and a long arm composed of all 3 chains. Each laminin chain is a multidomain protein encoded by a distinct gene. Several isoforms of each chain have been described. Different alpha, beta and gamma chain isomers combine to give rise to different heterotrimeric laminin isoforms which are designated by Arabic numerals in the order of their discovery, i.e. alpha1beta1gamma1 heterotrimer is laminin 1. The biological functions of the different chains and trimer molecules are largely unknown, but some of the chains have been shown to differ with respect to their tissue distribution, presumably reflecting diverse functions in vivo. This gene encodes the gamma chain isoform laminin, gamma 2. The gamma 2 chain, formerly thought to be a truncated version of beta chain (B2t), is highly homologous to the gamma 1 chain; however, it lacks domain VI, and domains V, IV and III are shorter. It is expressed in several fetal tissues but differently from gamma 1, and is specifically localized to epithelial cells in skin, lung and kidney. The gamma 2 chain together with alpha 3 and beta 3 chains constitute laminin 5 (earlier known as kalinin), which is an integral part of the anchoring filaments that connect epithelial cells to the underlying basement membrane. The epithelium-specific expression of the gamma 2 chain implied its role as an epithelium attachment molecule, and mutations in this gene have been associated with junctional epidermolysis bullosa, a skin disease characterized by blisters due to disruption of the epidermal-dermal junction. Two transcript variants resulting from alternative splicing of the 3' terminal exon, and encoding different isoforms of gamma 2 chain, have been described. The two variants are differentially expressed in embryonic tissues, however, the biological significance of the two forms is not known. Transcript variants utilizing alternative polyA_signal have also been noted in literature. [provided by RefSeq, Aug 2011]

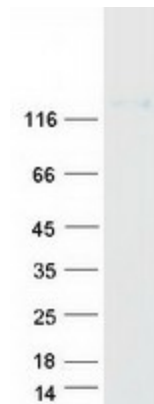
Product images:



Circular map for RC222076



Western blot validation of overexpression lysate (Cat# [LY417224]) using anti-DDK antibody (Cat# [TA50011-100]). Left: Cell lysates from untransfected HEK293T cells; Right: Cell lysates from HEK293T cells transfected with RC222076 using transfection reagent MegaTran 2.0 (Cat# [TT210002]).



Coomassie blue staining of purified LAMC2 protein (Cat# [TP322076]). The protein was produced from HEK293T cells transfected with LAMC2 cDNA clone (Cat# RC222076) using MegaTran 2.0 (Cat# [TT210002]).