

Product datasheet for RC222073

C1orf226 (NM_001085375) Human Tagged ORF Clone

Product data:

Product Type:	Expression Plasmids
Product Name:	C1orf226 (NM_001085375) Human Tagged ORF Clone
Tag:	Myc-DDK
Symbol:	C1orf226
Mammalian Cell Selection:	Neomycin
Vector:	pCMV6-Entry (PS100001)
E. coli Selection:	Kanamycin (25 ug/mL)
ORF Nucleotide Sequence:	>RC222073 representing NM_001085375 Red=Cloning site Blue=ORF Green=Tags(s)

TTTTGTAATACGACTCACTATAGGGCGGCCGGAATTCGTCGACTGGATCCGGTACCGAGGAGATCTGCC
GCC**CGATCGCC**

ATGTTTGAGAATTTGAACACAGCCCTCACTCAAAGCTCCAGGCCAGCCGCTCCTTCCCCACTTGTCCA
AGCCCGTGGCCCCGGCTCTGCCCTCTGGGCTCTGGTGAGCCTGGGGGCCAGGACTCTGGGTGGGCAG
CAGCCAGCACCTCAAGAACCTGGGCAAAGCCATGGGGCCAAAGTGAATGACTTCCTGAGGAGAAAGGAG
CCCTCCAGCCTGGGCAGTGTGGGTGTGACAGAGATCAACAAGACTGCAGGAGCACAGCTGGCCAGTGGGA
CTGACCGGGCTCCAGAGGCTTGGCTAGAGGATGAAAGGTCAGTCCTGCAAGAAACATTTCTCGGCTGGA
TCCTCCACCTCCATAAACCAGAAAGCGAACCCTCGGGCCCTGAAGACCACCAGGACATGCTGATTTCA
TCACAGCCTGTCTCAGCAGTCTGGAGTATGGGACAGAGCCATCACCTGGGCAGGCCCAGGACTCCGCTC
CCTGCCCCAGCCTGACGTCCCAGCAGACGCTTACAGCCAGAGGCCACCATGGAAAGAGAAGAGAGAGG
CAAAGTTCTGCCAATGGAGAGGTTTCCCTGTGACGTACCTGACCTAATCCACAAGGATAGCCAGGACGAA
TCCAAGCTAAAGATGACTGAGTGCAGAAGGGCCTCCTCCCCAGCCTTATCGAGAGGAATGGCTTCAAAC
TCAGCTTGAGCCCATCAGCCTGGCTGAGTCTGGGAGGATGGCAGCCCCCTCCTCAGGCACGGACCTC
CAGCCTCGACAATGAGGGCCCTCACCCAGACCTGCTGTCTTTGAA

ACGCGTACGCGGCCGCTCGAGCAGAAACTCATCTCAGAAGAGGATCTGGCAGCAAATGATATCCTGGATT
ACAAGGATGACGACGATAAGGTTTAA



[View online »](#)

Reconstitution Method:

1. Centrifuge at 5,000xg for 5min.
2. Carefully open the tube and add 100ul of sterile water to dissolve the DNA.
3. Close the tube and incubate for 10 minutes at room temperature.
4. Briefly vortex the tube and then do a quick spin (less than 5000xg) to concentrate the liquid at the bottom.
5. Store the suspended plasmid at -20°C. The DNA is stable for at least one year from date of shipping when stored at -20°C.

RefSeq: [NM_001085375.2](#)

RefSeq Size: 4146 bp

RefSeq ORF: 819 bp

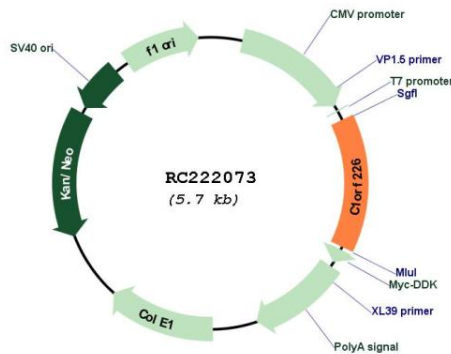
Locus ID: 400793

UniProt ID: [A1L170](#)

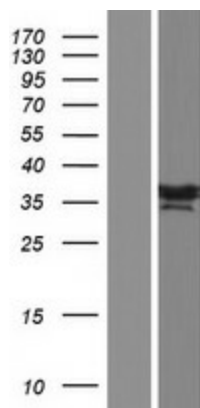
Cytogenetics: 1q23.3

MW: 28.9 kDa

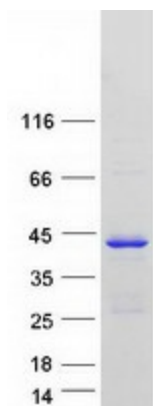
Product images:



Circular map for RC222073



Western blot validation of overexpression lysate (Cat# [LY421279]) using anti-DDK antibody (Cat# [TA50011-100]). Left: Cell lysates from untransfected HEK293T cells; Right: Cell lysates from HEK293T cells transfected with RC222073 using transfection reagent MegaTran 2.0 (Cat# [TT210002]).



Coomassie blue staining of purified C1orf226 protein (Cat# [TP322073]). The protein was produced from HEK293T cells transfected with C1orf226 cDNA clone (Cat# RC222073) using MegaTran 2.0 (Cat# [TT210002]).