

Product datasheet for **RC222067**

TAS2R60 (NM_177437) Human Tagged ORF Clone

Product data:

Product Type:	Expression Plasmids
Product Name:	TAS2R60 (NM_177437) Human Tagged ORF Clone
Tag:	Myc-DDK
Symbol:	TAS2R60
Synonyms:	T2R56; T2R60
Mammalian Cell Selection:	Neomycin
Vector:	pCMV6-Entry (PS100001)
E. coli Selection:	Kanamycin (25 ug/mL)
ORF Nucleotide Sequence:	>RC222067 representing NM_177437 Red=Cloning site Blue=ORF Green=Tags(s)

TTTTGTAATACGACTCACTATAGGGCGCCGGGAATTCGTCGACTGGATCCGGTACCGAGGAGATCTGCC
GCC**CGATCGCC**

ATGAATGGAGACCACATGGTTCTAGGATCTTCGGTGACTGACAAGAAGGCCATCATCTTGGTTACCATTT
TACTCCTTTTACGCCTGGTAGCAATAGCAGGCAATGGCTTCATCACTGCTGCTCTGGCGTGGAGTGGGT
GCTACGGAGAATGTTGTTGCCTTGTGATAAGTTATTGGTTAGCCTAGGGCCTCTCGTTCTGTCTGCAG
TCAGTGGTAATGGTAAGACCATTTATGTTTTCTGCATCCGATGGCCTCCCATAACAACCCTGTACTGC
AGTTTCTAGCTTCCAGTGGGACTTCTGAATGCTGCCACCTTATGGTCTCTACCTGGCTCAGTGTCTT
CTATTGTGTGAAAATTGCTACCTTCACCCACCCTGCTTCTTCTGGCTAAAGCACAAAGTTGTCTGGGTGG
CTACCATGGATGCTCTTCAGCTCTGTAGGGCTCTCCAGCTTCACCACCATTCTATTTTTCATAGGCAACC
ACAGAAATGTATCAGAACTATTTAAGGAACCATCTACAACCTTGAATGTCACCTGGCGATAGCATACGGAG
CTACTGTGAGAAATCTATCTCTCCCTCTAAAAATGATTACTTGGACAATGCCCACTGCTGCTTTTTTC
ATTTGCATGATTTTGTCTCATCACATCTCTGGGAAGACACAGGAAGAAGGCTCTCCTTACAACCTCAGGAT
TCCGAGAGCCAGTGTGCAGGCACACATAAAGGCTCTGCTGGCTCTCCTCTCTTTTGCCATGCTCTTCAT
CTCATATTTCTGTCACTGGTGTTCAGTGTGCAGGTATTTTCCACCTTGACTTTAAATTTCTGGGTG
TGGGAGTCAGTGATTTATCTGTGTGCAGCAGTTCACCCATCATCTGCTCTTCAGCAACTGCAGGCTGA
GAGCTGTGCTGAAGAGTCTCGTTCCCTCAAGGTGTGGACACCT

ACGCGTACGCGGCCGCTCGAGCAGAAACTCATCTCAGAAGAGGATCTGGCAGCAAATGATATCCTGGATT
ACAAGGATGACGACGATAAGGTTTAA



[View online »](#)

Protein Sequence: >RC222067 representing NM_177437
Red=Cloning site Green=Tags(s)

MNGDHMVLGSSVTDKKAIIIVTILLRLLVAIAGNGFITAALGVEVWLRRLPCDKLLVSLGASRFCLQ
 SVVMGKTIYVFLHPMAFPYNPVLQFLAFQWDFLNAATLWSSTWLSVFYCVKIATFTHPVFFWLKHKLSGW
 LPWMLFSSVGLSSFTTILFFIGNHRMYQNYLRNHLQPWNVTGDSIRSYCEKFYLFPLKMITWMTAVFF
 ICMILLITSLGRHRKKALLTTSGFREPSVQAHIKALLLSFAMLFISYFLSLVFSAAAGIFPPLDFKFWW
 WESVIYLCAAVHPILLFSNCRRLRAVLKSRSSRCGTP

TRTRPLEQKLISEEDLAANDILDYKDDDDKV

Chromatograms: https://cdn.origene.com/chromatograms/mk6559_b05.zip

Restriction Sites: SgfI-MluI

Cloning Scheme:



ACCN: NM_177437

ORF Size: 954 bp

OTI Disclaimer: The molecular sequence of this clone aligns with the gene accession number as a point of reference only. However, individual transcript sequences of the same gene can differ through naturally occurring variations (e.g. polymorphisms), each with its own valid existence. This clone is substantially in agreement with the reference, but a complete review of all prevailing variants is recommended prior to use. [More info](#)

OTI Annotation: This clone was engineered to express the complete ORF with an expression tag. Expression varies depending on the nature of the gene.

Components: The ORF clone is ion-exchange column purified and shipped in a 2D barcoded Matrix tube containing 10ug of transfection-ready, dried plasmid DNA (reconstitute with 100 ul of water).

Reconstitution Method:

1. Centrifuge at 5,000xg for 5min.
2. Carefully open the tube and add 100ul of sterile water to dissolve the DNA.
3. Close the tube and incubate for 10 minutes at room temperature.
4. Briefly vortex the tube and then do a quick spin (less than 5000xg) to concentrate the liquid at the bottom.
5. Store the suspended plasmid at -20°C. The DNA is stable for at least one year from date of shipping when stored at -20°C.

RefSeq: [NM_177437.1](#), [NP_803186.1](#)

RefSeq Size: 957 bp

RefSeq ORF: 957 bp

Locus ID: 338398

UniProt ID: [P59551](#)

Cytogenetics: 7q35

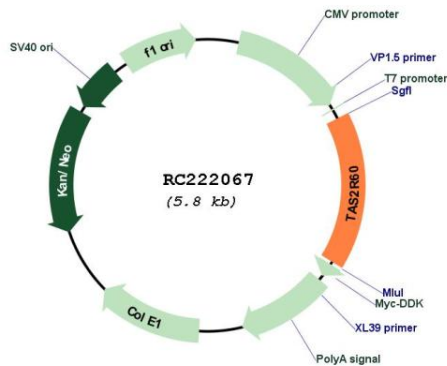
Protein Families: Druggable Genome, Transmembrane

Protein Pathways: Taste transduction

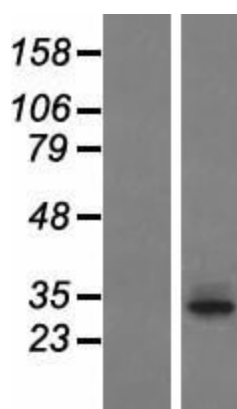
MW: 36.2 kDa

Gene Summary: This gene encodes a member of the bitter taste receptor family which belong to the G protein-coupled receptor superfamily and are predominantly expressed in taste receptor cells of the tongue and palate epithelia. This intronless taste receptor gene encodes a seven-transmembrane receptor protein, functioning as a bitter taste receptor. This gene is clustered together with eight other taste receptor genes on chromosome 7. [provided by RefSeq, Jul 2017]

Product images:



Circular map for RC222067



Western blot validation of overexpression lysate (Cat# [LY406164]) using anti-DDK antibody (Cat# [TA50011-100]). Left: Cell lysates from untransfected HEK293T cells; Right: Cell lysates from HEK293T cells transfected with RC222067 using transfection reagent MegaTran 2.0 (Cat# [TT210002]).