

Product datasheet for RC222063L1

CUX2 (NM_015267) Human Tagged Lenti ORF Clone

Product data:

Product Type:	Expression Plasmids
Product Name:	CUX2 (NM_015267) Human Tagged Lenti ORF Clone
Tag:	Myc-DDK
Symbol:	CUX2
Synonyms:	CDP2; CUTL2; DEE67; EIEE67
Mammalian Cell Selection:	None
Vector:	pLenti-C-Myc-DDK (PS100064)
E. coli Selection:	Chloramphenicol (34 ug/mL)
ORF Nucleotide Sequence:	The ORF insert of this clone is exactly the same as(RC222063).
Restriction Sites:	SgfI-MluI
Cloning Scheme:	

Cloning sites used for ORF Shuttling:



* The last codon before the Stop codon of the ORF.

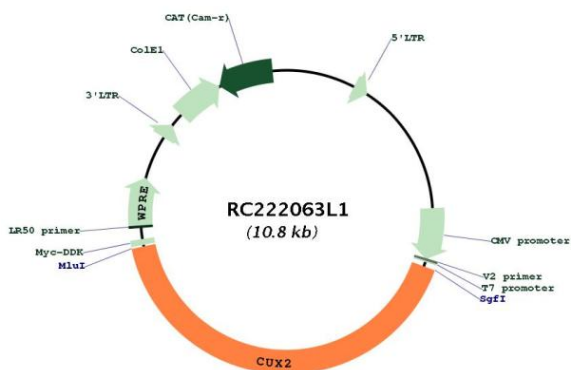
ACCN:	NM_015267
ORF Size:	4458 bp



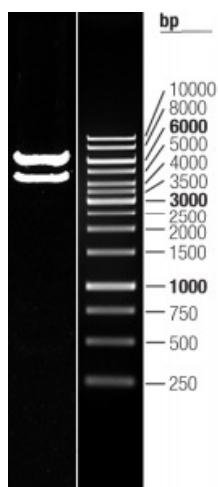
[View online >](#)

OTI Disclaimer:	The molecular sequence of this clone aligns with the gene accession number as a point of reference only. However, individual transcript sequences of the same gene can differ through naturally occurring variations (e.g. polymorphisms), each with its own valid existence. This clone is substantially in agreement with the reference, but a complete review of all prevailing variants is recommended prior to use. More info
OTI Annotation:	This clone was engineered to express the complete ORF with an expression tag. Expression varies depending on the nature of the gene.
Components:	The ORF clone is ion-exchange column purified and shipped in a 2D barcoded Matrix tube containing 10ug of transfection-ready, dried plasmid DNA (reconstitute with 100 ul of water).
Reconstitution Method:	<ol style="list-style-type: none">1. Centrifuge at 5,000xg for 5min.2. Carefully open the tube and add 100ul of sterile water to dissolve the DNA.3. Close the tube and incubate for 10 minutes at room temperature.4. Briefly vortex the tube and then do a quick spin (less than 5000xg) to concentrate the liquid at the bottom.5. Store the suspended plasmid at -20°C. The DNA is stable for at least one year from date of shipping when stored at -20°C.
RefSeq:	NM_015267.1
RefSeq Size:	6841 bp
RefSeq ORF:	4461 bp
Locus ID:	23316
UniProt ID:	O14529
Cytogenetics:	12q24.11-q24.12
MW:	161.5 kDa
Gene Summary:	This gene encodes a protein which contains three CUT domains and a homeodomain; both domains are DNA-binding motifs. A similar gene, whose gene product possesses different DNA-binding activities, is located on chromosome on chromosome 7. Two pseudogenes of this gene have been identified on chromosomes 10 and 4. [provided by RefSeq, Jan 2013]

Product images:



Circular map for RC222063L1



Double digestion of RC222063L1 using SgfI and MluI