

Product datasheet for **RC222058**

SLC34A3 (NM_080877) Human Tagged ORF Clone

Product data:

Product Type:	Expression Plasmids
Product Name:	SLC34A3 (NM_080877) Human Tagged ORF Clone
Tag:	Myc-DDK
Symbol:	SLC34A3
Synonyms:	HHRH; NPTIic
Mammalian Cell Selection:	Neomycin
Vector:	pCMV6-Entry (PS100001)
E. coli Selection:	Kanamycin (25 ug/mL)



[View online »](#)

ORF Nucleotide Sequence:

>RC222058 representing NM_080877
 Red=Cloning site Blue=ORF Green=Tags(s)

TTTTGTAATACGACTCACTATAGGGCGGCCGGAATTCGTCGACTGGATCCGGTACCGAGGAGATCTGCC
 GCC**CGCATCGCC**

ATGCCGAGTTCCTTCCCGGCAGCCAGGTCCCCACCCACTCTGGACGCGGTTGACCTAGTGAAAAGA
 CTCTGAGGAATGAAGGGACCTCCAGTCTGCTCCAGTCTTGAGGAAGGGGACACAGACCCTGGACCCT
 CCCTCAGCTGAAGGACACAAGCCAGCCCTGAAAAGAGCTCCGCGTGGCCGGCAGGCTGCGCCGCTGGCC
 GGCAGCGTCTCAAGGCCTGCGGGCTCCTCGGCAGCCTGTACTTCTTCATCTGCTCTCTGGACGCTCTCA
 GCTCCGCCTTCCAGTCTGGGAGCAAAGTGGCCGGAGACATCTCAAGGACAACGTGGTGTGTCCAA
 CCCTGTGGCTGGACTGGTATTGGCGTGTGGTACAGCCCTGGTGCAGAGTTCAGCACGTCTCTCTCC
 ATCGTGGTCAAGTGGTGTGTAAGTGTGCTGACTGTCCGGGTGTCTGTGCCATCATCATGGGTGTCA
 ACGTAGGCACATCCATCACCAGCACCTGGTCTCAATGGCGCAGTCAGGGGACCGGGATGAATTTAGAG
 GGCTTTCAGCGGCTCGGCGGTGCACGGGATCTCAACTGGCTCACAGTGTGGTCTGCTGCCACTGGAG
 AGCGCCACGGCCCTGCTGGAGAGGCTAAGTGAGCTAGCCCTGGGTGCCGCCAGCCTGACACCCAGGGCGC
 AGGCGCCCGACATCCTCAAGGTGCTGACGAAGCCGCTCACACACCTCATCGTGCAGCTGGACTCCGACAT
 GATCATGAGCAGTGCCACAGGCAACGCCACTAACAGCAGTCTCATTAAAGCACTGGTGCAGCACCGGGG
 CAGCCGACCCAGGAGAACAGCAGCTGTGGCGCCTTCGGCCCGTGCACAGAGAAGAACAGCACAGCCCGG
 CGGACAGGCTGCCCTGCCCCACCTGTTTGGGGCACGGAGCTCACGGACCTGGCCGTGGGCTGCATCCT
 GCTGGCCGGTCCCTGCTGGTGTCTGCGGCTGCCTGGTCTCATAGTCAAGTGTCTCAACTCTGTGCTG
 CGCGCCCGCTGGCCAGGTCGTGAGGACAGTCAATGCGGACTTCCCCTTCCCGTGGGCTGGCTCG
 GCGGCTACCTGGCCGCTCCTCGCGGGCCCGGCTGACCTTCGCACTGCAGAGCAGCAGCTTCCACGGC
 GGCCGTGCTGCCCTCATGGGGTGTGGGGTGTAGTCTGAGCCGGGCGTACCCCTCTTACTGGGCTCC
 AACATCGGACCACTACCACAGCCCTGCTGGTGCCTGGCCAGCCCGCAGACAGGATGCTCAGCGCC
 TGCAGGTGCCTCATCCACTTCTTCTCAACCTGGCCGGCATCCTGCTGTGGTACCTGGTGCCTGCACT
 GCGGCTGCCCATCCCGTGGCCAGGCACTTCGGGGTGGTACCGCCCGTACCCTGGGTGGTGGGCTC
 TACCTGCTGCTCGGATCCTGCTGCTGCCCTGGCGCCTTCGGGCTCTCCCTGGCAGGGGGCATGGTGC
 TGGCCGCTGTGGGGTCCCCTGGTGGGCTGGTGTCTCCTCGTACCTGGTACTGTCTGCAGCGGGC
 CCGGCCGCTGGTGCCTGTCCGCTGCGCTCCTGGGCTGGTCCCGTCTGGCTCCATTCTCTGGAG
 CCCTGGGACCGCTGGTACCCGCTGCTGCCCTGCAACGTCTGCAGCCCCCGAAGGCCACCACCAAG
 AGGCTACTGCTACGAGAACCCTGAGATCTTGGCCTCCAGCAGTTG

ACGCGTACGCGGCGGCTCGAGCAGAAACTCATCTCAGAAGAGGATCTGGCAGCAAATGATATCCTGGATT
 ACAAGGATGACGACGATAAGGTTTAA

Protein Sequence:

>RC222058 representing NM_080877
 Red=Cloning site Green=Tags(s)

MPSSLPGSQVPHPTLDAVDLVEKTLRNEGTSSSAPVLEEGDTPWTLPLQKDTSPWKELRVAGRLRVA
 GSVLKACGLLGSLYFFICSLDVLSSAFQLLGSKVAGDIFKDNVLSNPVAGLVIGLVLTALVQSSSTSS
 IVVSMVAAKLLTVRVSPVIMGVNVTSTLVSMAQSGDRDEFQRAFSGSAVHGFNWLTVLVLLPLE
 SATALLERLSELALGAASLTPRAQAPDILKVLTKPLTHLIVQLSDMIMSSATGNATNSSLIKHWCGTTG
 QPTQENSSCGAFGPCTEKNSTAPADRLPCRHLFAGTELTDLAVGCILLAGSLLVLCGLVLIVKLLNSVL
 RGRVAQVVRTVINADFPFPLGWLGGYLAVLAGAGLTFALQSSSVFTAADVPLMGVGVISLDRAYPLLLGS
 NIGTTTTALLAALASPADRMLSALQVALIHFFNLAGILLWYLPALRLPIPLARHFGVVTARYRWWAGV
 YLLLGFLLLPLAAFGLSLAGGMVLAAVGGPLVGLVLLVILVTVLQRRRPAPLVPRLRSWAWLPVWLHSL
 PWDRLVTRCCPCNVCSPPKATTKEAYCYENPEILASQQL

TRTRPLEQKLISEEDLAANDILDYKDDDDKV

Chromatograms:

https://cdn.origene.com/chromatograms/mk8039_d08.zip

Restriction Sites: SgfI-MluI

Cloning Scheme:



ACCN: NM_080877

ORF Size: 1797 bp

OTI Disclaimer: The molecular sequence of this clone aligns with the gene accession number as a point of reference only. However, individual transcript sequences of the same gene can differ through naturally occurring variations (e.g. polymorphisms), each with its own valid existence. This clone is substantially in agreement with the reference, but a complete review of all prevailing variants is recommended prior to use. [More info](#)

OTI Annotation: This clone was engineered to express the complete ORF with an expression tag. Expression varies depending on the nature of the gene.

Components: The ORF clone is ion-exchange column purified and shipped in a 2D barcoded Matrix tube containing 10ug of transfection-ready, dried plasmid DNA (reconstitute with 100 ul of water).

- Reconstitution Method:
1. Centrifuge at 5,000xg for 5min.
 2. Carefully open the tube and add 100ul of sterile water to dissolve the DNA.
 3. Close the tube and incubate for 10 minutes at room temperature.
 4. Briefly vortex the tube and then do a quick spin (less than 5000xg) to concentrate the liquid at the bottom.
 5. Store the suspended plasmid at -20°C. The DNA is stable for at least one year from date of shipping when stored at -20°C.

RefSeq: [NM_080877.1](#), [NP_543153.1](#)

RefSeq Size: 2124 bp

RefSeq ORF: 1800 bp

Locus ID: 142680

UniProt ID: [Q8N130](#)

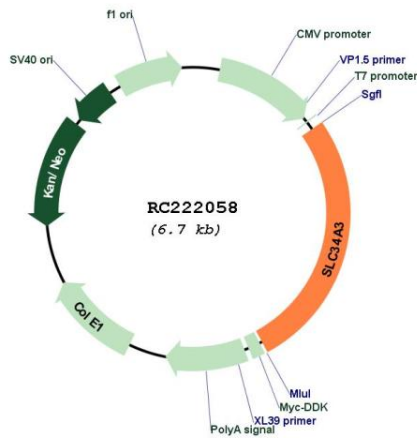
Cytogenetics: 9q34.3

Protein Families: Transmembrane

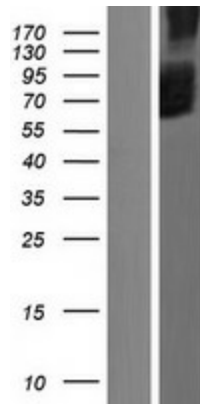
MW: 63.3 kDa

Gene Summary: This gene encodes a member of SLC34A transporter family of proteins, and is expressed primarily in the kidney. It is involved in transporting phosphate into cells via sodium cotransport in the renal brush border membrane, and contributes to the maintenance of inorganic phosphate concentration in the kidney. Mutations in this gene are associated with hereditary hypophosphatemic rickets with hypercalciuria. Alternatively spliced transcript variants varying in the 5' UTR have been found for this gene.[provided by RefSeq, Apr 2010]

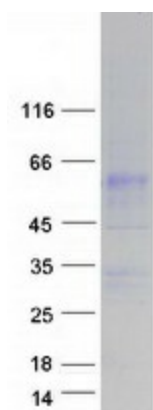
Product images:



Circular map for RC222058



Western blot validation of overexpression lysate (Cat# [LY408994]) using anti-DDK antibody (Cat# [TA50011-100]). Left: Cell lysates from untransfected HEK293T cells; Right: Cell lysates from HEK293T cells transfected with RC222058 using transfection reagent MegaTran 2.0 (Cat# [TT210002]).



Coomassie blue staining of purified SLC34A3 protein (Cat# [TP322058]). The protein was produced from HEK293T cells transfected with SLC34A3 cDNA clone (Cat# RC222058) using MegaTran 2.0 (Cat# [TT210002]).