

## Product datasheet for **RC222056**

### **PIB5PA (INPP5J) (NM\_001002837) Human Tagged ORF Clone**

#### **Product data:**

Product Type:	Expression Plasmids
Product Name:	PIB5PA (INPP5J) (NM_001002837) Human Tagged ORF Clone
Tag:	Myc-DDK
Symbol:	PIB5PA
Synonyms:	INPP5; PIB5PA; PIPP
Mammalian Cell Selection:	Neomycin
Vector:	pCMV6-Entry (PS100001)
E. coli Selection:	Kanamycin (25 ug/mL)



[View online »](#)

ORF Nucleotide  
Sequence:

>RC222056 representing NM\_001002837  
Red=Cloning site Blue=ORF Green=Tags(s)

TTTTGTAATACGACTCACTATAGGGCGGCCGGAATTCGTCGACTGGATCCGGTACCGAGGAGATCTGCC  
GCC**CGGATCGCC**

ATGGAGGGCCAGAGCAGCAGGGGCAGCAGGAGCCAGGGACCCGGGCTGGCCTGGGTTCCCTGCCATGC  
CCCAGGGTGTGCCAAACTGGGGCACCTCCAAGGTGGACTCAAGTTTTCAGCTCCCAGCAAAGAAGAA  
CGCAGCCCTAGGACCCTCGGAACCAAGGATCACTGTGGTACATGGAACGTGGGCACTGCCATGCCCCCA  
GACGATGTACATCCCTCCTCCACTGGGCGGTGGTGACGACAGCGACGGCGCAGACATGATCGCCATAG  
GGTTGCAGGAAGTGAATCCATGCTCAACAAGCGACTCAAGGACGCCCTTTCACGGACCAGTGGAGTGA  
GCTGTTTATGGATGCGCTAGGGCCCTTCAACTTCGTGCTGGTGGTTCGGTGAGGATGCAGGGTGTGATC  
CTGCTGCTGTTCCCAAGTACTACCACCTGCCCTTCTGCGAGACGTGCAGACCGACTGCACGGCAGCTG  
GCCTGGGCGGCTACTGGGTAACAAGGGTGGCGTGAGCGTGCCTGGCGGCTTCGGGCACATGCTCTG  
CTTCTGAACTGCCACTGCCTGCGCATATGGACAAGGCGGAGCAGCGCAAAGACAACCTCCAGACCATC  
CTCAGCCTCCAGCAGTTCGAAGGCCGGGCGCACAGGGCATCCTGGATCATGACCTCGTGTTCGGTTCG  
GGACCTGAACCTCCGCATTGAGAGCTATGACCTGCACCTTGTCAAGTTTGCATCGACAGTGACCAGCT  
CCATCAGCTCTGGGAGAAGGACCAGCTCAACATGGCCAAGAACACCTGGCCCATCTGAAGGGCTTTCAG  
GAGGGGCCCTCAACTTCGCTCCACCTCAAGTTTGTGTGGTACCAACAAATACGATACCAGTGCCA  
AGAAACGGAAGCCAGCTTGGACAGACCGTATCCTATGGAAGTCAAGGCTCCAGTGGGGGTCCCAGCCC  
CTCAGGACGGAAGAGCCACCGACTCCAGGTGACGACGACAGCTACCGCAGCCACATGGAATACACAGTC  
AGCGACCACAAGCCTGTGGCTGCCAGTTCCTCCTGCAGTTTGCCTTCAGGGACGACATGCCACTGGTGC  
GGCTGGAGGTGGCAGATGAGTGGGTGGCGCCGAGCAGGCGGTGGTGGTACCGCATGGAACAGTGTTC  
CGCCCGCAGCTCCTGGGACTGGATCGGCTTATACCGGGTGGGTTCCGCCATTGCAAGGACTATGTGGCT  
TATGTCCGGGCCAAACATGAAGATGTGGATGGGAATACATACCAGGTAACATTAGTGAGGAATCACTGC  
CCAAGGGCCATGGAGACTTATCCTGGGCTACTATAGTACAACCACAGCATCCTCATCGGCATCACTGA  
ACCCTTCAGATCTCGCTGCCTTCTCGGAGTTGGCCAGCAGCAGCACAGACAGCTCAGGCACCAGCTCA  
GAGGGAGAGGATGACAGCACACTGGAGCTCCTTGACCCAAGTCCCGCAGCCCCAGTCTGGCAAGTCCA  
AGCGACACCGCAGCCGACGCCGGGACTGGCCAGGTTCCCTGGGCTTGCCTACGGCCCTCATCCCGTGA  
ACGCCGTGGTCCAGCCGTAGCCCTCACCCAGAGCCGCGCCTGTCCCGAGTGGCTCCTGACAGGAGC  
AGTAATGGCAGCAGCCGGGCGAGTGTGAAGAGGGGCCCTCTGGGTTGCCTGGCCCTGGGCCTTCCCAC  
CAGCTGTGCCTCGAAGCCTGGGCTGTTGCCCGCCTTGCCTTAGAGACTGTAGACCCTGGTGGTGGTGG  
CTCCTGGGGACCTGATCGGGAGGCCCTGGCGCCAACAGCCTGTCTCCTAGTCCCAGGGCCATCGGGGG  
CTGGAGGAAGGGGCTGGGGCC

**ACGCGT**ACGCGGCCGCTCGAGCAGAACTCATCTCAGAAGAGGATCTGGCAGCAAATGATATCCTGGATT  
ACAAGGATGACGACGATAAGGTTTAA

**Protein Sequence:** >RC222056 representing NM\_001002837  
Red=Cloning site Green=Tags(s)

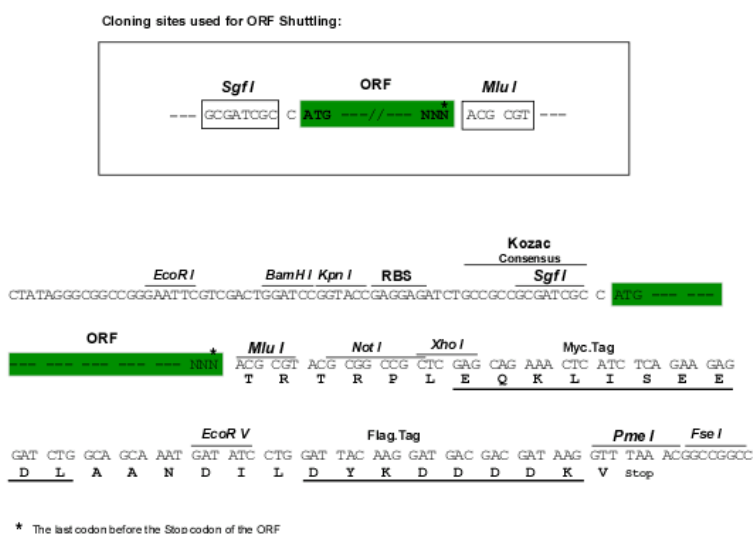
```
MEGQSSRGRSRPGTRAGLGSLPMPQGVAVTGAPSKVDSSFQLPAKKNAALGPSEPRITVVTVNVTAMP
DDVTSLLHLGGDDSDGADMIAGLQEVNSMLNKRLKDALFTDQWSELFMDALGPFNFVLVSSVRMQGVI
LLLFAKYHYLPFLRDVQTDCTRTGLGGYWGNGGGVSVRLAAFGHMLCFLNCHLPAHMDKAEQRKDNFQTI
LSLQQFQGPGAQGILDHDLVFWFGDLNFRIESYDLHFVKFAIDSDQLHQLWEKDQLNMAKNTWPILKGFQ
EGLNFAPTFFKFDVGTNKYDTSAKKRKPAWTDRIWLVKVKAPGGGPPSGRKSRLQVTVQHSYRSHMEYTV
SDHKPVAAQFLLQFAFRDDMPLVRLEVADEWVRPEQAVVRYRMETVFARSSWDWI GLYRVGFRHCKDYVA
YVRAKHEDVDGNTYQVTFSEESLPKGHGDFILGYSHNHSILIGITEPFQISLPSELASSTSDSSGTS
EGEDDSTLELLAPKSRSPSPGSKRHRSRPGLARFPGLALRPSRERRGASRSPSPQSRRLSRVAPDRS
SNGSSRGSSEEGPSGLPGPWAFPVAVPRSLGLLPALRLETVDPPGGGSGWGPDREALAPNSLSPSPQGHGR
LEEGGLGP
```

TRTRPLEQKLISEEDLAANDILDYKDDDDKV

**Chromatograms:** [https://cdn.origene.com/chromatograms/mg4266\\_h01.zip](https://cdn.origene.com/chromatograms/mg4266_h01.zip)

**Restriction Sites:** SgfI-MluI

**Cloning Scheme:**



**ACCN:** NM\_001002837

**ORF Size:** 1914 bp

**OTI Disclaimer:** The molecular sequence of this clone aligns with the gene accession number as a point of reference only. However, individual transcript sequences of the same gene can differ through naturally occurring variations (e.g. polymorphisms), each with its own valid existence. This clone is substantially in agreement with the reference, but a complete review of all prevailing variants is recommended prior to use. [More info](#)

**OTI Annotation:** This clone was engineered to express the complete ORF with an expression tag. Expression varies depending on the nature of the gene.

**Components:** The ORF clone is ion-exchange column purified and shipped in a 2D barcoded Matrix tube containing 10ug of transfection-ready, dried plasmid DNA (reconstitute with 100 ul of water).

**Reconstitution Method:**

1. Centrifuge at 5,000xg for 5min.
2. Carefully open the tube and add 100ul of sterile water to dissolve the DNA.
3. Close the tube and incubate for 10 minutes at room temperature.
4. Briefly vortex the tube and then do a quick spin (less than 5000xg) to concentrate the liquid at the bottom.
5. Store the suspended plasmid at -20°C. The DNA is stable for at least one year from date of shipping when stored at -20°C.

**RefSeq:** [NM\\_001002837.2](#), [NP\\_001002837.1](#)

**RefSeq Size:** 2238 bp

**RefSeq ORF:** 1917 bp

**Locus ID:** 27124

**UniProt ID:** [Q15735](#)

**Cytogenetics:** 22q12.2

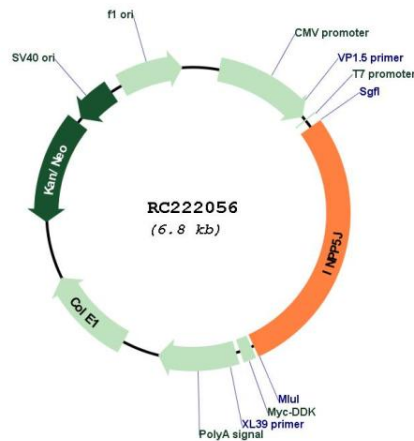
**Protein Families:** Druggable Genome

**Protein Pathways:** Inositol phosphate metabolism, Metabolic pathways, Phosphatidylinositol signaling system

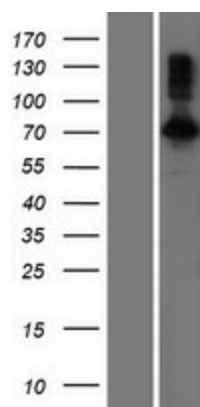
**MW:** 70.1 kDa

**Gene Summary:** Inositol 5-phosphatase, which converts inositol 1,4,5-trisphosphate to inositol 1,4-bisphosphate. Also converts phosphatidylinositol 4,5-bisphosphate to phosphatidylinositol 4-phosphate and inositol 1,3,4,5-tetrakisphosphate to inositol 1,3,4-trisphosphate in vitro. May be involved in modulation of the function of inositol and phosphatidylinositol polyphosphate-binding proteins that are present at membranes ruffles (By similarity).[UniProtKB/Swiss-Prot Function]

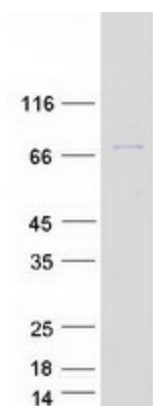
**Product images:**



Circular map for RC222056



Western blot validation of overexpression lysate (Cat# [LY424163]) using anti-DDK antibody (Cat# [TA50011-100]). Left: Cell lysates from untransfected HEK293T cells; Right: Cell lysates from HEK293T cells transfected with RC222056 using transfection reagent MegaTran 2.0 (Cat# [TT210002]).



Coomassie blue staining of purified INPP5 protein (Cat# [TP322056]). The protein was produced from HEK293T cells transfected with INPP5 cDNA clone (Cat# RC222056) using MegaTran 2.0 (Cat# [TT210002]).