

Product datasheet for **RC222052**

SOX14 (NM_004189) Human Tagged ORF Clone

Product data:

Product Type:	Expression Plasmids
Product Name:	SOX14 (NM_004189) Human Tagged ORF Clone
Tag:	Myc-DDK
Symbol:	SOX14
Synonyms:	SOX28
Mammalian Cell Selection:	Neomycin
Vector:	pCMV6-Entry (PS100001)
E. coli Selection:	Kanamycin (25 ug/mL)
ORF Nucleotide Sequence:	>RC222052 ORF sequence Red=Cloning site Blue=ORF Green=Tags(s)

TTTTGTAATACGACTCACTATAGGGCGGCCGGAATTCGTCGACTGGATCCGGTACCGAGGAGATCTGCC
GCC**CGATCGCC**

ATGTCCAAACCTTCAGACCACATCAAGCGGCCCATGAACGCCTTCATGGTATGGTCCCGGGGCCAGCGGC
GCAAGATGGCCCAGGAAAACCCAAGATGCACAACCTCGGAGATCAGCAAACGCCTAGGTGCCGAATGGAA
GCTTCTGTCCGAGGCAGAGAAGCGGCCATACATCGATGAAGCCAAGCGGCTACGCGCCAGCACATGAAG
GAGCACCTGACTACAAGTACCGACCTCGGCGCAAGCCAAGAACCTGCTCAAGAAGGACAGGTATGTCT
TCCCCTTGCCCTACCTGGGCGACACGGACCCGCTCAAGGCGGCTGGCCTGCCCGTGGGGCCTCCGACGG
CCTCCTGAGCGCGCCCGAGAAAGCCCGGCCTTCTTGCCCGCGGCTCGGCGCCCTACTCCTGTGGAC
CCCGCGCAGTTTAGCTCGAGCGCCATCCAGAAGATGGGCGAAGTGCCCCACACCTTGCTACCGGCGCTC
TGCCCTACGCGTCCACCCTGGGCTACCAGAACGGCGCCTTCGGCAGCCTCAGCTGCCCCAGCCAGCACAC
GCACACGCACCCGTCCCCACCAACCCTGGCTACGTGGTGCCTGTAAGTGTACCGCCTGGTCTGCCTCC
ACCCTGCAGCCCCCGTCCGCTACATCCTTCCAGGCATGACCAAGACTGGCATAGACCCTTATTCGT
CAGCCCACGCTACGGCCATG

AGCGGACCGACGCGTACGCGGCCGCTCGAGCAGAAACTCATCTCAGAAGAGGATCTGGCAGCAAATGATATCC
TGGATTACAAGGATGACGACGATAAGGTTTAA



[View online »](#)

Protein Sequence: >RC222052 protein sequence
Red=Cloning site Green=Tags(s)

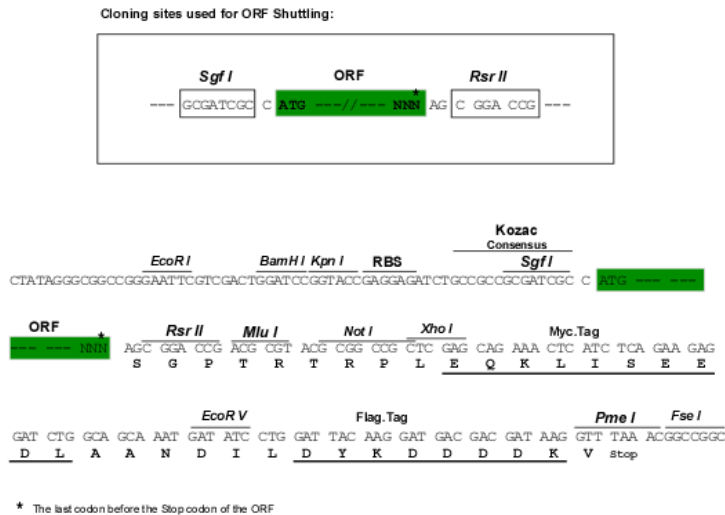
MSKPSDHIKRP MNAFMVWSRGRKMAQENPKMHNSEISKRLGAEWKLLSEAEKRPYIDEAKRLRAQHMK
 EHPDYKYRPRRKPKNLLKKDRYVFPLPYLGDTDPLKAAGLPVGASDGLLSAPEKARAFLLPPASAPYSLLD
 PAQFSSSAIQMGEVPHLTLATGALPYASTLGYQNGAFGSLSCPSQHTHTHPSPNPGYVVPNCNTAWSAS
 TLQPPVAYILFPGMTKTGIDPYSSAHATAM

SGPTRTRPLEQKLISEEDLAANDILDYKDDDDKV

Chromatograms: https://cdn.origene.com/chromatograms/mk6616_e06.zip

Restriction Sites: SgfI-RsrII

Cloning Scheme:



ACCN: NM_004189

ORF Size: 720 bp

OTI Disclaimer: The molecular sequence of this clone aligns with the gene accession number as a point of reference only. However, individual transcript sequences of the same gene can differ through naturally occurring variations (e.g. polymorphisms), each with its own valid existence. This clone is substantially in agreement with the reference, but a complete review of all prevailing variants is recommended prior to use. [More info](#)

OTI Annotation: This clone was engineered to express the complete ORF with an expression tag. Expression varies depending on the nature of the gene.

Components: The ORF clone is ion-exchange column purified and shipped in a 2D barcoded Matrix tube containing 10ug of transfection-ready, dried plasmid DNA (reconstitute with 100 ul of water).

Reconstitution Method:

1. Centrifuge at 5,000xg for 5min.
2. Carefully open the tube and add 100ul of sterile water to dissolve the DNA.
3. Close the tube and incubate for 10 minutes at room temperature.
4. Briefly vortex the tube and then do a quick spin (less than 5000xg) to concentrate the liquid at the bottom.
5. Store the suspended plasmid at -20°C. The DNA is stable for at least one year from date of shipping when stored at -20°C.

RefSeq: [NM_004189.4](#)

RefSeq Size: 2043 bp

RefSeq ORF: 723 bp

Locus ID: 8403

UniProt ID: [O95416](#)

Cytogenetics: 3q22.3

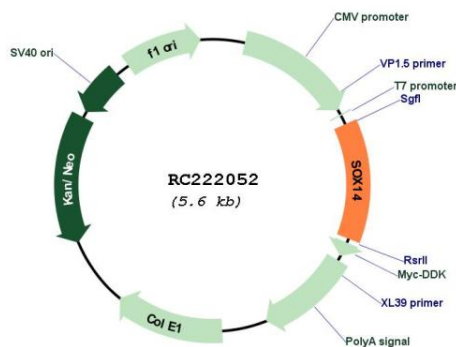
Domains: HMG

Protein Families: Transcription Factors

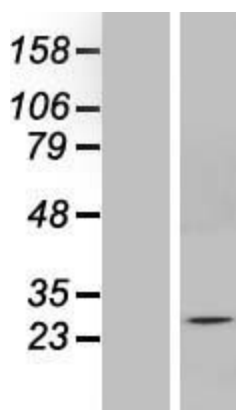
MW: 26.5 kDa

Gene Summary: This intronless gene encodes a member of the SOX (SRY-related HMG-box) family of transcription factors involved in the regulation of embryonic development and in the determination of the cell fate. The encoded protein may act as a transcriptional regulator after forming a protein complex with other proteins. Mutations in this gene are suggested to be responsible for the limb defects associated with blepharophimosis, ptosis, epicanthus inversus syndrome (BPES) and Mobius syndrome. [provided by RefSeq, Jul 2008]

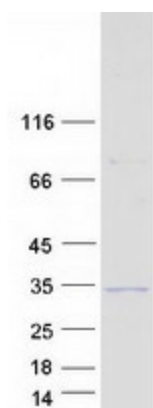
Product images:



Circular map for RC222052



Western blot validation of overexpression lysate (Cat# [LY418159]) using anti-DDK antibody (Cat# [TA50011-100]). Left: Cell lysates from untransfected HEK293T cells; Right: Cell lysates from HEK293T cells transfected with RC222052 using transfection reagent MegaTran 2.0 (Cat# [TT210002]).



Coomassie blue staining of purified SOX14 protein (Cat# [TP322052]). The protein was produced from HEK293T cells transfected with SOX14 cDNA clone (Cat# RC222052) using MegaTran 2.0 (Cat# [TT210002]).