

Product datasheet for RC222049

ADAMTS13 (NM_139026) Human Tagged ORF Clone

Product data:

| | |
|--------------------------|---|
| Product Type: | Expression Plasmids |
| Product Name: | ADAMTS13 (NM_139026) Human Tagged ORF Clone |
| Tag: | Myc-DDK |
| Symbol: | ADAMTS13 |
| Synonyms: | ADAM-TS13; ADAMTS-13; C9orf8; vWF-CP; VWFCP |
| Vector: | pCMV6-Entry (PS100001) |
| E. coli Selection: | Kanamycin (25 ug/mL) |
| Cell Selection: | Neomycin |
| ORF Nucleotide Sequence: | >RC222049 representing NM_139026 Red=Cloning site Blue=ORF Green=Tags(s) |

TTTTGTAATACGACTCACTATAGGGCGCCGGGAATTCGTCGACTGGATCCGGTACCGAGGAGATCTGCC
GCC**GCGATCGCC**

ATGCACCAGCGTCACCCCGGGCAAGATGCCCTCCCCTCTGTGTGGCCGGAATCCTTGCCTGTGGCTTTC
TCCTGGGCTGCTGGGACCTCCCATTTCCAGCAGAGTTGTCTTTCAGGCTTTGGAGCCACAGGCCGTGTC
TTCTTACTTGAGCCCTGGTGTCTCCCTAAAAGGCCGCCCTCCTTCCCCTGGCTTCCAGAGCCAGAGGCAG
AGGCAGAGGGCGGCTGCAGGCGGCATCCTACACCTGGAGCTGCTGGTGGCCGTGGGCCCGATGTCTTCC
AGGCTCACAGGAGGACACAGAGCGCTATGTGCTCACCAACCTCAACATCGGGGAGAACTGCTTCGGGA
CCCGTCCCCTGGGGCTCAGTTTCGGGTGCACCTGGTGAAGATGGTCATTCTGACAGAGCCTGAGGGTGCC
CCAAATATCACAGCCAACCTCACCTCGTCCCTGCTGAGCGTCTGTGGGTGGAGCCAGACCATCAACCCTG
AGGACGACACGGATCCTGGCCATGCTGACCTGGTCCCTATATCACTAGGTTTGACCTGGAGTTGCCTGA
TGGTAACCGGCAGGTGCGGGGCGTCACCCAGCTGGGCGGTGCCTGCTCCCAACCTGGAGCTGCCTCATT
ACCGAGGACACTGGCTTCGACCTGGGAGTCAACATTGCCATGAGATTGGGCACAGCTTCGGCCTGGAGC
ACGACGGCGCGCCCGGCAGCGGCTGCGGCCAGCGGACACGTGATGGCTTCGGACGGCGCCGCCCGCCG
CGCCGGCCTCGCTGGTCCCCCTGCAGCCCGCGCAGCTGCTGAGCCTGCTCAGCCCAACGAGCAGTGC
CGCGTGGCCTTCGGCCCCAAGGCTGTGCGCTGCACCTTCGCCAGGAGACCTGGATATGTGCCAGGCC
TCTCCTGCCACACAGACCCGCTGGACCAAAGCAGCTGCAGCCGCCTCCTCGTTCTCCTGGATGGGAC
AGAATGTGGCGTGGAGAAGTGGTCTCAAGGGTCTGCTGCGGCTCCCTGGTGGAGCTGACCCCATAGCA
GCAGTGCATGGGCGTGGTCTAGCTGGGGTCCCCGAAGTCTTGTCCCCTCCTGCGGAGGAGGTGTGG
TCACCAGGAGGCGCAGTGCAACAACCCAGACCTGCCTTTGGGGGCGTGCATGTGTTGGTGTGACCT
CCAGGCCGAGATGTCAACTCAGGCTGCGAGAAGACCCAGCTGGAGTTCATGTGCAACAGTGCGCC
AGGACCGACGGCCAGCCGCTGCGCTCCTCCCCTGGCGGCGCTCCTTCTACCACTGGGGTGTGCTGTAC
CACACAGCCAAGGGGATGCTCTGTGCAGACACATGTGCCGGCCATTGGCGAGAGCTTCATCATGAAGCG
TGAGACAGCTTCTCGATGGGACCCGGTGTATGCCAAGTGGCCCCGGGAGGACGGGACCTGAGCCTG
TGTGTGTCGGGACGCTGCAGGACATTTGGCTGTGATGGTGGACTCCCAGCAGGTATGGGACAGGT



[View online »](#)

GCCAGGTGTGGTGGGACAACAGCACGTGCAGCCACGGAAGGGCTCTTTCACAGCTGGCAGAGCGAG
AGAATATGTACATTTCTGACAGTTACCCCAACCTGACCAAGTGTCTACATTGCCAACACAGGCCTCTC
TTCACACACTTGGCGGTGAGGATCGGAGGGCGCTATGTCGTGGCTGGGAAGATGAGCATCTCCCCTAAC
CCACCTACCCCTCCCTCTGGAGGATGGTCGTGTGAGTACAGAGTGGCCCTCACCGAGGACCGGTGCC
CCGCTGGAGGAGATCCGCATCTGGGACCCCTCCAGGAAGATGCTGACATCCAGTTTACAGGCGGTAT
GGCGAGGAGTATGGCAACCTCACCCGCCAGACATCACCTTACCTACTCCAGCCTAAGCCACGGCAGG
CCTGGGTGTGGCCGCTGTGCTGGGCCCTGCTCGGTGAGCTGTGGGCGAGGGCTGCGCTGGGTAACCTA
CAGCTGCCTGGACCAGGCCAGGAAGGAGTTGGTGGAGACTGTCCAGTGCCAAGGGAGCCAGCAGCCACA
GCGTGGCCAGAGGCTGCGTGTGCAACCTGCCCTCCCTACTGGGCGGTGGGAGACTTCGGCCCATGCA
GCGCTCTGTGGGGGCGGCTGCGGGAGCGGCCAGTGCCTGCGTGGAGGCCAGGGCAGCCTCTGAA
GACATTGCCCCAGCCGGTGCAGAGCAGGGGCCAGCAGCCAGCTGTGGCGTGGAAACCTGCAACCCC
CAGCCCTGCCCTGCCAGGTGGGAGGTGTGAGAGCCAGCTCATGCACATCAGCTGGTGGAGCAGGCCTGG
CCTTGGAGAACGAGACCTGTGTGCCAGGGCAGATGGCCTGGAGGCTCCAGTGACTGAGGGGCTGGCTC
CGTAGATGAGAAGCTGCCTGCCCTGAGCCCTGTGTGGGATGTCATGTCCTCCAGGCTGGGGCCATCTG
GATGCCACCTCTGCAGGGGAGAAGGCTCCCTCCCCTATGGGCGAGCATCAGGACGGGGCTCAAGCTGCAC
ACGTGTGGACCCCTGCGGCAGGGTGTGCTCCCTCCTGCGGGCGAGGTCTGATGGAGCTGCGTTTCT
GTGCATGGACTCTGCCCTCAGGGTGCCTGTCCAGGAAGAGCTGTGTGGCCTGGCAAGCAAGCCTGGGAGC
CGGCGGGAGGTCTGCCAGGCTGTCCCGTGCCTGCTCGGTGGCAGTACAAGCTGGCGGCCTGCAGCGTGA
GCTGTGGGAGAGGGTGTGCGGAGGATCTGTATTGTGCCCGGGCCATGGGGAGGACGATGGTGGAGGA
GATCCTGTTGGACACCCAGTGCAGGGGCTGCCTGCCCCGGAACCCAGGAGGCTGCAGCCTGGAGCCC
TGCCACCTAGGTGGAAGTCAATGTCCTTGGCCATGTTGCGCCAGCTGTGGCCTTGGCACTGCTAGAC
GCTCGGTGGCCTGTGTGACGCTCGACCAAGGCCAGGACGTGGAGGTGGACGAGGGGCTGTGCGGCGCT
ATGGAGTGTCTGTTTCTGTGGGATGGCATCCAGCGCCGCGTGACACCTGCCTCGGACCCAGGCC
AGGCGCTGTGCCAGCTGATTTCTGCCAGCACTTGCCCAAGCCGGTACTGTGCGTGGCTGCTGGCTGG
GCCCTGTGTGGGACAGGGTGCCTGTGGCAGGCAGCACCTTGAGCCAACAGGAACCATGACATGCGAGGC
CCAGGGCAGGCAGACTGTGCAAGTGGCCATTGGCGGCCCTCGGGGAGGTGGTACCCTCCGCTCCTTG
AGAGTTCTCTCAACTGCAGTGGGGGACATGTTGCTGCTTTGGGGCCGGCTCACCTGGAGGAAGATGTG
CAGGAAGCTGTTGGACATGACTTTCAGTCCAAGACCAACACGCTGGTGGTGGGAGCAGCCTGCGGGCGG
CCAGGAGGTGGGTGCTGCTGCGGTATGGGAGCCAGCTTGCTCCTGAAACCTTCTACAGAGAATGTGACA
TGCAGCTCTTGGCCCTGGGGTAAATCGTGAGCCCTCGCTGAGTCCAGCCACGAGTAATGCAGGGGG
CTGCCGGCTCTTAAATGTGGCTCCGCACGCACGATTGCCATCCATGCCCTGGCCACCAACATGGGC
GCTGGGACCGAGGGAGCCAATGCCAGCTACATCTTGATCCGGGACACCCACAGCTTGAGGACCACAGCGT
TCCATGGGAGCAGGTGCTCTACTGGGAGTGCAGAGCAGCCAGGCTGAGATGGAGTTACAGCAGGGGCTT
CCTGAAGGCTCAGGCCAGCCTGCGGGGCCAGTACTGGACCCTCCAATCATGGGTACCGGAGATGCAGGAC
CCTCAGTCTGGAAGGGAAAGGAAGGAACC

ACGCGTACGCGGGCGCTCGAGCAGAACTCATCTCAGAAGAGGATCTGGCAGCAATGATATCCTGGATT
ACAAGGATGACGACGATAAGGTTTAA

Protein Sequence: >RC222049 representing NM_139026
 Red=Cloning site Green=Tags(s)

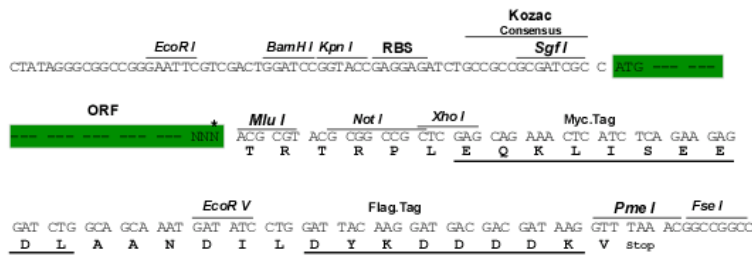
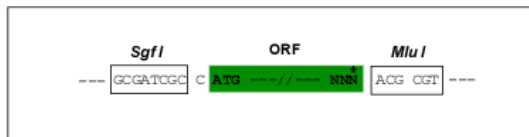
MHQRHPRARCPLCVAGILACGFLLGCWGPSHFQQSCLQALEPQAVSSYLSPGAPLKGRPPSPGFQRQRQ
 RQRRRAAGGILHLELLVAVGPDVFQAHQEDTERYVLTNLNIGAELLRDP SLGAQFRVHLVKMVILTEPEGA
 PNITANLTSLLSVCGWSQTINPEDDTPGHADLVLYITRFDLELPDGNRQVRGVTLQGGACSPW SCLI
 TEDTGFDLGVTTIAHEIGHSFGL EHDGAPGSGCGPSGHVMASDGAAPRAGLAWSPCSRRQLLSLLSANEQC
 RVAFGPKAVACTFAREHLDMCQAL SCHTDPLDQSSCSRLLVPLLDGTECGVEKWKSGRCRSLVELTPIA
 AVHGRWSSWGPRSPCSRSCGGVVTRRRQCNNPRPAFGGRACV GADLQAEMCNTQACEKTQLEFMSQQCA
 RTDQQLRSSPGGASFYHWGAAVPHSQGDALCRHMCRAIGESFIMKRGDSFLDGT RCMPSGPPREDGTL SL
 CVSGSCRTFGCDGRMDSQQVWDR CQVCGDNSTCSPRKGSFTAGRAREYVTF LTVTPNLTSVYIANHRPL
 FTHLAVRIGGRYVAVGKMSISPNTTYP SLLLEDGRVEYRVALTEDRLPRLEEIRIWGLQEDADIQVYRRY
 GEEYGNLTRPDI TFTYFQPKPRQAWVA AVRGPCSVSCGAGLRWVNYSCLDQARKELVETVQCQGSQPP
 AWPEACVLEPCPPYWAVGDFGPCSASCGGGLRERPVRCVEAQGSLLKTLPPARCRAGAQQPAVALET CNP
 QPCPARWEVSEPSCTSAGGAGLAL ENETCVPGADGLEAPVTEGPGSVDEKLPAPEPCVMSCPPGWGHL
 DATSAGEKAPSPWGSIR TGAQA AHVWTPAAGSCSVSCGRGLMELRFLCMD SALRPVQEEELCGLASKPGS
 RREVCQAVPCPARWQYKLAACSVSCGRGVRRILYCARAHGEDD GEEILLDTQCQGLPRPEPQEAC SLEP
 CPPRWKVM SLGPCSASCLGTARRSVACVQLDQGQDVEVDEAACAALVRPEASVPCLIADCTYRWHVGTW
 MECSVSCGDGIQRRRDTCLGPQAQAPVPADFCQHLPKPVTVRGCWAGPCVQGACGRQHLEPTGTIDMRG
 PGQADCAVAIGRPLGEVVT LRVLESSLNCSAGDMLLLWGRLTWRKMCRKLLDMTFSSKNTNLVVRQRCGR
 PGGVLLRYGSQLAPETFYRECDMQLFGPWGEIVSPSLSPATSNAGGCRLFINVAPHARIAIHALATNMG
 AGTEGANASYILIRDTHSLRTTAFHGQQVLYWESESSQAEMEFSEGF LKAQASLRGQYWTLQSWVPEMQD
 PQSWKKGKEGT

TRTRPLEQKLISEEDLAANDILDYKDDDDKV

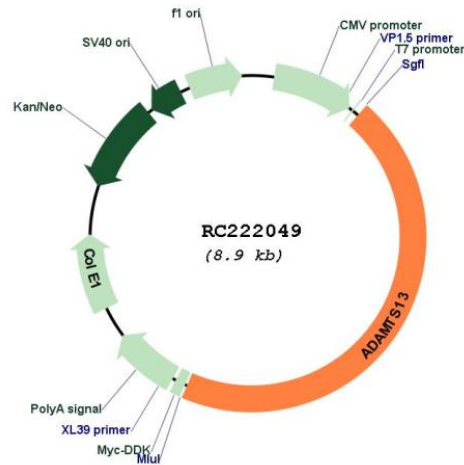
Restriction Sites:
Cloning Scheme:

Sgfl-MluI

Cloning sites used for ORF Shuttling:



* The last codon before the Stop codon of the ORF

Plasmid Map:


ACCN: NM_139026

ORF Size: 4020 bp

OTI Disclaimer: The molecular sequence of this clone aligns with the gene accession number as a point of reference only. However, individual transcript sequences of the same gene can differ through naturally occurring variations (e.g. polymorphisms), each with its own valid existence. This clone is substantially in agreement with the reference, but a complete review of all prevailing variants is recommended prior to use. [More info](#)

OTI Annotation: This clone was engineered to express the complete ORF with an expression tag. Expression varies depending on the nature of the gene.

Components: The ORF clone is ion-exchange column purified and shipped in a 2D barcoded Matrix tube containing 10ug of transfection-ready, dried plasmid DNA (reconstitute with 100 ul of water).

Reconstitution Method:

1. Centrifuge at 5,000xg for 5min.
2. Carefully open the tube and add 100ul of sterile water to dissolve the DNA.
3. Close the tube and incubate for 10 minutes at room temperature.
4. Briefly vortex the tube and then do a quick spin (less than 5000xg) to concentrate the liquid at the bottom.
5. Store the suspended plasmid at -20°C. The DNA is stable for at least one year from date of shipping when stored at -20°C.

RefSeq: [NM_139026.3](#), [NP_620595.1](#)

RefSeq Size: 4680 bp

RefSeq ORF: 4023 bp

Locus ID: 11093

UniProt ID: [Q76LX8](#)

Cytogenetics: 9q34.2

Protein Families: Secreted Protein, Transmembrane

MW: 144.5 kDa

Gene Summary: This gene encodes a member of a family of proteins containing several distinct regions, including a metalloproteinase domain, a disintegrin-like domain, and a thrombospondin type 1 (TS) motif. The enzyme encoded by this gene specifically cleaves von Willebrand Factor (vWF). Defects in this gene are associated with thrombotic thrombocytopenic purpura. Alternative splicing results in multiple transcript variants. [provided by RefSeq, Jul 2013]