

## Product datasheet for RC222046

### BHLHB5 (BHLHE22) (NM\_152414) Human Tagged ORF Clone

#### Product data:

Product Type:	Expression Plasmids
Product Name:	BHLHB5 (BHLHE22) (NM_152414) Human Tagged ORF Clone
Tag:	Myc-DDK
Symbol:	BHLHB5
Synonyms:	Beta3; Beta3a; BHLHB5; CAGL85; TNRC20
Mammalian Cell Selection:	Neomycin
Vector:	pCMV6-Entry (PS100001)
E. coli Selection:	Kanamycin (25 ug/mL)
ORF Nucleotide Sequence:	>RC222046 representing NM_152414 Red=Cloning site Blue=ORF Green=Tags(s)

TTTTGTAATACGACTCACTATAGGGCGGCCGGAATTCGTCGACTGGATCCGGTACCGAGGAGATCTGCC  
GCC**CGATCGCC**

ATGGAGCGCGGGATGCACCTCGGTGCAGCGGCCCGCGGAGGACGACCTCTTCTGCACAAGAGCCTGA  
GCGCCTCCACCTCAAGCGCTTGAAGCGGCTTCCGCTCCACGCCCCCGGGCATGGACCTGTCCCTGGC  
GCCCGCCTCGGAACGCCCGGCTCCTCCTCGTCGCCCTGGGCTGCTTCGAGCCGGCTGACCCC  
GAGGGGGCAGGGCTGCTGTTGCCCGCCTGGAGGAGCGCGCGGCAGCGCGGAAGTGGCGCGCGG  
GCGCGCGGGGTGGGTGTCCCGGGCTGCTAGTAGGTTACGCCGCGCTGGGGGCGACCCTAGCCTAAG  
CAGCCTGCCGGCCGGGGCCGCCCTTTGCCCAAGTACGGCGAAAGCGCGAGCCGGGGCTCGGTGGCCGAG  
AGCAGCGCGCGGAGCAGAGCCCGACGACGACGCGACGGTTCGCTGCGAGCTCGTGTGCGGGCCGGAG  
TAGCCGACCCGCGGGCTCCCGGGAGCGGGAGGTGGTGGCGGAAGGCAGCCGAGGGCTGCTCCAATGC  
CCACCTCCACGGCGGCGCCAGCGTCCCGCGGGGGCCTGGGCGGCGCGCGCGGGGGTAGCAGCAGC  
GGTAGCAGTGGCGCGGTGGCGGTAGCGGTAGCGGCAGCGCGGCGCAGCAGCAGCAGCAGCAGCAGCA  
GCAAGAAATCAAAGAGCAAAGCGCTGCGGCTAACATCAATGCCGAGAGCGCCGGCGGATGCACGA  
CCTGAACGACGCGCTGGACGAGCTGCGCGCGGTGATCCCTACGCGCACAGCCCCCTGGTGCGAAAGCTC  
TCCAAGATCGCCACGCTGCTGCTCGCAAGAATACTCCTCATGCAGGCGCAGGCCCTGGAGGAGATGC  
GGCGCCTAGTCGCTACCTCAACCAGGGCCAGGCCATCTCGGCTGCCTCCCTGCCAGCTCGGCGGCTGC  
AGCGGCAGCAGCTGCTGCCCTGCACCCGCGCTCGGCGCTACGAGCAGGCGAGCCGGCTACCCGTTGAGC  
GCCGACTGCCCGGCTGCCTCCTGCCCGGAGAAGTGGCCCTGTTAACAGCGTCTCCTCCAGCCTCT  
GCAAACAGTGACGGAGAAGCCT

**ACGGT**ACGCGGCCGCTCGAGCAGAACTCATCTCAGAAGAGGATCTGGCAGCAAATGATATCCTGGATT  
ACAAGGATGACGACGATAAGGTTTAA



[View online >](#)



**Reconstitution Method:**

1. Centrifuge at 5,000xg for 5min.
2. Carefully open the tube and add 100ul of sterile water to dissolve the DNA.
3. Close the tube and incubate for 10 minutes at room temperature.
4. Briefly vortex the tube and then do a quick spin (less than 5000xg) to concentrate the liquid at the bottom.
5. Store the suspended plasmid at -20°C. The DNA is stable for at least one year from date of shipping when stored at -20°C.

**RefSeq:** [NM\\_152414.5](#)

**RefSeq Size:** 3388 bp

**RefSeq ORF:** 1146 bp

**Locus ID:** 27319

**UniProt ID:** [Q8NFJ8](#)

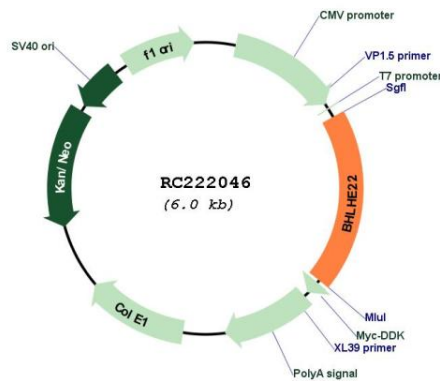
**Cytogenetics:** 8q12.3

**Protein Families:** Druggable Genome

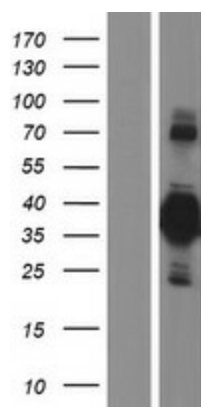
**MW:** 36.8 kDa

**Gene Summary:** This gene encodes a protein that belongs to the basic helix-loop-helix (bHLH) family of transcription factors that regulate cell fate determination, proliferation, and differentiation. A similar protein in mouse is required for the development of the dorsal cochlear nuclei, and is thought to play a role in in the differentiation of neurons involved in sensory input. The mouse protein also functions in retinogenesis. [provided by RefSeq, Oct 2016]

### Product images:



Circular map for RC222046



Western blot validation of overexpression lysate (Cat# [LY407582]) using anti-DDK antibody (Cat# [TA50011-100]). Left: Cell lysates from untransfected HEK293T cells; Right: Cell lysates from HEK293T cells transfected with RC222046 using transfection reagent MegaTran 2.0 (Cat# [TT210002]).